

DEPARTMENT OF MANAGEMENT & BUDGET
PURCHASING DIVISION
MARGARET E. MCEVILLY
PHONE: 815/724-3925
FAX: 815/724-3929
mmcevilly@jolietcity.org



CITY OF JOLIET
ADDENDUM NO. 1

**N3 - EX SUBCONTRACT FOR EXCAVATION FOR THE NEW
CONSTRUCTION OF A SINGLE-FAMILY RESIDENCE AT 1414
WOODRUFF AVENUE, 1317 DEMMOND STREET, & 1102 ANTRAM
STREET**

THE ATTENTION TO ALL PROSPECTIVE BIDDERS ON THE ABOVE REFERENCED PROJECT IS CALLED TO THE FOLLOWING

This Addendum forms a part of the Contract Documents and modifies the Bidding Documents, with amendments and additions noted below.

This Addendum consists of the following:

Clarifications and Contract changes regarding **N3 - EX SUBCONTRACT FOR EXCAVATION FOR THE NEW CONSTRUCTION OF A SINGLE-FAMILY RESIDENCE AT 1414 WOODRUFF AVENUE, 1317 DEMMOND STREET, & 1102 ANTRAM STREET.**

1. The projects will most likely be built in succession; moving from one to the next as the individual subcontractors have completed their particular work at each location.
2. I don't believe there has been any previous construction on these three lots.
3. We don't have exact elevations; finished grade to be minimum of 5%. Attached are the rough elevations.

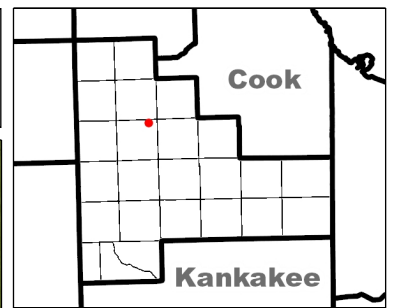
Acknowledge receipt of this Addendum in the space provided in the Bid Form and exterior of bid submission envelope. Failure to do so may disqualify the Bidder.

Any questions regarding the above should be directed to **Jeff Sterr, Property Maintenance Coordinator, at (815) 724-4096.**

PROSPECTIVE BIDDERS SHALL ACKNOWLEDGE RECEIPT OF THE APPROPRIATE ADDENDUM NUMBER BY STATING THIS ON THE OUTSIDE OF THE SEALED ENVELOPE CONTAINING THE BID PROPOSAL FOR THE ABOVE MENTIONED CONTRACT. FURTHER, BID PROPOSALS MAY NOT BE OPENED WITHOUT ACKNOWLEDGEMENT OF RECEIPT OF ALL ADDENDUMS FOR THE GIVEN CONTRACT.



1414 woodruff

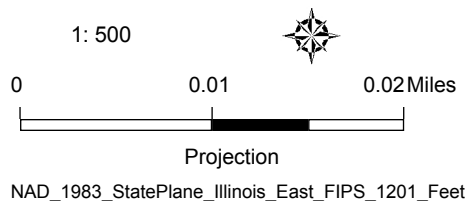


Legend

- Address Points
- Parcels
 - Local
 - Federal
 - State
 - County
 - Local and Private
- 2014 - 2 Ft. Contour Lines
- Surrounding Counties
- Townships

Notes

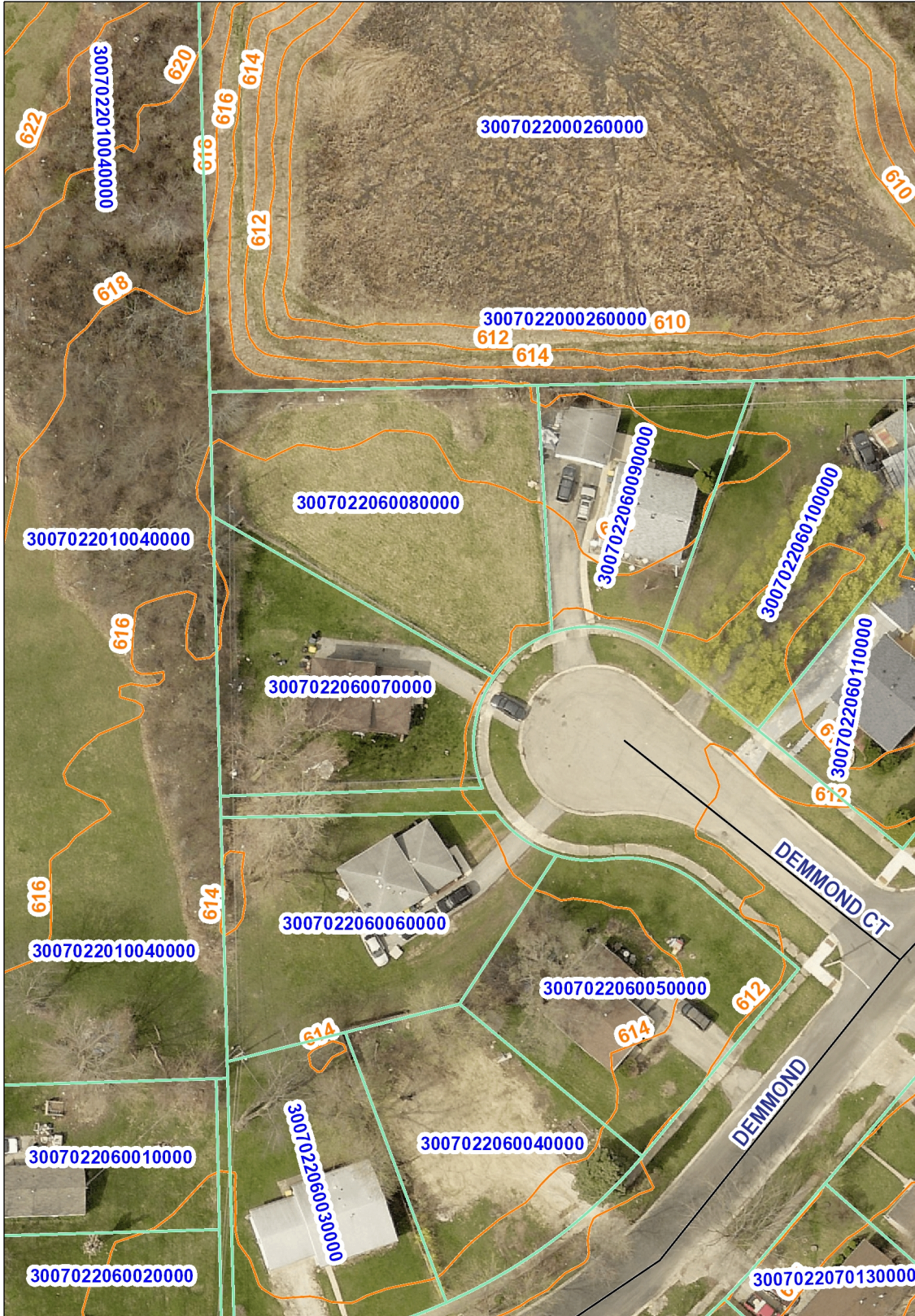
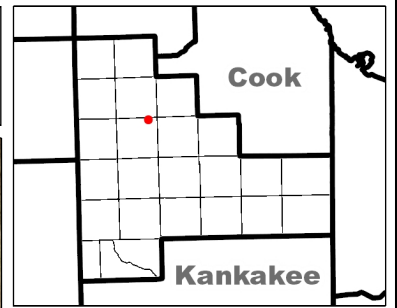
Date: 4/5/2016



Disclaimer of Warranties and Accuracy of Data: Although the data developed by Will County for its maps, websites, and Geographic Information System has been produced and processed from sources believed to be reliable, no warranty, expressed or implied, is made regarding accuracy, adequacy, completeness, legality, reliability or usefulness of any information. This disclaimer applies to both isolated and aggregate uses of the information. The County and elected officials provide this information on an "as is" basis. All warranties of any kind, express or implied, including but not limited to the implied warranties of merchantability, fitness for a particular purpose, freedom from contamination by computer viruses or hackers and non-infringement of proprietary rights are disclaimed. Changes may be periodically made to the information herein; these changes may or may not be incorporated in any new version of the publication. If you have obtained information from any of the County web pages from a source other than the County pages, be aware that electronic data can be altered subsequent to original distribution. Data can also quickly become out of date. It is recommended that careful attention be paid to the contents of any data, and that the originator of the data or information be contacted with any questions regarding appropriate use. Please direct any questions or issues via email to gis@willcountyillinois.com.



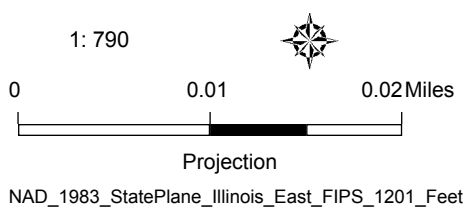
1317 Demmond



- Legend**
- Address Points
 - Parcels
 - Local
 - Federal
 - State
 - County
 - Local and Private
 - 2014 - 2 Ft. Contour Lines
 - ▭ Surrounding Counties
 - ▭ Townships

Notes

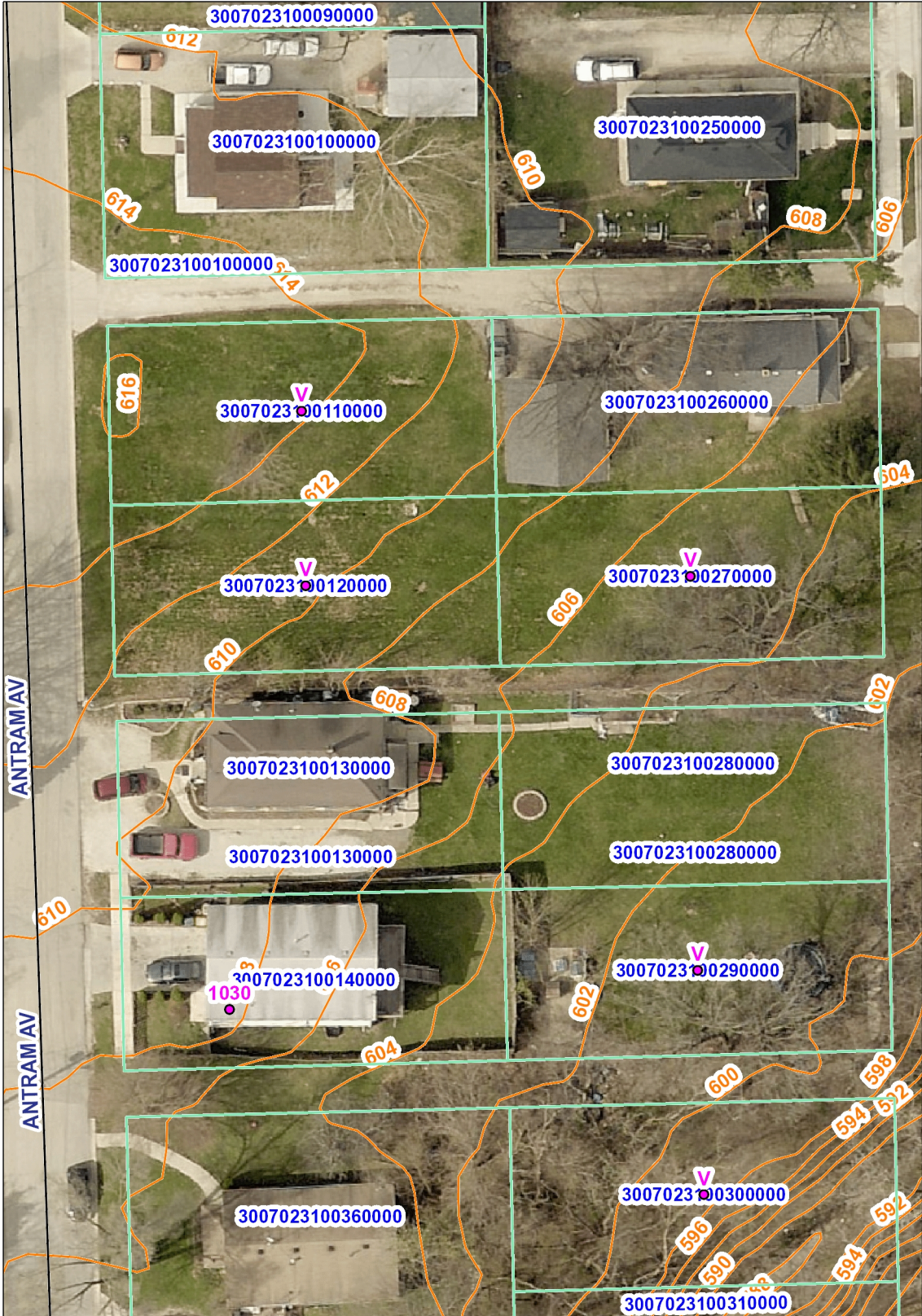
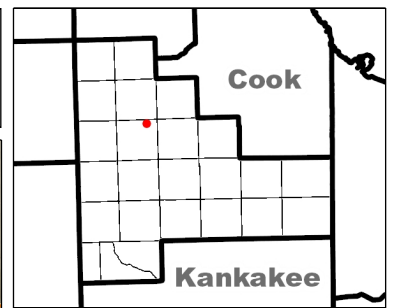
Date: 4/5/2016



Disclaimer of Warranties and Accuracy of Data: Although the data developed by Will County for its maps, websites, and Geographic Information System has been produced and processed from sources believed to be reliable, no warranty, expressed or implied, is made regarding accuracy, adequacy, completeness, legality, reliability or usefulness of any information. This disclaimer applies to both isolated and aggregate uses of the information. The County and elected officials provide this information on an "as is" basis. All warranties of any kind, express or implied, including but not limited to the implied warranties of merchantability, fitness for a particular purpose, freedom from contamination by computer viruses or hackers and non-infringement of proprietary rights are disclaimed. Changes may be periodically made to the information herein; these changes may or may not be incorporated in any new version of the publication. If you have obtained information from any of the County web pages from a source other than the County pages, be aware that electronic data can be altered subsequent to original distribution. Data can also quickly become out of date. It is recommended that careful attention be paid to the contents of any data, and that the originator of the data or information be contacted with any questions regarding appropriate use. Please direct any questions or issues via email to gis@willcountyillinois.com.



1102 Antram

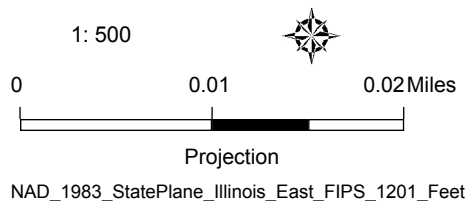


Legend

- Address Points
- Parcels
- Local
 - Federal
 - State
 - County
 - Local and Private
- 2014 - 2 Ft. Contour Lines
- Surrounding Counties
- Townships

Notes

Date: 4/5/2016



Disclaimer of Warranties and Accuracy of Data: Although the data developed by Will County for its maps, websites, and Geographic Information System has been produced and processed from sources believed to be reliable, no warranty, expressed or implied, is made regarding accuracy, adequacy, completeness, legality, reliability or usefulness of any information. This disclaimer applies to both isolated and aggregate uses of the information. The County and elected officials provide this information on an "as is" basis. All warranties of any kind, express or implied, including but not limited to the implied warranties of merchantability, fitness for a particular purpose, freedom from contamination by computer viruses or hackers and non-infringement of proprietary rights are disclaimed. Changes may be periodically made to the information herein; these changes may or may not be incorporated in any new version of the publication. If you have obtained information from any of the County web pages from a source other than the County pages, be aware that electronic data can be altered subsequent to original distribution. Data can also quickly become out of date. It is recommended that careful attention be paid to the contents of any data, and that the originator of the data or information be contacted with any questions regarding appropriate use. Please direct any questions or issues via email to gis@willcountyillinois.com.