

00 91 13

ADDENDUM NO. 1

DATE: November 7, 2024

FROM: Baxter & Woodman, Inc., Consulting Engineers

TO: Planholders of record for the Work titled:

City of Joliet, Illinois
Upper Bluff Water Main Improvements
City of Joliet Contract No. 2852-0125

The Bidding Documents are amended as follows:

1. DRAWINGS

- A. Delete Sheet G003 in its entirety, and insert Sheet G003, revision dated November 7, 2024, in lieu thereof.
- B. Delete Sheet C001 in its entirety, and insert Sheet C001, revision dated November 7, 2024, in lieu thereof.
- C. Delete Sheet C006 in its entirety, and insert Sheet C006, revision dated November 7, 2024, in lieu thereof.
- D. Delete Sheet C012 in its entirety, and insert Sheet C012, revision dated November 7, 2024, in lieu thereof.
- E. Delete Sheet C014 in its entirety, and insert Sheet C014, revision dated November 7, 2024, in lieu thereof.
- F. Delete Sheet C020 in its entirety, and insert Sheet C020, revision dated November 7, 2024, in lieu thereof.
- G. Delete Sheet C021 in its entirety, and insert Sheet C021, revision dated November 7, 2024, in lieu thereof.
- H. Delete Sheet C022 in its entirety, and insert Sheet C022, revision dated November 7, 2024, in lieu thereof.
- I. Delete Sheet C026 in its entirety, and insert Sheet C026, revision dated November 7, 2024, in lieu thereof.
- J. Delete Sheet C030 in its entirety, and insert Sheet C030, revision dated November 7, 2024, in lieu thereof.

2. SPECIFICATIONS

- A. Section 00 01 10 TABLE OF CONTENTS
Add "APPENDIX D – LPC 663" to the end of the table.

B. Section 00 41 00.41, BID FORM:

Delete Section 00 41 00.41, BID FORM in its entirety and insert the attached BID FORM, revision dated November 7, 2024, in lieu thereof.

C. Section 00 43 93.41, BID SUBMITTAL CHECKLIST:

Delete Section 00 43 93.41, BID SUBMITTAL CHECKLIST in its entirety and insert the attached BID SUBMITTAL CHECKLIST, revision dated November 7, 2024, in lieu thereof in order to insert paragraph c "City of Joliet affidavits".

D. Section 00 73 00.41, SUPPLEMENTARY CONDITIONS

Page 00 73 00.41-6, delete paragraph 5.08 and replace with the following:

"5.08 Additional Insureds:

Additional insureds referenced in paragraphs 5.04 and 5.07 shall be as follows:

Owner:	City of Joliet, Illinois
Address:	150 West Jefferson Street, Joliet, Illinois 60432
Engineer:	Baxter & Woodman, Inc.
Address:	8678 Ridgefield Road, Crystal Lake, Illinois 60012
Other:	University of St Francis
Address:	500 Wilcox St, Joliet, IL 60435
Other:	Illinois Department of Transportation
Address:	201 West Center Court, Schaumburg, IL 60196
Other:	Burns & McDonnell
Address:	200 West Adams Street; Suite 2700, Chicago, IL 60606"

Page 00 73 00.41-14, delete paragraph 12.06 and replace and insert the following:

"12.06 Liquidated Damages

Contractor understands that time is of the essence and that Owner will suffer financial loss if the Work is not completed within the times or by the dates specified in the Bid Form, plus any extensions thereof allowed in accordance with Article 12 of the General Conditions. Contractor also recognizes the delays, expense, and difficulties involved in proving in a legal or arbitration proceeding the actual loss suffered by Owner if the Work is not completed on time. Accordingly, instead of requiring any such proof, Contractor shall pay Owner as liquidated damages for delay (but not as a penalty) \$1,200 for each day that expires after the time or date specified in the Bid Form for Substantial Completion until the Work is substantially complete. After Substantial Completion, if Contractor shall neglect, refuse or fail to complete the remaining Work within the Contract Time or any proper extension thereof granted by Owner, Contractor shall pay Owner \$600 for each day that expires after the time or date specified in the Bid Form for completion and readiness for final payment. Liquidated damages accrued after the Substantial Completion date will be withheld from the project retention until the work is substantially completed. Liquidated damages accrued after the final completion date will also be withheld from the project retention until final completion is

achieved. If the amount of project retention is not sufficient enough to cover the amount of accrued liquidated damages for substantial and final completion, further payments to the Contractor will be withheld until to the project is substantially and final completed. The Contractor agrees the Work shall be completed based on the interim milestones specified in Section 01 31 13.16.

12.07 Engineering Costs after Date for Substantial Completion

Contractor understands the Owner will have part-time Resident Project Representative labor costs and expenses after the date established for Substantial Completion. The Contractor understands and agrees to pay the difference between part-time and full-time Resident Project Representative labor costs, expenses, and overtime engineering costs, if any, required after the date established for Substantial Completion.

Owner will pay the cost for such engineering services, overtime engineering services, and out-of-pocket and mileage expenses; and shall deduct such cost from payments due Contractor. Overtime engineering services shall be charged at Engineer's standard hourly rates applied on a time and one-half basis for all time over eight hours on any single working day and for all hours on Saturday, and on a double time basis for all Sunday and Legal Holiday hours.

If the amount due Contractor is not sufficient to cover the cost of overtime engineering services, Contractor shall reimburse Owner in the amount necessary to cover such costs.

12.08 Engineering Costs after Date for Final Completion

Contractor understands the Owner will be required to pay for additional engineering time and expenses if the Work is not complete on or before the date established for Final Completion. The Contractor understands and agrees to pay for all engineering costs, including labor and expenses for full-time Resident Project Representative, including overtime engineering costs, required after the date established for Final Completion.

Owner will pay the cost for such engineering services, overtime engineering services, and out-of-pocket and mileage expenses; and shall deduct such cost from payments due Contractor. Overtime engineering services shall be charged at Engineer's standard hourly rates applied on a time and one-half basis for all time over eight hours on any single working day and for all hours on Saturday, and on a double time basis for all Sunday and Legal Holiday hours. If the amount due Contractor is not sufficient to cover the cost of overtime engineering services, Contractor shall reimburse Owner in the amount necessary to cover such costs."

E. Section 00 73 00.42, PREVAILING WAGES:

Delete Section 00 73 00.42, PREVAILING WAGES in its entirety and insert the attached Section 00 73 00.42, PREVAILING WAGES, revision dated November 7, 2024, in lieu thereof.

F. Section 01 22 29, MEASUREMENT AND PAYMENT:

Page 01 22 29-33, add the following after paragraph 1.61 and re-number following paragraphs:

“1.62 MAINTENANCE OF EXISTING TRAFFIC SIGNAL INSTALLATION

- A. Description:
 - 1. This work shall consist of maintaining existing traffic signal installation that has been designated to remain in operation during construction. This work shall be in accordance with Section 850 of the “Standard Specifications for Road and Bridge Construction” adopted January 1, 2023.
- B. Measurement:
 - 1. This work will be measured for payment as each intersection.
- C. Basis of Payment:
 - 1. This work will be paid for at the Contract Unit Price per each for MAINTENANCE OF EXISTING TRAFFIC SIGNAL INSTALLATION.”

G. Section 01 31 13.16, PROJECT COORDINATION AND CONSTRUCTION PHASING:

Page 01 31 13.16-2, add the following after paragraph 1.7.A.2:

- “3. Woodworth-Nicholson Alley Water Main (Work Area B)
- a. Install new water main on Woodworth Avenue and Nicholson Street. Install tees and valves at either end of alley and cap the stubs.
 - b. Flush, test, and chlorinate water mains on Woodworth and Nicholson.
 - c. Transfer water services on Woodworth and Nicholson (including 510 Buell). Coordinate with City for temporary water services (506 Buell and 502 Buell).
 - d. Abandon existing water mains on Woodworth, Nicholson, and the alley.
 - e. Install new water main in the existing trench in the alley. Connect to water main stubs at both valves and install a whip for flushing.
 - f. Flush, test, and chlorinate water main in the alley.
 - g. Transfer water services for 506 Buell and 502 Buell to new alleyway main.”

H. Section 01 41 26, PERMITS:

Page 01 41 26-2, replace paragraph 1.8.B.1 with the following:

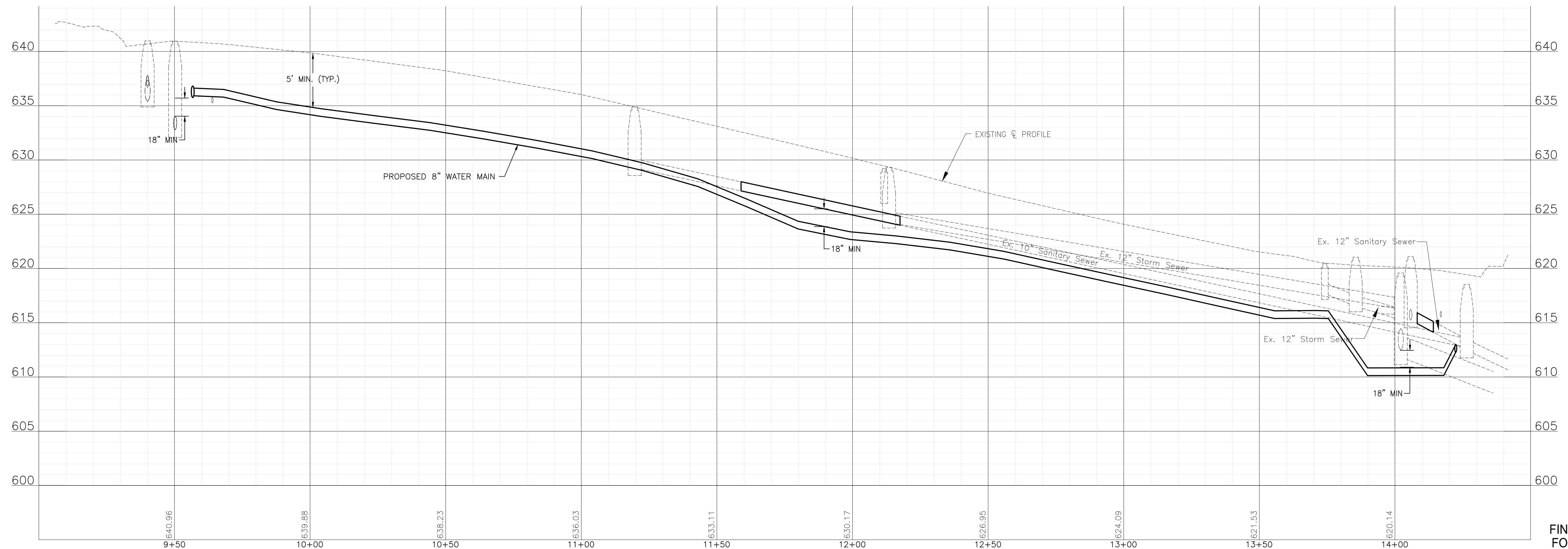
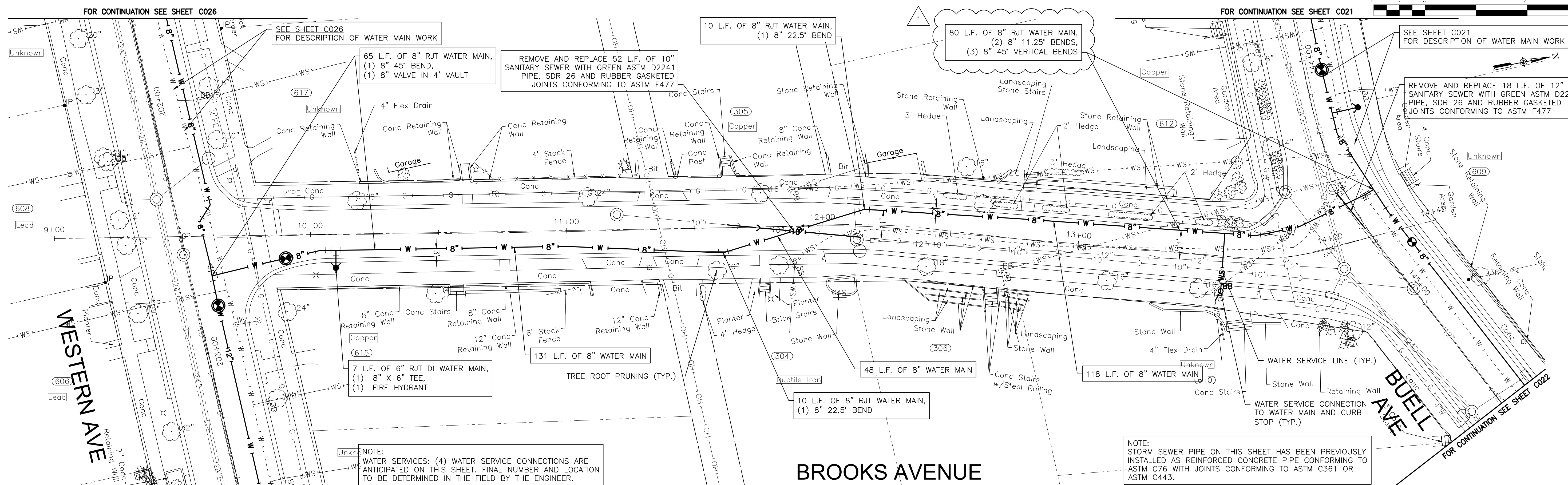
“1. IDOT has determined the value of the bond the contractor must provide is \$30,000.”

I. APPENDIX D – LPC 663:

Insert the attached APPENDIX D – LPC 663, revision dated November 7, 2024.

Nothing in this Addendum shall be construed as changing other requirements of the Bidding Documents. Each Bidder shall acknowledge receipt of this Addendum where indicated in the Bid Form.

END OF ADDENDUM NO. 1



P:\JOLTC\2325880-2025 WATER MAIN\CAD\UPPER BLUFF\01_CIVIL_3D\01_SHTS-PLANS-UPPER_BLUFF-BROOKS.DWG 9-49-59
 Plotted: 11/7/2024 4:47 PM By: ANACINO
 Copyright © 2024, By Baxter & Woodman, Inc.
 State of Illinois - Professional Design Firm
 License No. - 184-001121 - Expires 4-30-25



CONSULTANTS	REVISED - Δ ADDENDUM #1 11/7/24
	REVISED -
	REVISED -
	REVISED -

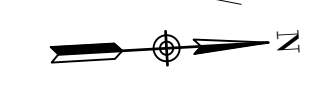
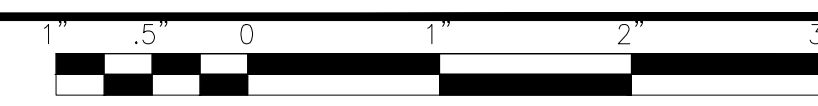
CITY OF JOLIET, ILLINOIS
UPPER BLUFF 2025 WATER MAIN IMPROVEMENTS
WATER MAIN REPLACEMENT IEPA LOAN NO. L17-6076

BROOKS AVENUE STA. 9+00 TO STA. 14+50 PLAN AND PROFILE
 SCALE: HORIZ 1"=20' / VERT 1"=5'
 PROJECT NO: 2325880.00

DESIGNED - RMM	TOTAL SHEETS	SHEET NO.
DRAWN - UKB	39	C001
CHECKED - MJF		
DATE - 11/06/2024		

FINAL DESIGN FOR BIDDING

FOR CONTINUATION SEE SHEET C022

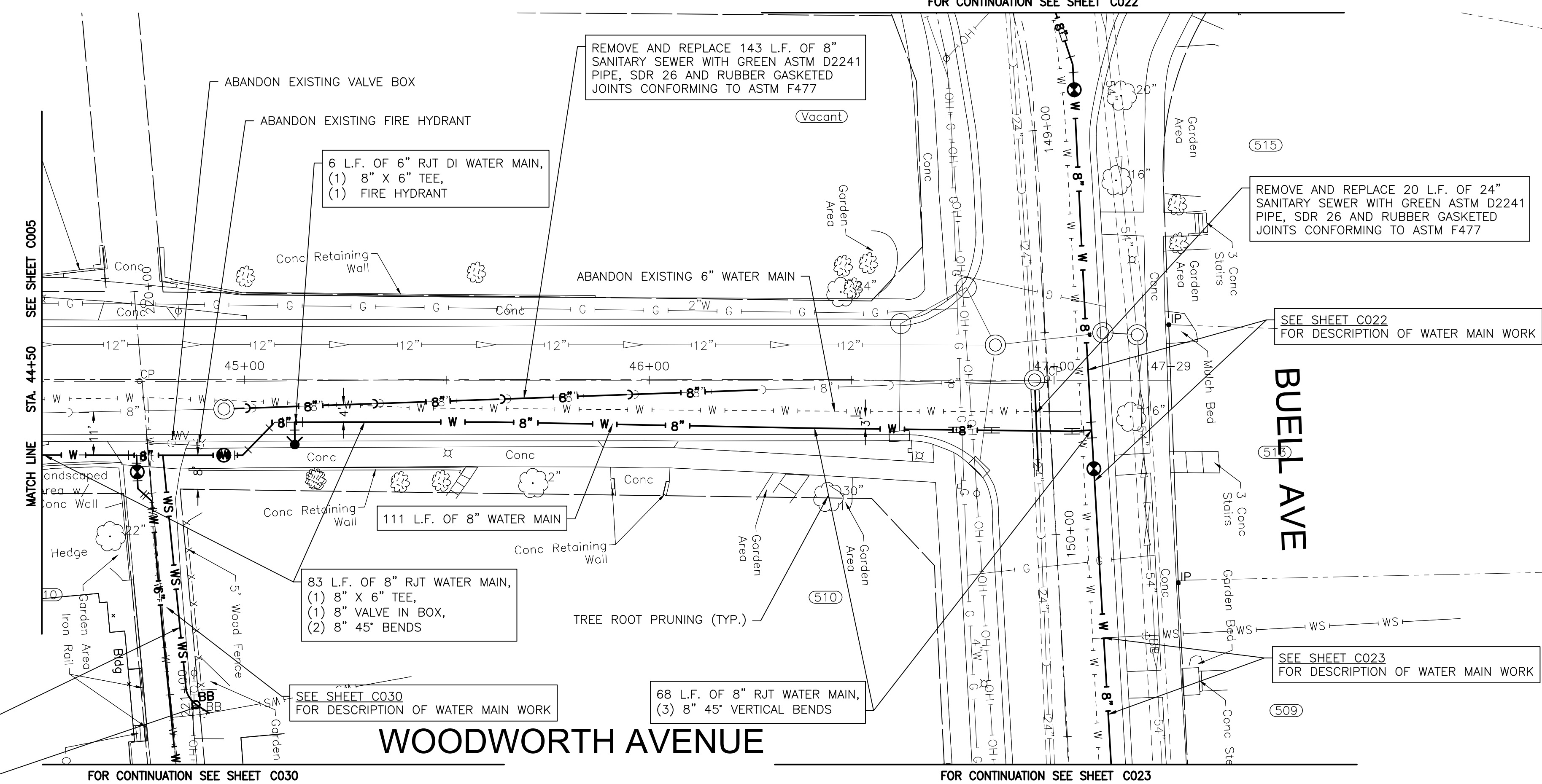


NOTE:
WATER SERVICES: (1) WATER SERVICE CONNECTION IS ANTICIPATED ON THIS SHEET. FINAL NUMBER AND LOCATION TO BE DETERMINED IN THE FIELD BY THE ENGINEER.

NOTE:
STORM SEWER PIPE ON THIS SHEET HAS BEEN PREVIOUSLY INSTALLED AS REINFORCED CONCRETE PIPE CONFORMING TO ASTM C76 WITH JOINTS CONFORMING TO ASTM C361 OR ASTM C443.

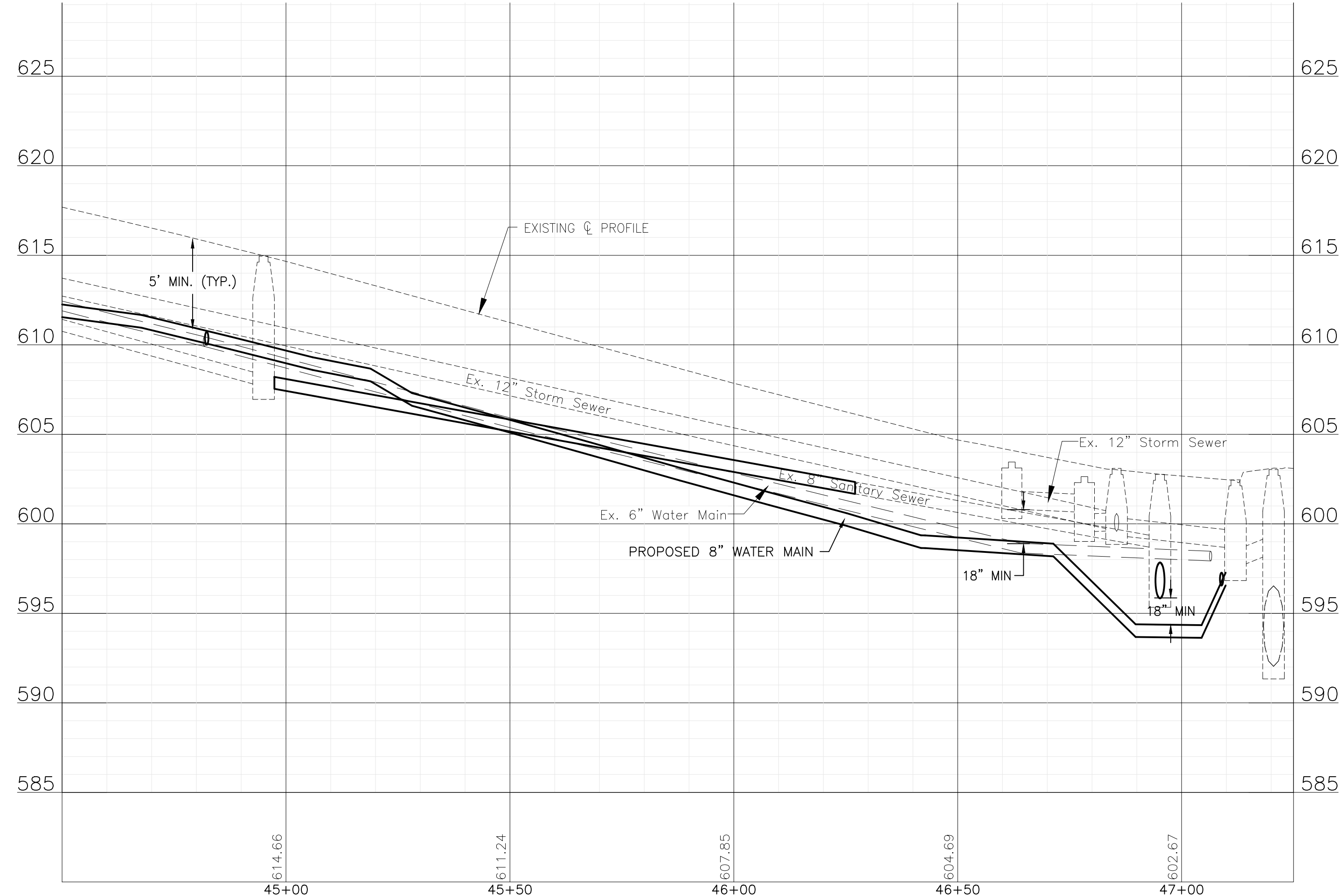
1 WATER SERVICE LINE (TYP.)

1 WATER SERVICE CONNECTION TO WATER MAIN AND CURB STOP (TYP.)



FOR CONTINUATION SEE SHEET C030

FOR CONTINUATION SEE SHEET C023



P:\VOLTC\2325880-2025 WATER MAIN\UPPER BLUFF\01_CIVIL_3D\01_SHTS-PLANS\2325880-UPPER_BLUFF-WOODWORTHAVE.DWG 44+50.00
 Plotted: 11/5/2024 4:49 PM By: ANACINO
 Copyright © 2024, By: Baxter & Woodman, Inc.
 State of Illinois - Professional Design Firm
 License No. - 184-001121 - Expires 4-30-25



CONSULTANTS	REVISED - ADDENDUM #1 11/7/24
	REVISED -
	REVISED -
	REVISED -

CITY OF JOLIET, ILLINOIS
UPPER BLUFF 2025 WATER MAIN IMPROVEMENTS
CITY OF JOLIET CONTRACT NO. 2852-0125

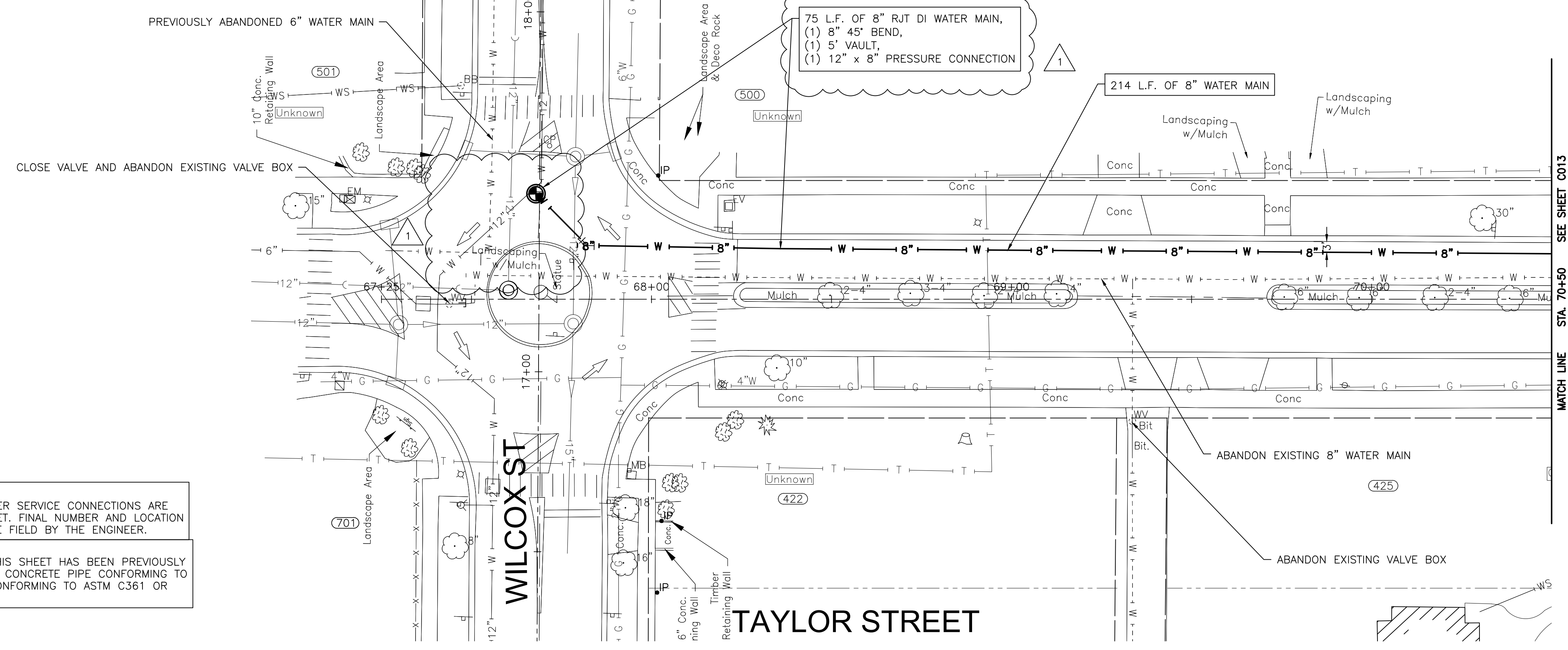
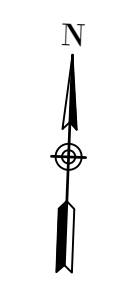
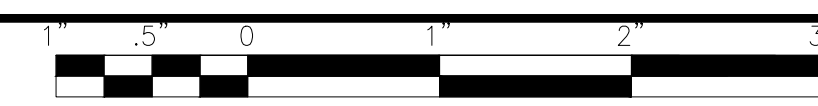
WOODWORTH AVENUE STA. 44+50 TO STA. 47+30 PLAN AND PROFILE

SCALE: HORIZ 1"=20' / VERT 1"=5'

PROJECT NO: 2325880.00

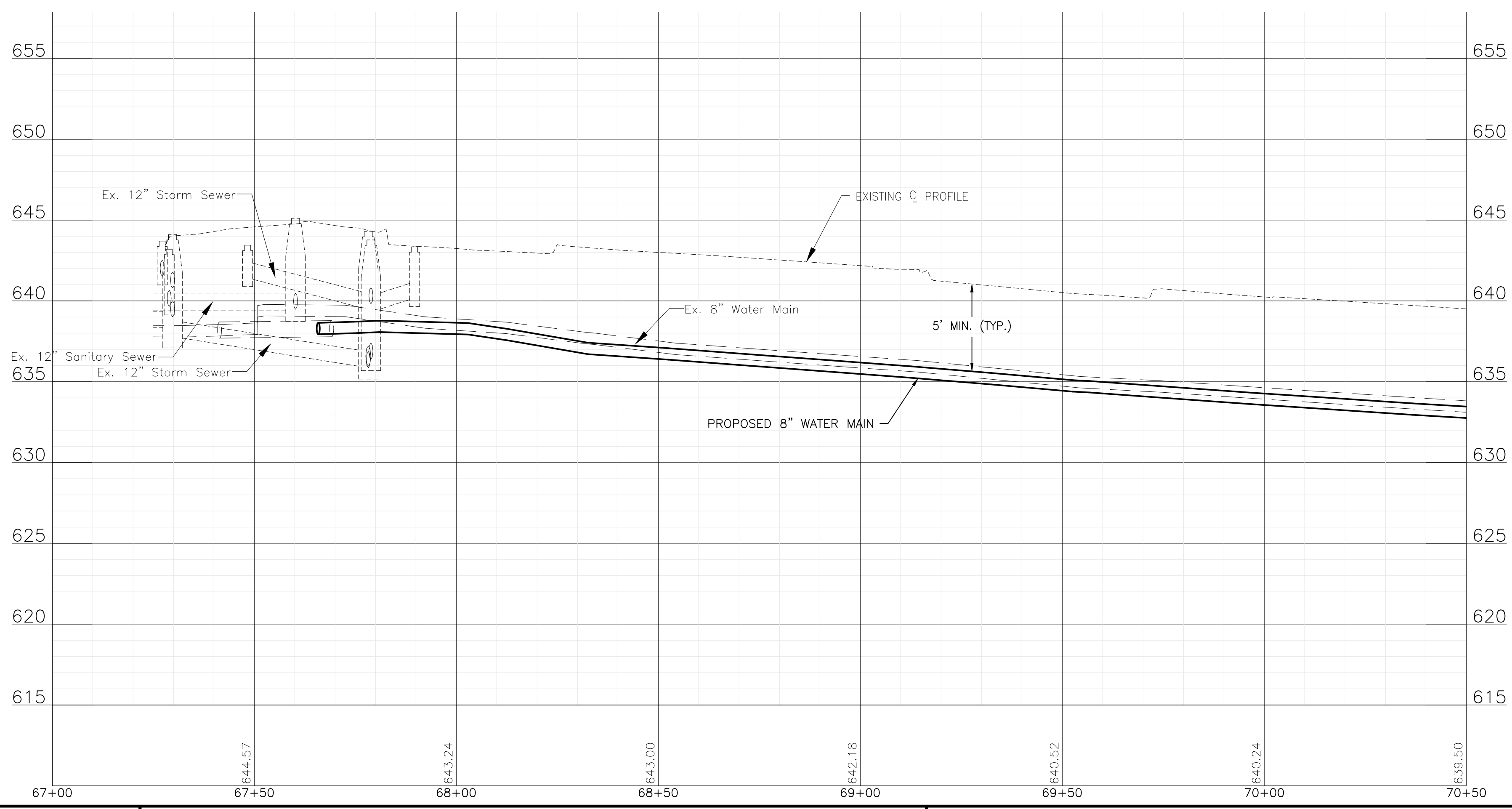
DESIGNED - RMM	TOTAL SHEETS	SHEET NO.
DRAWN - UKB	39	C006
CHECKED - MJF		
DATE - 11/06/2024		

FINAL DESIGN FOR BIDDING



NOTE:
WATER SERVICES: (O) WATER SERVICE CONNECTIONS ARE ANTICIPATED ON THIS SHEET. FINAL NUMBER AND LOCATION TO BE DETERMINED IN THE FIELD BY THE ENGINEER.

NOTE:
STORM SEWER PIPE ON THIS SHEET HAS BEEN PREVIOUSLY INSTALLED AS REINFORCED CONCRETE PIPE CONFORMING TO ASTM C76 WITH JOINTS CONFORMING TO ASTM C361 OR ASTM C443.



P:\JOLTC\2325880-2025 WATER MAIN\UPPER BLUFF\01_CIVIL_3D\01_SHITS-PLANS\2325880-UPPER_BLUFF-TAYLORST.DWG 67+25.00
 Plotted: 11/6/2024 7:45 AM By: RWOELLER
 Copyright © 2024, By Baxter & Woodman, Inc.
 State of Illinois - Professional Design Firm
 License No. - 184-001121 - Expires 4-30-25



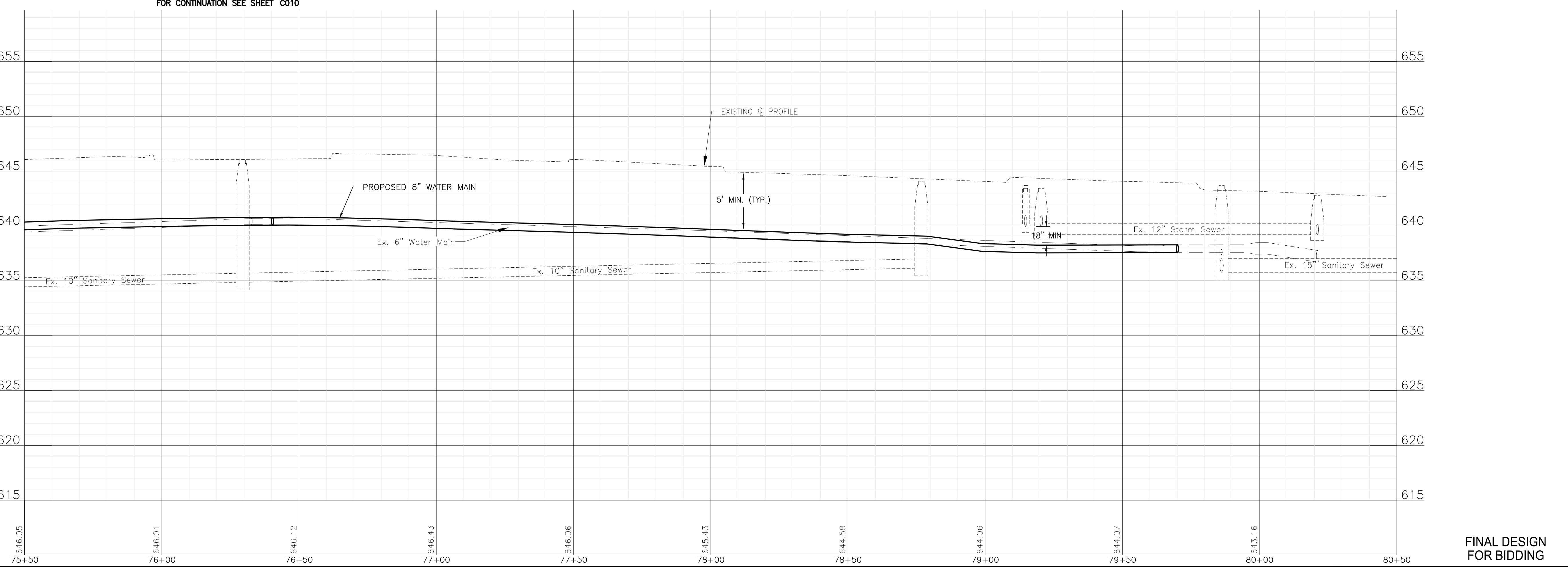
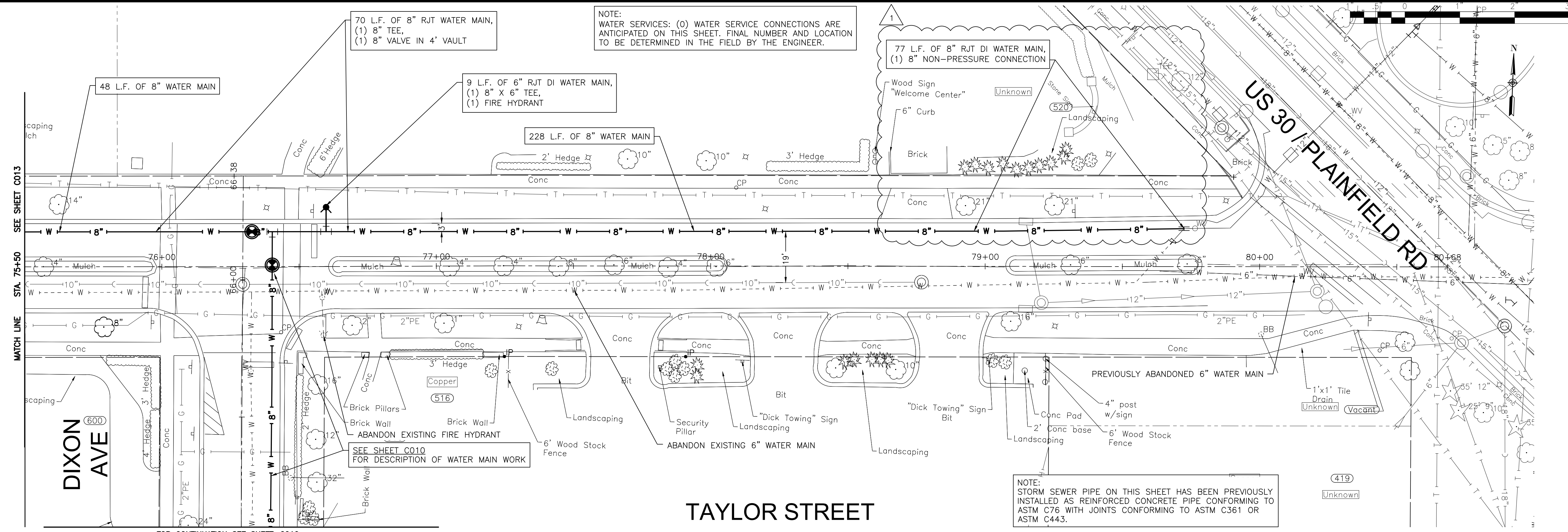
CONSULTANTS	REVISED - Δ ADDENDUM #1 11/7/24
	REVISED -
	REVISED -
	REVISED -

CITY OF JOLIET, ILLINOIS
UPPER BLUFF 2025 WATER MAIN IMPROVEMENTS
CITY OF JOLIET CONTRACT NO. 2852-0125

TAYLOR STREET STA. 67+25 TO STA 70+50 PLAN AND PROFILE
 SCALE: HORIZ 1"=20' / VERT 1"=5'
 PROJECT NO: 2325880.00

DESIGNED - RMM	TOTAL SHEETS	SHEET NO.
DRAWN - ABN/UKB	39	C012
CHECKED - MJF		
DATE - 11/06/2024		

FINAL DESIGN FOR BIDDING



P:\JOLTC\2325880-2025 WATER MAIN\CAD\UPPER BLUFF\01_CIVIL_3D\01_SHTS-PLANS\2325880-UPPER_BLUFF-TAYLORST.DWG 75+50.00
 Plotted: 11/5/2024 4:50 PM By: ANACINO
 Copyright © 2024, By Baxter & Woodman, Inc.
 State of Illinois - Professional Design Firm
 License No. - 184-001121 - Expires 4-30-25



CONSULTANTS	REVISIONS	ADDENDUM #1 11/7/24
	REVISION -	
	REVISION -	
	REVISION -	
	REVISION -	

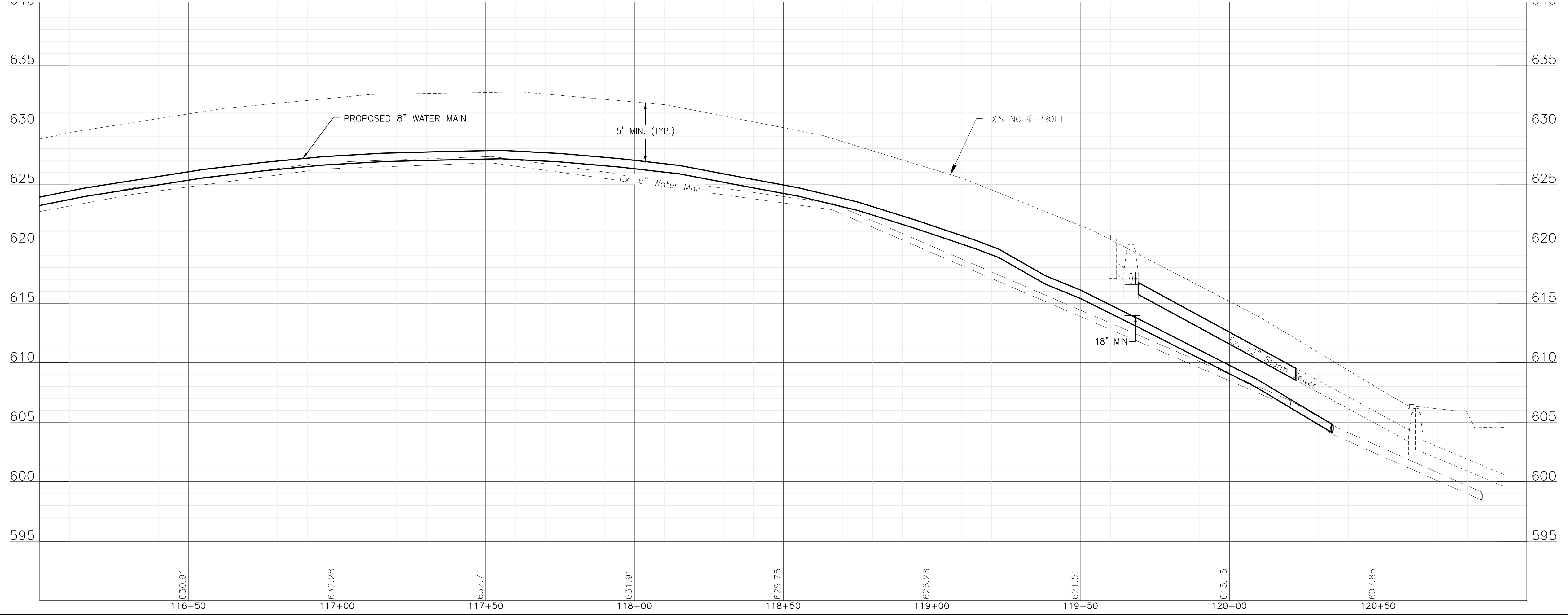
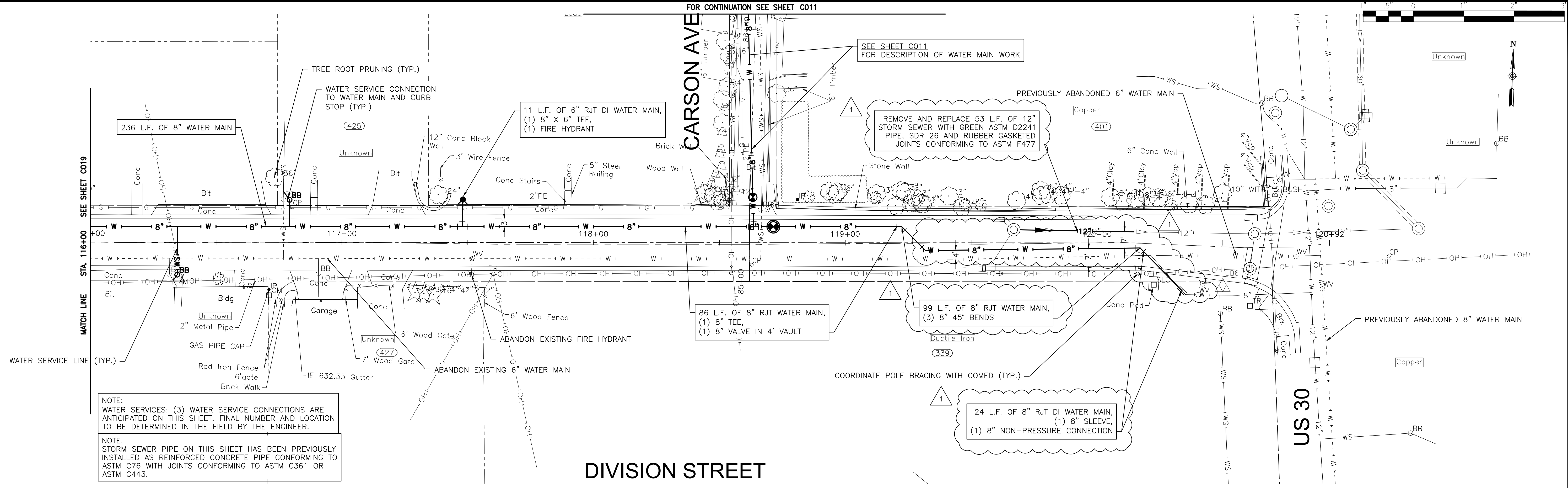
CITY OF JOLIET, ILLINOIS
UPPER BLUFF 2025 WATER MAIN IMPROVEMENTS
WATER MAIN REPLACEMENT IEPA LOAN NO. L17-6076

TAYLOR STREET STA. 75+50 TO STA 80+50 PLAN AND PROFILE
 SCALE: HORIZ 1"=20' / VERT 1"=5'
 PROJECT NO: 2325880.00

DESIGNED - RMM	TOTAL SHEETS	SHEET NO.
DRAWN - UKB	39	C014
CHECKED - MJF		
DATE - 11/06/2024		

FINAL DESIGN FOR BIDDING

P:\JOLTC\2325880-2025 WATER MAIN\CAD\UPPER BLUFF\01_CIVIL_3D\01_SHTS-PLANS\UPPER BLUFF-DIVISION.DWG 116+00.00
 Plotted: 11/5/2024 4:52 PM By: ANACINO
 Copyright © 2024, By Baxter & Woodman, Inc.
 State of Illinois - Professional Design Firm
 License No. - 184-001121 - Expires 4-30-25



CONSULTANTS	REVISED - Δ ADDENDUM #1 11/7/24
	REVISED -
	REVISED -
	REVISED -

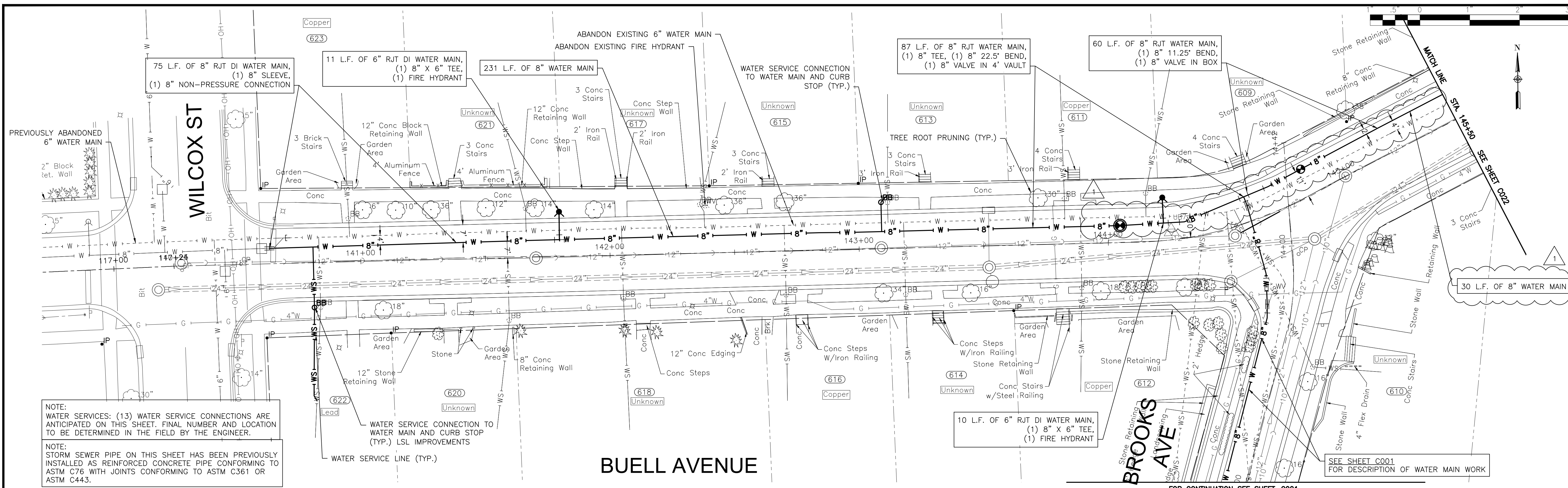
CITY OF JOLIET, ILLINOIS
UPPER BLUFF 2025 WATER MAIN IMPROVEMENTS
CITY OF JOLIET CONTRACT NO. 2852-0125

DIVISION STREET STA. 116+00 TO STA. 121+00 PLAN AND PROFILE

SCALE: HORIZ 1"=20' / VERT 1"=5'
 PROJECT NO: 2325880.00

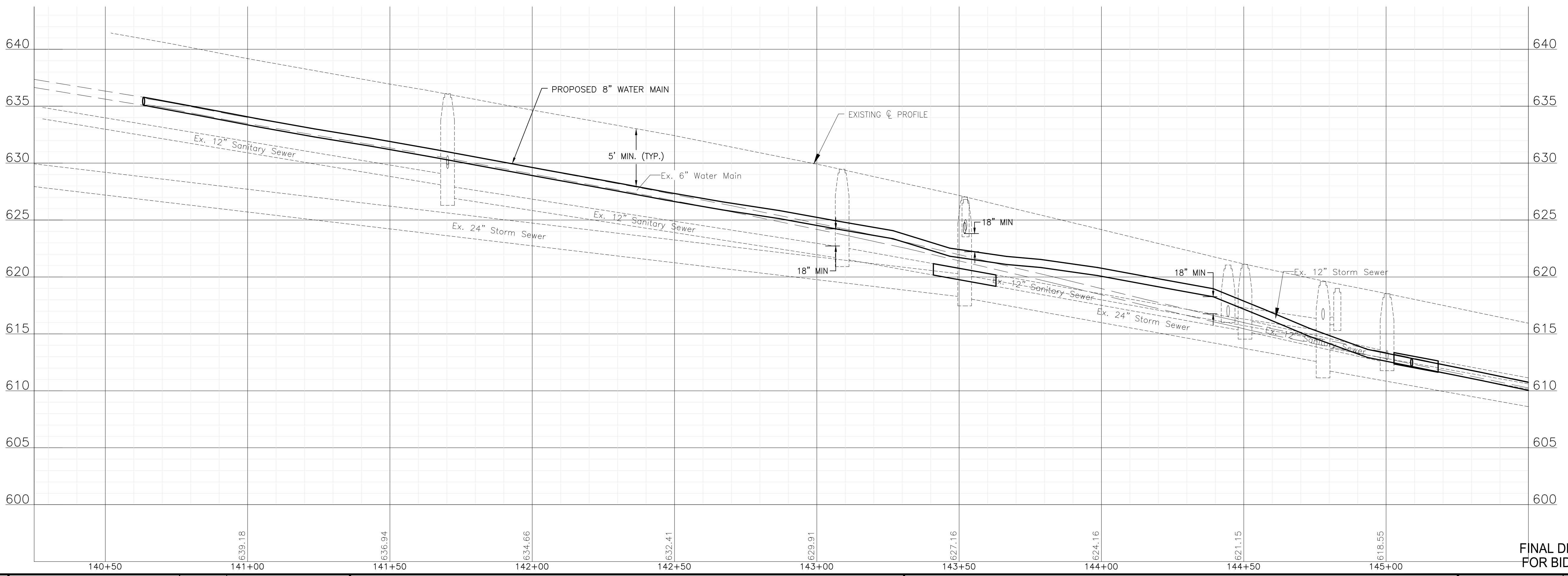
DESIGNED - RMM	TOTAL SHEETS	SHEET NO.
DRAWN - UKB	39	C020
CHECKED - MJF		
DATE - 11/06/2024		

FINAL DESIGN FOR BIDDING



NOTE:
WATER SERVICES: (13) WATER SERVICE CONNECTIONS ARE ANTICIPATED ON THIS SHEET. FINAL NUMBER AND LOCATION TO BE DETERMINED IN THE FIELD BY THE ENGINEER.

NOTE:
STORM SEWER PIPE ON THIS SHEET HAS BEEN PREVIOUSLY INSTALLED AS REINFORCED CONCRETE PIPE CONFORMING TO ASTM C76 WITH JOINTS CONFORMING TO ASTM C361 OR ASTM C443.



P:\JOLTC\2325880-2025 WATER MAIN\UPPER BLUFF\01_CIVIL_3D\01_SHTS-PLANS-UPPER BLUFF-BUELLAVE.DWG 140+25.00
 Plotted: 11/5/2024 4:52 PM By: ANACINO
 Copyright © 2024, By: Baxter & Woodman, Inc.
 State of Illinois - Professional Design Firm
 License No. - 184-001121 - Expires 4-30-25



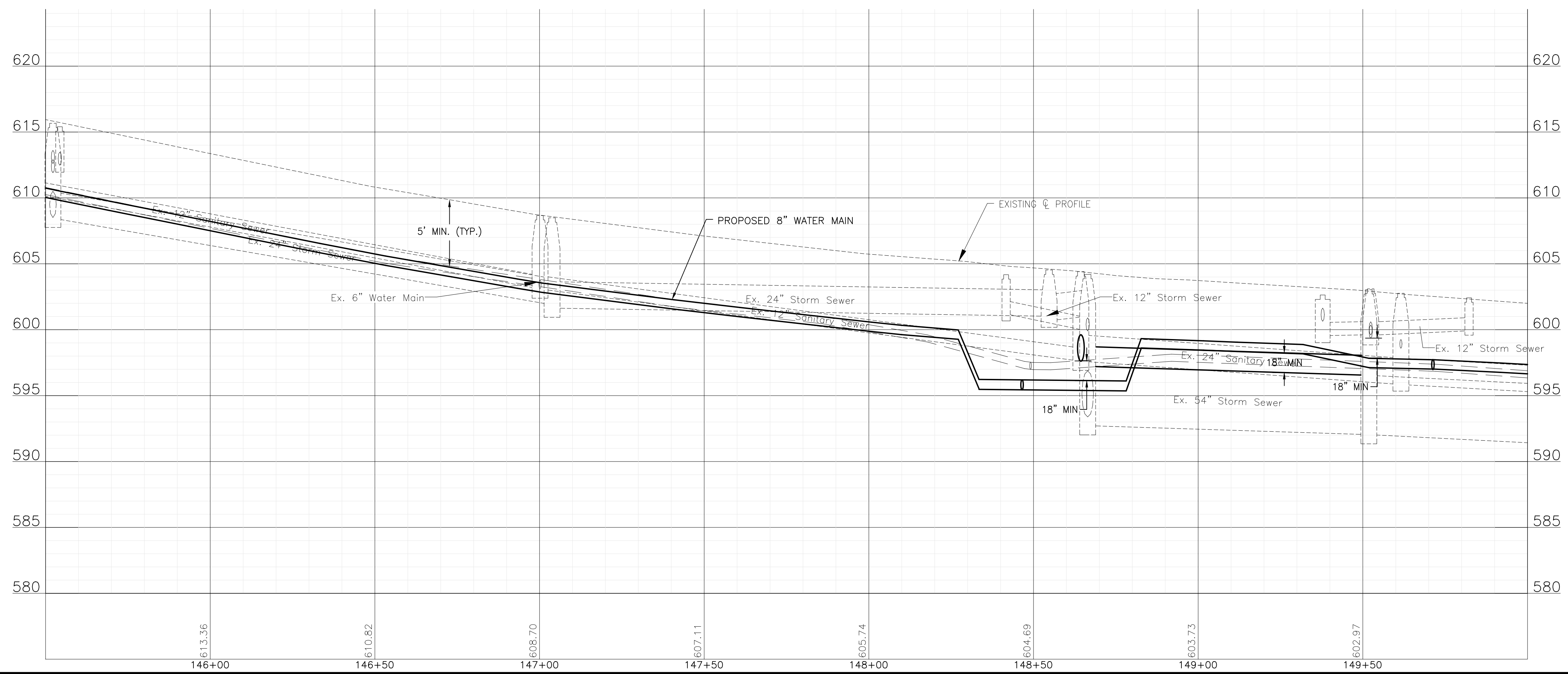
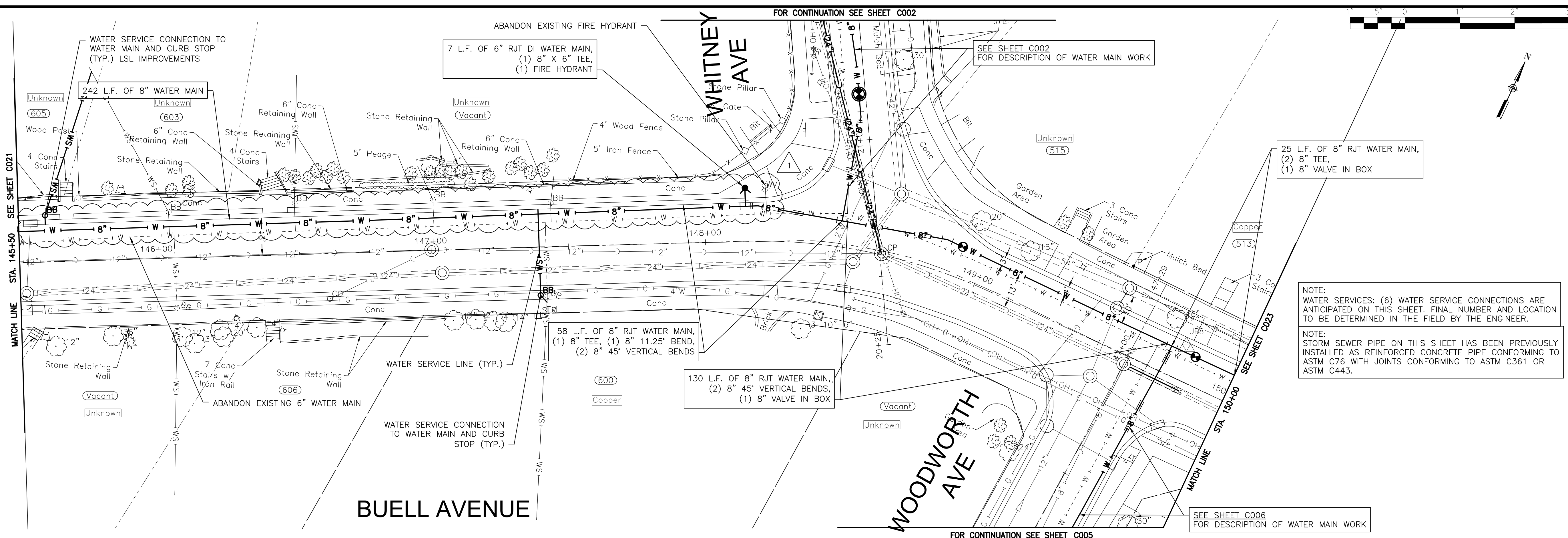
CONSULTANTS	REVISED - ADDENDUM #1 11/7/24
	REVISED -
	REVISED -
	REVISED -

CITY OF JOLIET, ILLINOIS
UPPER BLUFF 2025 WATER MAIN IMPROVEMENTS
CITY OF JOLIET CONTRACT NO. 2852-0125

BUELL AVENUE STA. 140+25 TO STA. 145+50 PLAN AND PROFILE
 SCALE: HORIZ 1"=20' / VERT 1"=5'
 PROJECT NO: 2325880.00

DESIGNED - RMM	TOTAL SHEETS	SHEET NO.
DRAWN - UKB	39	C021
CHECKED - MJF		
DATE - 11/06/2024		

FINAL DESIGN FOR BIDDING



P:\JOLTC\2325880-2025 WATER MAIN\CAD\UPPER BLUFF\01_CIVIL_3D\01_SHTS-PLANS\PLANS\2325880-UPPER_BLUFF-BUELLAVE.DWG 145+50.00
 Plotted: 11/7/2024 4:52 PM By: ANACINO
 Copyright © 2024, By Baxter & Woodman, Inc.
 State of Illinois - Professional Design Firm
 License No. - 184-001121 - Expires 4-30-25



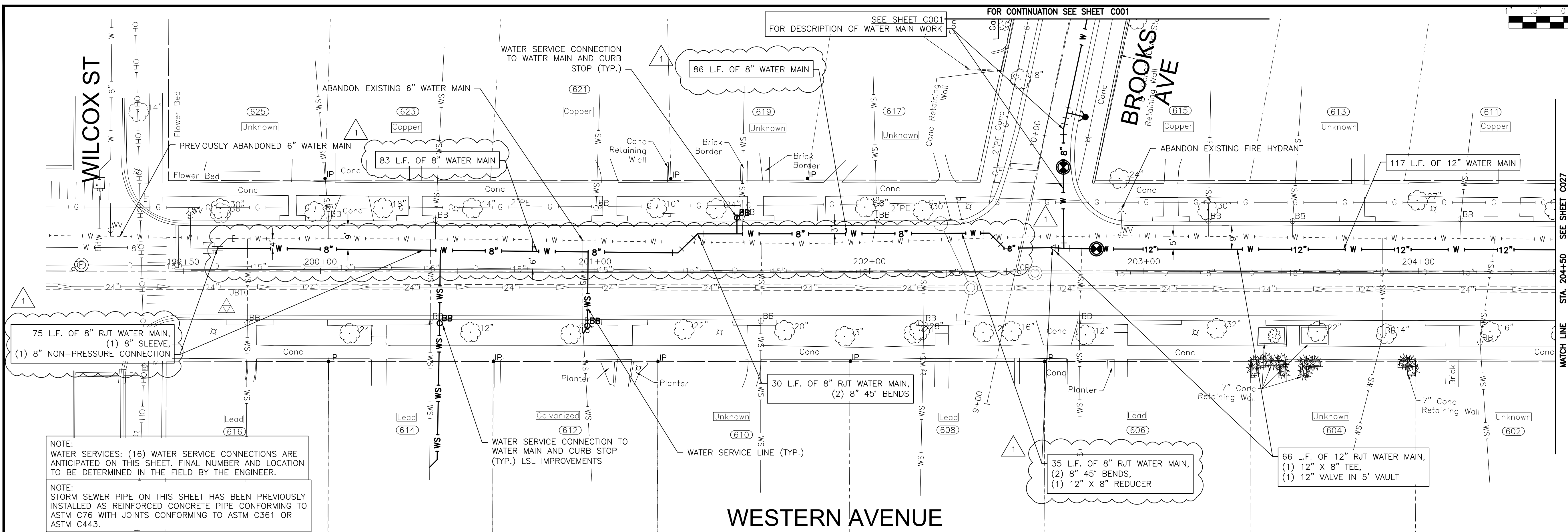
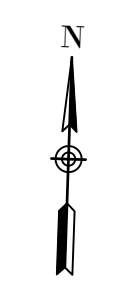
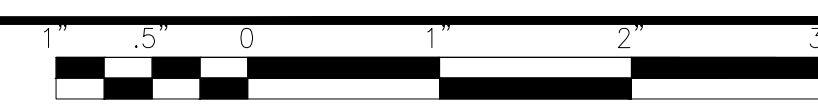
CONSULTANTS	REVISED - Δ ADDENDUM #1 11/7/24
	REVISED -
	REVISED -
	REVISED -

CITY OF JOLIET, ILLINOIS
UPPER BLUFF 2025 WATER MAIN IMPROVEMENTS
CITY OF JOLIET CONTRACT NO. 2852-0125

BUELL AVENUE STA. 145+50 TO STA. 150+00 PLAN AND PROFILE
 SCALE: HORIZ 1"=20' / VERT 1"=5'
 PROJECT NO: 2325880.00

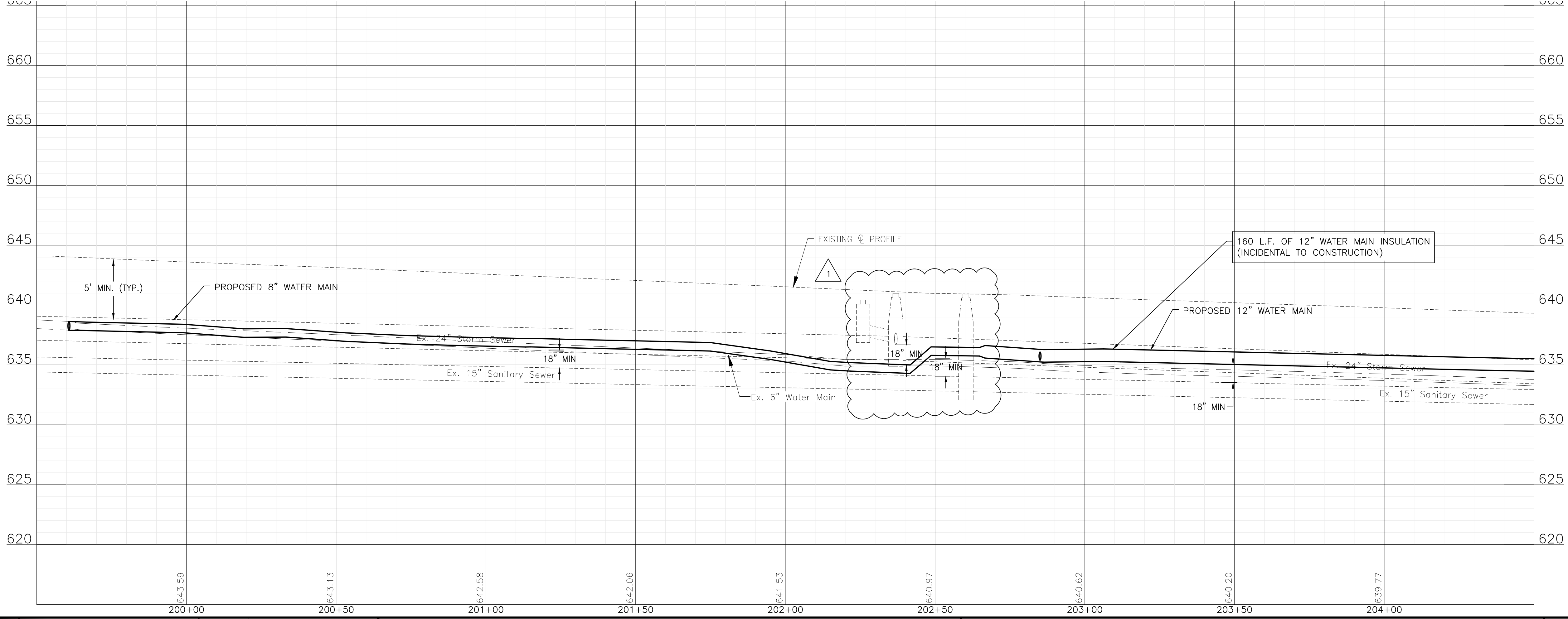
DESIGNED - RMM	TOTAL SHEETS	SHEET NO.
DRAWN - UKB	39	C022
CHECKED - MJF		
DATE - 11/06/2024		

FINAL DESIGN FOR BIDDING



NOTE:
WATER SERVICES: (16) WATER SERVICE CONNECTIONS ARE ANTICIPATED ON THIS SHEET. FINAL NUMBER AND LOCATION TO BE DETERMINED IN THE FIELD BY THE ENGINEER.

NOTE:
STORM SEWER PIPE ON THIS SHEET HAS BEEN PREVIOUSLY INSTALLED AS REINFORCED CONCRETE PIPE CONFORMING TO ASTM C76 WITH JOINTS CONFORMING TO ASTM C361 OR ASTM C443.



P:\JOLTC\2325880-2025 WATER MAIN\CAD\UPPER BLUFF\01_CIVIL_3D\01_SHTS-PLANS\2325880-UPPER_BLUFF-WESTERNAVE.DWG 199+50.00
 Plotted: 11/5/2024 4:54 PM By: ANACINO
 Copyright © 2024, By Baxter & Woodman, Inc.
 State of Illinois - Professional Design Firm
 License No. - 184-001121 - Expires 4-30-25



CONSULTANTS	REVISED - Δ ADDENDUM #1 11/7/24
	REVISED -
	REVISED -
	REVISED -

CITY OF JOLIET, ILLINOIS
UPPER BLUFF 2025 WATER MAIN IMPROVEMENTS
CITY OF JOLIET CONTRACT NO. 2852-0125

WESTERN AVENUE STA. 199+50 TO STA. 204+50 PLAN AND PROFILE
 SCALE: HORIZ 1"=20' / VERT 1"=5'
 PROJECT NO: 2325880.00

DESIGNED - RMM	TOTAL SHEETS	SHEET NO.
DRAWN - UKB	39	C026
CHECKED - MJF		
DATE - 11/06/2024		

FINAL DESIGN FOR BIDDING

FOR CONTINUATION SEE SHEET C006

FOR CONTINUATION SEE SHEET C008

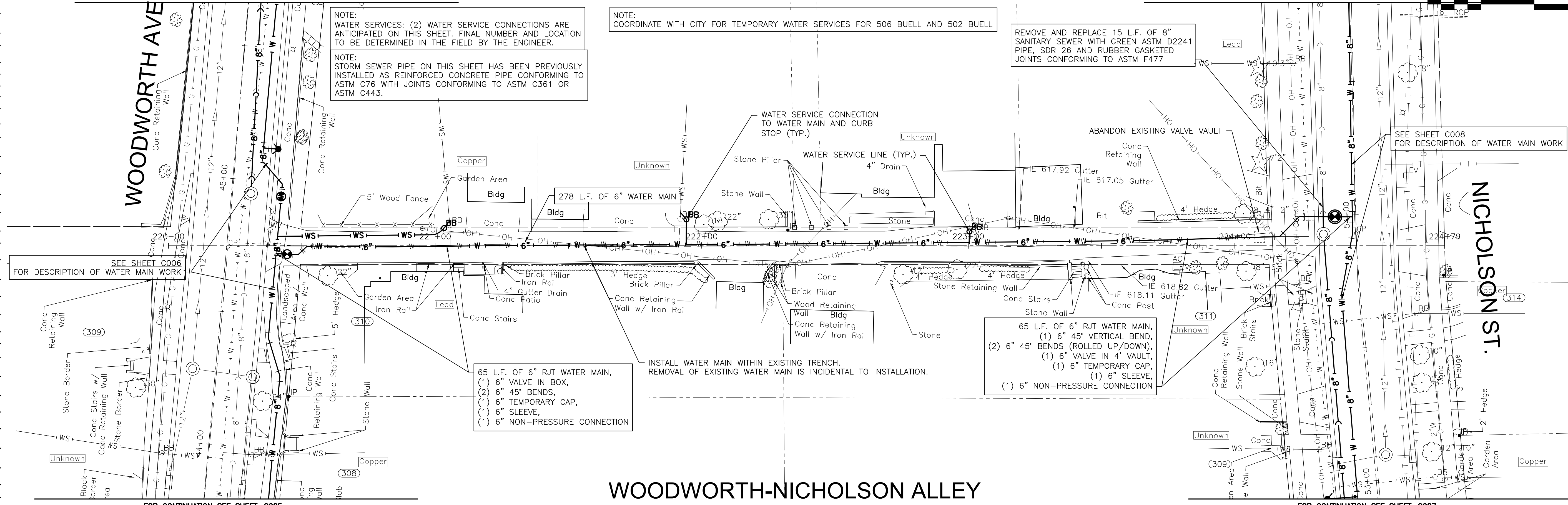
NOTE:
WATER SERVICES: (2) WATER SERVICE CONNECTIONS ARE ANTICIPATED ON THIS SHEET. FINAL NUMBER AND LOCATION TO BE DETERMINED IN THE FIELD BY THE ENGINEER.

NOTE:
STORM SEWER PIPE ON THIS SHEET HAS BEEN PREVIOUSLY INSTALLED AS REINFORCED CONCRETE PIPE CONFORMING TO ASTM C76 WITH JOINTS CONFORMING TO ASTM C361 OR ASTM C443.

NOTE: COORDINATE WITH CITY FOR TEMPORARY WATER SERVICES FOR 506 BUELL AND 502 BUELL

REMOVE AND REPLACE 15 L.F. OF 8" SANITARY SEWER WITH GREEN ASTM D2241 PIPE, SDR 26 AND RUBBER GASKETED JOINTS CONFORMING TO ASTM F477

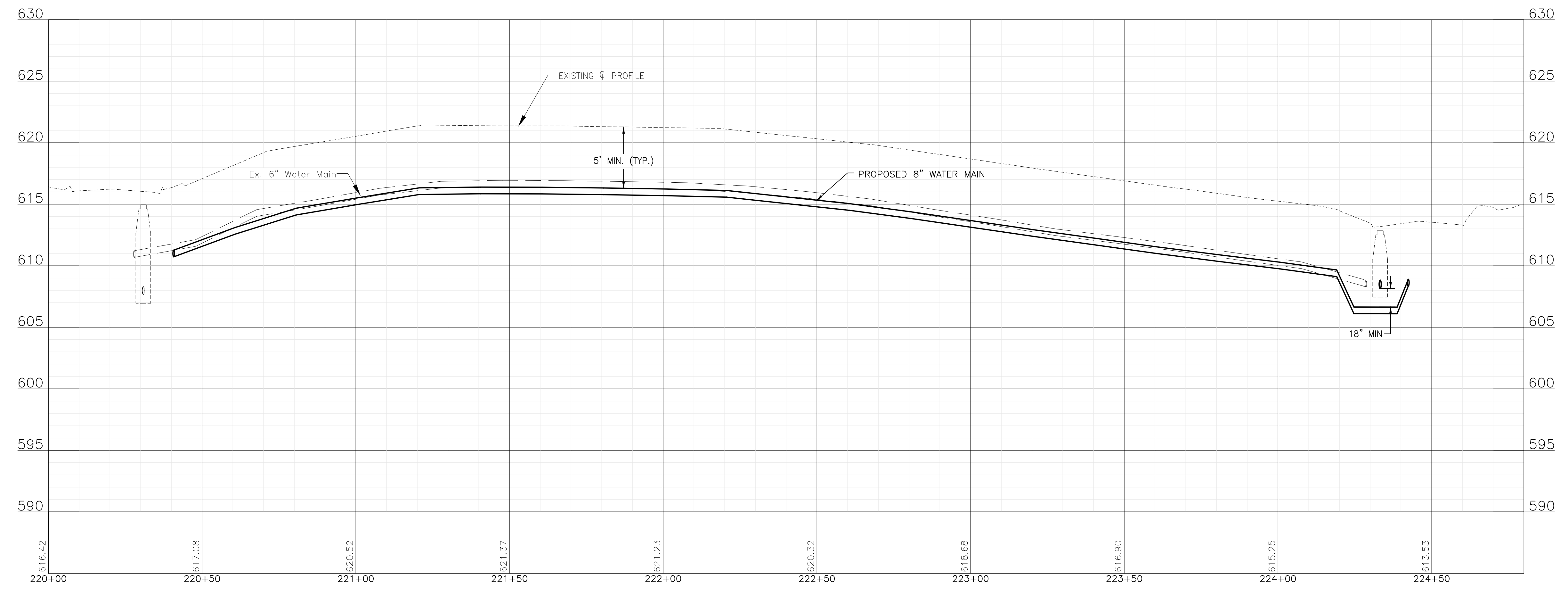
SEE SHEET C008 FOR DESCRIPTION OF WATER MAIN WORK



WOODWORTH-NICHOLSON ALLEY

FOR CONTINUATION SEE SHEET C005

FOR CONTINUATION SEE SHEET C007



FINAL DESIGN FOR BIDDING

P:\JOLIC\2325880-2025 WATER MAIN\CAD\UPPER BLUFF\01_CIVIL_3D\01_SHOTS-PLANS-UPPER BLUFF-BUELLAVE.DWG 220+00.00
 Plotted: 11/25/2024 4:54 PM By: ANACINO
 Copyright © 2024, By: Baxter & Woodman, Inc.
 State of Illinois - Professional Design Firm
 License No. - 184-001121 - Expires 4-30-25



CONSULTANTS	REVISED - 1	ADDENDUM #1 11/7/24
	REVISED -	
	REVISED -	
	REVISED -	

CITY OF JOLIET, ILLINOIS
UPPER BLUFF 2025 WATER MAIN IMPROVEMENTS
CITY OF JOLIET CONTRACT NO. 2852-0125

WOODWORTH ALLEY STA. 220+00 TO STA. 224+50 PLAN AND PROFILE

SCALE: HORIZ 1"=20' / VERT 1"=5'

PROJECT NO: 2325880.00

DESIGNED - RMM	TOTAL SHEETS	SHEET NO.
DRAWN - ABN/UKB	39	C030
CHECKED - MJF		
DATE - 11/06/2024		

00 41 00.41

BID FORM

ONE ORIGINAL BID SHALL BE SUBMITTED

To: City of Joliet
Mayor and City Council
150 W. Jefferson Street
Joliet, IL 60432
(hereinafter called Owner)

From: _____
Company

Address

City State Zip Code

() _____
Telephone

E-MAIL

(hereinafter called Bidder)

1. The undersigned Bidder proposes and agrees, if this Bid is accepted, to enter into an Agreement with Owner in the form included in the Bidding Documents to furnish all labor, materials, tools, and services required for the construction of the Upper Bluff Water Main Improvements for the City of Joliet, Will County, Illinois (Engineers' Job No. 2325880.00), all in accordance with the Bidding Documents prepared by Baxter & Woodman, Inc., Consulting Engineers.
2. Bidder accepts all of the terms and conditions of the Advertisement for Bids and Bidder Instructions, including without limitation those dealing with the disposition of Bid Security. This Bid will remain open for 120 days after the date of Bid opening or for such longer period of time that Bidder may agree to in writing upon request of Owner. Bidder will sign and submit the Agreement with the Bonds and other documents required by the Bidding Documents within 10 days after the date of Owner's Notice of Award.
3. In submitting this Bid, Bidder represents, as set forth in the Agreement, that:
 - a. Bidder has examined copies of all the Bidding Documents.
 - b. Bidder is familiar with the nature and extent of the Bidding Documents, Work, site, locality, and all local conditions and legal and regulatory requirements that in any

BID FORM

manner may affect cost, progress, performance, or furnishing of the Work, and has made such independent investigations as Bidder deems necessary.

- c. Bidder has obtained and carefully studied (or assumes responsibility for having done so) all additional or supplementary examinations, investigations, explorations, tests, studies and data concerning conditions (surface, subsurface and Underground Facilities) at or contiguous to the Site which may affect cost, progress, or performance of the Work or which relate to any aspect of the means, methods, techniques, sequences, and procedures of construction to be employed by Bidder, including applying the specific means, methods, techniques, sequences, and procedures of construction expressly required by the Bidding Documents to be employed by Bidder, and safety precautions and programs incident thereto.
- d. Bidder does not consider that any further examinations, investigations, explorations, tests, studies, or data are necessary for the determination of this Bid for performance of the Work at the price(s) bid and within the times and in accordance with the other terms and conditions of the Bidding Documents.
- e. Bidder is aware of the general nature of work to be performed by Owner and others at the Site that relates to the Work as indicated in the Bidding Documents.
- f. Bidder has correlated the information known to Bidder, information and observations obtained from visits to the Site, reports and drawings identified in the Bidding Documents, and all additional examinations, investigations, explorations, tests, studies, and data with the Bidding Documents.
- g. Bidder has given Engineer written notice of all conflicts, errors, ambiguities, or discrepancies that Bidder has discovered in the Bidding Documents, and the written resolution thereof by Engineer is acceptable to Bidder.
- h. The Bidding Documents are generally sufficient to indicate and convey understanding of all terms and conditions for the Work for which this Bid is submitted.
- i. This Bid is genuine and not made in the interest or on behalf of any undisclosed person, firm or corporation, and is not submitted in conformity with any agreement or rules of any group, association, organization, or corporation; Bidder has not directly or indirectly induced or solicited any other Bidder to submit a false or sham Bid; Bidder has not solicited or induced any person, firm, or a corporation to refrain from bidding; and Bidder has not sought by collusion to obtain for itself any advantage over any other Bidder or over Owner.
- j. Bidder is not barred from contracting with the Owner as a result of a violation 720 ILCS 5/33 et seq.
- k. Bidder agrees that no less than the prevailing rate of wages under the Davis-Bacon Wage Act (40 USC 276a through 276a-5) as determined by the U.S. Department of

BID FORM

Labor shall be paid to all laborers, workmen and mechanics performing work under this contract.

- I. Bidder agrees to cooperate with all Davis-Bacon Wage Act compliance activities including employee interviews by Owner.
 - m. Bidder complies with the provisions of the Employment of Illinois Workers on Public Works Act (30 ILCS 570/) as they may apply to this Project.
 - n. Bidder will comply with the requirements of Sections 22.51(f)(2)(B) and 22.51a(d)(2)(B) of the Illinois Environmental Protection Act ([415 ILCS5/22.51(f)(2)(B)] and [415 ILCS5/22.51a(d)(2)(B)]) for the disposal of uncontaminated soils including uncontaminated soil mixed with other clean construction or demolition debris (CCDD) materials and has included any costs associated with compliance in the Bid.
4. Bidder submits the following Schedule of Unit Prices for the Work to be performed in accordance with the Bidding Documents and agrees that items of work not specifically mentioned in the Schedule which are necessary and required to complete the Work intended shall be done incidental to and as part of the items of work for which a unit price is given, and understands that no additional payment will be made for such incidental work.

Bidder agrees that the Owner may select any one or more Parts of this Bid, and if awarded the Contract for such Part or Parts of this Bid, the Bidder agrees to perform and complete the work at the Contract Unit Prices submitted herein.

SCHEDULE OF UNIT PRICES					
NO.	PAY ITEM	APPROX. QUANTITY	UNIT	UNIT PRICE	TOTAL FOR ITEM
PART A - WATER MAIN IMPROVEMENTS					
1	TRAFFIC CONTROL AND PROTECTION (SPECIAL)	1	LSUM	Lump Sum	\$
2	GRANULAR TRENCH BACKFILL	7,400	CUYD	\$	\$
3	TRENCH BACKFILL (SPECIAL)	100	CUYD	\$	\$
4	WATER MAIN (OPEN CUT), 4-INCH DI	49	FOOT	\$	\$
5	WATER MAIN (OPEN CUT), 6-INCH	1,130	FOOT	\$	\$
6	WATER MAIN (OPEN CUT), 6-INCH DI	246	FOOT	\$	\$
7	WATER MAIN (OPEN CUT), 8-INCH	8,010	FOOT	\$	\$

BID FORM

SCHEDULE OF UNIT PRICES					
NO.	PAY ITEM	APPROX. QUANTITY	UNIT	UNIT PRICE	TOTAL FOR ITEM
8	WATER MAIN (OPEN CUT), 8-INCH DI	254	FOOT	\$	\$
9	WATER MAIN (OPEN CUT), 10-INCH DI	7	FOOT	\$	\$
10	WATER MAIN (OPEN CUT), 12-INCH	1,647	FOOT	\$	\$
11	WATER MAIN (DIRECTIONALLY DRILLED), 8-INCH	959	FOOT	\$	\$
12	CASING PIPE (OPEN CUT), 16-INCH	24	FOOT	\$	\$
13	CASING PIPE (TUNNELING UNDER SEWER), 16-INCH	33	FOOT	\$	\$
14	MISCELLANEOUS FITTINGS	15,000	POUND	\$	\$
15	CONNECT TO WATER MAIN (NON-PRESSURE), 4-INCH	1	EACH	\$	\$
16	CONNECT TO WATER MAIN (NON-PRESSURE), 6-INCH	2	EACH	\$	\$
17	CONNECT TO WATER MAIN (NON-PRESSURE), 8-INCH	8	EACH	\$	\$
18	CONNECT TO WATER MAIN (NON-PRESSURE), 10-INCH	1	EACH	\$	\$
19	CONNECT TO WATER MAIN (NON-PRESSURE), 12-INCH	1	EACH	\$	\$
20	CONNECT TO WATER MAIN (PRESSURE), 12-INCH X 8-INCH	1	EACH	\$	\$
21	GATE VALVE, 4-INCH	1	EACH	\$	\$
22	GATE VALVE, 6-INCH	5	EACH	\$	\$
23	GATE VALVE, 8-INCH	20	EACH	\$	\$
24	GATE VALVE, 12-INCH	5	EACH	\$	\$
25	VALVE BOX	8	EACH	\$	\$
26	VALVE VAULT, 4-FOOT DIAMETER	18	EACH	\$	\$
27	VALVE VAULT, 5-FOOT DIAMETER	6	EACH	\$	\$
28	VALVE VAULT (ADDITIONAL DEPTH), 4-FOOT DIAMETER	2	VFT	\$	\$

BID FORM

00 41 00.41-4 (2325880.00) IEPA-PWSLP Revision dated November 7, 2024

SCHEDULE OF UNIT PRICES					
NO.	PAY ITEM	APPROX. QUANTITY	UNIT	UNIT PRICE	TOTAL FOR ITEM
29	VALVE VAULT (ADDITIONAL DEPTH), 5-FOOT DIAMETER	2	VFT	\$	\$
30	FIRE HYDRANT	23	EACH	\$	\$
31	FIRE HYDRANT BARREL EXTENSION	2	VFT	\$	\$
32	LINE STOP, 4-INCH	1	EACH	\$	\$
33	LINE STOP, 6-INCH	1	EACH	\$	\$
34	LINE STOP, 8-INCH	1	EACH	\$	\$
35	LINE STOP, 10-INCH	1	EACH	\$	\$
36	LINE STOP, 12-INCH	1	EACH	\$	\$
37	SANITARY SEWER REMOVAL AND REPLACEMENT, 6-INCH	27	FOOT	\$	\$
38	SANITARY SEWER REMOVAL AND REPLACEMENT, 8-INCH	401	FOOT	\$	\$
39	SANITARY SEWER REMOVAL AND REPLACEMENT, 10-INCH	52	FOOT	\$	\$
40	SANITARY SEWER REMOVAL AND REPLACEMENT, 12-INCH	100	FOOT	\$	\$
41	SANITARY SEWER REMOVAL AND REPLACEMENT, 18-INCH	38	FOOT	\$	\$
42	SANITARY SEWER REMOVAL AND REPLACEMENT, 24-INCH	194	FOOT	\$	\$
43	SANITARY SEWER MANHOLE, TYPE A, 5-FT DIAMETER, 0-8 FT DEEP	1	EACH	\$	\$
44	STORM SEWER REMOVAL AND REPLACEMENT, 12-INCH	224	FOOT	\$	\$
45	STORM SEWER REMOVAL AND REPLACEMENT, 15-INCH	20	FOOT	\$	\$
46	STORM SEWER REMOVAL AND REPLACEMENT, 21-INCH	32	FOOT	\$	\$
47	STORM SEWER REMOVAL AND REPLACEMENT, 24-INCH	27	FOOT	\$	\$
48	STORM SEWER MANHOLE, TYPE A, 5-FT DIAMETER, TYPE 1 FRAME, CLOSED LID, 0-8 FT DEEP	1	EACH	\$	\$

BID FORM

00 41 00.41-5 (2325880.00) IEPA-PWSLP Revision dated November 7, 2024

SCHEDULE OF UNIT PRICES					
NO.	PAY ITEM	APPROX. QUANTITY	UNIT	UNIT PRICE	TOTAL FOR ITEM
49	ABANDONMENT OF EXISTING WATER MAINS AND APPURTENANCES	1	LSUM	Lump Sum	\$
51	WATER SERVICE CONNECTION TO WATER MAIN AND CURB STOP, 1-INCH	156	EACH	\$	\$
51	WATER SERVICE CONNECTION TO WATER MAIN AND CURB STOP, 1.5-INCH	2	EACH	\$	\$
52	WATER SERVICE CONNECTION TO WATER MAIN AND CURB STOP, 2-INCH	2	EACH	\$	\$
53	WATER SERVICE LINE TYPE K - OPEN CUT, 1-INCH	1,302	FOOT	\$	\$
54	WATER SERVICE LINE TYPE K - OPEN CUT, 1.5-INCH	15	FOOT	\$	\$
55	WATER SERVICE LINE TYPE K - OPEN CUT, 2-INCH	40	FOOT	\$	\$
56	WATER SERVICE LINE TYPE K - DIRECTIONAL DRILLING, 1-INCH	3,485	FOOT	\$	\$
57	WATER SERVICE LINE TYPE K - DIRECTIONAL DRILLING, 1.5-INCH	30	FOOT	\$	\$
58	WATER SERVICE LINE TYPE K - DIRECTIONAL DRILLING, 2-INCH	80	FOOT	\$	\$
59	WATER SERVICE CASING PIPE	300	FOOT	\$	\$
60	PROJECT MANAGEMENT	36	HOUR	\$	\$
61	UTILITY LOCATION - PRIVATE PROPERTY	12	EACH	\$	\$
62	LANDSCAPING PROJECT MANAGEMENT	24	HOUR	\$	\$
63	LANDSCAPING RESTORATION ALLOWANCE	12	EACH	\$	\$
64	SHRUB AND BRUSH DISPOSAL	24	EACH	\$	\$
65	FENCE TO BE REMOVED AND RE-ERECTED	60	FOOT	\$	\$
66	CRIMP WATER SERVICE	12	EACH	\$	\$

BID FORM

00 41 00.41-6 (2325880.00) IEPA-PWSLP Revision dated November 7, 2024

SCHEDULE OF UNIT PRICES					
NO.	PAY ITEM	APPROX. QUANTITY	UNIT	UNIT PRICE	TOTAL FOR ITEM
67	REMOVE AND REPLACE DRAIN TILES, 6-INCH THROUGH 12-INCH	300	FOOT	\$	\$
68	ADJUSTING SANITARY SEWER SERVICE LINE	60	EACH	\$	\$
69	EXPLORATORY EXCAVATION	12	EACH	\$	\$
70	INLET PROTECTION FILTER	95	EACH	\$	\$
71	RESTORATION OF LAWNS AND PARKWAYS	1,100	SQYD	\$	\$
72	TEMPORARY HOT-MIX ASPHALT PAVEMENT	450	SQYD	\$	\$
73	CLASS B PATCH	100	SQYD	\$	\$
74	HOT-MIX ASPHALT REMOVAL AND REPLACEMENT, 2.5-INCH BINDER 1.5-INCH SURFACE	6,700	SQYD	\$	\$
75	HOT-MIX ASPHALT REMOVAL AND REPLACEMENT, 3-INCH BINDER 2-INCH SURFACE	200	SQYD	\$	\$
76	HOT-MIX ASPHALT REMOVAL AND REPLACEMENT, 8-INCH BINDER 2-INCH SURFACE	1,600	SQYD	\$	\$
77	HOT-MIX ASPHALT SURFACE MILL AND OVERLAY OVER PATCHES, 1.5-INCH	1,500	SQYD	\$	\$
78	HOT-MIX ASPHALT DRIVEWAY REMOVAL AND REPLACEMENT, 3-INCH	100	SQYD	\$	\$
79	PCC DRIVEWAY REMOVAL AND REPLACEMENT, 6-INCH	350	SQYD	\$	\$
80	GRAVEL DRIVEWAY REMOVAL AND REPLACEMENT	20	SQYD	\$	\$
81	CONCRETE CURB AND GUTTER REMOVAL AND REPLACEMENT	2,300	FOOT	\$	\$
82	PCC SIDEWALK REMOVAL AND REPLACEMENT	5,800	SQFT	\$	\$
83	BRICK SIDEWALK REMOVAL AND REPLACEMENT	100	SQFT	\$	\$
84	DETECTABLE WARNINGS	110	SQFT	\$	\$

BID FORM

00 41 00.41-7 (2325880.00) IEPA-PWSLP Revision dated November 7, 2024

SCHEDULE OF UNIT PRICES					
NO.	PAY ITEM	APPROX. QUANTITY	UNIT	UNIT PRICE	TOTAL FOR ITEM
85	PAVEMENT MARKING - LINE, 4-INCH (THERMOPLASTIC)	80	FOOT	\$	\$
86	PAVEMENT MARKING - LINE, 6-INCH (THERMOPLASTIC)	920	FOOT	\$	\$
87	PAVEMENT MARKING - LINE, 12-INCH (THERMOPLASTIC)	610	FOOT	\$	\$
88	PAVEMENT MARKING - LINE, 24-INCH (THERMOPLASTIC)	310	FOOT	\$	\$
89	POLYUREA PAVEMENT MARKING - LINE, 4-INCH	120	FOOT	\$	\$
90	POLYUREA PAVEMENT MARKING - LINE, 24-INCH	30	FOOT	\$	\$
91	REMOVE AND RESET RAILING	10	FOOT	\$	\$
92	REMOVAL AND REPLACEMENT OF SIGNS	3	EACH	\$	\$
93	TREE ROOT PRUNING	84	EACH	\$	\$
94	TREE TRIMMING	1	LSUM	Lump Sum	\$
95	DUST CONTROL	1	DAY	\$	\$
96	MATTING FOR PROTECTION OF BRICK PAVERS	125	SQYD	\$	\$
97	ROCK EXCAVATION	100	CUYD	\$	\$
98	REMOVAL AND REPLACEMENT OF UNSUITABLE MATERIAL	141	CUYD	\$	\$
99	SOIL TESTS FOR CONTAMINANTS	20	EACH	\$	\$
100	CONTAMINATED WASTE DISPOSAL	141	CUYD	\$	\$
101	MAINTENANCE OF EXISTING TRAFFIC SIGNAL INSTALLATION	1	EACH	\$	\$
SUBTOTAL PART A - WATER MAIN IMPROVEMENTS:				\$	
PART B - LEAD SERVICE LINE IMPROVEMENTS					
102	PROJECT MANAGEMENT (LEAD SERVICE REPLACEMENT)	240	HOUR	\$	\$

BID FORM

00 41 00.41-8 (2325880.00) IEPA-PWSLP Revision dated November 7, 2024

SCHEDULE OF UNIT PRICES					
NO.	PAY ITEM	APPROX. QUANTITY	UNIT	UNIT PRICE	TOTAL FOR ITEM
103	WATER SERVICE LINE TYPE L (LEAD SERVICE REPLACEMENT), 3/4-INCH	25	FOOT	\$	\$
104	WATER SERVICE LINE TYPE L (LEAD SERVICE REPLACEMENT), 1-INCH	800	FOOT	\$	\$
105	WATER SERVICE LINE TYPE L (LEAD SERVICE REPLACEMENT), 1.5-INCH	25	FOOT	\$	\$
106	WATER SERVICE LINE TYPE L (LEAD SERVICE REPLACEMENT), 2-INCH	25	FOOT	\$	\$
107	WATER SERVICE CASING PIPE (LEAD SERVICE REPLACEMENT), 2-INCH	800	FOOT	\$	\$
108	WATER SERVICE CONNECTION ON PRIVATE PROPERTY - BASEMENT OR CRAWL SPACE (LEAD SERVICE REPLACEMENT)	40	EACH	\$	\$
109	WATER SERVICE CONNECTION ON PRIVATE PROPERTY - SLAB (LEAD SERVICE REPLACEMENT)	40	EACH	\$	\$
110	UTILITY LOCATION - PRIVATE PROPERTY (LEAD SERVICE REPLACEMENT)	80	EACH	\$	\$
111	WATER METER RELOCATION (LEAD SERVICE REPLACEMENT)	40	EACH	\$	\$
112	WATER METER REPLACEMENT (LEAD SERVICE REPLACEMENT)	40	EACH	\$	\$
113	LANDSCAPING PROJECT MANAGEMENT (LEAD SERVICE REPLACEMENT)	160	HOUR	\$	\$
114	LANDSCAPING RESTORATION ALLOWANCE (LEAD SERVICE REPLACEMENT)	80	EACH	\$ 450.00	\$ 36,000.00
115	SHRUB AND BRUSH DISPOSAL (LEAD SERVICE REPLACEMENT)	160	EACH	\$	\$
116	FENCE TO BE REMOVED AND RE-ERECTED (LEAD SERVICE REPLACEMENT)	400	FOOT	\$	\$
117	RESTORATION OF LAWNS AND PARKWAYS (LEAD SERVICE REPLACEMENT)	450	SQYD	\$	\$

BID FORM

00 41 00.41-9 (2325880.00) IEPA-PWSLP Revision dated November 7, 2024

SCHEDULE OF UNIT PRICES					
NO.	PAY ITEM	APPROX. QUANTITY	UNIT	UNIT PRICE	TOTAL FOR ITEM
118	HOT-MIX ASPHALT REMOVAL AND REPLACEMENT, 2.5-INCH BINDER 1.5-INCH SURFACE (LEAD SERVICE REPLACEMENT)	50	SQYD	\$	\$
119	HOT-MIX ASPHALT REMOVAL AND REPLACEMENT, 6-INCH BINDER 1.5-INCH SURFACE (LEAD SERVICE REPLACEMENT)	50	SQYD	\$	\$
120	HOT-MIX ASPHALT DRIVEWAY REMOVAL AND REPLACEMENT, 3-INCH (LEAD SERVICE REPLACEMENT)	60	SQYD	\$	\$
121	PCC DRIVEWAY REMOVAL AND REPLACEMENT, 6-INCH (LEAD SERVICE REPLACEMENT)	180	SQYD	\$	\$
122	CONCRETE CURB AND GUTTER REMOVAL AND REPLACEMENT (LEAD SERVICE REPLACEMENT)	540	FOOT	\$	\$
123	PCC SIDEWALK REMOVAL AND REPLACEMENT (LEAD SERVICE REPLACEMENT)	2,600	SQFT	\$	\$
SUBTOTAL PART B - LEAD SERVICE LINE IMPROVEMENTS:				\$	
PART C - SEWER IMPROVEMENTS					
124	GRANULAR TRENCH BACKFILL (SEWER IMPROVEMENTS)	40	CUYD	\$	\$
125	STORM SEWER (OPEN CUT), 12-INCH, 0 TO 8 FT DEEP, (SEWER IMPROVEMENTS)	56	FOOT	\$	\$
126	STORM SEWER (OPEN CUT), 15-INCH, 0 TO 8 FT DEEP, (SEWER IMPROVEMENTS)	366	FOOT	\$	\$
127	STORM MANHOLE, TYPE A, 5-FT DIAMETER, TYPE 1 FRAME, CLOSED LID (SEWER IMPROVEMENTS)	4	EACH	\$	\$

BID FORM

00 41 00.41-10 (2325880.00) IEPA-PWSLP Revision dated November 7, 2024

SCHEDULE OF UNIT PRICES					
NO.	PAY ITEM	APPROX. QUANTITY	UNIT	UNIT PRICE	TOTAL FOR ITEM
128	CONNECTION TO EXISTING STORM SEWER STRUCTURE, (SEWER IMPROVEMENTS)	4	EACH	\$	\$
129	CONNECTION TO EXISTING STORM SEWER, (SEWER IMPROVEMENTS)	3	EACH	\$	\$
130	TELEVISIONING OF NEW SEWER FOR FINAL INSPECTION, (SEWER IMPROVEMENTS)	56	FOOT	\$	\$
131	CONCRETE BULKHEAD, (SEWER IMPROVEMENTS)	2	EACH	\$	\$
132	HOT-MIX ASPHALT REMOVAL AND REPLACEMENT, 2.5-INCH BINDER 1.5-INCH SURFACE, (SEWER IMPROVEMENTS)	400	SQYD	\$	\$
SUBTOTAL PART C - SEWER IMPROVEMENTS:				\$	
TOTAL AMOUNT OF BID (PARTS A, B, AND C):					
				\$	

5. Bidder agrees the Work shall be completed based on the interim milestones specified in Section 01 31 13.16. Bidder agrees the Work will be substantially completed within 180 calendar days after the Contract Time commences to run as provided in paragraph 2.03 of the General Conditions, and completed and ready for final payment in accordance with Paragraph 1.11 of the Supplementary Conditions within 210 calendar days after the Contract Time commences to run. The estimated Notice to Proceed date is June 1, 2025.
- a. Bidder accepts the provisions of the Supplementary Conditions as to liquidated damages in the event of failure to complete the Work on time.
6. Bidder submits the required Bid Security in the form of (Certified Check or Bid Bond) in the amount of _____ or _____ Percent of the Bid Amount.

BID FORM

7. Bidder will be obtaining Performance and Payment Bonds through the following local agent or broker:

Name: _____

Address: _____

Telephone: _____ email: _____

8. Bidder submits all items listed in Section 00 43 93.41 – Bid Submittal Checklist.

9. Terms used in this Bid which are defined in the Standard General Conditions of the Construction Contract included as part of the Contract Documents have the meanings assigned to them in the General Conditions.

10. Bidder acknowledges receipt of the following Addenda:

<u>Addendum Number</u>	<u>Date Received</u>
_____	_____
_____	_____
_____	_____

11. Bidder certifies that all iron and steel products used in the project for the construction, alteration, maintenance, or repair of a public water system are produced in the United States in compliance with Section 608 of the Water Resources Reform and Development Act”.

12. By submission of the Bid, Bidder certifies, and in the case of a Joint Bid each party thereto certifies as to his own organization, that in connection with the Bid:

- a. The prices in the Bid have been arrived at independently, without consultation, communication, or agreement, for the purpose of restricting competition, as to any matter relating to such prices with any other Bidder or with any competitor.
- b. Unless otherwise required by law, the prices which have been quoted in the Bid have not knowingly been disclosed by the Bidder, prior to opening, directly, or indirectly to any other Bidder or to any competitor; and
- c. No attempt has been made or will be made by the Bidder to induce any other person or firm to submit or not to submit a Bid for the purpose of restricting competition.

13. The person signing this Bid certifies that: (Check applicable box.)
- He/She is the person in the Bidder's organization responsible within that organization for the decision as to the prices being bid and that he/she has not participated, and will not participate, in any action contrary to that above; or
 - He/She is not the person in the Bidder's organization responsible within that organization for the decision as to the prices being bid but that he/she has been authorized to act as agent for the persons responsible for such decision in certifying that such persons have not participated, and will not participate, in any action contrary to that above, and as their agent shall so certify; and shall also certify that he/she has not participated, and will not participate, in any action contrary to that above.
14. Bidder is currently certified as an MBE or WBE under EPA's DBE program?
 Yes No
15. Bidder certifies that proof of current prequalification (Capital Development board or IDOT) defined in Section 00 11 13 has been submitted to the City: (check applicable box.)
- Current proof of prequalification was emailed to lschuld@baxterwoodman.com prior to the bid opening.
 - Current proof of prequalification is enclosed with the Bid.

Respectfully submitted, signed, and sealed this _____ day of _____, 20__.

(SEAL)

_____ Bidder

By _____

_____ Name - Title

ATTEST:

_____ Name - Title

END OF BID FORM

00 43 93.41

BID SUBMITTAL CHECKLIST

BIDDER submits the following documents with this Bid:

- a. Form 00 41 00.41 "BID FORM".
- b. Required Bid Security (Certified Check or Bid Bond).
- c. City of Joliet affidavits.
- d. CERTIFICATE 00 62 03 ILLINOIS DRUG FREE WORKPLACE ACT.
- e. CERTIFICATE 00 62 04 ILLINOIS CONTRACTOR CERTIFICATION.
- f. CERTIFICATE 00 62 05 ILLINOIS COMPLIANCE WITH SAFETY REQUIREMENTS.
- g. CERTIFICATE 00 62 06 ILLINOIS TAX DELINQUENCY/DEFAULT.
- h. CERTIFICATE 00 62 07 SUBSTANCE ABUSE PREVENTION PROGRAM.
- i. CERTIFICATE 00 62 08 EMPLOYMENT OF ILLINOIS WORKERS ON PUBLIC WORKS ACT.
- j. CERTIFICATE 00 62 33.13 BIDDER CERTIFICATION REGARDING THE USE OF AMERICAN IRON AND STEEL PRODUCTS
- k. CERTIFICATE 00 74 23.01 DBE FORM #1 (CONTRACTOR CERTIFICATION).
- l. CERTIFICATE 00 74 23.02 DBE FORM #3 (SUBCONTRACTOR UTILIZATION).
- m. CERTIFICATE 00 74 23.03 DBE FORM #4 (BIDDERS LIST).
- n. CERTIFICATE 00 74 23.04 BIDDER CERTIFICATION IN COMPLIANCE WITH ARTICLE 33E-11 TO THE "CRIMINAL CODE OF 2012".
- o. CERTIFICATE 00 74 23.05 USEPA CERTIFICATION OF NONSEGREGATED FACILITIES.
- p. CERTIFICATE 00 74 23.07 USEPA CERTIFICATION REGARDING DEBARMENT, SUSPENSION, AND OTHER RESPONSIBILITY MATTERS.

END OF BID SUBMITTAL CHECKLIST

BID SUBMITTAL CHECKLIST

00 43 93.41-1 (2325880.00) IEPA-PWSLP Revision dated November 7, 2024

PREVAILING WAGES

This contract shall be subject to the provisions of the Davis-Bacon Wage Act (40 USC 276a through 276a-5) as determined by the U.S. Department of Labor or the Illinois *Prevailing Wage Act* (820 ILCS 130/1 et seq.), whichever is greater.

For prevailing wage information, go to the City of Joliet website:
<https://www.joliet.gov/government/departments/finance/purchasing/prevailing-wage-information>

For current prevailing wage rates, go to the State of Illinois website:
<https://labor.illinois.gov/laws-rules/conmed/current-prevailing-rates.html>

If you cannot access or have difficulty retrieving the prevailing wage information, email purchasing@joliet.gov or call 815-724-3925 for assistance.

The Bidder is responsible for obtaining the most recent Davis-Bacon Act Wage Determination from the following website: <https://sam.gov/>

