

00 91 13

ADDENDUM NO. 1

DATE: November 9, 2023

FROM: Baxter & Woodman, Inc., Consulting Engineers

TO: Planholders of record for the Work titled:

City of Joliet, Illinois
Parkview North Water Main Improvements
City of Joliet Contract No. 2773-0124

The Bidding Documents are amended as follows:

1. DRAWINGS

- A. Delete Sheet 4 in its entirety, and insert Sheet 4, revision dated November 9, 2023, in lieu thereof.
- B. Delete Sheet 5 in its entirety, and insert Sheet 5, revision dated November 9, 2023, in lieu thereof.
- C. Delete Sheet 6 in its entirety, and insert Sheet 6, revision dated November 9, 2023, in lieu thereof.
- D. Delete Sheet 10 in its entirety, and insert Sheet 10, revision dated November 9, 2023, in lieu thereof.
- E. Delete Sheet 30 in its entirety, and insert Sheet 30, revision dated November 9, 2023, in lieu thereof.
- F. Delete Sheet 31 in its entirety, and insert Sheet 31, revision dated November 9, 2023, in lieu thereof.
- G. Delete Sheet 33 in its entirety, and insert Sheet 33, revision dated November 9, 2023, in lieu thereof.

2. SPECIFICATIONS

- A. Section 00 41 00.41, BID FORM:

Delete Section 00 41 00.41 BID FORM in its entirety and insert the attached BID FORM, revision dated November 9, 2023, in lieu thereof.

B. Section 01 22 29, MEASUREMENT AND PAYMENT:

Page 01 22 29-4, delete paragraph 1.5.13 and replace with the following:

“13. The City will provide initial field locating of sanitary service laterals. Secondary locates of sanitary services are to be performed by the Contractor as needed and is incidental to the cost of installation of water main. The City will provide GIS files of sanitary service locations to assist with the Contractor’s secondary locating. This Pay Item does not include replacement, adjustment, or relocation of any sanitary services, which shall be paid for under ADJUSTING SANITARY SEWER SERVICE LINE.”

C. Section 01 32 53, DIGITAL UTILITY DATA COLLECTION:

Page 01 32 53-2, delete paragraph 2.1.D and replace with the following:

“D. A 2-hour training session will be provided at the start of construction and support for up to 4-hours per month.”

Page 01 32 53-3, add the following between paragraphs 3.2.A.6 and 3.2.A.7 and renumber:

“7. Exposed utility crossings (gas, electric, communications, pipelines, etc.)”

Nothing in this Addendum shall be construed as changing other requirements of the Bidding Documents. Each Bidder shall acknowledge receipt of this Addendum where indicated in the Bid Form.

END OF ADDENDUM NO. 1

CITY OF JOLIET WATER SYSTEM GENERAL NOTES

- VERIFY LOCATION, SIZE, AND DEPTH OF ALL EXISTING UTILITIES PRIOR TO CONSTRUCTION OF THE WATER MAIN. THE LOCATIONS OF EXISTING UTILITIES AS SHOWN ON THE DRAWINGS HAVE BEEN DETERMINED FROM THE BEST AVAILABLE INFORMATION AND IS GIVEN FOR THE CONVENIENCE OF THE CONTRACTOR. THE ENGINEER AND OWNER DO NOT ASSUME RESPONSIBILITY FOR THE ACCURACY OF THE LOCATION SHOWN. IT SHALL BE THE CONTRACTOR'S RESPONSIBILITY TO CONTACT ALL UTILITY COMPANIES AND LOCATE UTILITIES PRIOR TO ANY WORK.
- WHENEVER IT BECOMES NECESSARY TO RELOCATE UNDERGROUND GAS MAINS, TELEPHONE CONDUIT, OR ELECTRICAL LINES OR SUPPORT OR RELOCATE UTILITY POLES, THE UTILITY COMPANY INVOLVED WILL MAKE SUCH RELOCATION OR PROVIDE POLE SUPPORT. NOTIFY THE UTILITY COMPANY PROMPTLY. THIS WORK WILL BE INCIDENTAL TO THE CONTRACT
- WHEREVER OBSTRUCTIONS NOT SHOWN ON THE DRAWINGS ARE ENCOUNTERED DURING THE PROGRESS OF THE WORK AND INTERFERE TO SUCH AN EXTENT THAT ALTERATIONS TO THE DRAWINGS ARE REQUIRED, THE ENGINEER SHALL BE NOTIFIED PRIOR TO ANY CHANGES.
- HORIZONTAL AND VERTICAL SEPARATION OF WATER MAINS AND SEWER LINES SHALL BE DONE IN ACCORDANCE WITH THE LATEST EDITION OF THE "STANDARD SPECIFICATION FOR WATER AND SEWER CONSTRUCTION IN ILLINOIS".
- PROVIDE 48 HOURS ADVANCE NOTICE TO THE CITY WHEN CONNECTION TO AN EXISTING WATER MAIN WILL BE MADE. COORDINATE SHUTDOWN OF EXISTING WATER MAINS WHEN REQUIRED WITH THE CITY. SCHEDULE THE WORK TO MINIMIZE THE NUMBER AND LENGTH OF SHUTDOWNS. PROVIDE WRITTEN NOTIFICATION OF SHUTDOWNS TO WATER USERS AFFECTED 24 HOURS IN ADVANCE.
- NOTIFY THE CITY'S PUBLIC UTILITIES DEPARTMENT IMMEDIATELY IF EXISTING LEAD WATER SERVICES ARE DISCOVERED.
- PROVIDE PROPERTY OWNERS ADVANCE NOTICE OF CONSTRUCTION ACTIVITIES THAT WILL RESTRICT THE USE OF THEIR DRIVEWAYS.
- DO NOT STORE BEDDING AND BACKFILL MATERIALS, PIPES, FITTINGS, VAULTS, OR OTHER MATERIALS IN AREAS THAT WILL OBSTRUCT SIGHT LINES FOR STREETS AND DRIVEWAYS.
- ALL PROPOSED WATER MAIN AND SERVICES UNDER AND WITHIN 2' OF PAVEMENT OR SIDEWALK SHALL BE BACKFILLED WITH TRENCH BACKFILL WHICH SHALL BE CRUSHED STONE, GRADATION CA 6 OR CA 7.
- INSTALL NEW WATER MAIN WITH A MINIMUM OF 5' COVER BELOW EXISTING OR PROPOSED GROUND SURFACE UNLESS GREATER DEPTH IS REQUIRED TO AVOID EXISTING UTILITIES OR WHERE INDICATED ON THE DRAWINGS.
- PROVIDE COMPRESSION TYPE FIRE HYDRANTS WITH A 5/8-INCH MINIMUM SIZE MAIN VALVE ASSEMBLY, O-RING SEALS, TWO 2 1/2-INCH HOSE NOZZLES, AND A 4 1/2-INCH PUMPER NOZZLE WITH NATIONAL STANDARD THREADS, A NATIONAL STANDARD OPERATING NUT, AND AN ABOVE GROUND BREAK FLANGE. COLOR FOR HYDRANTS ON POTABLE DISTRIBUTION MAINS SHALL BE RED, HYDRANTS ON RAW WATER MAINS SHALL BE GREEN. COLOR FOR PRIVATE SYSTEM HYDRANTS SHALL BE YELLOW. ACCEPTABLE MANUFACTURERS ARE CLOW MEDALLION, EJ 5BR250, OR MUELLER CENTURION A423.
- PROVIDE A TEMPORARY COVERING OVER ALL NEW FIRE HYDRANTS UNTIL ALL NEW WATER MAINS ARE PUT INTO SERVICE AND NEW FIRE HYDRANTS ARE OPERABLE.
- GATE VALVES SHALL BE IN ACCORDANCE WITH AWWA C515 (DUCTILE IRON BODY), BRONZE FITTED, RESILIENT WEDGE AND SEAT TYPE WITH NON-RISING STEM AND O-RING PACKING. ALL INTERNAL AND EXTERNAL SURFACES SHALL HAVE A FUSION BONDED EPOXY COATING. ACCEPTABLE VALVE MANUFACTURERS ARE AMERICAN FLOW CONTROL, CLOW, AND EJ.
- BUTTERFLY VALVES SHALL BE IN ACCORDANCE WITH AWWA C504 FOR PRESSURE CLASS 150B, CAST IRON BODY, RUBBER-SEATED, TIGHT CLOSING TYPE SUITABLE FOR BURIED SERVICE. ACCEPTABLE VALVE MANUFACTURERS ARE AMERICAN FLOW CONTROL, CLOW, AND EJ.
- LOCATE PRESSURE CONNECTIONS, IF INDICATED ON THE DRAWINGS OR WHEN DIRECTED BY THE ENGINEER, A MINIMUM OF 2' FROM ANY EXISTING REPAIR SLEEVES OR PIPE JOINTS.
- THE CITY OF JOLIET WATER DEPARTMENT SHALL BE RESPONSIBLE FOR COMPLETING ALL TAPS TO EXISTING WATER MAINS. CONTRACTOR WILL BE RESPONSIBLE FOR CALLING 815-724-4230 TO SCHEDULE AN APPOINTMENT WITH THE CITY WATER DEPARTMENT. APPOINTMENTS ARE AVAILABLE ON TUESDAYS AND THURSDAYS.
- SUCCESSFULLY TEST, DISINFECT, AND FLUSH WATER MAIN, AND OBTAIN ACCEPTANCE OF THE WATER MAIN BY THE CITY OF JOLIET, PRIOR TO MAKING WATER SERVICE CONNECTIONS. FLUSH PIPELINES TO OBTAIN A VELOCITY OF 2.5 FT/S PER AWWA STANDARD C651.
- CITY OF JOLIET WILL ALLOW TESTING NEW WATER MAIN AGAINST EXISTING VALVES OR AGAINST A CAP WHERE A NEW VALVE IS NOT PRESENT.
- USE MECHANICAL JOINT FITTINGS TO PLUG/CAP EXISTING WATER MAINS TO REMAIN IN SERVICE AND FOR EXISTING WATER MAINS TO BE ABANDONED. PLUGS/CAPS ON WATER MAIN TO REMAIN IN SERVICE SHALL INCLUDE AN ADEQUATELY SIZED CAST-IN-PLACE CONCRETE THRUST BLOCK.
- AS-BUILT DRAWINGS SHALL BE PREPARED BY THE CONTRACTOR AND SUBMITTED TO THE ENGINEER AS SOON AS THE PROJECT IS COMPLETED. ANY CHANGE IN THE LENGTH, LOCATION, OR ALIGNMENT SHALL BE SHOWN IN RED.
- EROSION CONTROL WILL BE CONSTRUCTED IN ACCORDANCE WITH STANDARD SPECIFICATIONS FOR SOIL EROSION AND SEDIMENT CONTROL AS CONTAINED IN IEPA/WPC/87-012 OR CURRENT EDITION.
- REPLACE ALL CONCRETE SIDEWALKS DISTURBED BY CONSTRUCTION TO THE NEAREST CONSTRUCTION JOINT. A MAXIMUM LENGTH OF TEN LINEAL FEET PER CROSSING WILL BE UTILIZED FOR PAY QUANTITY CALCULATIONS.
- PAVEMENT RESTORATION WILL BE MEASURED IN PLACE AND THE AREA COMPUTED IN SQUARE YARDS. ALL AREAS DISTURBED WILL BE REPLACED, BUT THE MAXIMUM ALLOWABLE WIDTHS USED FOR PAY QUANTITY CALCULATIONS WILL BE 6 FEET CENTERED ON THE PIPE. IF THE CONTRACTOR RELOCATES THE TRENCH AWAY FROM THE CURB AND GUTTER, THE PAVEMENT PATCH WILL EXTEND FROM THE SAWCUT IN THE EXISTING PAVEMENT TO THE FACE OF THE GUTTER AND THE MAXIMUM ALLOWABLE WIDTH OF 6 FEET WILL BE USED FOR PAY QUANTITY CALCULATIONS.
 - CADDY LANE, FAIRLANE DRIVE, FAIRWAY DRIVE, INWOOD DRIVE, PUTTER COURT, STAR LANE, SWING COURT, AND WHITE BIRCH LANE SHALL HAVE 2.5 INCHES OF BINDER AND 1.5 INCHES OF SURFACE COURSE.
 - GLENWOOD AVENUE AND BARNEY DRIVE SHALL HAVE 10 INCHES OF BINDER AND 2 INCHES OF SURFACE COURSE.

- IT SHALL BE THE CONTRACTOR'S DUTY AND RESPONSIBILITY TO ASCERTAIN AND EXECUTE THE MEANS, METHODS, AND SEQUENCE OF CONSTRUCTION IN ACCORDANCE WITH THE DRAWINGS, SPECIFICATIONS, AND OTHER CONTRACT DOCUMENTS. THIS SHALL INCLUDE, BUT SHALL NOT BE LIMITED TO, THE EXCLUSIVE DUTY AND RESPONSIBILITY TO PROVIDE FOR WORKPLACE SAFETY AND WORKER SUPERVISION. IT SHALL EXCLUSIVELY BE THE CONTRACTOR'S DUTY AND RESPONSIBILITY TO INVESTIGATE AND ASCERTAIN THE CURRENT PHYSICAL STATE AND OPERATIONAL STATUS OF THE CITY'S WATER SUPPLY SYSTEM AND THE CITY'S SANITARY SEWER SYSTEM, INCLUDING WHETHER A WATER MAIN OR OTHER VESSEL IS OPERATIONAL, CONTAINS WATER, IS PRESSURIZED, OR IS OTHERWISE SAFE TO ALTER. ANY INFORMATION PROVIDED BY THE CITY, OR ITS EMPLOYEES AND CONSULTANTS, REGARDING THE STATE OF ITS WATER SUPPLY AND SANITARY SEWER SYSTEMS IS PROVIDED AS A COURTESY TO THE CONTRACTOR BUT IS NOT WARRANTED TO BE TRUE AND MAY NOT BE RELIED ON BY THE CONTRACTOR IN SATISFACTION OF, OR TO DIMINISH, ITS EXCLUSIVE DUTY TO ASCERTAIN AND EXECUTE THE MEANS, METHODS, AND SEQUENCES OF CONSTRUCTION IN ACCORDANCE WITH THE DRAWINGS, SPECIFICATIONS, AND OTHER CONTRACT DOCUMENTS AND ITS EXCLUSIVE RESPONSIBILITY TO PROVIDE FOR WORKPLACE SAFETY AND WORKER SUPERVISION.
- CONTRACTOR TO COMPLY WITH PROJECT MILESTONES AND REQUIREMENTS SPECIFIED IN SUPPLEMENTARY CONDITIONS AND SECTION 01 31 13.16
- CONTRACTOR TO DISTRIBUTE DOOR HANGERS AT VARIOUS MILESTONES DURING THE PROJECT. DOOR HANGERS WILL BE PROVIDED BY THE OWNER. DOOR HANGERS MUST BE DISTRIBUTED AT THE FOLLOWING MILESTONES:
 - ONE WEEK PRIOR TO THE START OF CONSTRUCTION.
 - 48 HOURS IN ADVANCE OF WATER MAIN SHUTDOWNS TO ALL AFFECTED STRUCTURES (THE SAME STRUCTURE MAY RECEIVE MORE THAN ONE DOOR HANGER).
 - 48 HOURS IN ADVANCE OF WATER SERVICE LINE REPLACEMENTS.
 - ONE WEEK PRIOR TO RESTORATION ACTIVITIES ON ANY STREET.
- CONTRACTOR SHALL COORDINATE WITH CITY ARBORIST IN AREAS WHERE THE WATER MAIN IS TO BE INSTALLED WITH TREE TUNNELING OR WHERE TREE REMOVAL IS NECESSARY FOR THE INSTALLATION OF THE WATER MAIN.

1

SUMMARY OF QUANTITIES

No.	PAY ITEM	UNIT	QUANTITY
1	PRECONSTRUCTION VIDEO RECORDING	LSUM	1
2	TRAFFIC CONTROL AND PROTECTION	LSUM	1
3	GRANULAR TRENCH BACKFILL	CUYD	10,300
4	WATER MAIN (OPEN CUT), 6-INCH	FOOT	233
5	WATER MAIN (OPEN CUT), 6-INCH DI	FOOT	1,190
6	WATER MAIN (OPEN CUT), 8-INCH	FOOT	7,958
7	WATER MAIN (OPEN CUT), 8-INCH DI	FOOT	76
8	WATER MAIN (OPEN CUT), 10-INCH	FOOT	460
9	WATER MAIN (OPEN CUT), 10-INCH DI	FOOT	227
10	WATER MAIN (OPEN CUT), 12-INCH	FOOT	803
11	WATER MAIN (OPEN CUT), 12-INCH DI	FOOT	242
12	WATER MAIN (OPEN CUT), 16-INCH DI	FOOT	3,977
13	WATER MAIN (IN JACKED CASING), 8-INCH IN 36-INCH CASING	FOOT	91
14	WATER MAIN (IN JACKED CASING), 12-INCH IN 36-INCH CASING	FOOT	76
15	CASING PIPE (TUNNELING UNDER SEWER), 20-INCH	FOOT	73
16	CASING PIPE (TUNNELING UNDER SEWER), 24-INCH	FOOT	74
17	CASING PIPE (TUNNELING UNDER SEWER), 30-INCH	FOOT	72
18	MISCELLANEOUS FITTINGS	POUND	16,000
19	CONNECT TO WATER MAIN (NON-PRESSURE), 6-INCH	EACH	5
20	CONNECT TO WATER MAIN (NON-PRESSURE), 8-INCH	EACH	2
21	CONNECT TO WATER MAIN (NON-PRESSURE), 10-INCH	EACH	4
22	CONNECT TO WATER MAIN (NON-PRESSURE), 12-INCH	EACH	3
23	CONNECT TO WATER MAIN (NON-PRESSURE), 16-INCH	EACH	3
24	GATE VALVE, 6-INCH	EACH	8
25	GATE VALVE, 8-INCH	EACH	24
26	GATE VALVE, 10-INCH	EACH	3
27	GATE VALVE, 12-INCH	EACH	3
28	BUTTERFLY VALVE, 16-INCH	EACH	9
29	VALVE BOX	EACH	5
30	VALVE VAULT, 4-FOOT DIAMETER	EACH	29
31	VALVE VAULT, 5-FOOT DIAMETER	EACH	13
32	VALVE VAULT (ADDITIONAL DEPTH), 4-FOOT DIAMETER	VFT	5
33	VALVE VAULT (ADDITIONAL DEPTH), 5-FOOT DIAMETER	VFT	3
34	FIRE HYDRANT	EACH	39
35	FIRE HYDRANT BARREL EXTENSION	VFT	5
36	LINE STOP, 6-INCH	EACH	2
37	LINE STOP, 8-INCH	EACH	1
38	LINE STOP, 10-INCH	EACH	1
39	LINE STOP, 12-INCH	EACH	1
40	LINE STOP, 16-INCH	EACH	3
41	SANITARY SEWER REMOVAL AND REPLACEMENT, 8-INCH	FOOT	43
42	STORM SEWER REMOVAL AND REPLACEMENT, 8-INCH	FOOT	40
43	STORM SEWER REMOVAL AND REPLACEMENT, 12-INCH	FOOT	7

44	ABANDONMENT OF EXISTING WATER MAINS AND APPURTENANCES	LSUM	1
45	WATER SERVICE CONNECTION TO WATER MAIN AND CURB STOP, 1-INCH	EACH	201
46	WATER SERVICE CONNECTION TO WATER MAIN AND CURB STOP, 1.5-INCH	EACH	2
47	WATER SERVICE CONNECTION TO WATER MAIN AND CURB STOP, 2-INCH	EACH	20
48	WATER SERVICE CONNECTION TO WATER MAIN AND CURB STOP, 3-INCH	EACH	1
49	WATER SERVICE LINE TYPE K - OPEN CUT, 1-INCH	FOOT	1,965
50	WATER SERVICE LINE TYPE K - OPEN CUT, 1.5-INCH	FOOT	25
51	WATER SERVICE LINE TYPE K - OPEN CUT, 2-INCH	FOOT	145
52	WATER SERVICE LINE TYPE K - OPEN CUT, 3-INCH	FOOT	20
53	WATER SERVICE LINE TYPE K - DIRECTIONAL DRILLING, 1-INCH	FOOT	4,415
54	WATER SERVICE LINE TYPE K - DIRECTIONAL DRILLING, 1.5-INCH	FOOT	150
55	WATER SERVICE LINE TYPE K - DIRECTIONAL DRILLING, 2-INCH	FOOT	1,175
56	WATER SERVICE CASING PIPE	FOOT	320
57	PROJECT MANAGEMENT	HOUR	21
58	UTILITY LOCATION - PRIVATE PROPERTY	EACH	7
59	LANDSCAPING PROJECT MANAGEMENT	HOUR	14
60	LANDSCAPING RESTORATION ALLOWANCE	EACH	7
61	SHRUB AND BRUSH DISPOSAL	EACH	14
62	FENCE TO BE REMOVED AND RE-ERECTED	FOOT	35
63	CRIMP WATER SERVICE	EACH	7
64	REMOVE AND REPLACE DRAIN TILES, 6-INCH THROUGH 12-INCH	FOOT	320
65	ADJUSTING SANITARY SEWER SERVICE LINE	EACH	63
66	EXPLORATORY EXCAVATION	EACH	22
67	INLET PROTECTION FILTER	EACH	100
68	RESTORATION OF LAWNS AND PARKWAYS	SQYD	2,800
69	TEMPORARY HOT-MIX ASPHALT PAVEMENT	SQYD	2,050
70	HOT-MIX ASPHALT REMOVAL AND REPLACEMENT, 2.5-INCH BINDER, 1.5-INCH SURFACE	SQYD	5,300
71	HOT-MIX ASPHALT REMOVAL AND REPLACEMENT, 10.5-INCH BINDER, 1.5-INCH SURFACE	SQYD	5,800
72	HOT-MIX ASPHALT DRIVEWAY REMOVAL AND REPLACEMENT, 3-INCH	SQYD	100
73	PCC DRIVEWAY REMOVAL AND REPLACEMENT, 6-INCH	SQYD	150
74	PCC DRIVEWAY REMOVAL AND REPLACEMENT, 8-INCH	SQYD	75
75	CONCRETE CURB AND GUTTER REMOVAL AND REPLACEMENT	FOOT	1,900
76	PCC SIDEWALK REMOVAL AND REPLACEMENT	SQFT	12,900
77	DETECTABLE WARNINGS	SQFT	30
78	PAVEMENT MARKING - LINE, 4-INCH (THERMOPLASTIC)	FOOT	550
79	PAVEMENT MARKING - LINE, 6-INCH (THERMOPLASTIC)	FOOT	3,730
80	PAVEMENT MARKING - LINE, 12-INCH (THERMOPLASTIC)	FOOT	570
81	PAVEMENT MARKING - LINE, 24-INCH (THERMOPLASTIC)	FOOT	220
82	DETECTOR LOOP REPLACEMENT	FOOT	200
83	REMOVAL AND REPLACEMENT OF SIGNS	EACH	10
84	TREE ROOT PRUNING	EACH	52
85	TREE TRIMMING	LSUM	1
86	DUST CONTROL	DAY	55
87	REMOVAL AND REPLACEMENT OF UNSUITABLE MATERIAL	CUYD	179
88	SOIL TESTS FOR CONTAMINANTS	EACH	8
89	CONTAMINATED WASTE DISPOSAL	CUYD	179

P:\JOLIO\221587-2024 WATER MAIN SURV\CAD\PARVIEW NORTH\01_CIVIL 3D\01_SHTS-PLANS\221587-PARVIEW NORTH_COVER_GEN_DET.SWG GENERAL NOTES AND SOO
 Plotted: 11/17/2023 11:35 AM By: RMUELLER
 Copyright © 2023, By: Baxter & Woodman, Inc.
 State of Illinois - Professional Design Firm
 License No. - 184-001121 - Expires 4-30-25



CONSULTANTS	REVISED - <u>1</u> ADDENDUM #1 11/09/23
	REVISED -
	REVISED -
	REVISED -

**CITY OF JOLIET, ILLINOIS
 PARKVIEW NORTH WATER MAIN IMPROVEMENTS
 CITY OF JOLIET CONTRACT NO. 2773-0124**

SCALE: AS NOTED

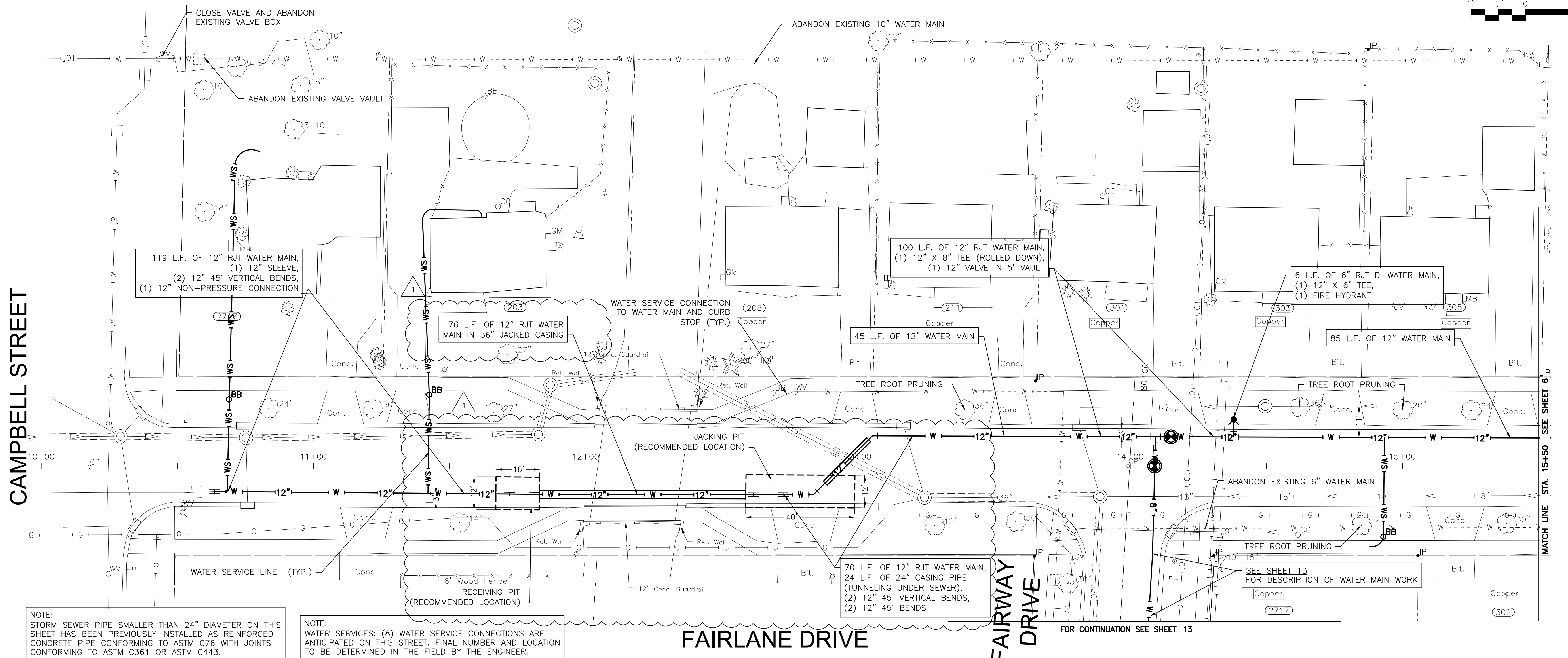
GENERAL NOTES AND SUMMARY OF QUANTITIES

PROJECT NO: 221587.40

DESIGNED - RMM	TOTAL SHEETS	SHEET NO.
DRAWN - JJS/ABN	39	4
CHECKED - LMS		
DATE - 10/19/2023		

**FINAL DESIGN
 FOR BIDDING**

P:\JOLIET\221587-2024 WATER MAIN SURV\CAD\PARVIEW NORTH\01_CIVIL_3D\01_SHTS-PLANS\221587-PARKVIEW NORTH_DESIGN_SHEETS.DWG 10+00.00
 Plotted: 11/17/2023 11:27 AM By: RMOELLER
 Copyright © 2023, By: Baxter & Woodman, Inc.
 State of Illinois - Professional Design Firm
 License No. - 184-001121 - Expires 4-30-25

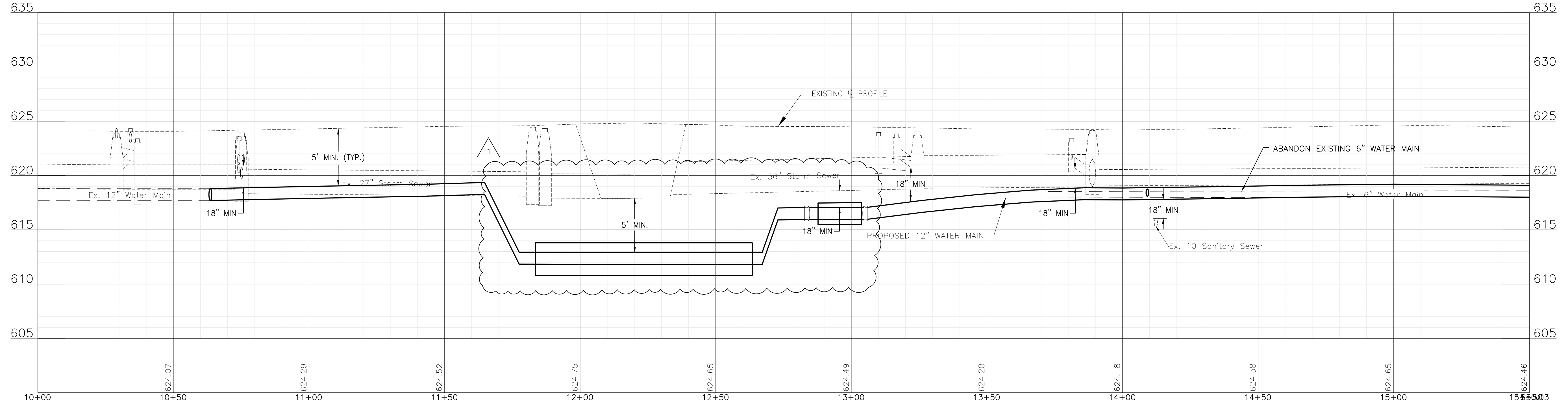


NOTE:
 STORM SEWER PIPE SMALLER THAN 24" DIAMETER ON THIS SHEET HAS BEEN PREVIOUSLY INSTALLED AS REINFORCED CONCRETE PIPE CONFORMING TO ASTM C76 WITH JOINTS CONFORMING TO ASTM C361 OR ASTM C443.

NOTE:
 WATER SERVICES: (8) WATER SERVICE CONNECTIONS ARE ANTICIPATED ON THIS STREET. FINAL NUMBER AND LOCATION TO BE DETERMINED IN THE FIELD BY THE ENGINEER.

FAIRLANE DRIVE

FOR CONTINUATION SEE SHEET 13



CONSULTANTS	REVISED - ADDENDUM #1 11/09/23
	REVISED -
	REVISED -
	REVISED -

CITY OF JOLIET, ILLINOIS
PARKVIEW NORTH WATER MAIN IMPROVEMENTS
CITY OF JOLIET CONTRACT NO. 2773-0124

FAIRLANE DRIVE STA. 10+00 TO STA. 15+00 PLAN AND PROFILE

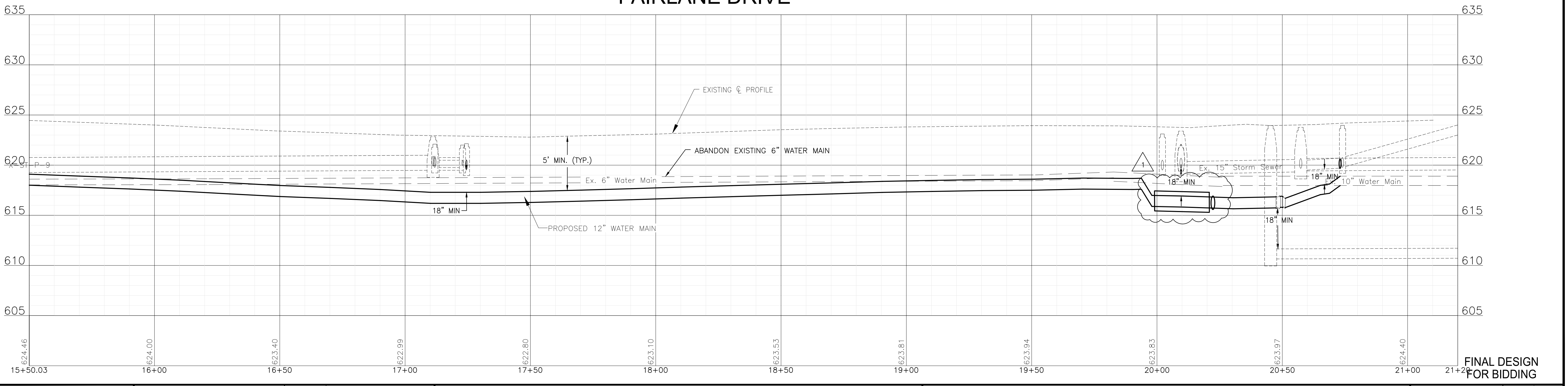
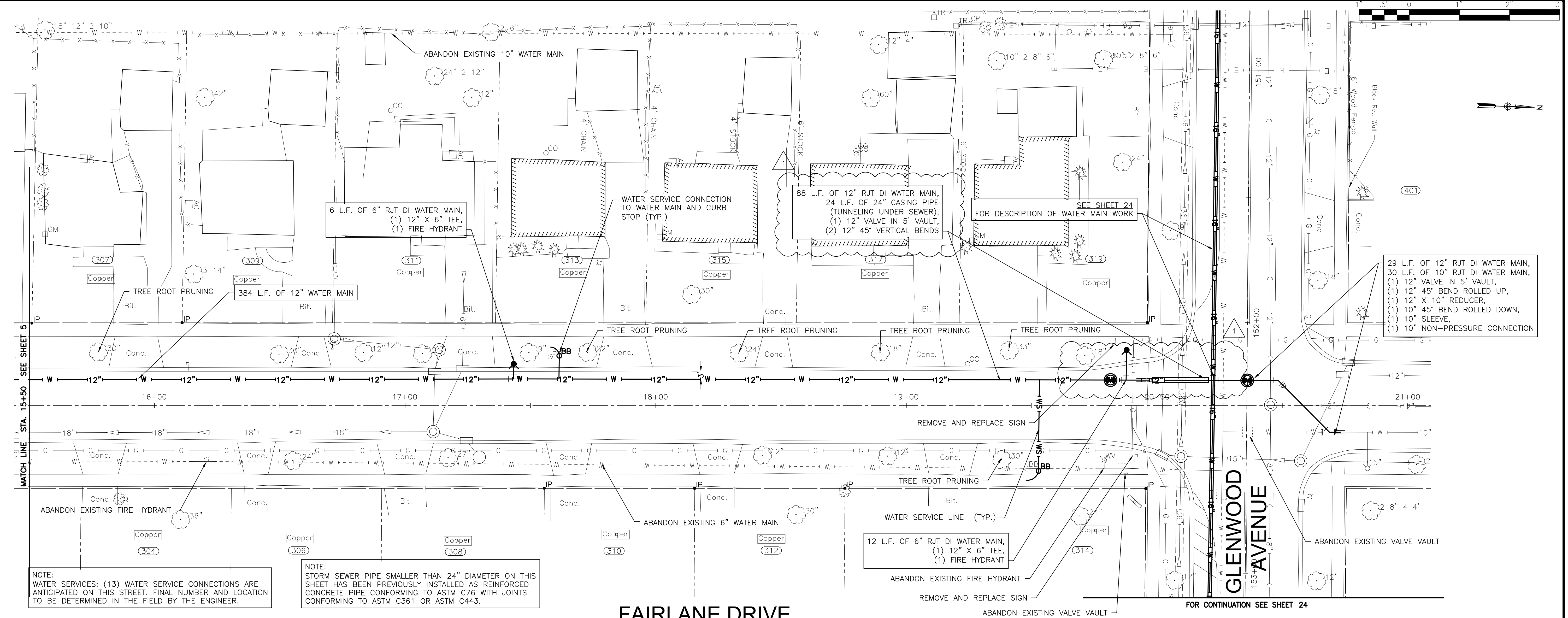
SCALE: HORIZ 1"=20' / VERT 1"=5'

PROJECT NO: 221587.40

DESIGNED - RMM	TOTAL SHEETS	SHEET NO.
DRAWN - JJS/ABN	39	5
CHECKED - LMS		
DATE - 10/19/2023		

FINAL DESIGN FOR BIDDING

P:\JOLI\221587-2024 WATER MAIN SURV\CAD\PARVIEW NORTH\01_CIVIL_3D\01_SHTS-PLANS-221587-PARKVIEW NORTH_DESIGN_SHEETS.DWG 15+50
 Plotted: 11/17/2023 11:28 AM By: RMOELLER
 Copyright © 2023, By: Baxter & Woodman, Inc.
 State of Illinois - Professional Design Firm
 License No. - 184-001121 - Expires 4-30-25



CONSULTANTS	REVISED - ADDENDUM #1 11/09/23
	REVISED -
	REVISED -
	REVISED -

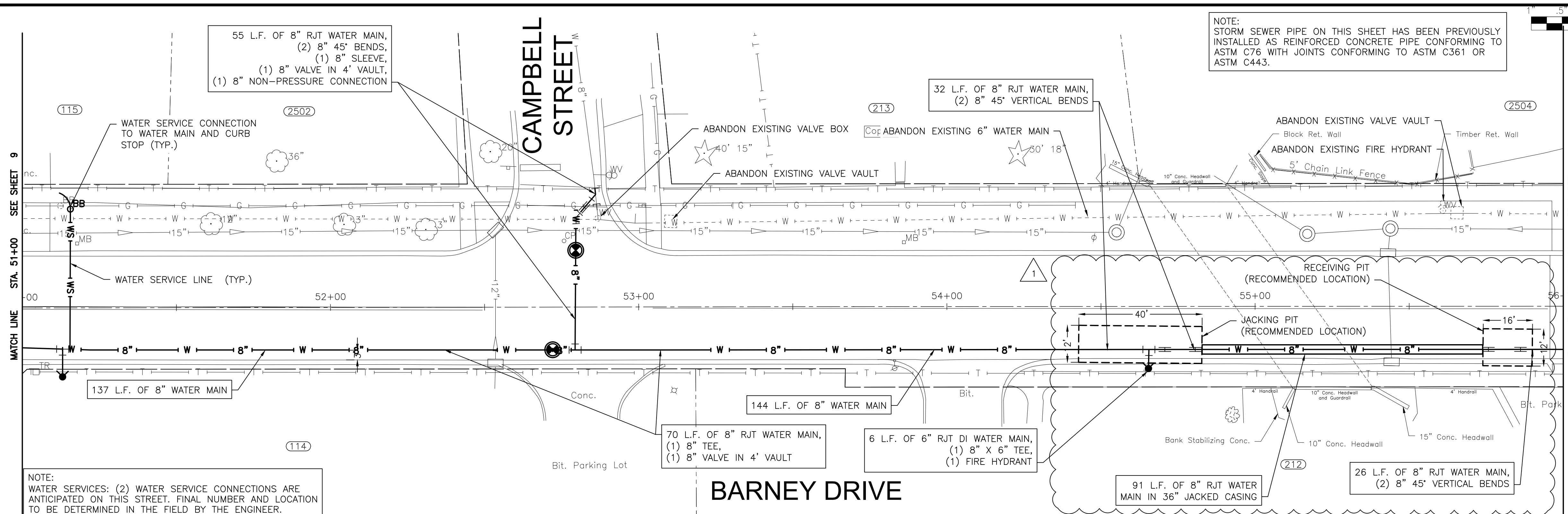
CITY OF JOLIET, ILLINOIS
PARKVIEW NORTH WATER MAIN IMPROVEMENTS
CITY OF JOLIET CONTRACT NO. 2773-0124

FAIRLANE DRIVE STA. 15+50 TO STA. 21+50 PLAN AND PROFILE

SCALE: HORIZ 1"=20' / VERT 1"=5'
 PROJECT NO: 221587.40

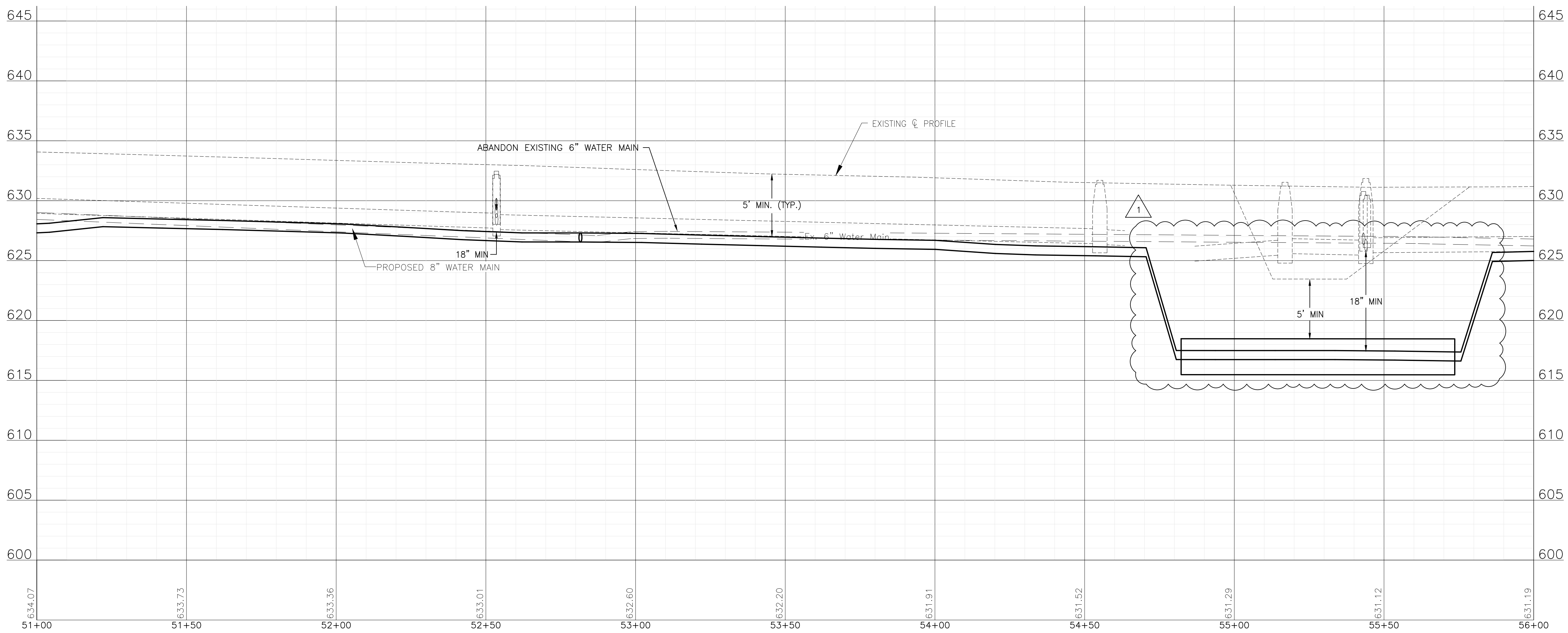
DESIGNED - RMM	TOTAL SHEETS	SHEET NO.
DRAWN - JJS/ABN	39	6
CHECKED - LMS		
DATE - 10/19/2023		

FINAL DESIGN FOR BIDDING



NOTE:
STORM SEWER PIPE ON THIS SHEET HAS BEEN PREVIOUSLY
INSTALLED AS REINFORCED CONCRETE PIPE CONFORMING TO
ASTM C76 WITH JOINTS CONFORMING TO ASTM C361 OR
ASTM C443.

NOTE:
WATER SERVICES: (2) WATER SERVICE CONNECTIONS ARE
ANTICIPATED ON THIS STREET. FINAL NUMBER AND LOCATION
TO BE DETERMINED IN THE FIELD BY THE ENGINEER.



P:\JOLI\221587-2024 WATER MAIN SURV\CAD\PARVIEW NORTH\01_CIVIL_3D\01_SHTS-PLANS\221587-PARKVIEW NORTH_DESIGN_SHEETS.DWG 51+00.00
Plotted: 11/8/2023 1:21 PM By: RWOELLER
Copyright © 2023, By: Baxter & Woodman, Inc.
State of Illinois - Professional Design Firm
License No. - 184-001121 - Expires 4-30-25



CONSULTANTS	REVISED - ADDENDUM #1 11/09/23
	REVISED -
	REVISED -
	REVISED -

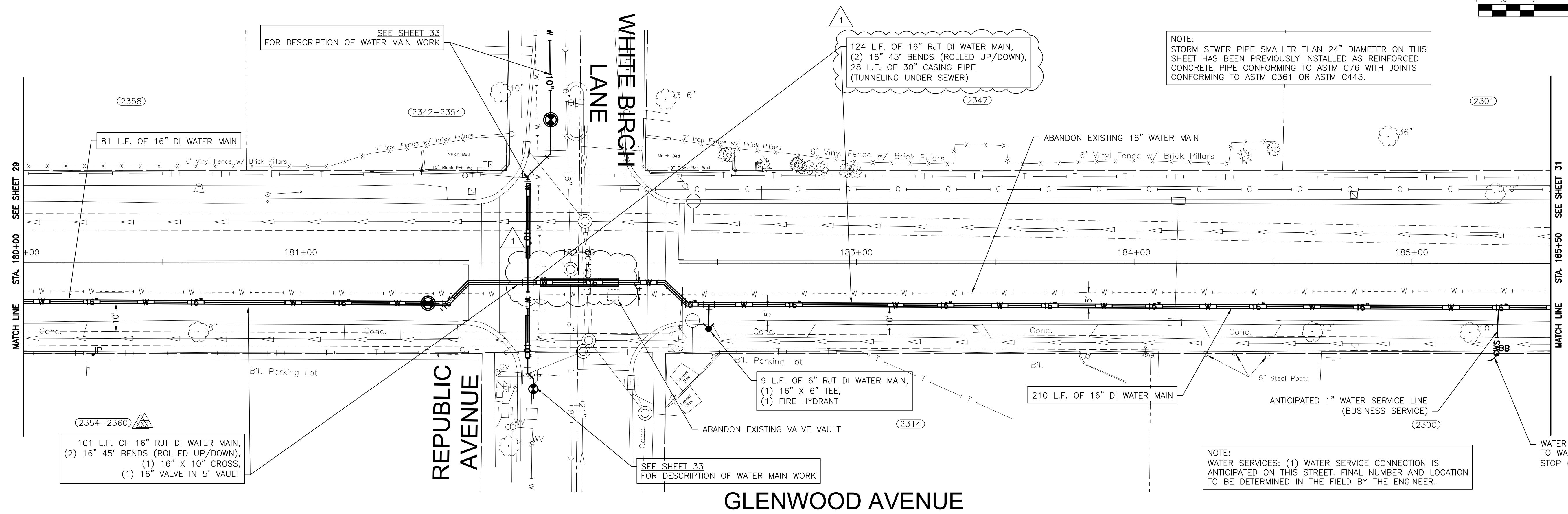
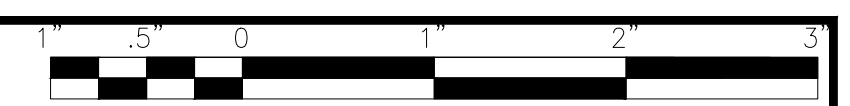
**CITY OF JOLIET, ILLINOIS
PARKVIEW NORTH WATER MAIN IMPROVEMENTS
CITY OF JOLIET CONTRACT NO. 2773-0124**

BARNEY DRIVE STA. 51+00 TO STA. 56+00 PLAN AND PROFILE

SCALE: HORIZ 1"=20' / VERT 1"=5'
PROJECT NO: 221587.40

DESIGNED - RMM	TOTAL SHEETS	SHEET NO.
DRAWN - JJS/ABN	39	10
CHECKED - LMS		
DATE - 10/19/2023		

FINAL DESIGN
FOR BIDDING



NOTE:
STORM SEWER PIPE SMALLER THAN 24\"/>

124 L.F. OF 16\"/>

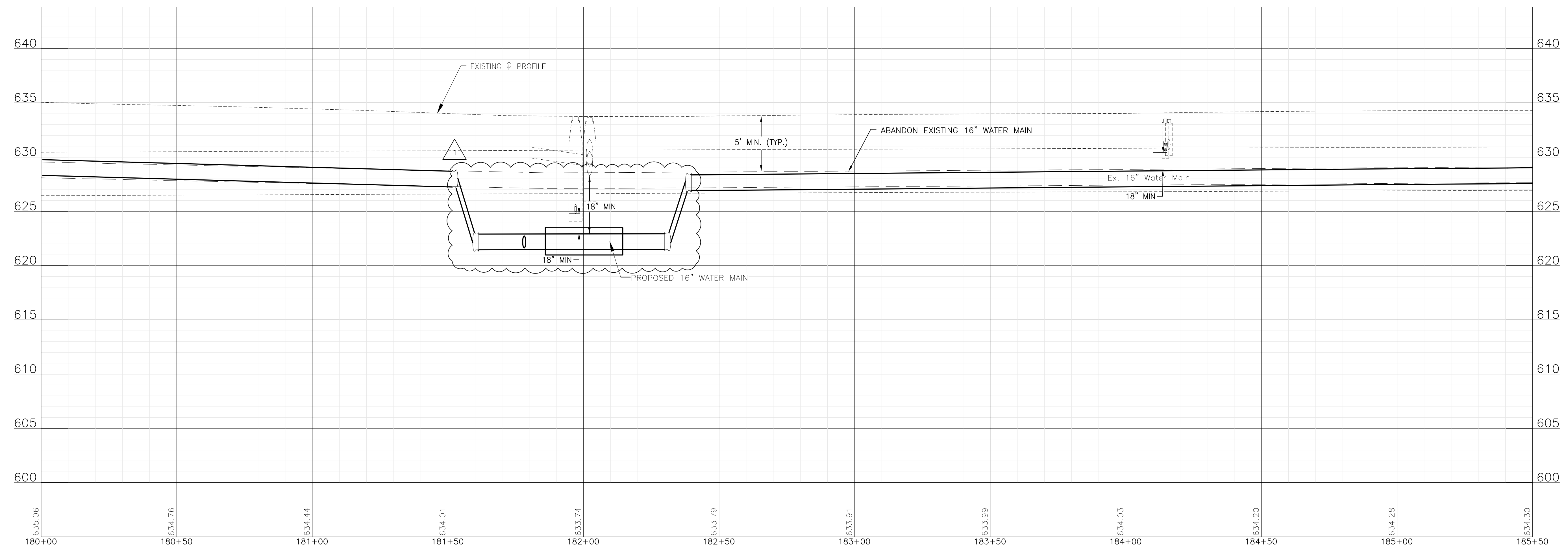
101 L.F. OF 16\"/>

9 L.F. OF 6\"/>

210 L.F. OF 16\"/>

NOTE:
WATER SERVICES: (1) WATER SERVICE CONNECTION IS ANTICIPATED ON THIS STREET. FINAL NUMBER AND LOCATION TO BE DETERMINED IN THE FIELD BY THE ENGINEER.

WATER SERVICE CONNECTION TO WATER MAIN AND CURB STOP (TYP.)



P:\JOL\221587-2024 WATER MAIN SURV\CAD\PARVIEW NORTH\01_CIVIL_3D\01_SHTS-PLANS-221587-PARKVIEW NORTH_DESIGN_SHEETS.DWG 180+00.00
 Plotted: 11/8/2023 1:22 PM By: RWOELLER
 Copyright © 2023, By: Baxter & Woodman, Inc.
 State of Illinois - Professional Design Firm
 License No. - 184-001121 - Expires 4-30-25



CONSULTANTS	REVISED - ADDENDUM #1 11/09/23
	REVISED -
	REVISED -
	REVISED -

CITY OF JOLIET, ILLINOIS
PARKVIEW NORTH WATER MAIN IMPROVEMENTS
CITY OF JOLIET CONTRACT NO. 2773-0124

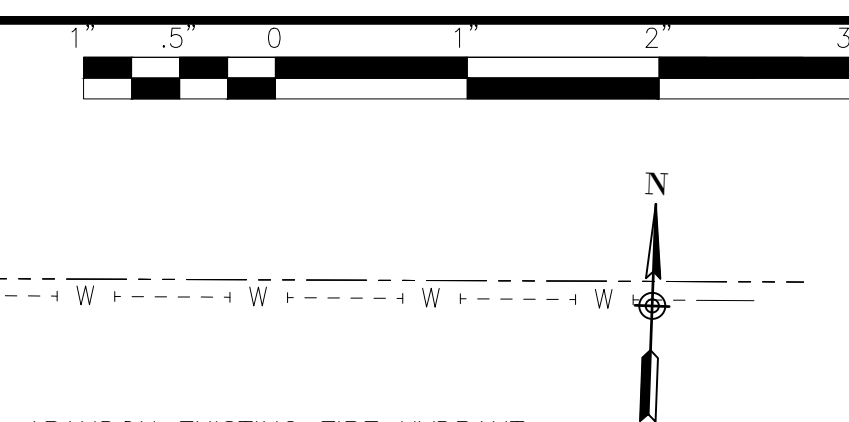
GLENWOOD AVENUE STA. 180+00 TO STA. 185+50 PLAN AND PROFILE

SCALE: HORIZ 1"=20' / VERT 1"=5'

PROJECT NO: 221587.40

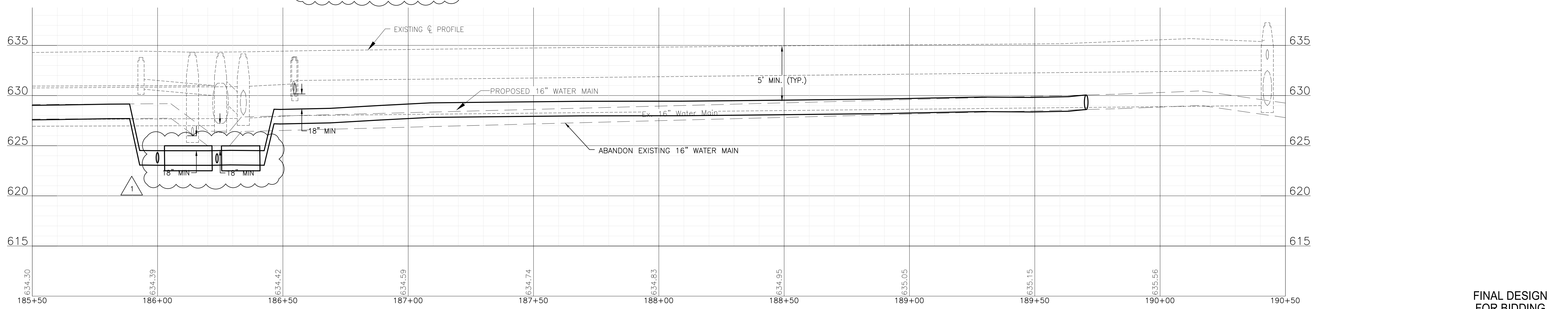
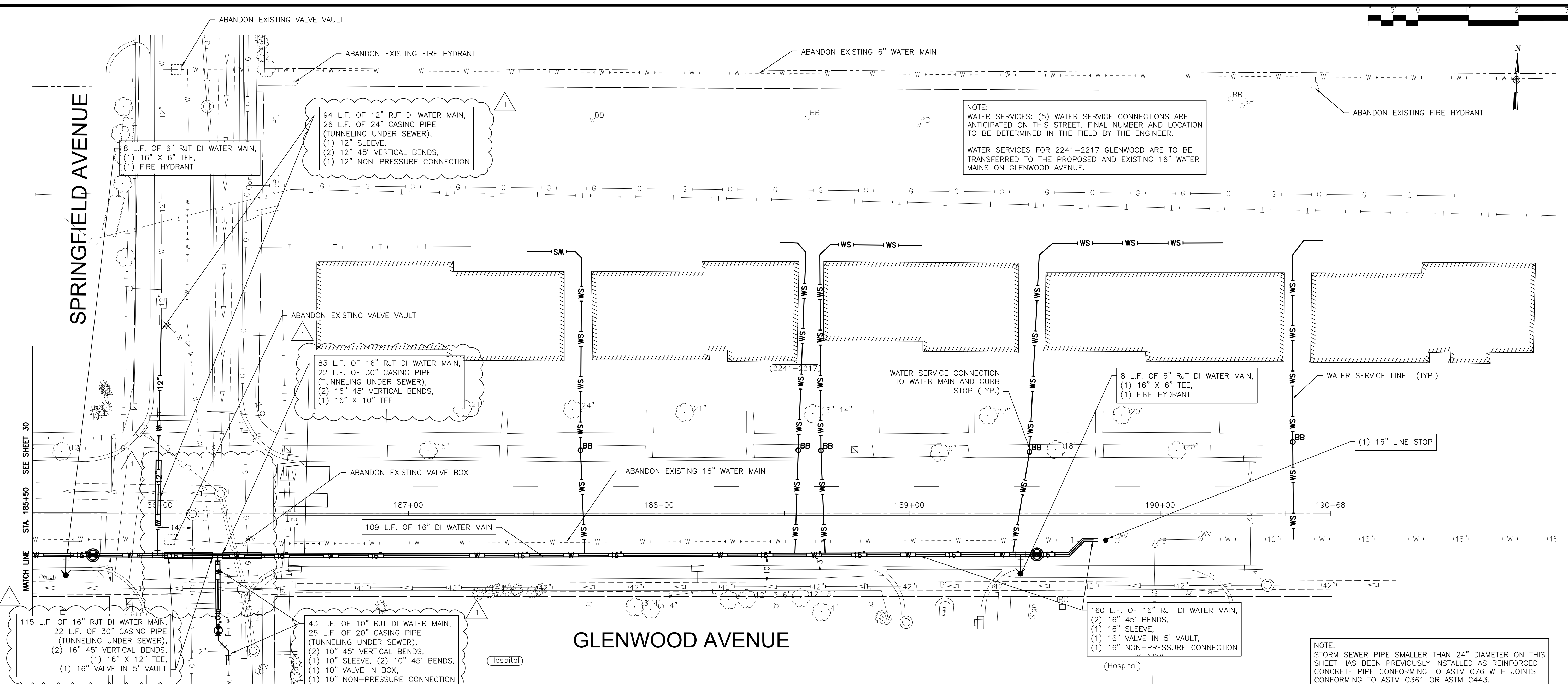
DESIGNED - RMM	TOTAL SHEETS	39
DRAWN - JJS/ABN	SHEET NO.	30
CHECKED - LMS		
DATE - 10/19/2023		

FINAL DESIGN FOR BIDDING



SPRINGFIELD AVENUE

NOTE:
 WATER SERVICES: (5) WATER SERVICE CONNECTIONS ARE ANTICIPATED ON THIS STREET. FINAL NUMBER AND LOCATION TO BE DETERMINED IN THE FIELD BY THE ENGINEER.
 WATER SERVICES FOR 2241-2217 GLENWOOD ARE TO BE TRANSFERRED TO THE PROPOSED AND EXISTING 16" WATER MAINS ON GLENWOOD AVENUE.



NOTE:
 STORM SEWER PIPE SMALLER THAN 24" DIAMETER ON THIS SHEET HAS BEEN PREVIOUSLY INSTALLED AS REINFORCED CONCRETE PIPE CONFORMING TO ASTM C76 WITH JOINTS CONFORMING TO ASTM C361 OR ASTM C443.

P:\JOL\221587-2024 WATER MAIN SURV\CAD\PARVIEW NORTH\01_CIVIL_3D\01_SHTS-PLANS\221587-PARKVIEW NORTH_DESIGN_SHEETS.DWG 185+50.00
 Plotted: 11/17/2023 11:26 AM By: RMOELLER
 Copyright © 2023, By: Baxter & Woodman, Inc.
 State of Illinois - Professional Design Firm
 License No. - 184-001121 - Expires 4-30-25



CONSULTANTS	REVISED - ADDENDUM #1 11/09/23
	REVISED -
	REVISED -
	REVISED -

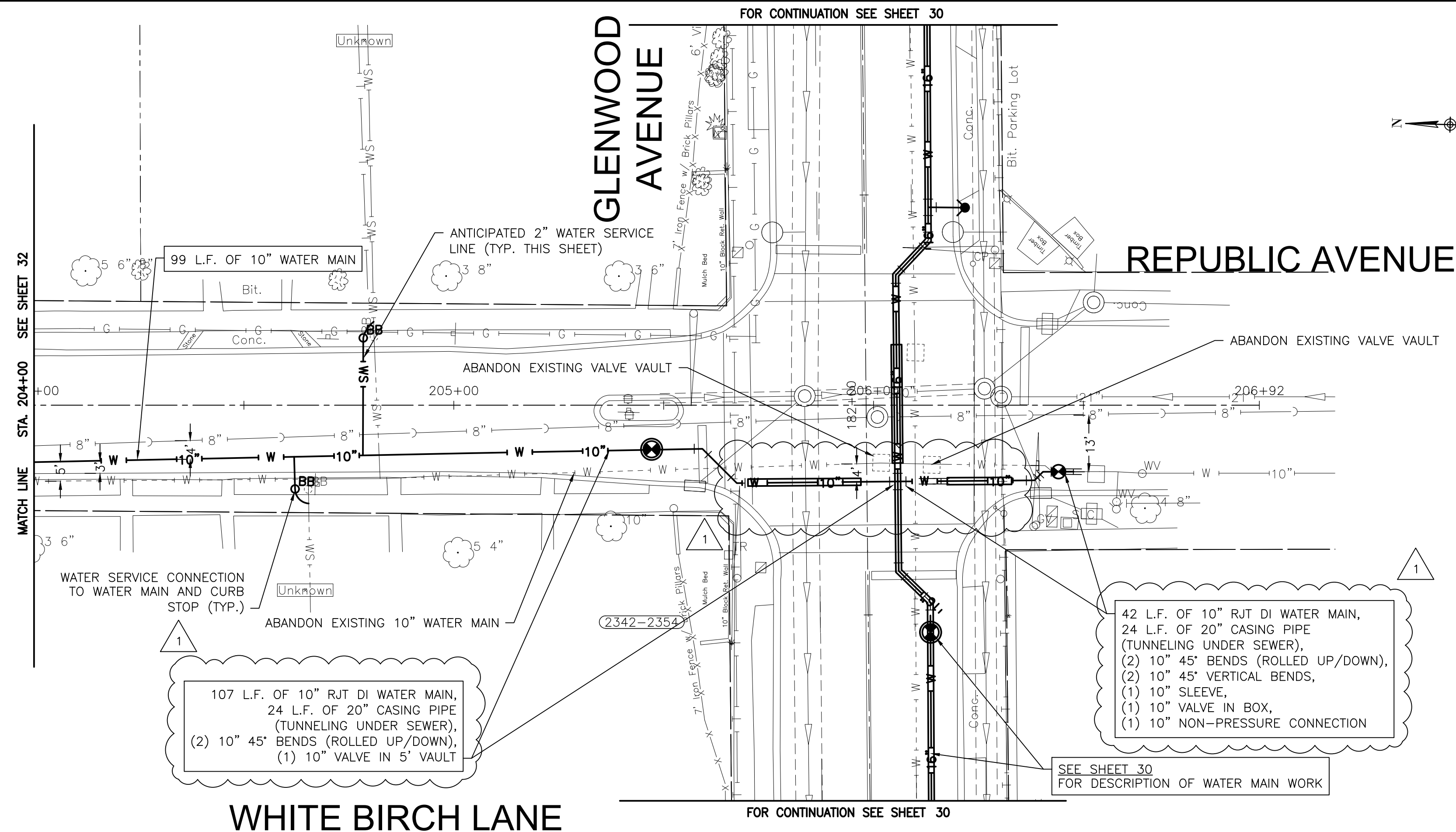
CITY OF JOLIET, ILLINOIS
PARKVIEW NORTH WATER MAIN IMPROVEMENTS
CITY OF JOLIET CONTRACT NO. 2773-0124

GLENWOOD AVENUE STA. 185+50 TO STA. 195+50 PLAN AND PROFILE
 SCALE: HORIZ 1"=20' / VERT 1"=5'
 PROJECT NO: 221587.40

DESIGNED - RMM	TOTAL SHEETS	SHEET NO.
DRAWN - JJS/ABN	39	31
CHECKED - LMS		
DATE - 10/19/2023		

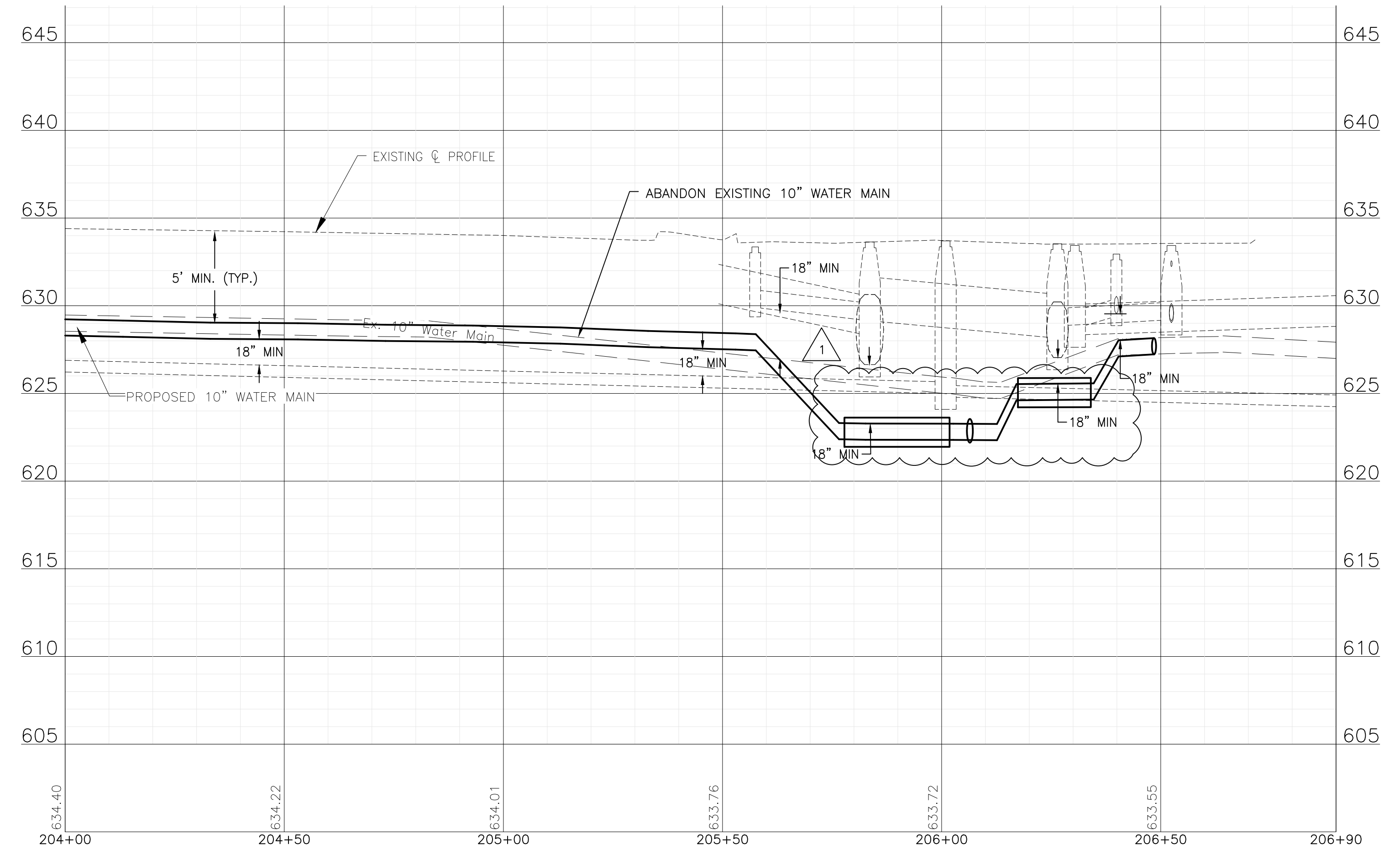
FINAL DESIGN FOR BIDDING

P:\JOL\221587-2024 WATER MAIN SURV\CAD\PARVIEW NORTH\01_CIVIL_3D\01_SHTS-PLANS\221587-PARKVIEW NORTH_DESIGN_SHEETS.DWG 204+00.00
 Plotted: 11/17/2023 11:25 AM By: RMOELLER
 Copyright © 2023, By: Baxter & Woodman, Inc.
 State of Illinois - Professional Design Firm
 License No. - 184-001121 - Expires 4-30-25



NOTE:
 WATER SERVICES: (2) WATER SERVICE CONNECTIONS ARE ANTICIPATED ON THIS STREET. FINAL NUMBER AND LOCATION TO BE DETERMINED IN THE FIELD BY THE ENGINEER.

NOTE:
 STORM SEWER PIPE SMALLER THAN 24" DIAMETER ON THIS SHEET HAS BEEN PREVIOUSLY INSTALLED AS REINFORCED CONCRETE PIPE CONFORMING TO ASTM C76 WITH JOINTS CONFORMING TO ASTM C361 OR ASTM C443.



CONSULTANTS	REVISED - <input checked="" type="checkbox"/> ADDENDUM #1 11/09/23
	REVISED -
	REVISED -
	REVISED -

CITY OF JOLIET, ILLINOIS
PARKVIEW NORTH WATER MAIN IMPROVEMENTS
CITY OF JOLIET CONTRACT NO. 2773-0124

WHITE BIRCH LANE STA. 204+00 TO STA. 208+00 PLAN AND PROFILE

SCALE: HORIZ 1"=20' / VERT 1"=5'
 PROJECT NO: 221587.40

DESIGNED - RMM	TOTAL SHEETS	SHEET NO.
DRAWN - JJS/ABN	39	33
CHECKED - LMS		
DATE - 10/19/2023		

FINAL DESIGN FOR BIDDING

00 41 00.41

BID FORM

ONE ORIGINAL BID SHALL BE SUBMITTED

To: City of Joliet
Mayor and City Council
150 W. Jefferson Street
Joliet, IL 60432
(hereinafter called Owner)

From: _____
Company

Address

City State Zip Code

() _____
Telephone

E-MAIL

(hereinafter called Bidder)

1. The undersigned Bidder proposes and agrees, if this Bid is accepted, to enter into an Agreement with Owner in the form included in the Bidding Documents to furnish all labor, materials, tools, and services required for the construction of the Parkview North Water Main Improvements for the City of Joliet, Will County, Illinois (Engineers' Job No. 221587.40), all in accordance with the Bidding Documents prepared by Baxter & Woodman, Inc., Consulting Engineers.
2. Bidder accepts all of the terms and conditions of the Advertisement for Bids and Bidder Instructions, including without limitation those dealing with the disposition of Bid Security. This Bid will remain open for 120 days after the date of Bid opening or for such longer period of time that Bidder may agree to in writing upon request of Owner. Bidder will sign and submit the Agreement with the Bonds and other documents required by the Bidding Documents within 10 days after the date of Owner's Notice of Award.
3. In submitting this Bid, Bidder represents, as set forth in the Agreement, that:
 - a. Bidder has examined copies of all the Bidding Documents.

BID FORM

00 41 00.41-1 (221587.40) IEPA-PWSLP Revision dated November 9, 2023

- b. Bidder is familiar with the nature and extent of the Bidding Documents, Work, site, locality, and all local conditions and legal and regulatory requirements that in any manner may affect cost, progress, performance, or furnishing of the Work, and has made such independent investigations as Bidder deems necessary.
- c. Bidder has obtained and carefully studied (or assumes responsibility for having done so) all additional or supplementary examinations, investigations, explorations, tests, studies and data concerning conditions (surface, subsurface and Underground Facilities) at or contiguous to the Site which may affect cost, progress, or performance of the Work or which relate to any aspect of the means, methods, techniques, sequences, and procedures of construction to be employed by Bidder, including applying the specific means, methods, techniques, sequences, and procedures of construction expressly required by the Bidding Documents to be employed by Bidder, and safety precautions and programs incident thereto.
- d. Bidder does not consider that any further examinations, investigations, explorations, tests, studies, or data are necessary for the determination of this Bid for performance of the Work at the price(s) bid and within the times and in accordance with the other terms and conditions of the Bidding Documents.
- e. Bidder is aware of the general nature of work to be performed by Owner and others at the Site that relates to the Work as indicated in the Bidding Documents.
- f. Bidder has correlated the information known to Bidder, information and observations obtained from visits to the Site, reports and drawings identified in the Bidding Documents, and all additional examinations, investigations, explorations, tests, studies, and data with the Bidding Documents.
- g. Bidder has given Engineer written notice of all conflicts, errors, ambiguities, or discrepancies that Bidder has discovered in the Bidding Documents, and the written resolution thereof by Engineer is acceptable to Bidder.
- h. The Bidding Documents are generally sufficient to indicate and convey understanding of all terms and conditions for the Work for which this Bid is submitted.
- i. This Bid is genuine and not made in the interest or on behalf of any undisclosed person, firm or corporation, and is not submitted in conformity with any agreement or rules of any group, association, organization, or corporation; Bidder has not directly or indirectly induced or solicited any other Bidder to submit a false or sham Bid; Bidder has not solicited or induced any person, firm, or a corporation to refrain from bidding; and Bidder has not sought by collusion to obtain for itself any advantage over any other Bidder or over Owner.

BID FORM

- j. Bidder is not barred from contracting with the Owner as a result of a violation 720 ILCS 5/33 et seq.
 - k. Bidder agrees that no less than the prevailing rate of wages under the Davis-Bacon Wage Act (40 USC 276a through 276a-5) as determined by the U.S. Department of Labor shall be paid to all laborers, workmen and mechanics performing work under this contract.
 - l. Bidder agrees to cooperate with all Davis-Bacon Wage Act compliance activities including employee interviews by Owner.
 - m. Bidder complies with the provisions of the Employment of Illinois Workers on Public Works Act (30 ILCS 570/) as they may apply to this Project.
 - n. Bidder will comply with the requirements of Sections 22.51(f)(2)(B) and 22.51a(d)(2)(B) of the Illinois Environmental Protection Act ([415 ILCS5/22.51(f)(2)(B)] and [415 ILCS5/22.51a(d)(2)(B)]) for the disposal of uncontaminated soils including uncontaminated soil mixed with other clean construction or demolition debris (CCDD) materials and has included any costs associated with compliance in the Bid.
4. Bidder submits the following Schedule of Unit Prices for the Work to be performed in accordance with the Bidding Documents and agrees that items of work not specifically mentioned in the Schedule which are necessary and required to complete the Work intended shall be done incidental to and as part of the items of work for which a unit price is given, and understands that no additional payment will be made for such incidental work.

Bidder agrees that the Owner may select any one or more Parts of this Bid, and if awarded the Contract for such Part or Parts of this Bid, the Bidder agrees to perform and complete the work at the Contract Unit Prices submitted herein.

SCHEDULE OF UNIT PRICES					
NO.	PAY ITEM	APPROX. QUANTITY	UNIT	UNIT PRICE	TOTAL FOR ITEM
1	PRECONSTRUCTION VIDEO RECORDING	1	LSUM	Lump Sum	\$
2	TRAFFIC CONTROL AND PROTECTION	1	LSUM	Lump Sum	\$
3	GRANULAR TRENCH BACKFILL	10,300	CUYD	\$	\$
4	WATER MAIN (OPEN CUT), 6-INCH	233	FOOT	\$	\$

5	WATER MAIN (OPEN CUT), 6-INCH DI	1,190	FOOT	\$	\$
6	WATER MAIN (OPEN CUT), 8-INCH	7,958	FOOT	\$	\$
7	WATER MAIN (OPEN CUT), 8-INCH DI	76	FOOT	\$	\$
8	WATER MAIN (OPEN CUT), 10-INCH	460	FOOT	\$	\$
9	WATER MAIN (OPEN CUT), 10-INCH DI	227	FOOT	\$	\$
10	WATER MAIN (OPEN CUT), 12-INCH	803	FOOT	\$	\$
11	WATER MAIN (OPEN CUT), 12-INCH DI	242	FOOT	\$	\$
12	WATER MAIN (OPEN CUT), 16-INCH DI	3,977	FOOT	\$	\$
13	WATER MAIN (IN JACKED CASING), 8-INCH IN 36-INCH CASING	91	FOOT	\$	\$
14	WATER MAIN (IN JACKED CASING), 12-INCH IN 36-INCH CASING	76	FOOT	\$	\$
15	CASING PIPE (TUNNELING UNDER SEWER), 20-INCH	73	FOOT	\$	\$
16	CASING PIPE (TUNNELING UNDER SEWER), 24-INCH	74	FOOT	\$	\$
17	CASING PIPE (TUNNELING UNDER SEWER), 30-INCH	72	FOOT	\$	\$
18	MISCELLANEOUS FITTINGS	16,000	POUND	\$	\$
19	CONNECT TO WATER MAIN (NON-PRESSURE), 6-INCH	5	EACH	\$	\$
20	CONNECT TO WATER MAIN (NON-PRESSURE), 8-INCH	2	EACH	\$	\$
21	CONNECT TO WATER MAIN (NON-PRESSURE), 10-INCH	4	EACH	\$	\$
22	CONNECT TO WATER MAIN (NON-PRESSURE), 12-INCH	3	EACH	\$	\$
23	CONNECT TO WATER MAIN (NON-PRESSURE), 16-INCH	3	EACH	\$	\$
24	GATE VALVE, 6-INCH	8	EACH	\$	\$

BID FORM

00 41 00.41-4 (221587.40) IEPA-PWSLP Revision dated November 9, 2023

25	GATE VALVE, 8-INCH	24	EACH	\$	\$
26	GATE VALVE, 10-INCH	3	EACH	\$	\$
27	GATE VALVE, 12-INCH	3	EACH	\$	\$
28	BUTTERFLY VALVE, 16-INCH	9	EACH	\$	\$
29	VALVE BOX	5	EACH	\$	\$
30	VALVE VAULT, 4-FOOT DIAMETER	29	EACH	\$	\$
31	VALVE VAULT, 5-FOOT DIAMETER	13	EACH	\$	\$
32	VALVE VAULT (ADDITIONAL DEPTH), 4-FOOT DIAMETER	5	VFT	\$	\$
33	VALVE VAULT (ADDITIONAL DEPTH), 5-FOOT DIAMETER	3	VFT	\$	\$
34	FIRE HYDRANT	39	EACH	\$	\$
35	FIRE HYDRANT BARREL EXTENSION	5	VFT	\$	\$
36	LINE STOP, 6-INCH	2	EACH	\$	\$
37	LINE STOP, 8-INCH	1	EACH	\$	\$
38	LINE STOP, 10-INCH	1	EACH	\$	\$
39	LINE STOP, 12-INCH	1	EACH	\$	\$
40	LINE STOP, 16-INCH	3	EACH	\$	\$
41	SANITARY SEWER REMOVAL AND REPLACEMENT, 8-INCH	43	FOOT	\$	\$
42	STORM SEWER REMOVAL AND REPLACEMENT, 8-INCH	40	FOOT	\$	\$
43	STORM SEWER REMOVAL AND REPLACEMENT, 12-INCH	7	FOOT	\$	\$
44	ABANDONMENT OF EXISTING WATER MAINS AND APPURTENANCES	1	LSUM	Lump Sum	\$

BID FORM

00 41 00.41-5 (221587.40) IEPA-PWSLP Revision dated November 9, 2023

45	WATER SERVICE CONNECTION TO WATER MAIN AND CURB STOP, 1-INCH	201	EACH	\$	\$
46	WATER SERVICE CONNECTION TO WATER MAIN AND CURB STOP, 1.5-INCH	2	EACH	\$	\$
47	WATER SERVICE CONNECTION TO WATER MAIN AND CURB STOP, 2-INCH	20	EACH	\$	\$
48	WATER SERVICE CONNECTION TO WATER MAIN AND CURB STOP, 3-INCH	1	EACH	\$	\$
49	WATER SERVICE LINE TYPE K - OPEN CUT, 1-INCH	1,965	FOOT	\$	\$
50	WATER SERVICE LINE TYPE K - OPEN CUT, 1.5-INCH	25	FOOT	\$	\$
51	WATER SERVICE LINE TYPE K - OPEN CUT, 2-INCH	145	FOOT	\$	\$
52	WATER SERVICE LINE TYPE K - OPEN CUT, 3-INCH	20	FOOT	\$	\$
53	WATER SERVICE LINE TYPE K - DIRECTIONAL DRILLING, 1-INCH	4,415	FOOT	\$	\$
54	WATER SERVICE LINE TYPE K - DIRECTIONAL DRILLING, 1.5-INCH	150	FOOT	\$	\$
55	WATER SERVICE LINE TYPE K - DIRECTIONAL DRILLING, 2-INCH	1,175	FOOT	\$	\$
56	WATER SERVICE CASING PIPE	320	FOOT	\$	\$
57	PROJECT MANAGEMENT	21	HOUR	\$	\$
58	UTILITY LOCATION - PRIVATE PROPERTY	7	EACH	\$	\$
59	LANDSCAPING PROJECT MANAGEMENT	14	HOUR	\$	\$
60	LANDSCAPING RESTORATION ALLOWANCE	7	EACH	\$ 450.00	\$
61	SHRUB AND BRUSH DISPOSAL	14	EACH	\$	\$
62	FENCE TO BE REMOVED AND RE-ERECTED	35	FOOT	\$	\$
63	CRIMP WATER SERVICE	7	EACH	\$	\$

BID FORM

00 41 00.41-6 (221587.40) IEPA-PWSLP Revision dated November 9, 2023

64	REMOVE AND REPLACE DRAIN TILES, 6-INCH THROUGH 12-INCH	320	FOOT	\$	\$
65	ADJUSTING SANITARY SEWER SERVICE LINE	63	EACH	\$	\$
66	EXPLORATORY EXCAVATION	22	EACH	\$	\$
67	INLET PROTECTION FILTER	100	EACH	\$	\$
68	RESTORATION OF LAWNS AND PARKWAYS	2,800	SQYD	\$	\$
69	TEMPORARY HOT-MIX ASPHALT PAVEMENT	2,050	SQYD	\$	\$
70	HOT-MIX ASPHALT REMOVAL AND REPLACEMENT, 2.5-INCH BINDER, 1.5-INCH SURFACE	5,300	SQYD	\$	\$
71	HOT-MIX ASPHALT REMOVAL AND REPLACEMENT, 10.5-INCH BINDER, 1.5-INCH SURFACE	5,800	SQYD	\$	\$
72	HOT-MIX ASPHALT DRIVEWAY REMOVAL AND REPLACEMENT, 3-INCH	100	SQYD	\$	\$
73	PCC DRIVEWAY REMOVAL AND REPLACEMENT, 6-INCH	150	SQYD	\$	\$
74	PCC DRIVEWAY REMOVAL AND REPLACEMENT, 8-INCH	75	SQYD	\$	\$
75	CONCRETE CURB AND GUTTER REMOVAL AND REPLACEMENT	1,900	FOOT	\$	\$
76	PCC SIDEWALK REMOVAL AND REPLACEMENT	12,900	SQFT	\$	\$
77	DETECTABLE WARNINGS	30	SQFT	\$	\$
78	PAVEMENT MARKING - LINE, 4-INCH (THERMOPLASTIC)	550	FOOT	\$	\$
79	PAVEMENT MARKING - LINE, 6-INCH (THERMOPLASTIC)	3,730	FOOT	\$	\$
80	PAVEMENT MARKING - LINE, 12-INCH (THERMOPLASTIC)	570	FOOT	\$	\$
81	PAVEMENT MARKING - LINE, 24-INCH (THERMOPLASTIC)	220	FOOT	\$	\$
82	DETECTOR LOOP REPLACEMENT	200	FOOT	\$	\$

BID FORM

00 41 00.41-7 (221587.40) IEPA-PWSLP Revision dated November 9, 2023

83	REMOVAL AND REPLACEMENT OF SIGNS	10	EACH	\$	\$
84	TREE ROOT PRUNING	52	EACH	\$	\$
85	TREE TRIMMING	1	LSUM	Lump Sum	\$
86	DUST CONTROL	55	DAY	\$	\$
87	REMOVAL AND REPLACEMENT OF UNSUITABLE MATERIAL	179	CUYD	\$	\$
88	SOIL TESTS FOR CONTAMINANTS	8	EACH	\$	\$
89	CONTAMINATED WASTE DISPOSAL	179	CUYD	\$	\$
TOTAL AMOUNT OF BID:					
				\$	

5. Bidder agrees the Work shall be completed based on the interim milestones specified in Section 01 31 13.16. Bidder agrees the Work will be substantially completed within 150 calendar days after the Contract Time commences to run as provided in paragraph 2.03 of the General Conditions, and completed and ready for final payment in accordance with Paragraph 1.11 of the Supplementary Conditions within 180 calendar days after the Contract Time commences to run. The estimated Notice to Proceed date is April 1, 2024.
- a. Bidder accepts the provisions of the Supplementary Conditions as to liquidated damages in the event of failure to complete the Work on time.
6. Bidder submits the required Bid Security in the form of (Certified Check or Bid Bond) in the amount of _____ or _____ Percent of the Bid Amount.
7. Bidder will be obtaining Performance and Payment Bonds through the following local agent or broker:
- Name: _____
- Address: _____
- Telephone: _____ email: _____
8. Bidder submits all items listed in Section 00 43 93.41 – Bid Submittal Checklist.

BID FORM

00 41 00.41-8 (221587.40) IEPA-PWSLP Revision dated November 9, 2023

9. Terms used in this Bid which are defined in the Standard General Conditions of the Construction Contract included as part of the Contract Documents have the meanings assigned to them in the General Conditions.

10. Bidder acknowledges receipt of the following Addenda:

<u>Addendum Number</u>	<u>Date Received</u>
_____	_____
_____	_____
_____	_____

11. Bidder certifies that all iron and steel products used in the project for the construction, alteration, maintenance, or repair of a public water system are produced in the United States in compliance with Section 608 of the Water Resources Reform and Development Act”.

12. By submission of the Bid, Bidder certifies, and in the case of a Joint Bid each party thereto certifies as to his own organization, that in connection with the Bid:

- a. The prices in the Bid have been arrived at independently, without consultation, communication, or agreement, for the purpose of restricting competition, as to any matter relating to such prices with any other Bidder or with any competitor.
- b. Unless otherwise required by law, the prices which have been quoted in the Bid have not knowingly been disclosed by the Bidder, prior to opening, directly, or indirectly to any other Bidder or to any competitor; and
- c. No attempt has been made or will be made by the Bidder to induce any other person or firm to submit or not to submit a Bid for the purpose of restricting competition.

13. The person signing this Bid certifies that: (Check applicable box.)

- He/She is the person in the Bidder's organization responsible within that organization for the decision as to the prices being bid and that he/she has not participated, and will not participate, in any action contrary to that above; or
- He/She is not the person in the Bidder's organization responsible within that organization for the decision as to the prices being bid but that he/she has been authorized to act as agent for the persons responsible for such decision in certifying that such persons have not participated, and will not participate, in any action contrary to that above, and as their agent shall so certify; and shall also

certify that he/she has not participated, and will not participate, in any action contrary to that above.

14. Bidder is currently certified as an MBE or WBE under EPA's DBE program?

Yes No

Respectfully submitted, signed, and sealed this _____ day of _____, 20__.

(SEAL)

Bidder

By _____

Name – Title

ATTEST:

Name - Title

END OF BID FORM