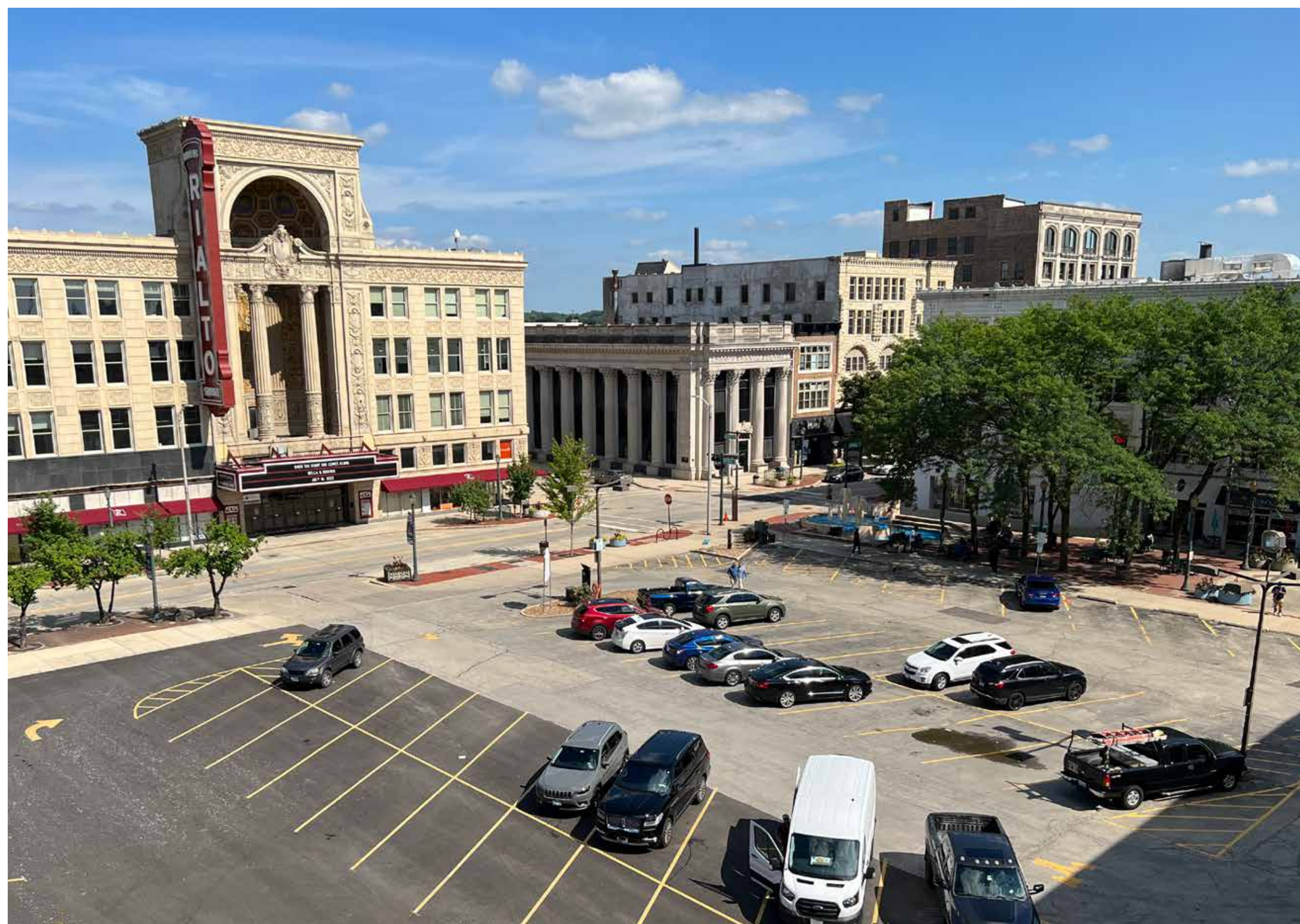


# Welcome





Secluded spaces feel unsafe



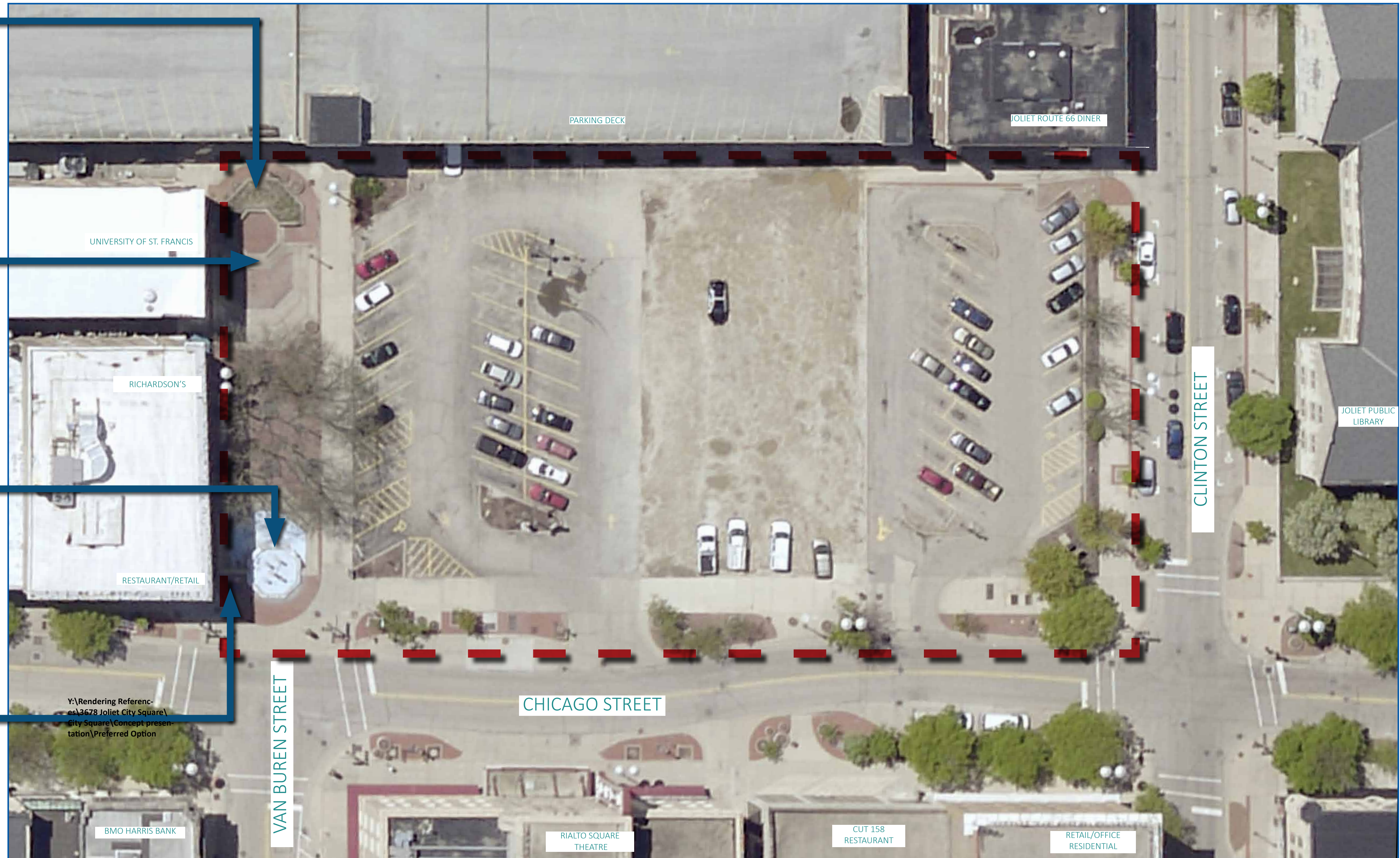
Level changes are inaccessible and create drainage problems



Fountain is unusable most of the year



Storefront visibility is blocked



Aerial Photo

Y:\Rendering References\3678 Joliet City Square\City Square (Concept presentation)\Preferred Option





» **2014-2015: Downtown Joliet Plan**

This plan identified the creation of a larger gathering space (larger than the existing Van Buren Street Plaza) as a priority action.

» **2017-2018: Property Acquisition**

The City prioritized the acquisition of the parcels on this block to ensure the future actualization of the much needed public space. The City acquired the last remaining property, the State’s Attorney’s Building at 105 N. Chicago Street in 2018. The City invested \$185,963 to have the State’s Attorney’s Building demolished and prepared for the future Square.

» **2017-2018: Chicago Street Corridor Plan**

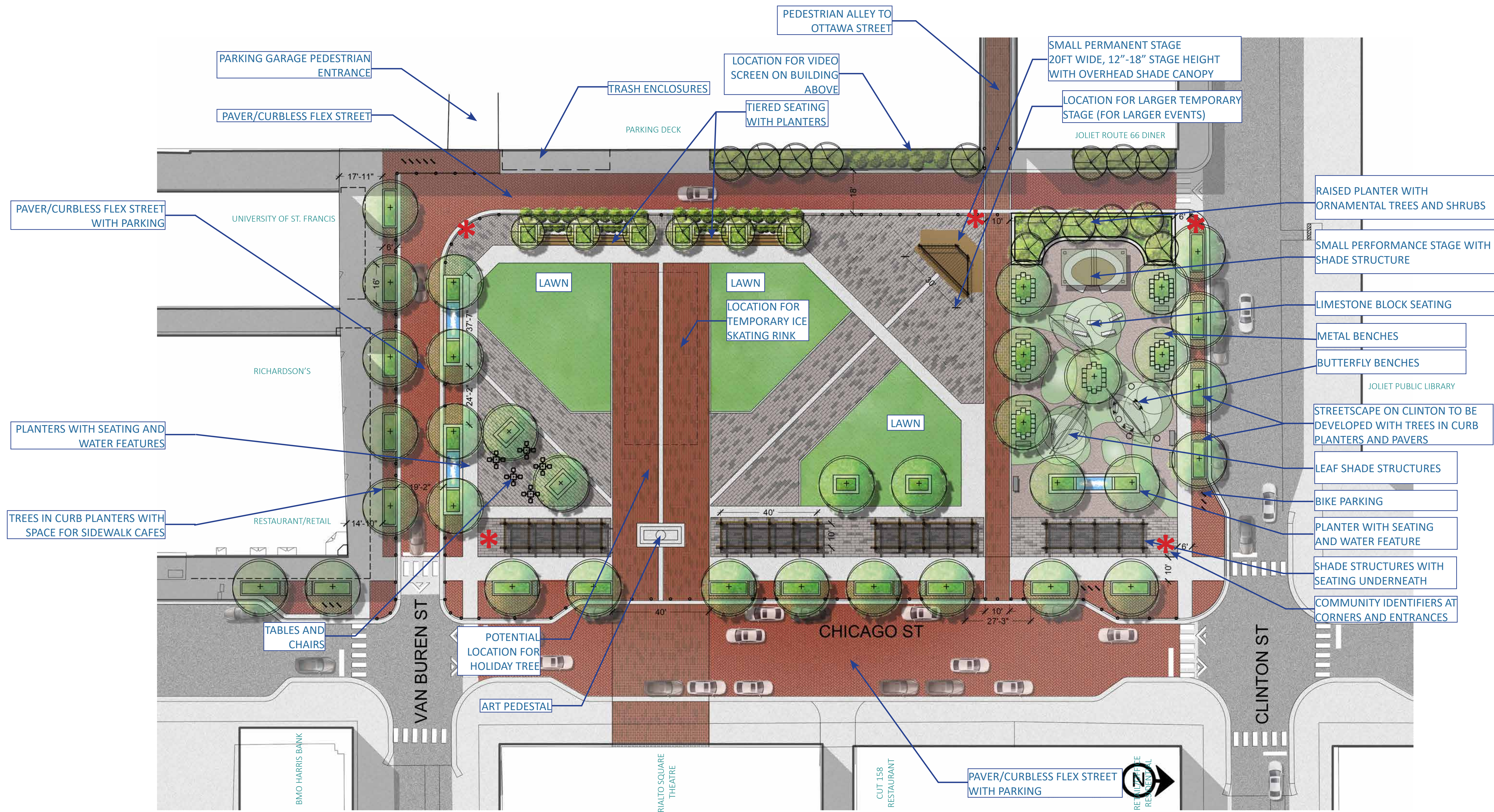
The City of Joliet developed a high-level conceptual design for a new urban square across from the Rialto Square Theater and concepts for a redesigned Chicago Street. The concepts showcased in this plan were developed over a 14-month period with many working meetings with City staff and stakeholders, Advisory Committee meetings, and a public forum.

» **2022-2023: Joliet City Square Design Project**

The City of Joliet is refining concept designs and then developing construction plans for the City Square Project.







\* = LOCATIONS FOR COMMUNITY IDENTIFIERS





View A: sketch looking Northeast



View B: sketch looking Northwest

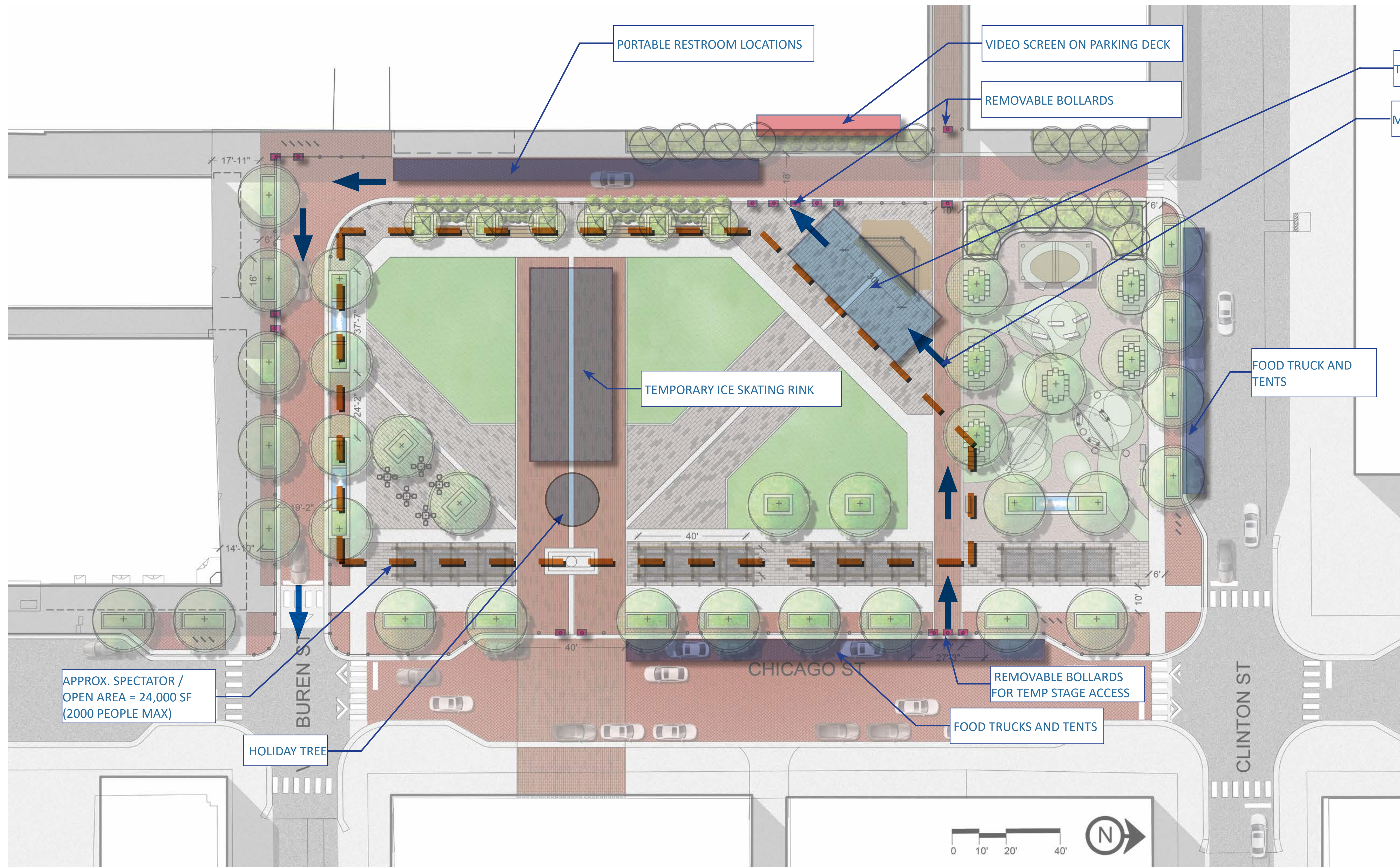


View C: sketch looking Southwest



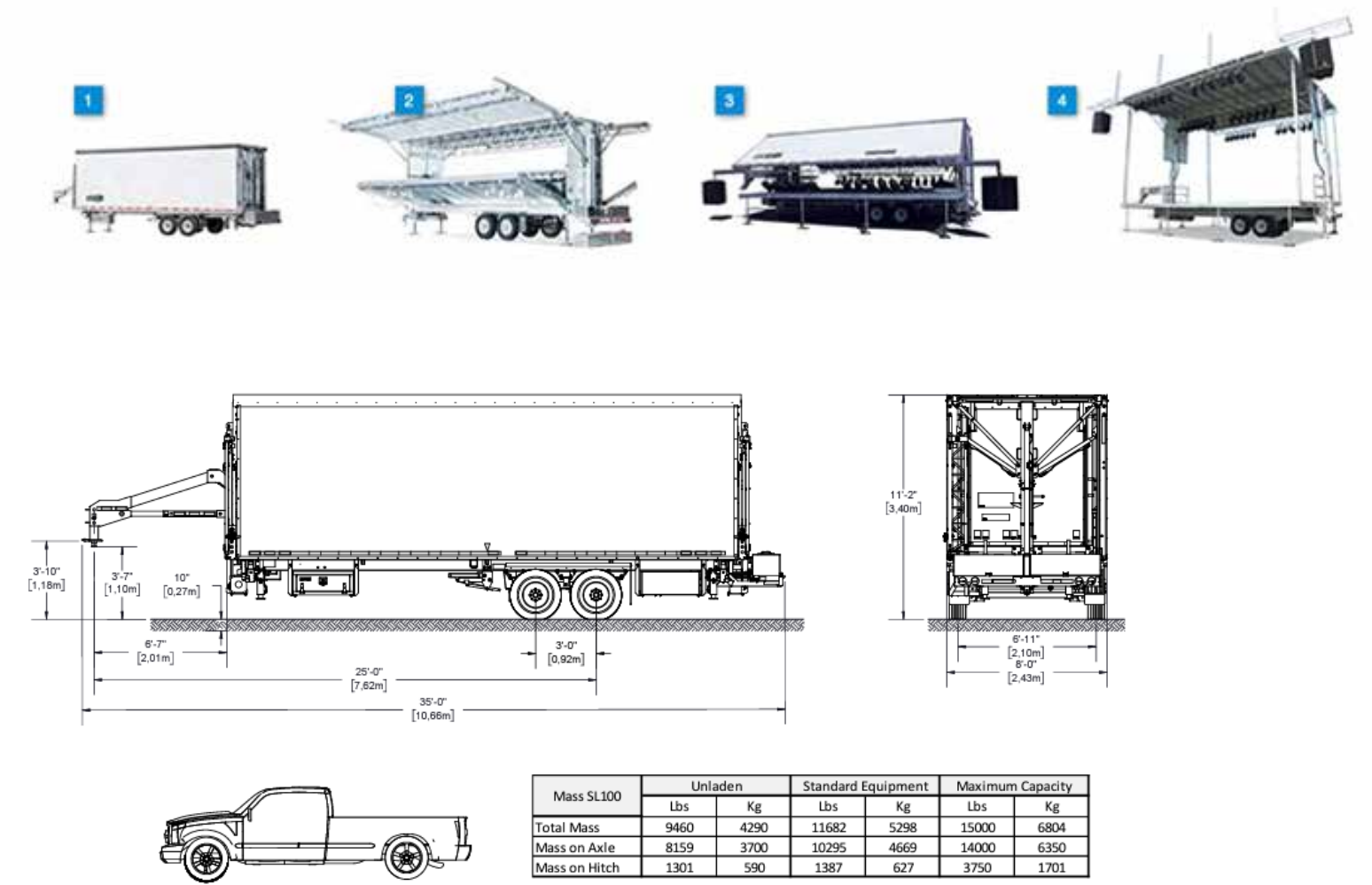
Key Plan



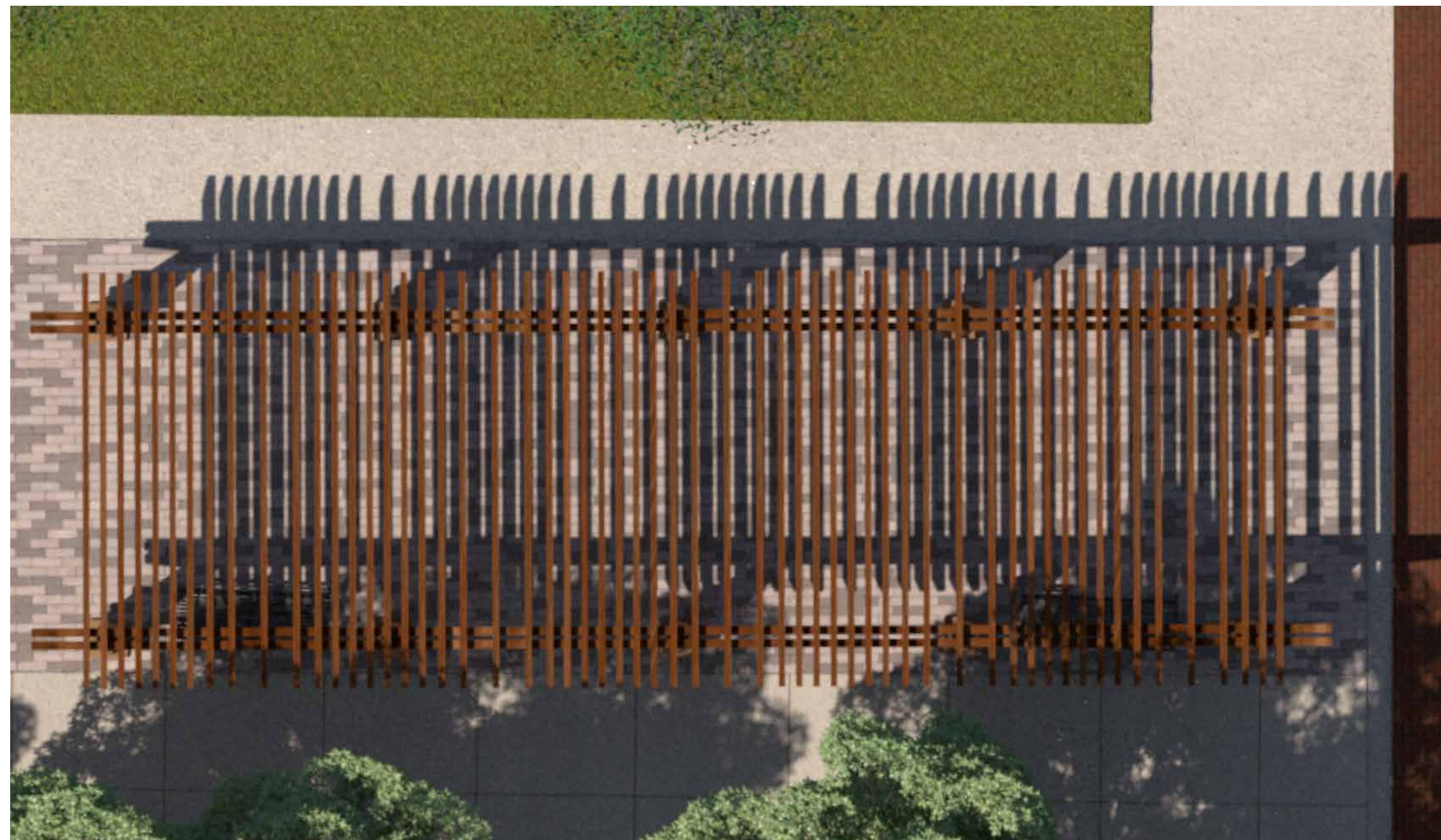


### Why do we need space for a temporary stage?

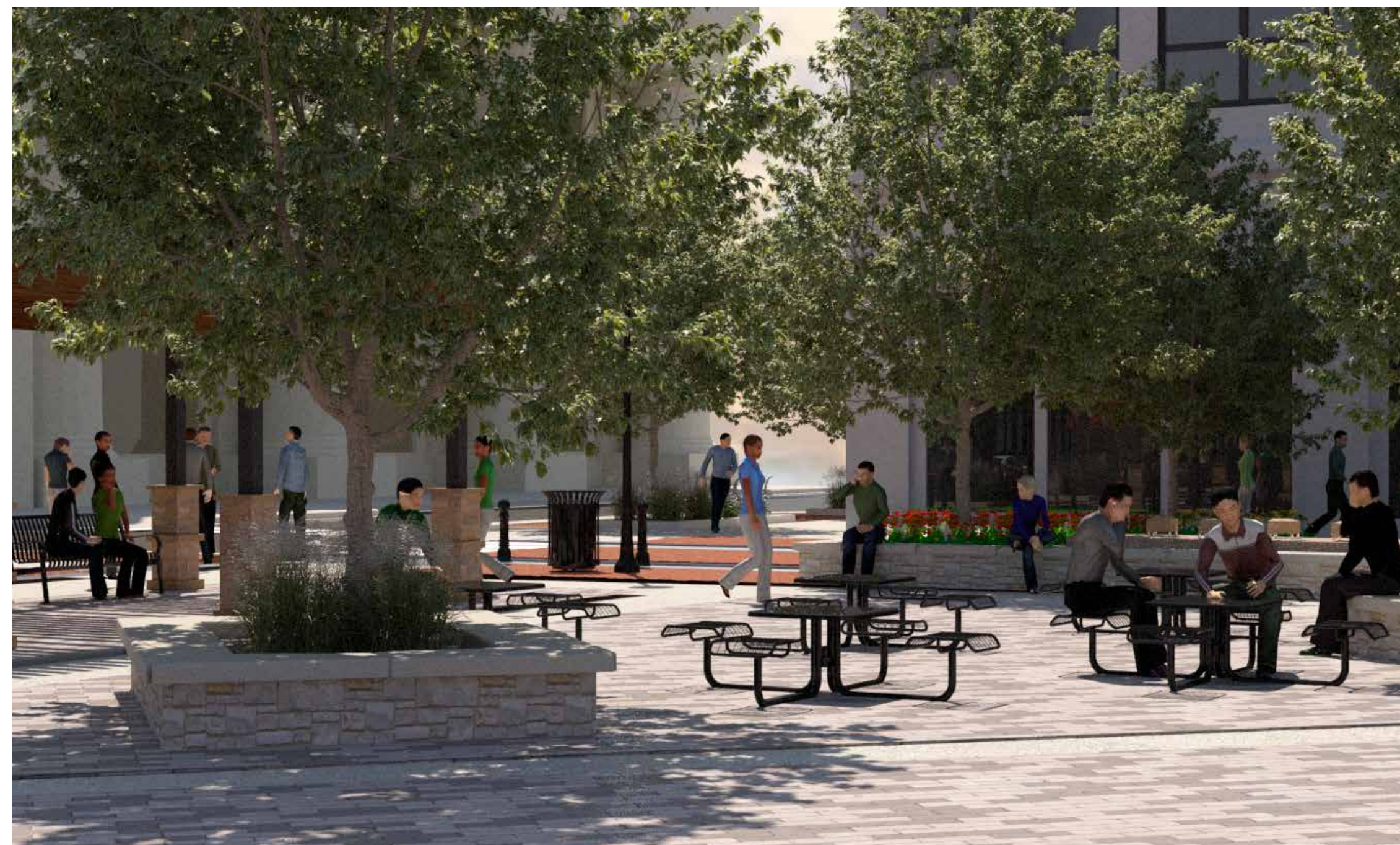
The stageline SL-100 mobile stage is used for large music events in Joliet now. This mobile solution can have a high stage height (3'-6" to 4'-3") and support heavy lighting and sound equipment, along with banners. The features on this mobile stage make it well suited for larger music events, and would be difficult to design into a permanent stage.







Shade structures



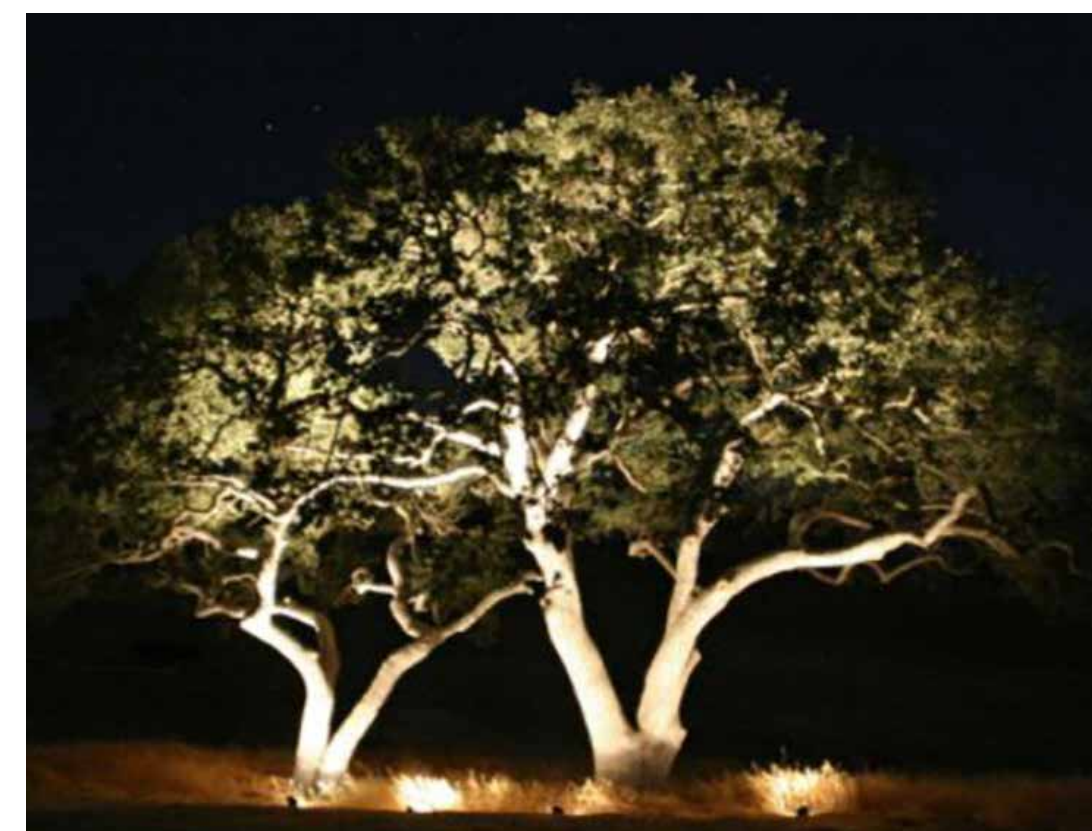
Seating Areas



Plaza light pole and Festoon lighting



Metal Bench



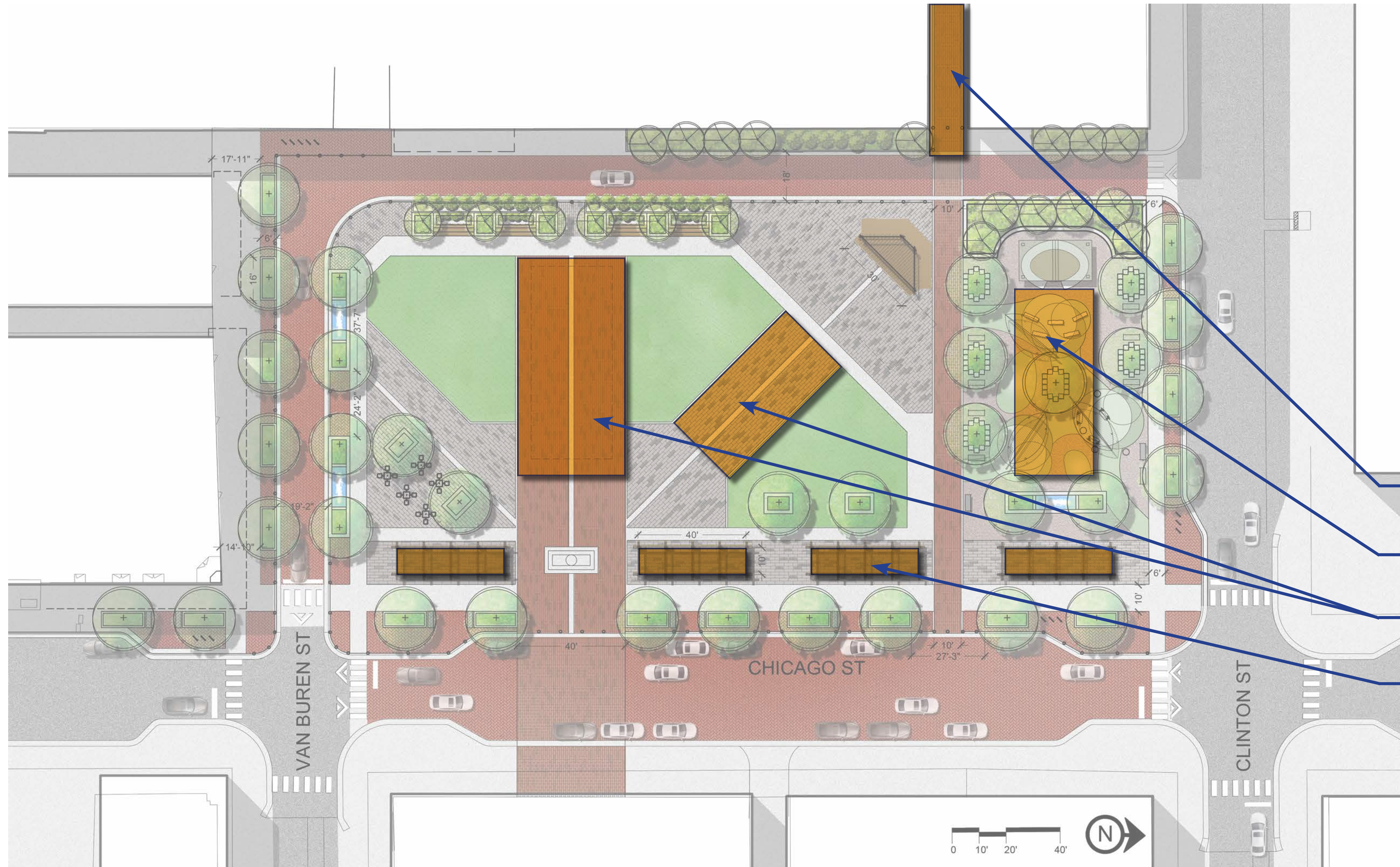
Uplighting trees



Note: Removable bollards will be used in locations that require maintenance or event access.

Bollard





Festoon lighting is attached to cables that are strung from poles. The overhead accent lighting creates a ceiling effect and provides warmth and ambiance.



**Potential locations:**

**Pedestrian Alley**

**Family Gathering Area**

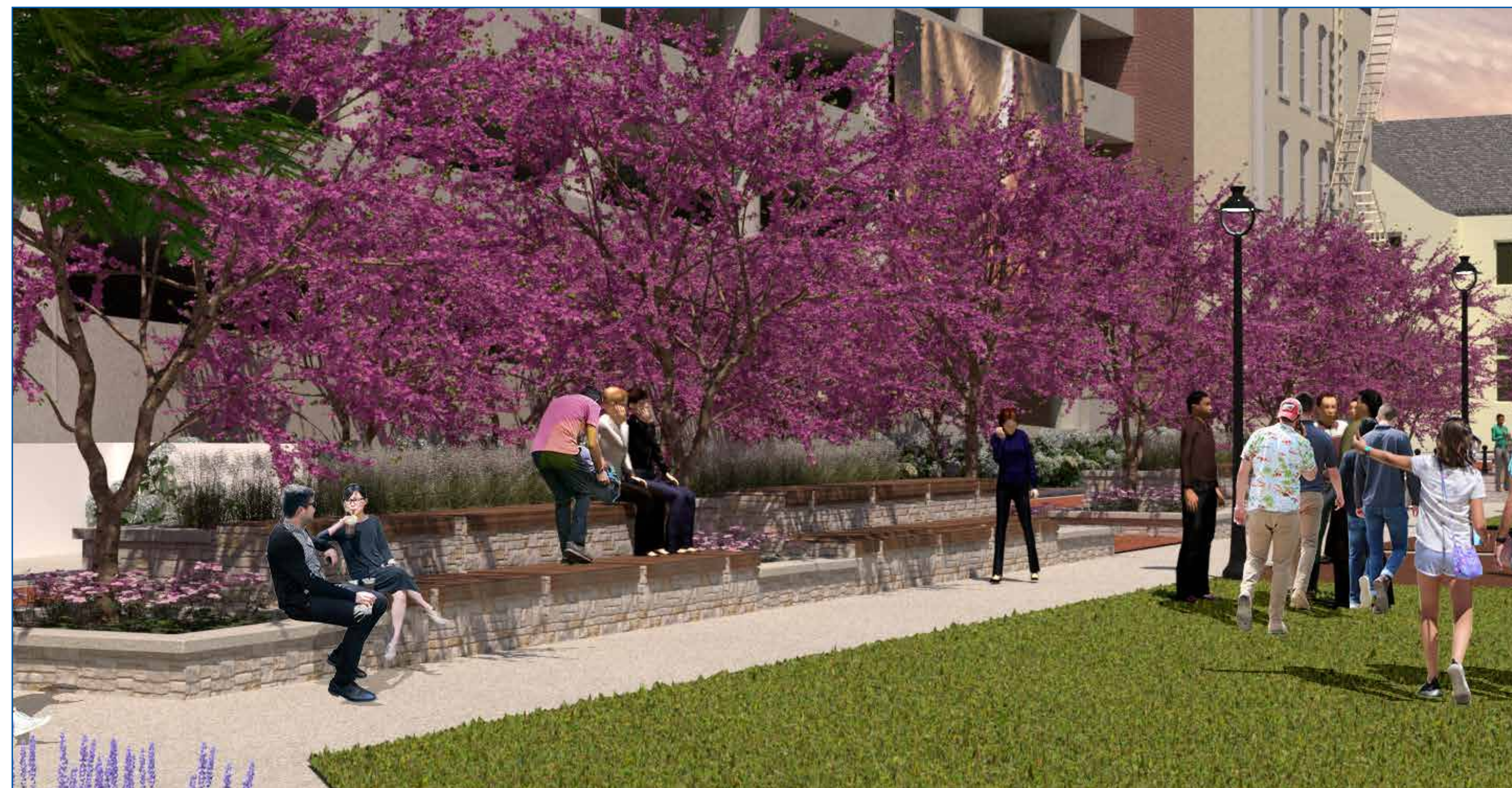
**1 or 2 areas within the open space**

**Under shade structures along Chicago Street**





**Water feature planters**



**Custom tiered seating with planters**



# Family Gathering Area



**Aerial Perspective**

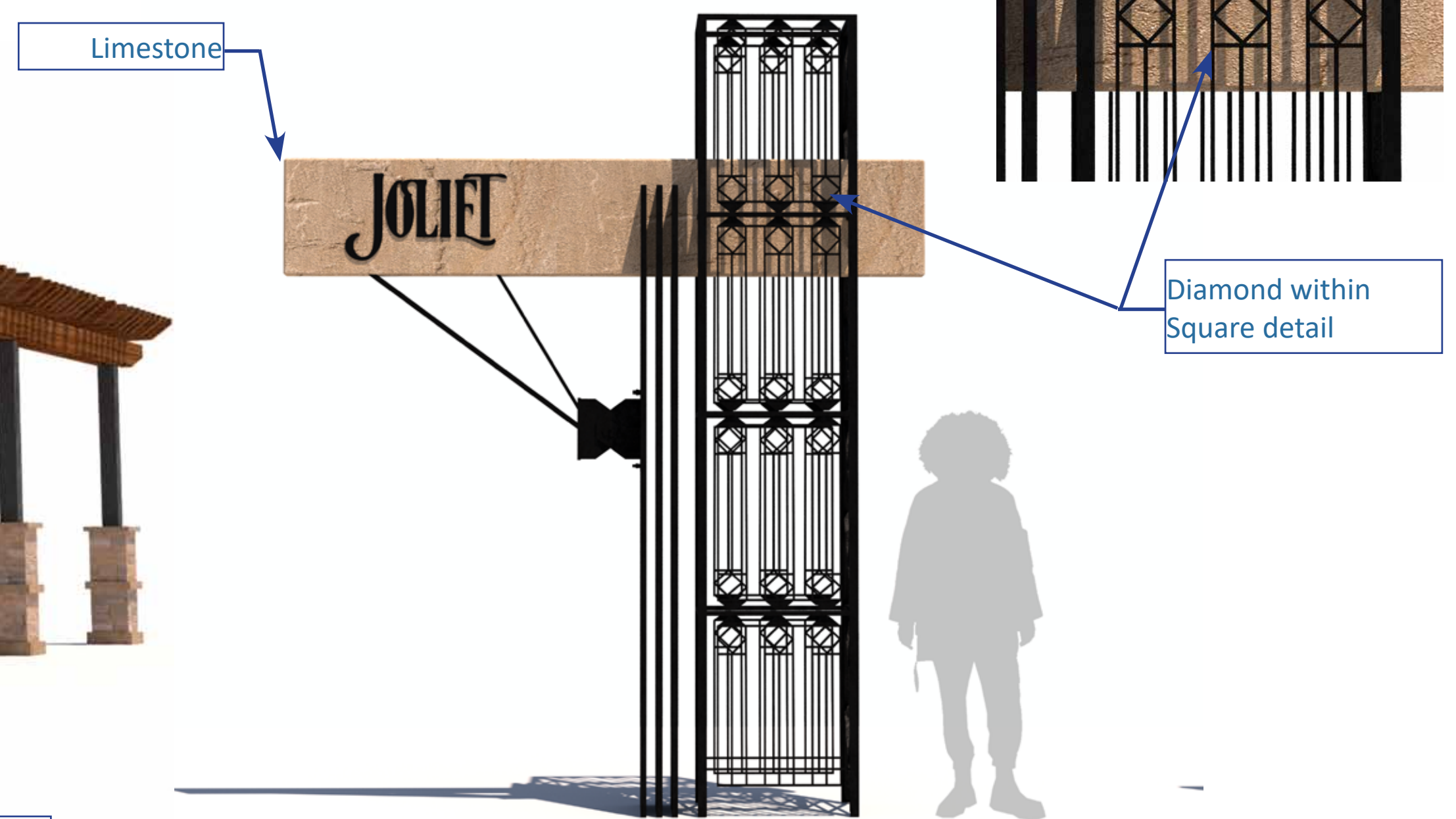
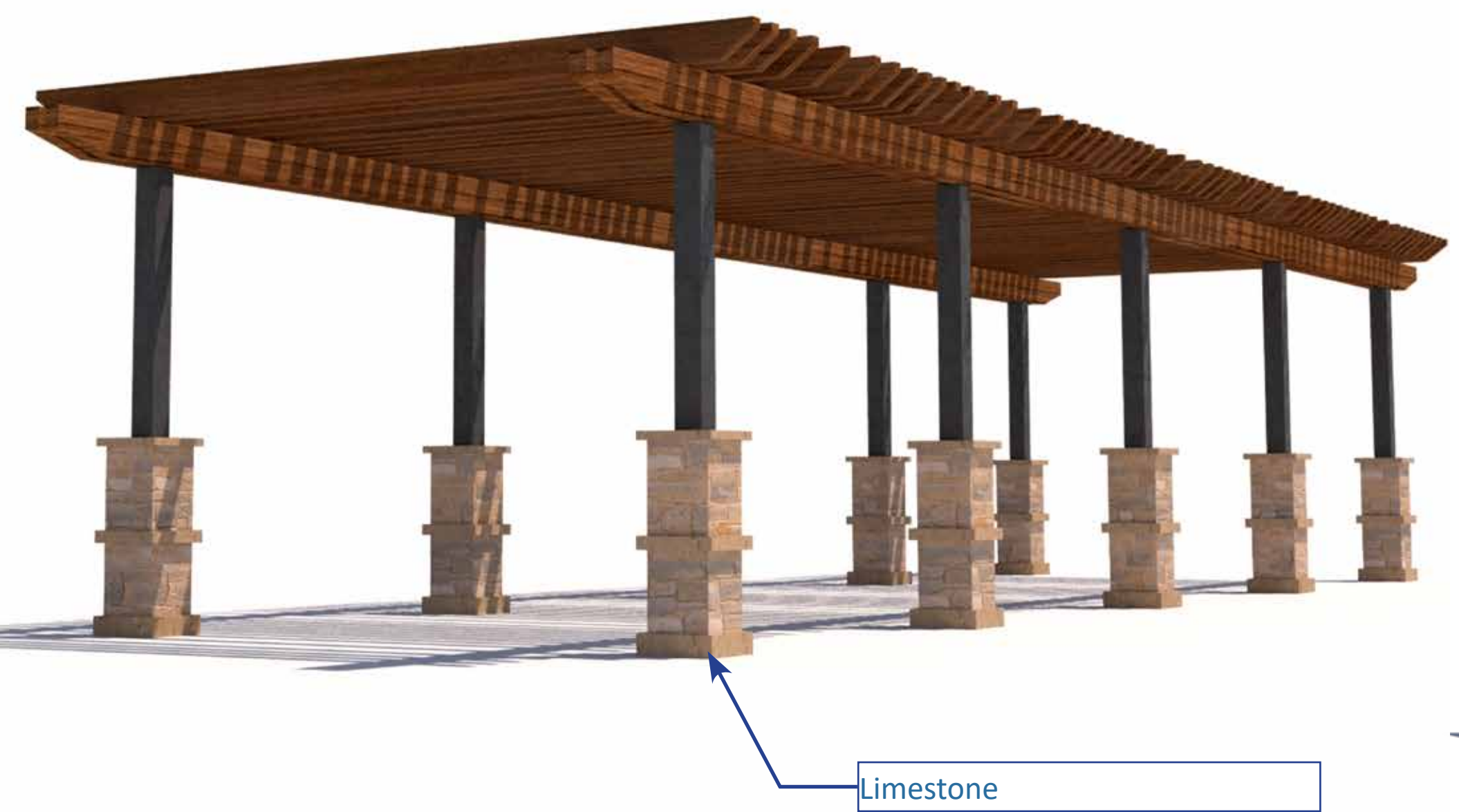
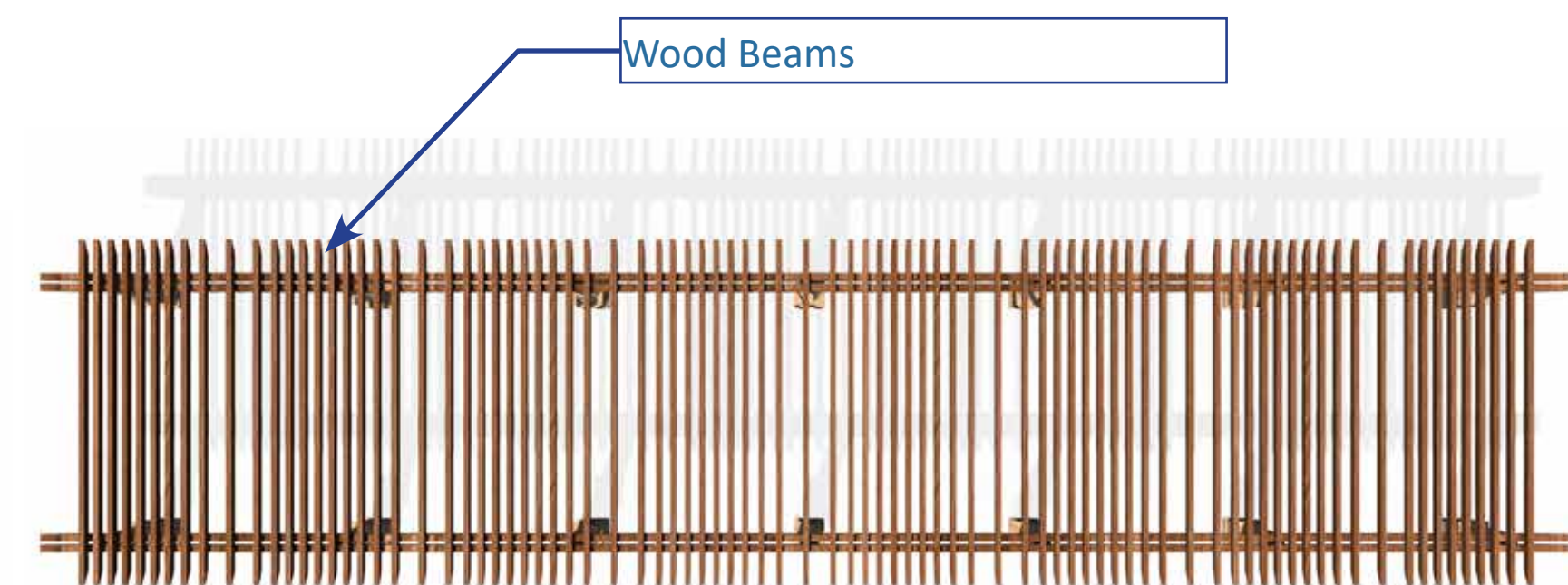
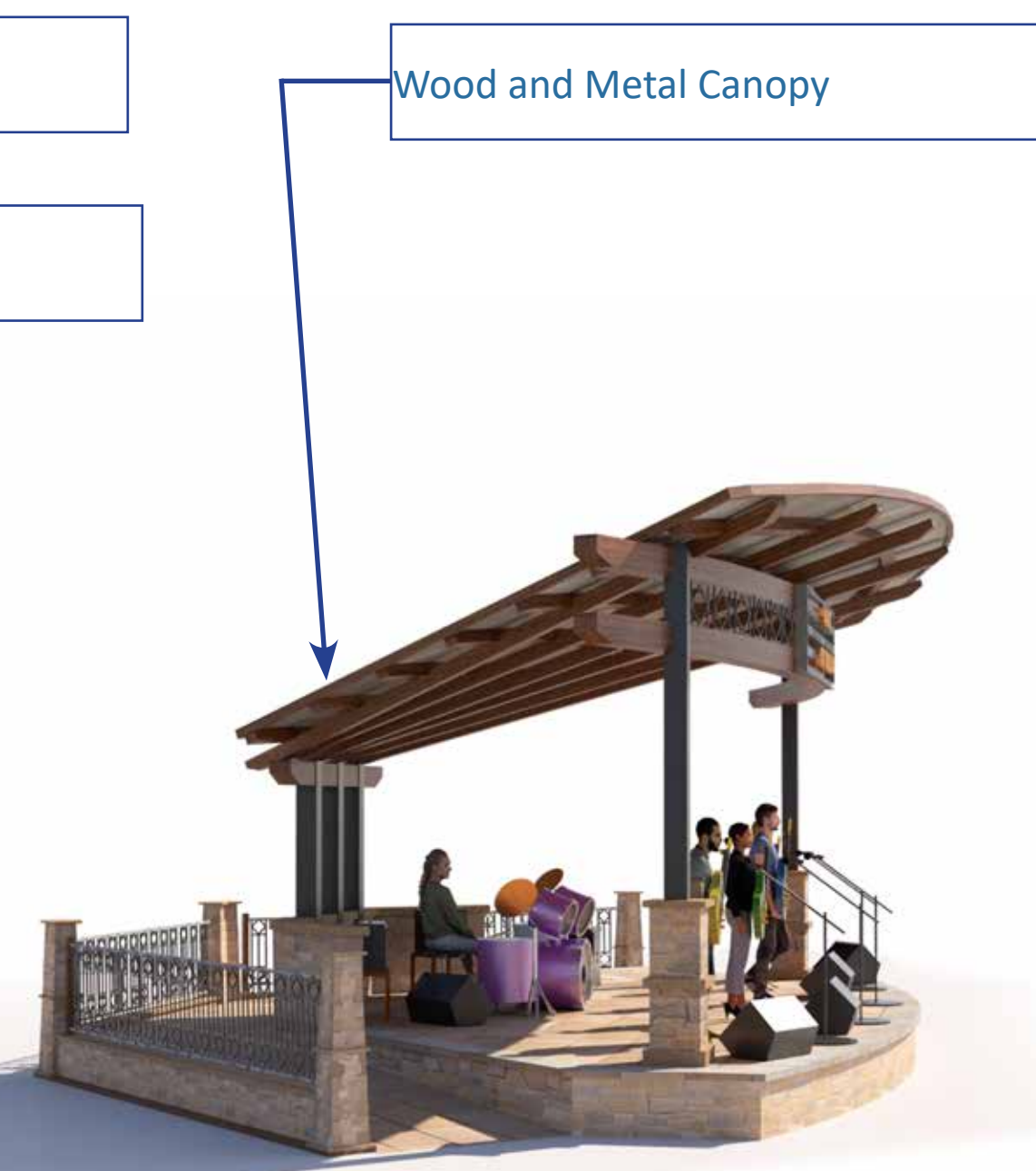
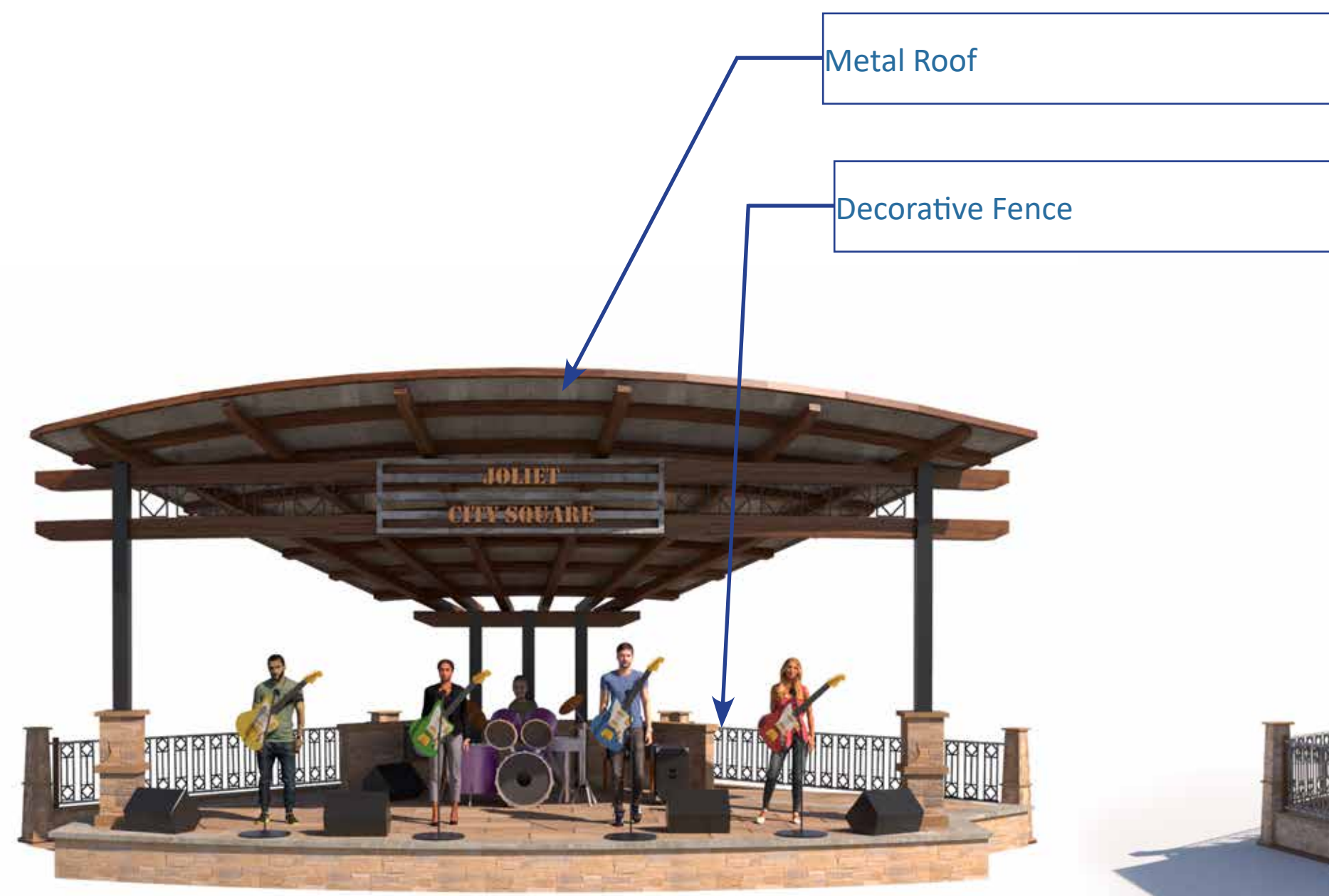


**Family stage**



**Butterfly benches**





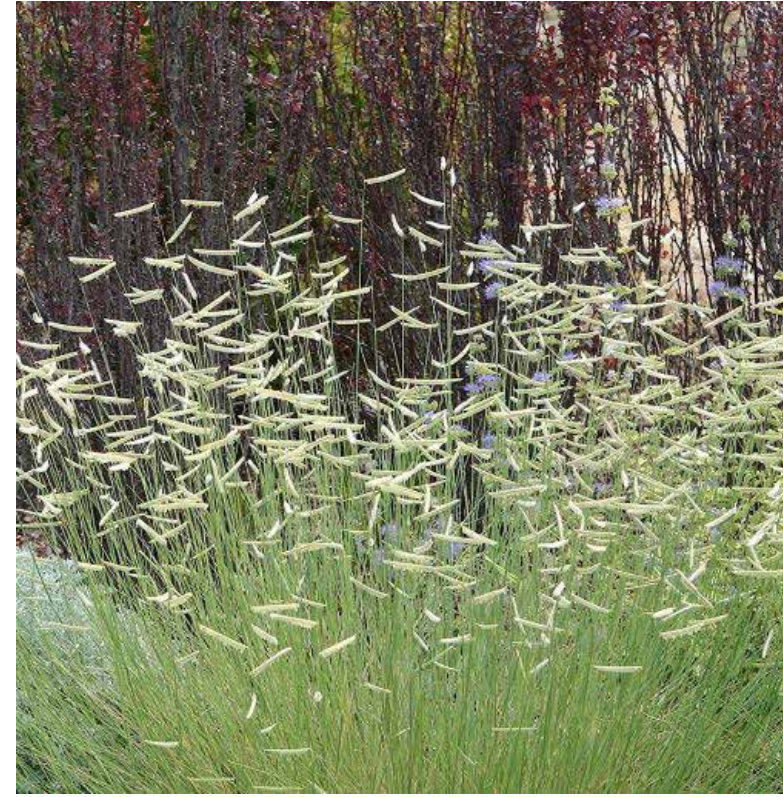
**Bike Rack Detail**

**Precedents from community**



**Preferred Themes**





**Blue grama**



**Junegrass**



**Wild Petunia**



**Kamtschat sedum**



**White Prairie Clover**



**Cardinal flower**



**Wild beardtongue**



**Chicago Apache Daylily**



**Happy Returns Daylily**



**Caradonna sage**



**Black-eyed susan**



**Echinacea**



**Oakleaf hydrangea**



**Witch hazel**



**Tor spirea**



# Landscape trees



**Dawn Redwood**



**Hackberry**



**Elm 'New Horizon'**



**Chinese Lilac**



**Autumn Blaze Maple**



**Eastern redbud**



**Swamp white oak**



**Kentucky coffeetree**

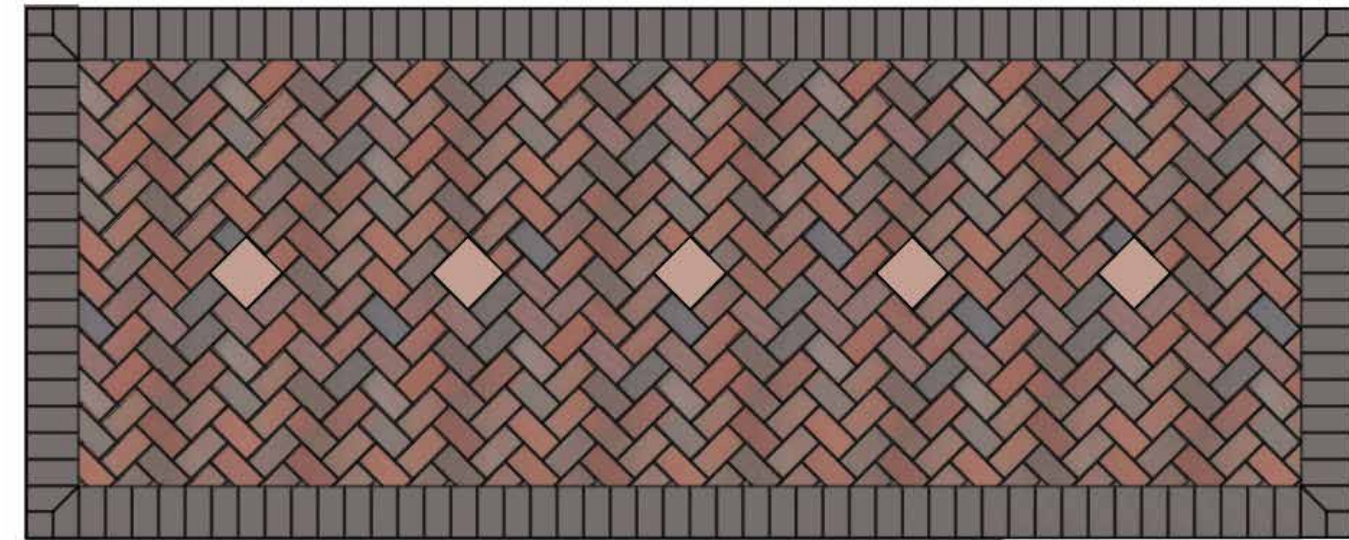


**American Hornbeam**

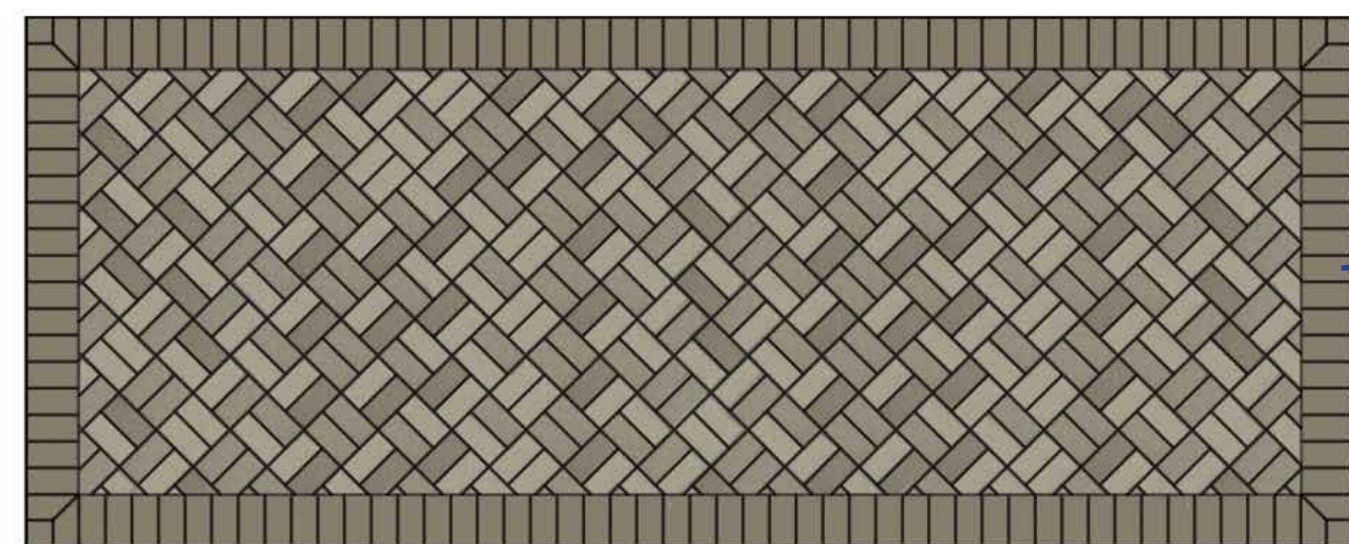


# Clay Brick Paver Options

**4x8 red blend**



**4x8 grey blend**



4x8 pavers will be used in higher traffic areas such as the flex streets and areas around the stage



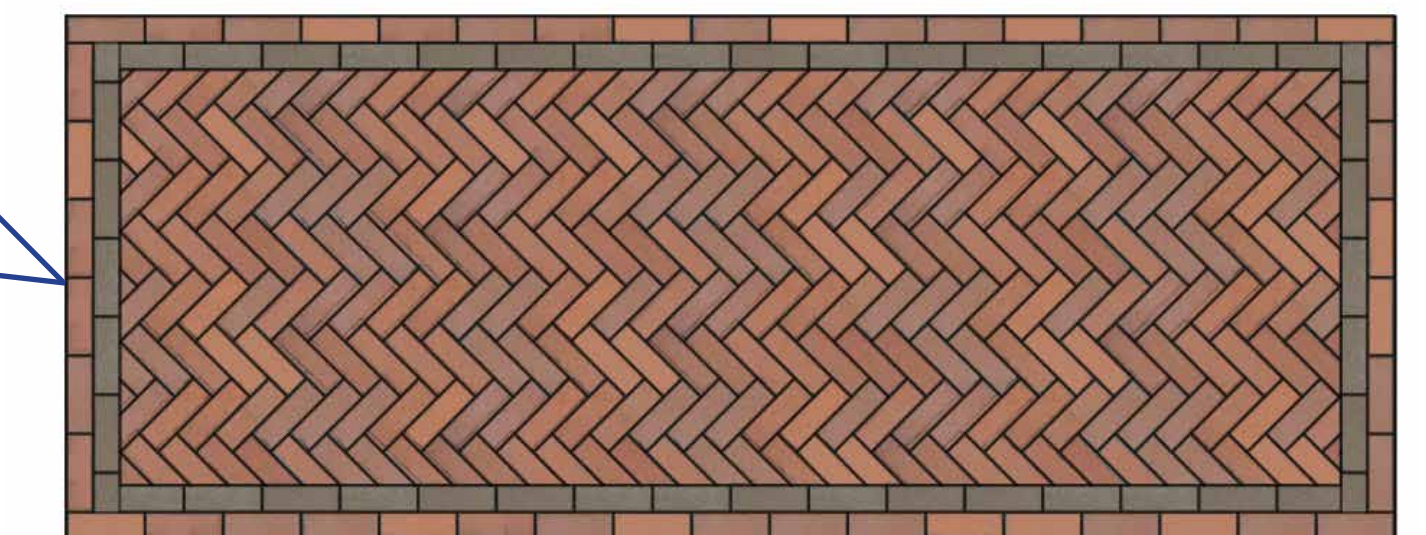
Proposed stamped paver accent in contrasting color

8x8 Accent pavers can be added to both 4x8 and 4x12 pavers in pedestrian areas



4x12 pavers will be used in pedestrian areas along the streetscape, the interior of the square, and around the shade structures

**4x12 red blend**



**4x12 grey blend**





## What do you think of the design concepts? We want to hear from you!

- Fill out a comment form and leave it with one of the project representatives
- Place red/green dots on the exhibit boards indicating elements that you like (green) and don't like (red)
- Place post-it notes on boards with comments
- Add comments to the handouts that show the two concept design options and leave it with one of the project representatives
- Email your comments to [CitySquare@Joliet.gov](mailto:CitySquare@Joliet.gov)

All open house materials are now posted on the project website. The public comment period for comments related to this open house will be open through August 11, 2023.

**Project Website: [Joliet.gov/CitySquare](https://Joliet.gov/CitySquare)**