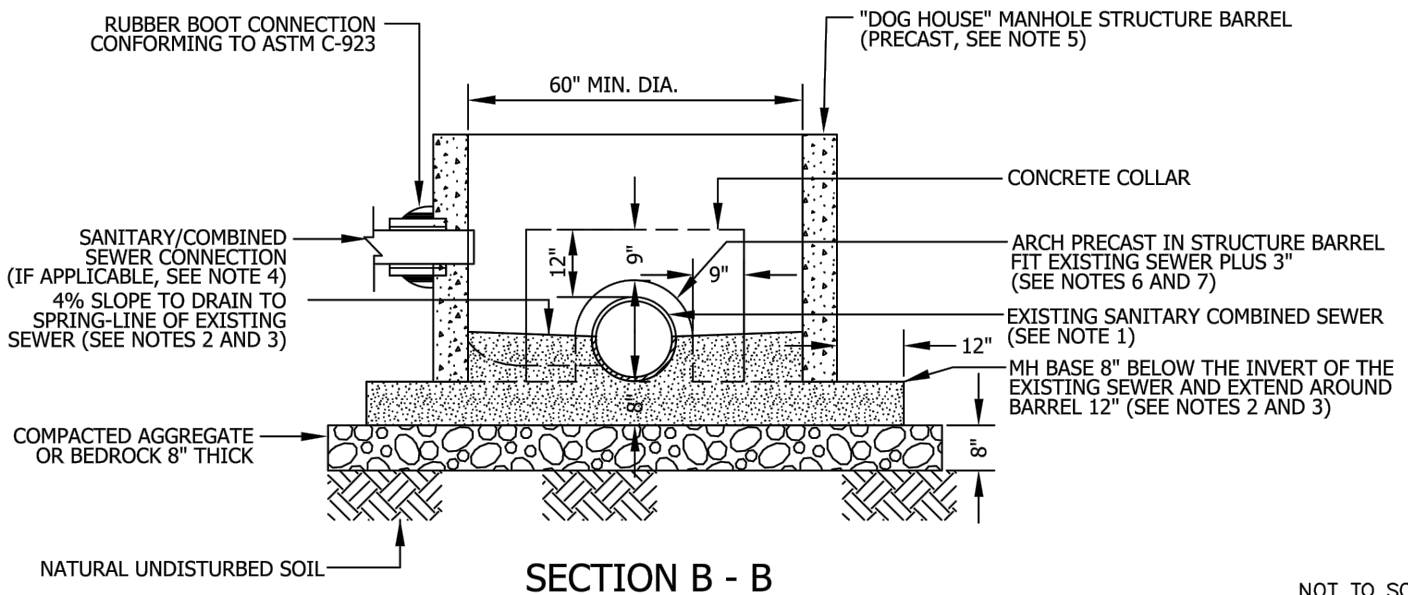


**DOG HOUSE MANHOLE PROFILE**

**SECTION A - A**



**SECTION B - B**

NOT TO SCALE

**NOTES:**

1. DOGHOUSE MANHOLES SHALL ONLY BE USED WHEN DIRECTED BY THE ENGINEER, TYPICALLY WHEN BYPASS OPERATIONS COULD CREATE RISK OF POSSIBLE BASEMENT BACKUPS.
2. EXISTING SANITARY SEWER MUST BE 15" DIAMETER OR LARGER FOR "DOGHOUSE" MANHOLE USE.
3. INTEGRAL POUR FOR BASE AND BENCH. (NO PRECAST BASE)
4. ALL POURED-IN-PLACE CONCRETE MUST BE 4000 PSI NON-SHRINK MIX.
5. EXTERNAL DROP CONNECTION MUST BE PROVIDED IF INVERT OF CONNECTING SEWER IS 24" OR MORE ABOVE THE INVERT OF THE OUTLET.
6. MANHOLE DIAMETER MINIMUM 60"-INCREASES BASED ON THE EXISTING SEWER DIAMETER.
7. CONCRETE BONDING AGENT MUST BE APPLIED TO ALL INTERFACES OF PRECAST CONCRETE SURFACES WITH POURED-IN-PLACE CONCRETE.
8. A CURVED INTERNAL ARCH FORM MUST BE USED DURING COLLAR CONCRETE FILL. NO BRICK, MORTAR, OR DEBRIS IS TO BE USED IN PLACE OF CONSOLIDATED CONCRETE.
9. DEBRIS MUST NOT BE ALLOWED TO ENTER THE SEWER SYSTEM AT ANY TIME DURING CONSTRUCTION.
10. ALL DIMENSIONS NOTED ARE MINIMUM ALLOWED.
11. THE STRUCTURE MUST NOT BE BACKFILLED FOR A MINIMUM OF 24 HOURS AFTER CONSTRUCTION.

NOT TO SCALE

CITY OF JOLIET, ILLINOIS

DOGHOUSE MANHOLE  
SAN-20

DATE: NOVEMBER 2022