

CITY OF JOLIET COUNCIL
CHAMBERS AV DESIGN

**A/V SYSTEM ENGINEERING AS-BUILT
DRAWINGS**

12/14/2012

BY



FLOOR PLAN SYMBOL CATEGORIES											
COMMUNICATIONS		AUDIO/VIDEO		ENVIRONMENTAL (HVAC)		CONTROL		ELECTRICAL		CENTRAL VACUUM	
TYPE	SYMBOL	TYPE	SYMBOL	TYPE	SYMBOL	TYPE	SYMBOL	TYPE	SYMBOL	TYPE	SYMBOL
SAT ANTENNA		LOUD-SPEAKER		HEAD-END		IR RECEIVER		SURGE PROTECTR		VACUUM POWER UNIT	
ANTENNA		VIDEO DISPLAY		THERMO-STAT		SHADE		BACKUP GENERATOR		VACUUM INLET	
PHONE PORT		VIDEO PROJ.		MUMIK-STAT		CURTAINS		UPS			
DATA PORT		REMOTE AV SOURCE		THERMO-STAT/ HUMIDI-STAT		LIFT/ MOUNT		DIMMER/ SWITCH			
PHONE AND DATA PORT		LIFT/ MOUNT		TEMP. SENSOR		VOLUME CONTROL		LIGHTING KEYPAD			
MISC. PORT		PROJ. SCREEN		HUMIDITY SENSOR		KEYPAD		LIGHTING TOUCH-PANEL			
HEAD-END		MASKING SCREEN		TEMP/ HUMIDITY SENSOR		TOUCH-PANEL		HED-END			
SERVICE DEMARC.		HEAD-END		CONTROLLER DEVICE		HEAD-END		WIRELESS PROC.			
WIRELESS PROC.		WIRED PROC.				CONTROLLED DEVICE		WIRED PROC.			
WIRED PROC.		VOLUME CONTROL				WIRELESS PROC.		LIGHTING LOAD			
INTERCOM STATION		KEYPAD				WIRED PROC.		AC RECEPTACLE			
FAX/ PRINTER/ COPIER		TOUCH-PANEL				JOYSTICK		CONTROLLED DEVICE			
KEYBOARD/ MOUSE		VIDEO CAMERA				TWO STATE SENSOR		SHADE			
PC/SERVER		JOYSTICK				VARIABLE STATE SENSOR		CURTAINS			
		THEATER SEAT				WEATHER STATION		REMOTE CONTROL			
		SEAT ACTUATOR				REMOTE CONTROL					
		REMOTE CONTROL									

FLOOR PLAN NOTES (UNLESS OTHERWISE INDICATED)	
1	LOW VOLTAGE WALL PLATES INSTALLED AT AC OUTLET HEIGHT (12" ABOVE FINISHED FLOOR)
2	CENTER OF KEYPADS AND VOLUME CONTROLS INSTALLED AT 48" ABOVE FINISHED FLOOR
3	CENTER OF TOUCHPANELS AND THERMOSTATS INSTALLED AT 58" ABOVE FINISHED FLOOR
4	CENTER OF TV'S INSTALLED AT 60" ABOVE FINISHED FLOOR
5	CENTER OF IN-WALL SPEAKERS INSTALLED AT 72" ABOVE FINISHED FLOOR
6	CENTER OF LIGHTING CONTROLS INSTALLED AT 48" ABOVE FINISHED FLOOR

FLOOR PLAN SYMBOL NOTES

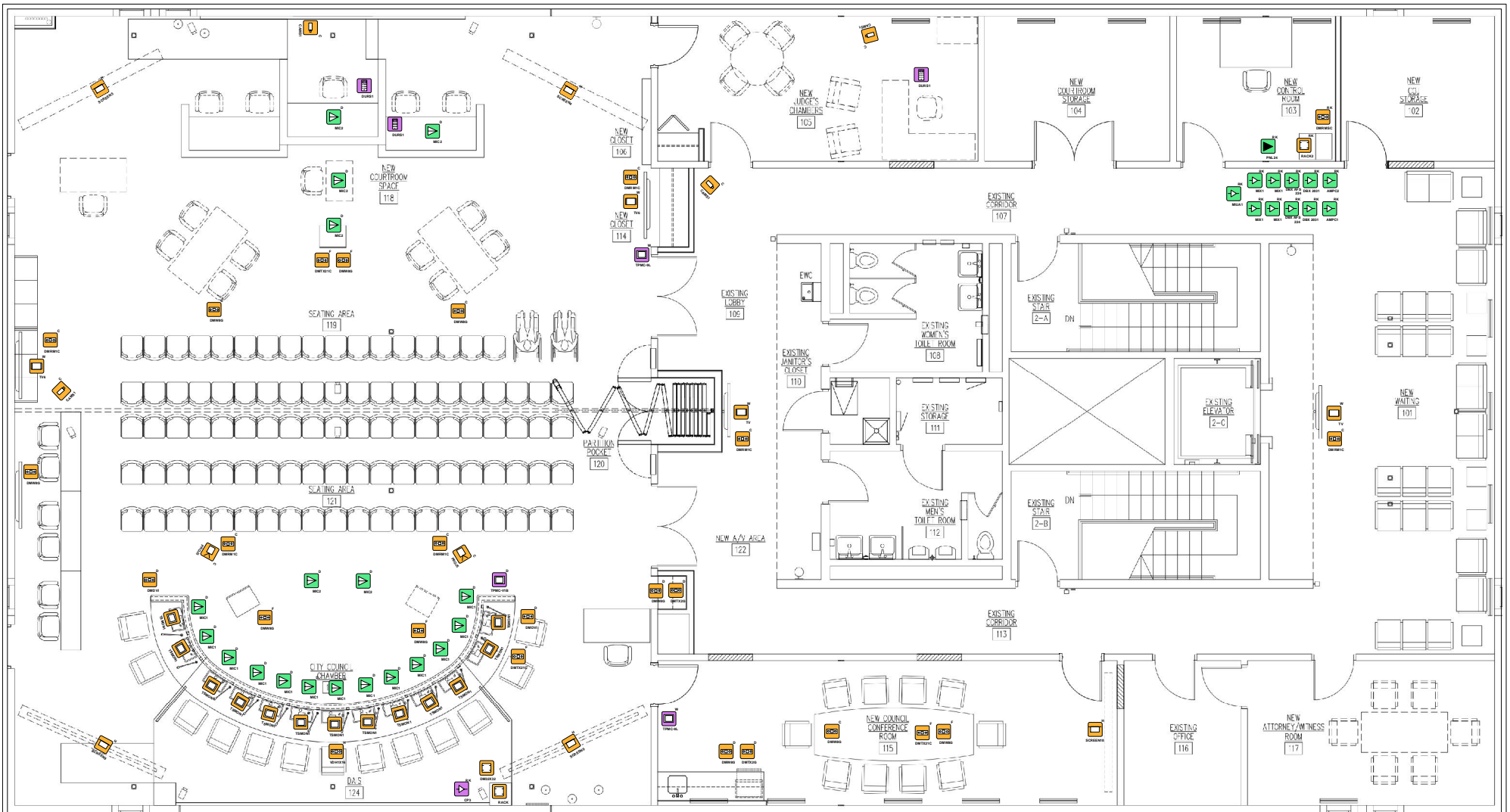
DEVICE MOUNT (X): SYMBOL LABEL (Y):


C=CEILING DEVICE ABBREVIATION (REFER TO DEVICE LEGEND)
D=DESK/TABLE
F=FLOOR
G=GROUND
H=HIDDEN
M=MULLION
P=PEDESTAL/POLE
RK=RACK
RF=ROOF
SP=SPEAKER
S=SURFACE
T=TURNSTILE
W=WALL
XXX AFF = XXX INCHES ABOVE FINISHED FLOOR

TITI F CITY OF JOLIET COUNCIL CHAMBERS AV DESIGN	REV.	REVISION DESCRIPTION	DATE	BY	REVISED 12/13/2012	SCAJ F NONE	PAGF 2 OF 22
DESCRIPTION FLOOR PLAN LEGEND					DATE 5/9/2012	NEXT WIRE NO.	DRAWN BY Ben Komar




Home Control Works
Commercial / Residential
AV Control Systems
606 Western Ave
Joliet, IL 60435
630-828-8097



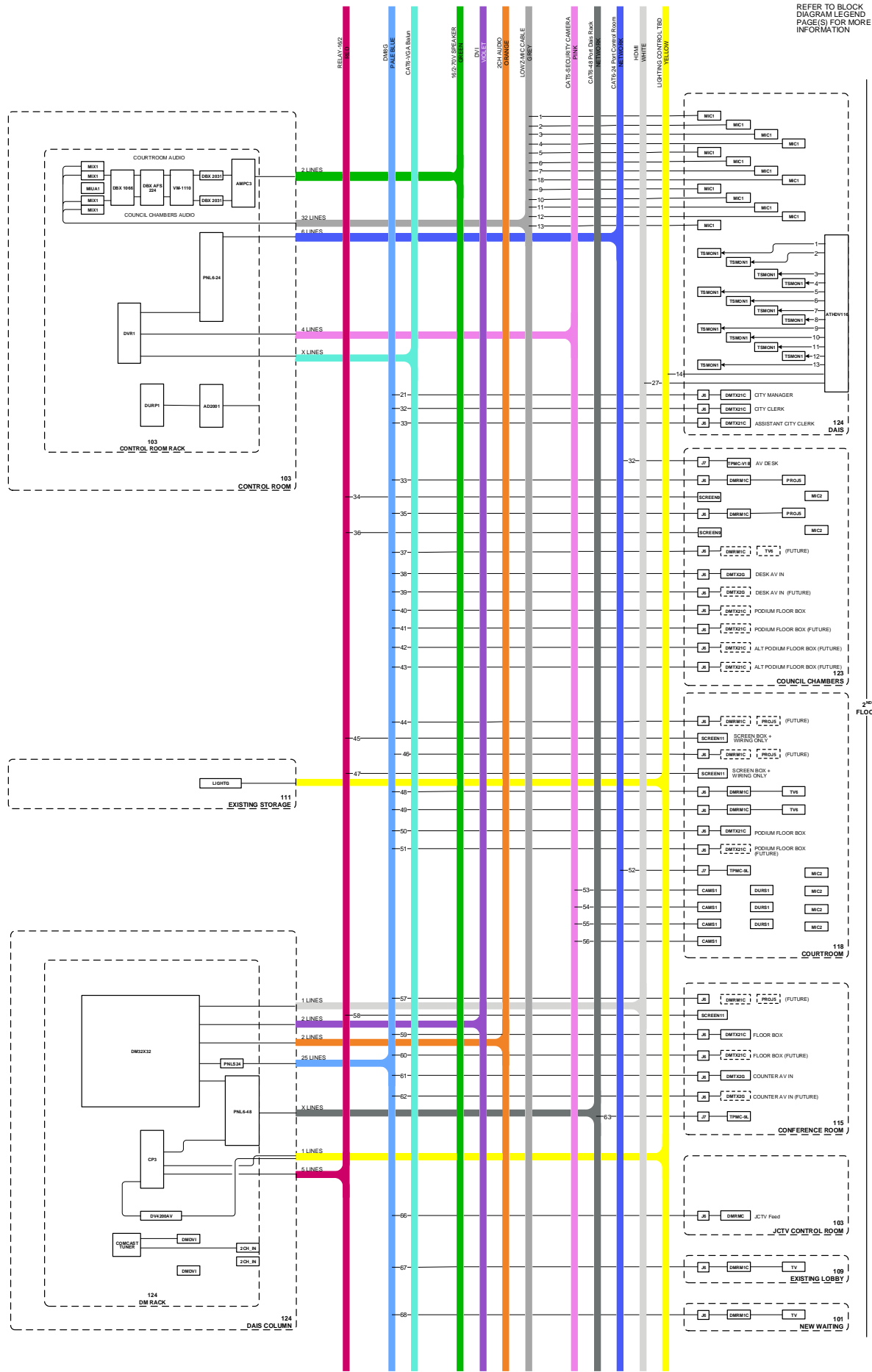
TITL F	REV.	REVISION DESCRIPTION	DATE	BY	REVISED	SCALE	PAGE	 Home Control Works Commercial / Residential AV Control Systems 606 Western Ave Joliet, IL 60435 630-828-8097
CITY OF JOLIET COUNCIL CHAMBERS AV DESIGN					12/13/2012	NONE	3 OF 22	
DESCRIPTION					DATE	LAST WIRE NO.	DRAWN BY	
FLOOR PLAN (TYPE 1) PG. 1					5/9/2012		Ben Komar	

Block Diagram Device Legend


LABEL	Item	Item Description	Quantity
2CH_IN	Audio in for Crestron DMC-DVI	Audio in for Crestron DMC-DVI	2
AMPC1	DuKane Model# 1A4060	Commercial Power Amplifier, Open frame, 60 WATT, 70v distribution	1
AMPC2	Crown 1160A	Commercial Power Amplifier, Open frame, 160 WATT, 70v distribution	1
CAMS1	SS-Black Security Camera	#BLK-CCP141VH, Indoor / Outdoor speed Dome PTZ Camera	8
CP3	Crestron CP3	Crestron Processor	1
DBX2031	DBX2031 Single Ch 31 Band Eq	Single Channel 31 Band Equalizer / Limiter with Type III Noise Reduction	2
DBX AFS 224	DBX AFS 224 Feedback Proc	Advanced Feedback Suppression processor	2
DM32X32	Crestron DM-MD32X32	32X32 Digital Media Matrix Switcher	1
DMDVI	Crestron DMC-DVI	DigitalMedia Card DVI Digital, 2CH Audio, RGB/Component Inputs	2
DMRM1C	Crestron DM-RMC-100-C	Digital Media 8G+ Receiver and Room Controller 100	10
DMRMC	Crestron DM-RMC-100	Digital Media Room Box for DM Cable	1
DMTX21C	Crestron DM-TX-201-C	Digital Media 8G+ Transmitter 201	8
DMTX2G	Crestron DM-TX-200-C-2G-B-T	Wall Plate Digital Media 8G+ Transmitter 200, Black	4
DURP1	CISCOR Master Receiver	CISCOR Master Receiver, up to 16 wireless supervised transmitters	1
DURS1	CISCOR DS1233S Wireless Panic	CISCOR DS1233S Wireless Panic Button	3
DVR1	SS-Black Security DVR	#DH200800DH, H.264 8 Camera, DVDRW, 1TB SATA SV35.3	1
J2	Leviton 5G108-BI5	GigaMax 5e QuickPort Connector	3
J6	L-Com MJS110C5E-S	Shielded Category 5E Keystone Jack, 110 / RJ45 (8x8) 568A/B	23
J7	SnapAV RJ45-CAT6-WH	WirePath™ UL certified RJ45 Keystone Insert - Cat6 Rated	22
LIGHTG	Lighting System	See Lighting System Details	1
MIC1	Shure MX418S	Microflex Condenser, Mute switch with LED, shock mounted	13
MIC2	Shure ULPX24/58	Wireless ULX2/58 Handheld Transmitter with SM58 Microphone	6
MUA1	Shure UA844SWB	Wideband UHF Four-Way Active Antenna Splitter	1
MIX1	Shure SCM810	Eight-Channel Automatic Mixer with Logic Control and EQ per Channel	4
PNL6-24	L-Com	CAT6 24-Port Patch Panel	1
PNL6-48	L-Com	CAT6 48-Port Patch Panel	1
PNLS24	L-COM DCP110C5E-24S	24 Port Shielded Category 5E Patch Panel	1
PROJ5	Digital Projection M-Vision C400	Cine 400 w/ 1.56 – 1.86:1 lens (111-148) 5500 ANSI Lumens	5
SCREEN11	Draper Access Screen V Tab	Case Only for Pre-Installation, length by projection screen size	3
SCREEN9	Draper Access Screen V Tab	12v relay, Matt White Gain = 1.0, Case Length: 142", 16:9 image 133" Diag	2
TPMC-9L	Crestron TPMC-9L	9" Wall Mount Touch Screen	2
TPMC-V1B	Crestron TPMC-V1B	12" Desk Mount Touch Screen	1
TSMON1	HPL2105TM	Touch Screen Monitor 21.5" TFT LCD VGA / DVI (HDCP) 1920 x 1080	13
TV	TV	Supplied by others	2
TV6	LG 60PG60	60" PDP 1080P HDTV	3
VDH1X16	Kramer VM-216H-NV	2X1:16 HDMI Distribution Amplifier	1

TITI F	REV.	REVISION DESCRIPTION	DATE	BY	REVISED	SCALE	PAGE	 Home Control Works Commercial / Residential AV Control Systems 606 Western Ave Joliet, IL 60435 630-828-8097
CITY OF JOLIET COUNCIL CHAMBERS AV DESIGN					12/13/2012	NONE	5 OF 22	
DESCRIPTION					DATE	NEXT WIRE NO.	DRAWN BY	
BLOCK DIAGRAM DEVICE LEGEND					5/9/2012		Ben Komar	

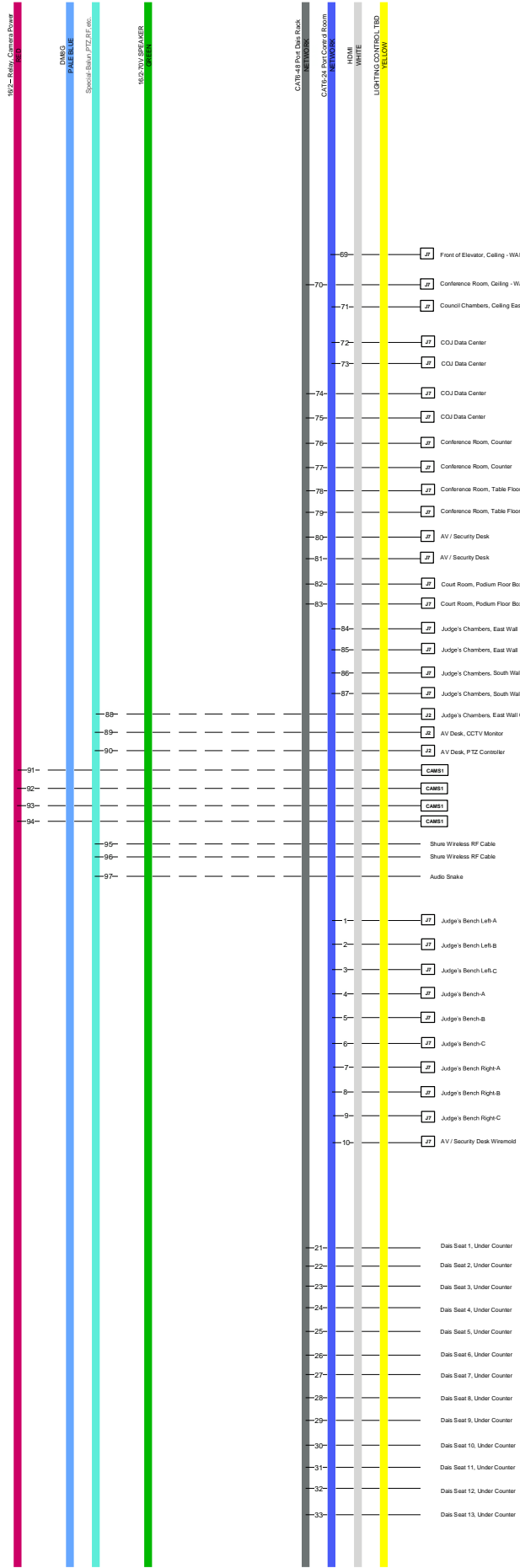
REFER TO BLOCK
DIAGRAM LEGEND
PAGE(S) FOR MORE
INFORMATION




CONTINUED ON NEXT PAGE

TITI F CITY OF JOLIET COUNCIL CHAMBERS AV DESIGN	REV.	REVISION DESCRIPTION	DATE	BY	REVISED	SCALE	PAGE	 Home Control Works Commercial / Residential AV Control Systems 606 Western Ave Joliet, IL 60435 630-828-8097
					12/13/2012	NONE	6 OF 22	
DESCRIPTION					DATE	NEXT WIRE NO.	DRAWN BY	
SYSTEM BLOCK DIAGRAM PG. 1					5/9/2012	98	Ben Komar	

REFER TO BLOCK
DIAGRAM LEGEND
PAGE(S) FOR MORE
INFORMATION



CONTINUED ON NEXT PAGE

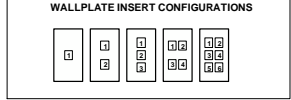
TITI F CITY OF JOLIET COUNCIL CHAMBERS AV DESIGN	REV.	REVISION DESCRIPTION	DATE	BY	REVISED	SICAJ F	PAGF	 Home Control Works Commercial / Residential AV Control Systems 606 Western Ave Joliet, IL 60435 630-828-8097
					12/13/2012	NONE	7 OF 22	
DESCRIPTION					DATE	NEXT WIRE NO.	DRAWN BY	
SYSTEM BLOCK DIAGRAM PG. 2					5/9/2012	98	Ben Komar	

TERMINATIONS AND ADAPTERS

LABEL NO.	TYPE	DETAILS	TERMINAL CONNECTIONS				E	F	G	H
			A	B	C	D				
0	NO TERMINATION									
1	1-RCA		BLK / WHT-L RED-R	YEL-V						
2	2-RCA		GRN-Y BLU-Pb RED-FY	YEL-V WHT-L RED-R						
3	3-RCA		GRN-Y BLU-Pb RED-FY	YEL-V WHT-L RED-R						
4	MULTIPLE-RCA	REFER TO DETAILS	RED-R GRN-G BLU-B WHT-S	RED-FL GRN-C BLU-FB WHT-SUB	YEL-SL WHT-SR ORIG-SBL VOL-SBR					
5	5-RCA		RED-R GRN-G BLU-B YEL-H WHT-V							
6	F-CONN.		BLK							
7	TOSLINK		BLK							
8	HDMI		BLK							
9	RJ11 MALE		3-RED-PAIR1 R 4-GRN-PAIR1 T	2-BLK-PAIR1 T 3-RED-PAIR1 R 4-GRN-PAIR1 T 5-YEL-PAIR2 R	1-WHT-PAIR3 T 2-BLK-PAIR2 T 3-RED-PAIR1 R 4-GRN-PAIR1 T 5-NC-PAIR2 R 6-BLU-PAIR3 R	1-NC-CTS 2-GRN-G 3-BLK-RX 4-ORGWHT-TX 5-NC-RTS 6-NC-NC	1-WHT-+24V 2-BLK-+24V 3-RED-Y 4-GRN-Z 5-YEL-GND 6-BLU-GND			
10	RJ45 MALE		1-GRNWHT-PAIR1 T 2-ORGWHT-PAIR2 R 3-ORGWHT-PAIR2 T 4-BLU-PAIR1 R 5-BLUWHT-PAIR1 T 6-GRN-PAIR2 R 7-BRNWHT-PAIR4 T 8-BRN-PAIR4 R	1-ORGWHT-PAIR1 T 2-ORGWHT-PAIR2 R 3-GRNWHT-PAIR2 T 4-BLU-PAIR1 R 5-BLUWHT-PAIR1 T 6-GRN-PAIR2 R 7-BRNWHT-PAIR4 T 8-BRN-PAIR4 R						
11	DB9 MALE		REAR VIEW 1-BLU-TX 2-BLU-RX 3-ORGWHT-RX 4-NC 5-GRN-GND 6-NC 7-NC 8-NC 9-NC	CATS 1-NC 2-ORGWHT-TX 3-BLU-RX 4-NC 5-GRN-GND 6-NC 7-NC 8-NC 9-NC	CATS 1-NC 2-ORGWHT-TX 3-BLU-RX 4-NC 5-GRN-GND 6-NC 7-GRNWHT-CTS 8-BRN-RTS 9-NC	CATS 1-NC 2-ORGWHT-TX 3-BLU-RX 4-GRN-GND 5-NC 6-NC 7-BRN-CTS 8-GRNWHT-RTS 9-NC	CATS 1-NC 2-RED-TX 3-BRN-RX 4-NC 5-BLK-GND 6-NC 7-YEL-CTS 8-WHT-RTS 9-NC			
12	DB9 FEMALE		REAR VIEW 1-NC 2-BLU-TX 3-ORGWHT-RX 4-NC 5-GRN-GND 6-NC 7-NC 8-NC 9-NC	CATS 1-NC 2-ORGWHT-TX 3-BLU-RX 4-NC 5-GRN-GND 6-NC 7-NC 8-NC 9-NC	CATS 1-NC 2-ORGWHT-TX 3-BLU-RX 4-NC 5-GRN-GND 6-NC 7-GRNWHT-RTS 8-BRN-CTS 9-NC	CATS 1-NC 2-ORGWHT-TX 3-BLU-RX 4-GRN-GND 5-NC 6-NC 7-BRN-RTS 8-GRNWHT-CTS 9-NC				
13	TERMINAL BLOCK TO DB9 MALE ADAPTER		1-BLU-NC 2-BLU-TX 3-ORGWHT-RX 4-NC 5-GRN-GND 6-NC 7-NC 8-NC 9-NC	CATS 1-NC 2-ORGWHT-TX 3-BLU-RX 4-NC 5-GRN-GND 6-NC 7-NC 8-NC 9-NC	CATS 1-NC 2-ORGWHT-TX 3-BLU-RX 4-NC 5-GRN-GND 6-NC 7-GRNWHT-CTS 8-BRN-RTS 9-NC	CATS 1-NC 2-ORGWHT-TX 3-BLU-RX 4-GRN-GND 5-NC 6-NC 7-BRN-CTS 8-GRNWHT-RTS 9-NC				
14	TERMINAL BLOCK TO DB9 FEMALE ADAPTER		1-NC 2-BLU-TX 3-ORGWHT-RX 4-NC 5-GRN-GND 6-NC 7-NC 8-NC 9-NC	CATS 1-NC 2-ORGWHT-TX 3-BLU-RX 4-NC 5-GRN-GND 6-NC 7-NC 8-NC 9-NC	CATS 1-NC 2-ORGWHT-TX 3-BLU-RX 4-NC 5-GRN-GND 6-NC 7-GRNWHT-RTS 8-BRN-CTS 9-NC	CATS 1-NC 2-ORGWHT-TX 3-BLU-RX 4-GRN-GND 5-NC 6-NC 7-BRN-RTS 8-GRNWHT-CTS 9-NC				
15	RJ45 TO DB9 MALE ADAPTER		REAR VIEW 1-WHT-GRN 2-YEL-GRN 3-RED-GRN 4-BLK-GRN 5-BLU	DB9 MALE 1-NC 2-BLU-TX 3-RED-RX 4-NC 5-ORGWHT-GND 6-NC 7-NC 8-NC 9-NC	DB9 FEMALE 1-NC 2-RED-TX 3-BLU-RX 4-NC 5-ORGWHT-GND 6-NC 7-NC 8-NC 9-NC					
16	RJ45 TO DB9 FEMALE ADAPTER		REAR VIEW 1-WHT-GRN 2-YEL-GRN 3-RED-GRN 4-BLK-GRN 5-BLU	DB9 FEMALE 1-NC 2-BLU-TX 3-RED-RX 4-NC 5-ORGWHT-GND 6-NC 7-NC 8-NC 9-NC	DB9 MALE 1-NC 2-RED-TX 3-BLU-RX 4-NC 5-ORGWHT-GND 6-NC 7-NC 8-NC 9-NC					
17	110 IDC PUNCH DOWN BLOCK	REFER TO CONNECTOR'S 110 WIRING DOCUMENTATION	S88A 1-GRNWHT-PAIR 3T 2-GRN-PAIR 3R 3-ORGWHT-PAIR 2T 4-BLU-PAIR 1R 5-BLUWHT-PAIR 1T 6-ORGWHT-PAIR 2R 7-BRNWHT-PAIR 4T 8-BRN-PAIR 4R	S88B 1-ORGWHT-PAIR 2T 2-ORGWHT-PAIR 2R 3-GRNWHT-PAIR 3T 4-BLU-PAIR 1R 5-BLUWHT-PAIR 1T 6-GRN-PAIR 2R 7-BRNWHT-PAIR 4T 8-BRN-PAIR 4R	RCA 1 1-BLU-RCA-L 2-BLUWHT-RCA-L 3-GRN-RCA-L 4-ORGWHT-RCA-L 5-GRN-RCA-R 6-GRNWHT-RCA-R 7-BRN-RCA-R 8-BRNWHT-RCA-R	RCA 2 1-BLU-RCA-L 2-BLUWHT-RCA-L 3-GRN-RCA-L 4-ORGWHT-RCA-L 5-GRN-RCA-R 6-GRNWHT-RCA-R 7-BRN-RCA-R 8-BRNWHT-RCA-R	RCA 3 1-BLU-RCA-L 2-BLUWHT-RCA-L 3-GRN-RCA-L 4-ORGWHT-RCA-L 5-GRN-RCA-R 6-GRNWHT-RCA-R 7-BRN-RCA-R 8-BRNWHT-RCA-R	RCA 4 1-BLU-RCA-L 2-BLUWHT-RCA-L 3-GRN-RCA-L 4-ORGWHT-RCA-L 5-GRN-RCA-R 6-GRNWHT-RCA-R 7-BRN-RCA-R 8-BRNWHT-RCA-R		
18										
19										
20										
21	BARE-END 1-COND.									
22	BARE-END 2-COND.									
23	BARE-END 3-COND.									
24	BARE-END 4-COND.									
25	BARE-END 5-COND.									
26	BARE-END MULT-COND.	REFER TO DETAILS	RED-R BLK-C RED-RH RED-RC GRN-G YEL-V L-BLU-12 ORGWHT-12 DK BLU-B WHT-W BRN-W2	RED-R BLK-C RED-RH RED-RC GRN-G YEL-V L-BLU-12 ORGWHT-12 DK BLU-B WHT-W BRN-W2	RED-R BLK-C RED-RH RED-RC GRN-G YEL-V L-BLU-12 ORGWHT-12 DK BLU-B WHT-W BRN-W2	RED-R BLK-C RED-RH RED-RC GRN-G YEL-V L-BLU-12 ORGWHT-12 DK BLU-B WHT-W BRN-W2				
27	SPARE									
28	2-BANANA		WHT-L GRN-L	RED-R BLK-R	RED-+ BLK-	RED-WHT-+ BLK-				
29	4-BANANA		WHT-L GRN-L RED-R BLK-R	RED-R BLK-R	RED-+ BLK-	RED-WHT-+ BLK-				
30	1-DUAL BANANA		WHT-L GRN-L	RED-R BLK-R	RED-+ BLK-	RED-WHT-+ BLK-				
31	2-DUAL BANANA		WHT-L GRN-L RED-R BLK-R	RED-R BLK-R	RED-+ BLK-	RED-WHT-+ BLK-				
32	3.9MM 2-COND. TERMINAL BLOCK		RED-+ BLK-	RED-S BLK-	COLOR-RLY COLOR-RLY					
33	3.9MM 3-COND. TERMINAL BLOCK		RED-WHT-+ BLK-G SHIELD-GND	RED-WHT-L BLK-G SHIELD-R	RED-WHT-1 BLK-2 SHIELD-C	SHIELD-G BLK-TX RED-WHT-RX	RED-E I BLK-G	JUMPER I G	COLOR-DATA COLOR-V COLOR-GND	
34	3.9MM 4-COND. TERMINAL BLOCK		WHT-L GRN-L RED-R BLK-R	RED-24 WHT-Y BLU-Z BLK-G	RED-24 WHT-A BLU-B BLK-G	COLOR-S1 COLOR-S1 COLOR-S2 COLOR-S2	COLOR-RLY1 COLOR-RLY1 COLOR-RLY2 COLOR-RLY2	COLOR-RLY1 COLOR-RLY1 COLOR-RLY2 COLOR-RLY2	RIDGESTRIP-24 NC G	
35	3.9MM 5-COND. TERMINAL BLOCK		WHT-L BLK-L SHIELDS-GND RED-R BLK-R	WHT-L BLK-L SHIELDS-GND RED-R BLK-R	WHT-L BLK-L SHIELDS-GND RED-R BLK-R	COLOR-GND COLOR-TX COLOR-RTS COLOR-CTS	COLOR-C SHLD-S S S +	COLOR-C SHLD-S S S +		
36	3.9MM 8-COND. TERMINAL BLOCK		CATS BLUWHT-15 ORGWHT-26 GRN-37 GRNWHT-37 BRN-48 BRNWHT-48	CATS BLUWHT-15 ORGWHT-26 GRN-37 GRNWHT-37 BRN-48 BRNWHT-48	CATS BLUWHT-15 ORGWHT-26 GRN-37 GRNWHT-37 BRN-48 BRNWHT-48	COLOR-RLY1 COLOR-RLY1 COLOR-RLY2 COLOR-RLY2 COLOR-RLY3 COLOR-RLY3 COLOR-RLY4 COLOR-RLY4	COLOR-RLY1 COLOR-RLY1 COLOR-RLY2 COLOR-RLY2 COLOR-RLY3 COLOR-RLY3 COLOR-RLY4 COLOR-RLY4			

TERMINATIONS AND ADAPTERS				TERMINATIONS AND ADAPTERS					
LABEL NO.	TYPE	DETAILS			LABEL NO.	TYPE	DETAILS		
		A	B	C			A	B	C
37	3.5MM 9-COND. TERMINAL BLOCK	1---WHIT---L+ 2---GRN---L- 3---RED---R+ 4---BLK---R- 5---WHIT---L+ 6---GRN---L- 7---RED---R+ 8---BLK---R- 9---COLOR---C			81	DIM/DMMNET (2/R45 MALE + 3.5MM 4-COND. TERMINAL BLOCK)	SEE 100---BLU---D SEE 100---ORG---M RED---24 DMNET---A GRY---B BLK---D	SEE 100---BLU---D SEE 100---ORG---M	
38	5MM 2-COND. TERMINAL BLOCK	RED---S BLK---G	RED---S BLK---G		82	2-SC FIBER MALE	BLU---D GRN---M		
39	5MM TWO 2-COND. TERMINAL BLOCK	WHIT---L+ GRN---L- RED---R+ BLK---R-			83	1-SC FIBER MALE	BLU---DM		
40	5MM 4-COND. TERMINAL BLOCK	WHIT---L+ RED---R+ GRN---L- BLK---R-	RED---24 WHIT---IN BLK---IN RED---OUT BLK---OUT		84	IR EMITTER	IR EMITTER WITH WIRE	WHITORG---STRIPE ORG---	
41	5MM 5-COND. TERMINAL BLOCK	WHIT---L+ BLK---L- SHIELD---GND RED---R+ BLK---R-	WHIT---L+ SHIELDS NC RED---R+ BLK---R-	WHIT---L+ L-NC BLK---GND RED---R+ R-NC	85	F FEMALE TO SMB FEMALE			
42	5MM 9-COND. TERMINAL BLOCK	1---WHIT---L+ 2---GRN---L- 3---RED---R+ 4---BLK---R- 5---WHIT---L+ 6---GRN---L- 7---RED---R+ 8---BLK---R- 9---COLOR---C			86	SPEAKON 4-COND. CABLE MOUNT	1---BLK---SPK+ 1---WHIT---SPK- 2---RED---NC 2---GRN---NC	1---BLK---LOW SPK+ 1---WHIT---LOW SPK- 2---RED---H SPK+ 2---GRN---H SPK-	
43	5MM 16-COND. TERMINAL BLOCK	1---WHIT---L+ 2---GRN---L- 3---RED---R+ 4---BLK---R- 5---WHIT---L+ 6---GRN---L- 7---RED---R+ 8---BLK---R- 9---COLOR---C 10---WHIT---L+ 11---GRN---L- 12---RED---R+ 13---BLK---R- 14---WHIT---L+ 15---GRN---L- 16---RED---R+ 17---BLK---R- 18---COLOR---C			87	SPEAKON 4-COND. COUPLER			
44	SPARE				88	SPADE LUGS 2-COND.	WHIT---L+ GRN---L- RED---R+ BLK---R-		
45	7.62MM 2-COND. TERMINAL BLOCK	WHIT---L+ GRN---L- RED---R+ BLK---R-	RED---R+ BLK---R-	RED---S BLK---G	89	SPADE LUGS 4-COND.	WHIT---L+ GRN---L- RED---R+ BLK---R-		
46	TWO 2-COND. TERMINAL BLOCK	WHIT---L+ GRN---L- RED---R+ BLK---R-			90	SPARE			
47	7.62MM 4-COND. TERMINAL BLOCK	WHIT---L+ GRN---L- RED---R+ BLK---R-			91	2.1MM COAXIAL POWER PLUG	SHIELD TIP RIDGE STRIPE SHIELD		
48	7.62MM 20 AMP 2-COND. T BLOCK	WHIT---L+ GRN---L- RED---R+ BLK---R-	RED---R+ BLK---R-		92	IEC C13 FEMALE			
49	7.62MM 20 AMP 4-COND. T BLOCK	WHIT---L+ GRN---L- RED---R+ BLK---R-			93	IEC C7 FEMALE			
50	SPARE				94	POWERCON	REAR VIEW G---GRN---GND H---WHIT---NEUT L---BLK---LOAD		
51	1-BNC MALE	BLK---VEL			95	NEMA 1-15 MALE			
52	2-BNC MALE	WHIT---Y RED---C			96	NEMA 5-15 MALE			
53	3-BNC MALE	GRN---Y BLU---PB RED---PH			97	NEMA 5-20 MALE			
54	5-BNC MALE	RED---R GRN---G BLU---B WHIT---S			98	ELECTRICAL JUNCTION BOX	REFER TO ELECTRICAL DOCUMENTATION		
55	5-BNC MALE	RED---R GRN---G BLU---B WHIT---S			40 CONT.	5MM 4-COND. TERMINAL BLOCK	D COLOR---+ COLOR---G COLOR---STATUS COLOR---SIGNAL		
56	2.9MM MINI 2-COND. TS MALE	SHIELD TIP RIDGE STRIPE SHIELD							
57	3.9MM MINI 3-COND. TRS MALE	SHIELD TIP RING RING SHIELD	TIP---BLK---+ RING---RED---- SHIELD---SHIELD---GND						
58	SPARE								
59	3.9MM MINI 2-COND. TS MALE	SHIELD TIP RIDGE STRIPE SHIELD							
60	3.9MM MINI 3-COND. TRS MALE	SHIELD TIP RING RING SHIELD	TIP---BLK---LEFT RING---RED---RIGHT RING---RED---GND SHIELD---SHIELD---GND	TIP---BLK---SIGNAL RING---RED---GND SHIELD---SHIELD---V+					
61	SPARE								
62	1/2 IN TS PHONE PLUG 2-COND. MALE	SHIELD TIP RIDGE STRIPE SHIELD							
63	1/2 IN TRS PHONE PLUG 3-COND. MALE	SHIELD TIP RING RING SHIELD	TIP---BLK---+ RING---RED---- SHIELD---SHIELD---GND						
64	4-PIN MINI-DIN MALE	REAR VIEW 1---SHIELD---(Y) GND 2---SHIELD---(C) GND 3---WHIT---Y 4---RED---C							
65	6-PIN MINI-DIN MALE	REAR VIEW 1---COLOR---TBD 2---COLOR---TBD 3---COLOR---TBD 4---COLOR---TBD 5---COLOR---TBD 6---COLOR---TBD							
66	8-PIN MINI-DIN MALE	REAR VIEW 1---BLU---BK 2---NC 3---NC 4---GRN---GND 5---NC 6---NC 7---WHITORG---TX 8---NC	1---COLOR---TBD 2---COLOR---TBD 3---COLOR---TBD 4---COLOR---TBD 5---COLOR---TBD 6---COLOR---TBD 7---COLOR---TBD 8---COLOR---TBD						
67	SPARE								
68	XLR 3-PIN MALE	REAR VIEW 1---SHIELD---GND 2---BLK---HOT + 3---WHITRED---COLD-		2 CONNECTORS					
69	XLR 3-PIN FEMALE	REAR VIEW 1---SHIELD---GND 2---BLK---HOT + 3---WHITRED---COLD-		2 CONNECTORS					
70	SPARE								
71	SPARE								
72	VGA MALE (HD15)	RGBHV SEE DOCUMENTATION	YPbPp SEE DOCUMENTATION						
73	VGA FEMALE (HD15)								
74	DVI MALE (HD15)	DVI-D	DVI-A	DVI-I					
75	1394	6-PIN	4-PIN						
76	DISPLAY-PORT								
77	USB	TYPE-A	TYPE-B						
78	RAM-LATCH MALE								
76	30-PIN MALE	IPOD							
80	SPARE								

TERMINATION AND ADAPTER DETAILS LEGEND
TERM. PIN NO. --- WIRE/CABLE --- COLOR --- FUNCTION



- GENERAL NOTES**
- DEVICES INDICATED IN *ITALICS* ARE SUPPLIED BY OTHERS
 - BOLD LINES INDICATE WIRES YET-TO-BE-RUN OR HEAD-END TO HEAD-END WIRES
 - NC = NO CONNECTION
 - ⊖ POWER PLUG CONNECTION REFERENCE AND WIRE LABEL
 - ⊕ POWER SOCKET CONNECTION REFERENCE AND WIRE LABEL
 - ◇ MISC CABLE REFERENCE
 - DEVICES WITH BROKEN LINES INDICATE FUTURE DEVICES