

Welcome



Secluded spaces feel unsafe



Level changes are inaccessible and create drainage problems



Fountain is unusable most of the year



Storefront visibility is blocked



Aerial Photo



» **2014-2015: Downtown Joliet Plan**

This plan identified the creation of a larger gathering space (larger than the existing Van Buren Street Plaza) as a priority action.

» **2017-2018: Property Acquisition**

The City prioritized the acquisition of the parcels on this block to ensure the future actualization of the much needed public space. The City acquired the last remaining property, the State’s Attorney’s Building at 105 N. Chicago Street in 2018. The City invested \$185,963 to have the State’s Attorney’s Building demolished and prepared for the future Square.

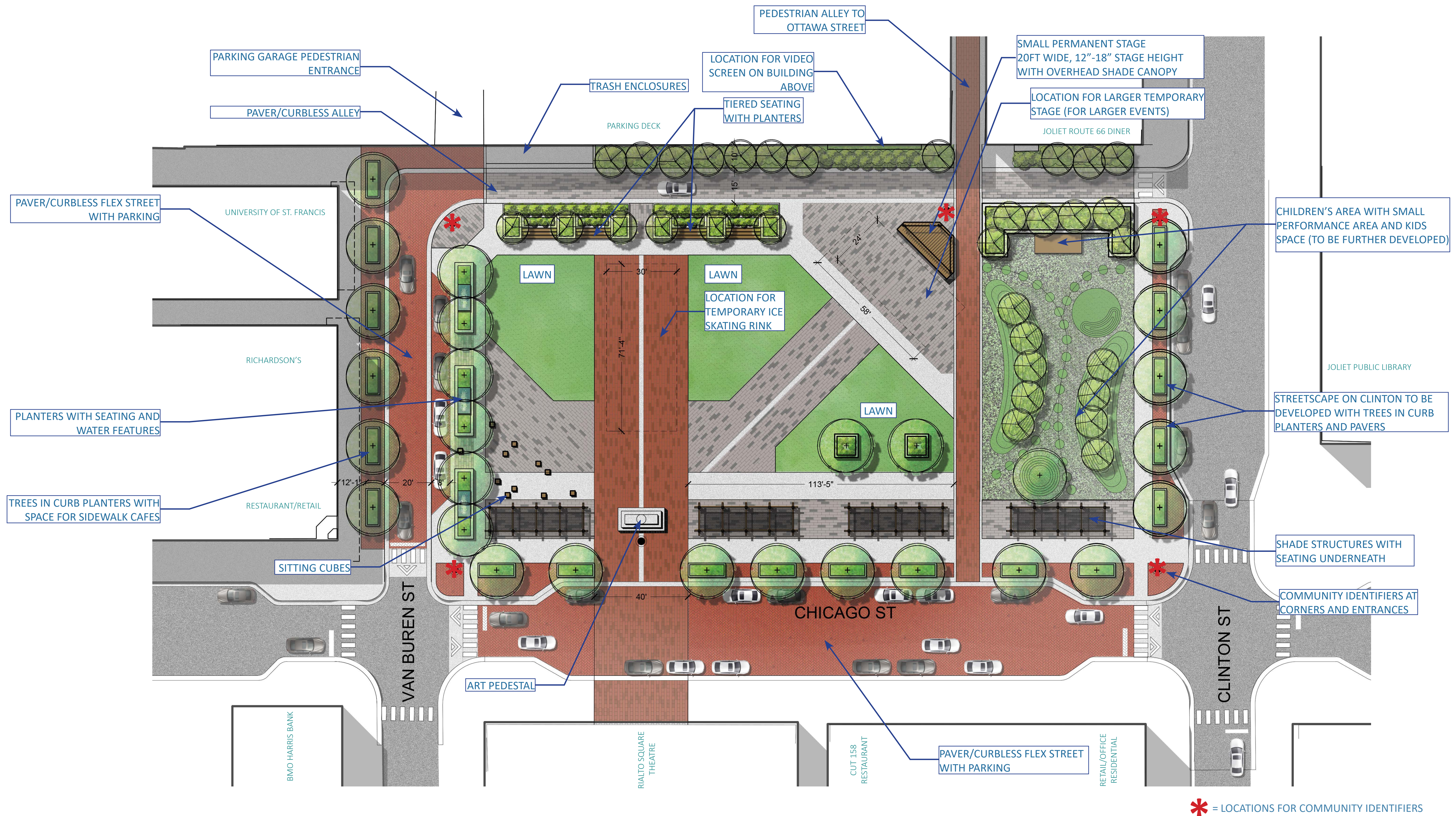
» **2017-2018: Chicago Street Corridor Plan**

The City of Joliet developed a high-level conceptual design for a new urban square across from the Rialto Square Theater and concepts for a redesigned Chicago Street. The concepts showcased in this plan were developed over a 14-month period with many working meetings with City staff and stakeholders, Advisory Committee meetings, and a public forum.

» **2022-2023: Joliet City Square Design Project**

The City of Joliet is refining concept designs and then developing construction plans for the City Square Project.





Option 1: plan Maximum open space for events and flexibility



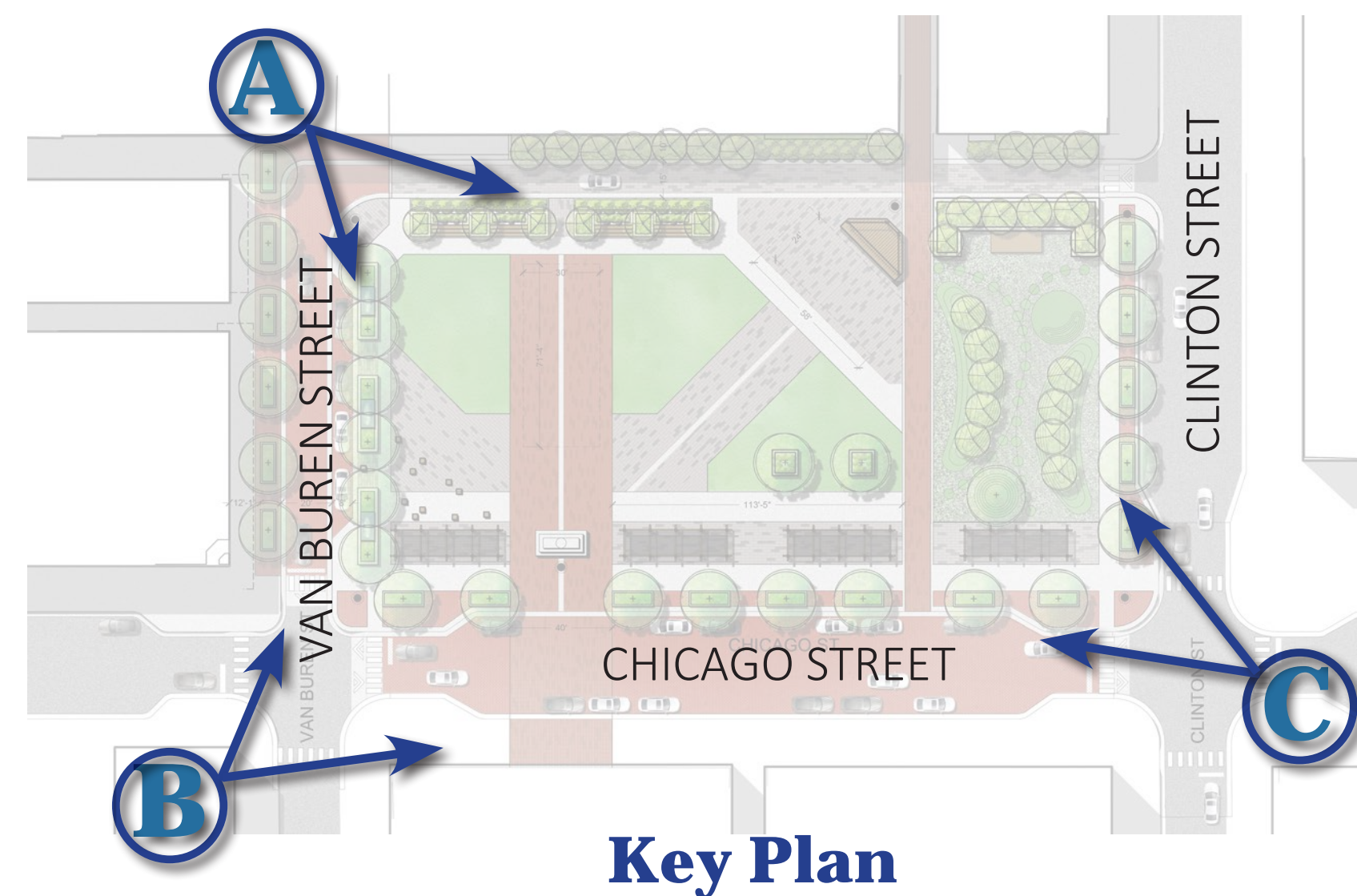
Option 1: View A sketch looking Northeast

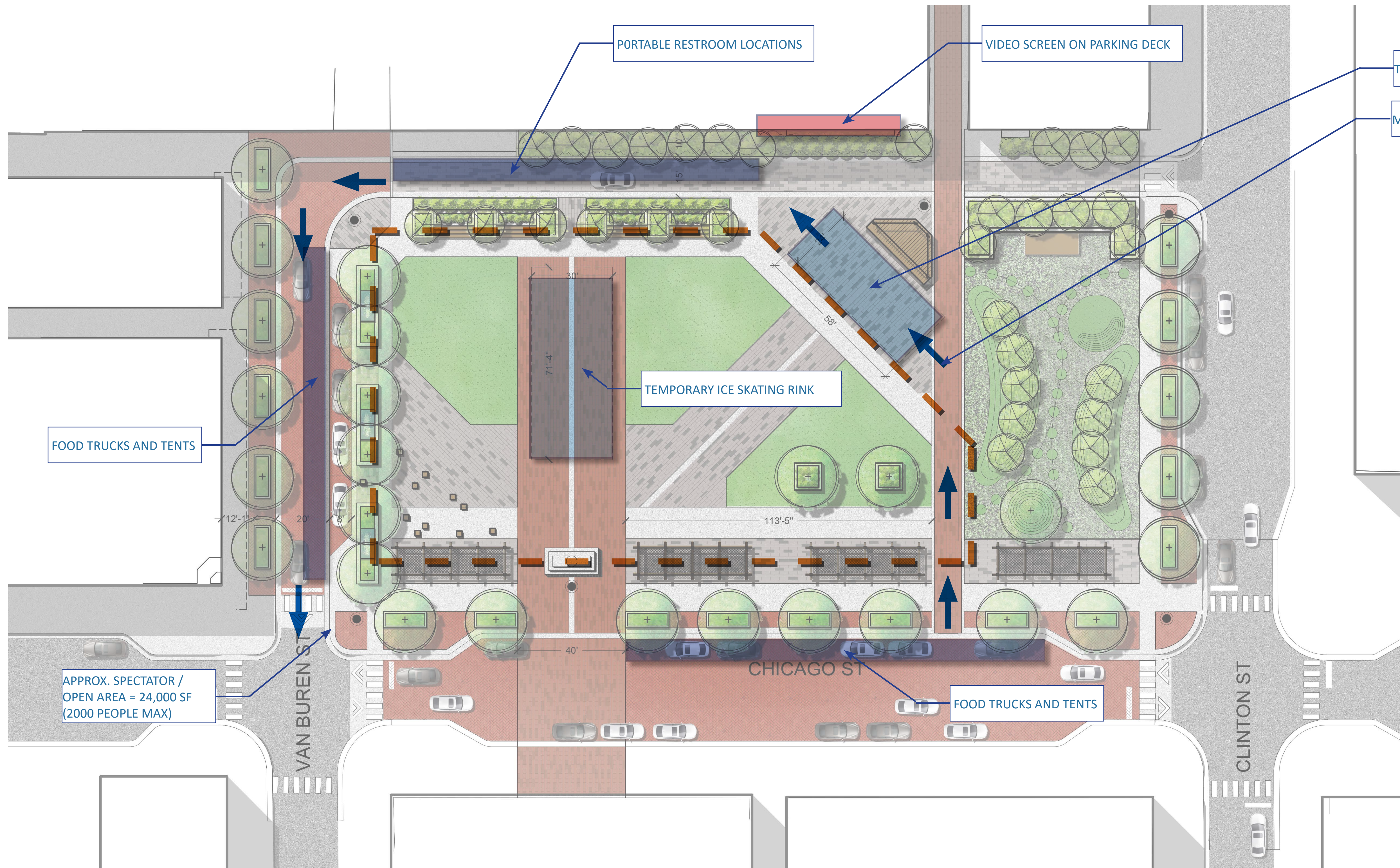


Option 1: View B sketch looking Northwest



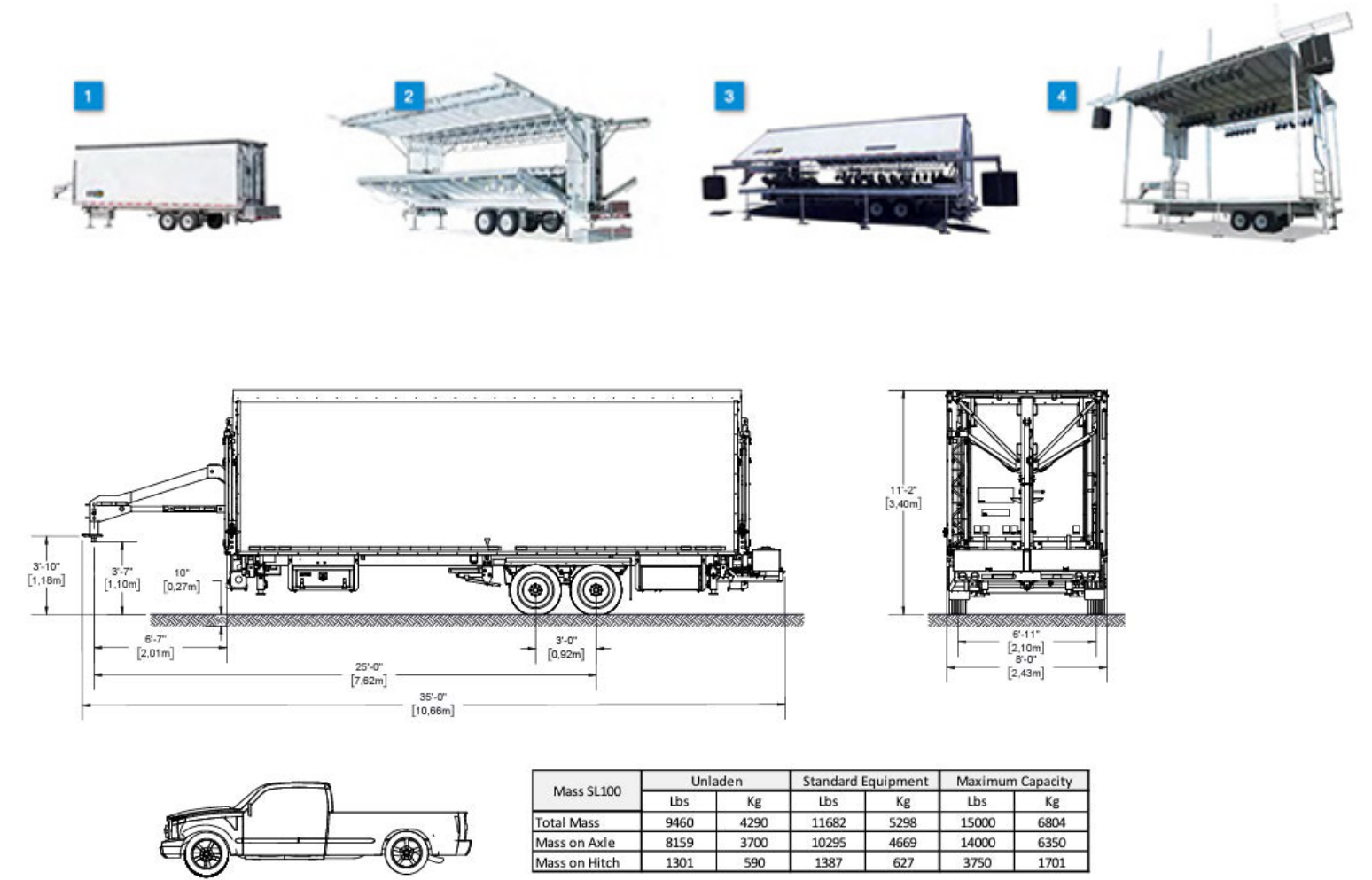
Option 1: View C sketch looking Southwest



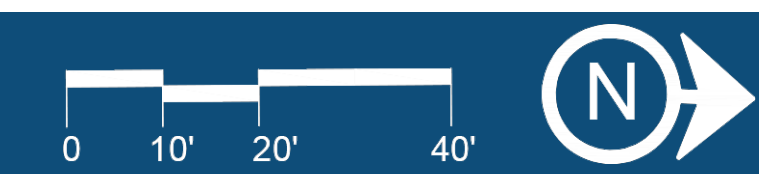


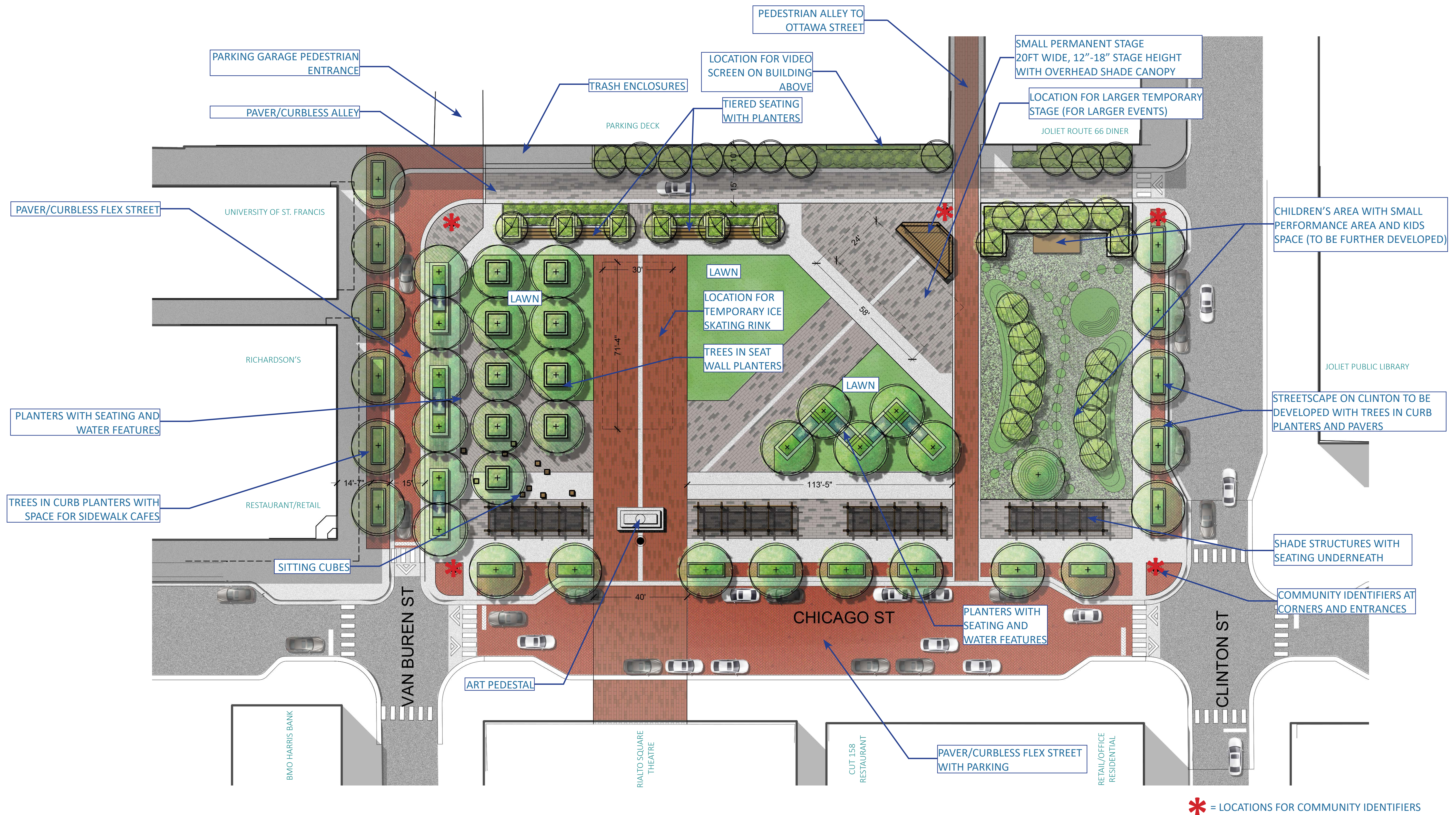
Why do we need space for a temporary stage?

The stageline SL-100 mobile stage is used for large music events in Joliet now. This mobile solution can have a high stage height (3'-6" to 4'-3") and support heavy lighting and sound equipment, along with banners. The features on this mobile stage make it well suited for larger music events, and would be difficult to design into a permanent stage.



Option 1: plan Maximum open space for events and flexibility



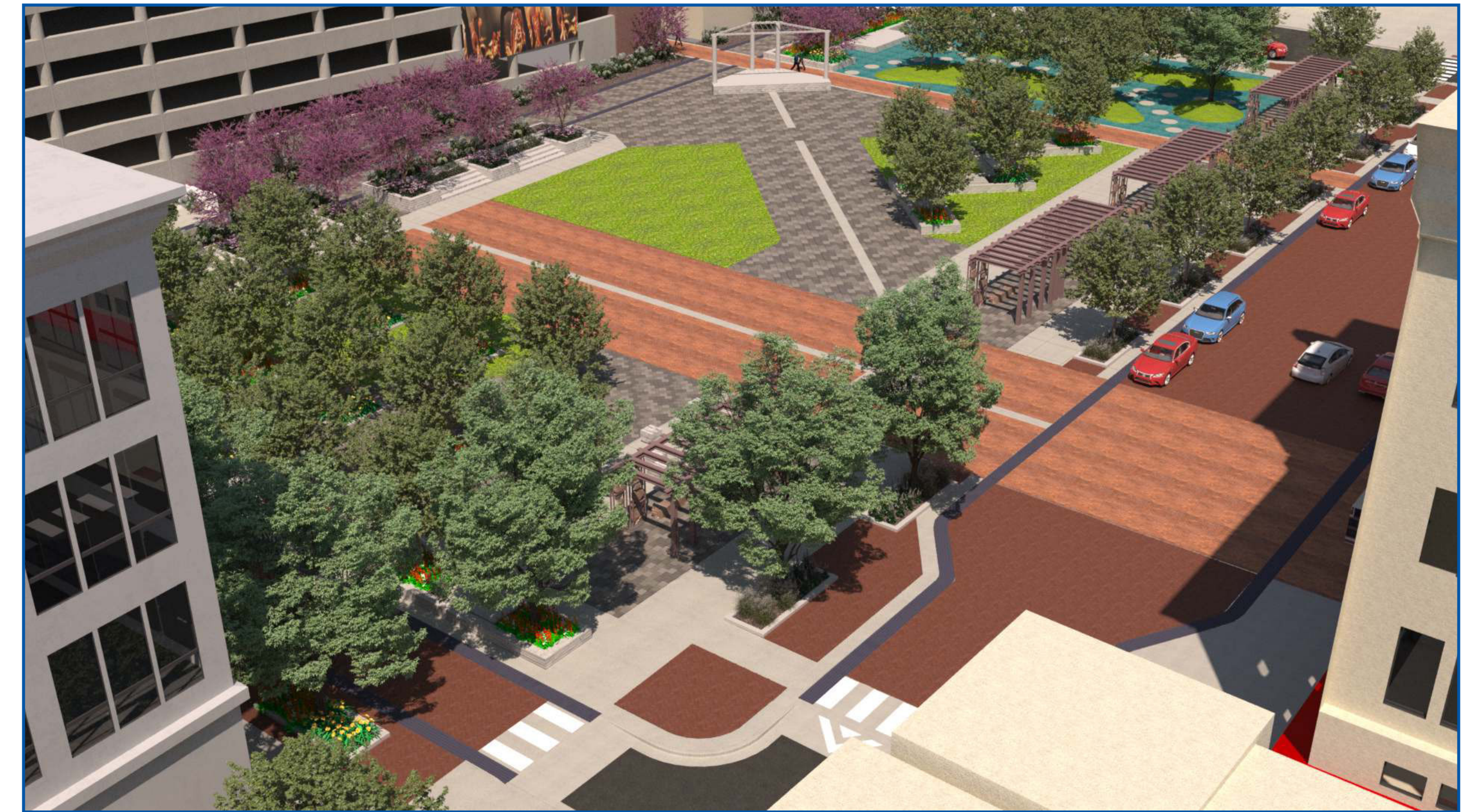


Option 2: plan increased trees, shade and seating





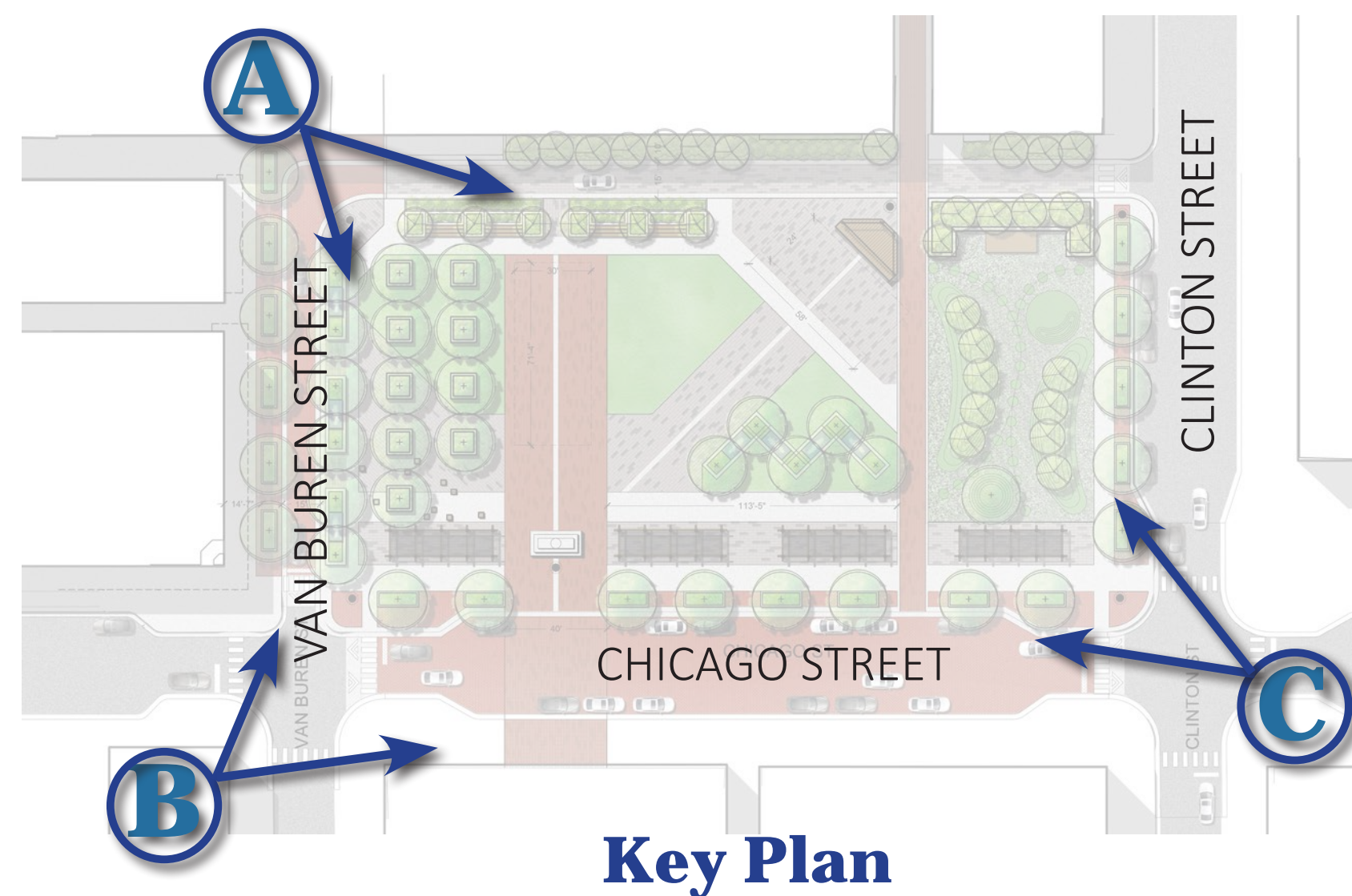
Option 2: View A sketch looking Northeast



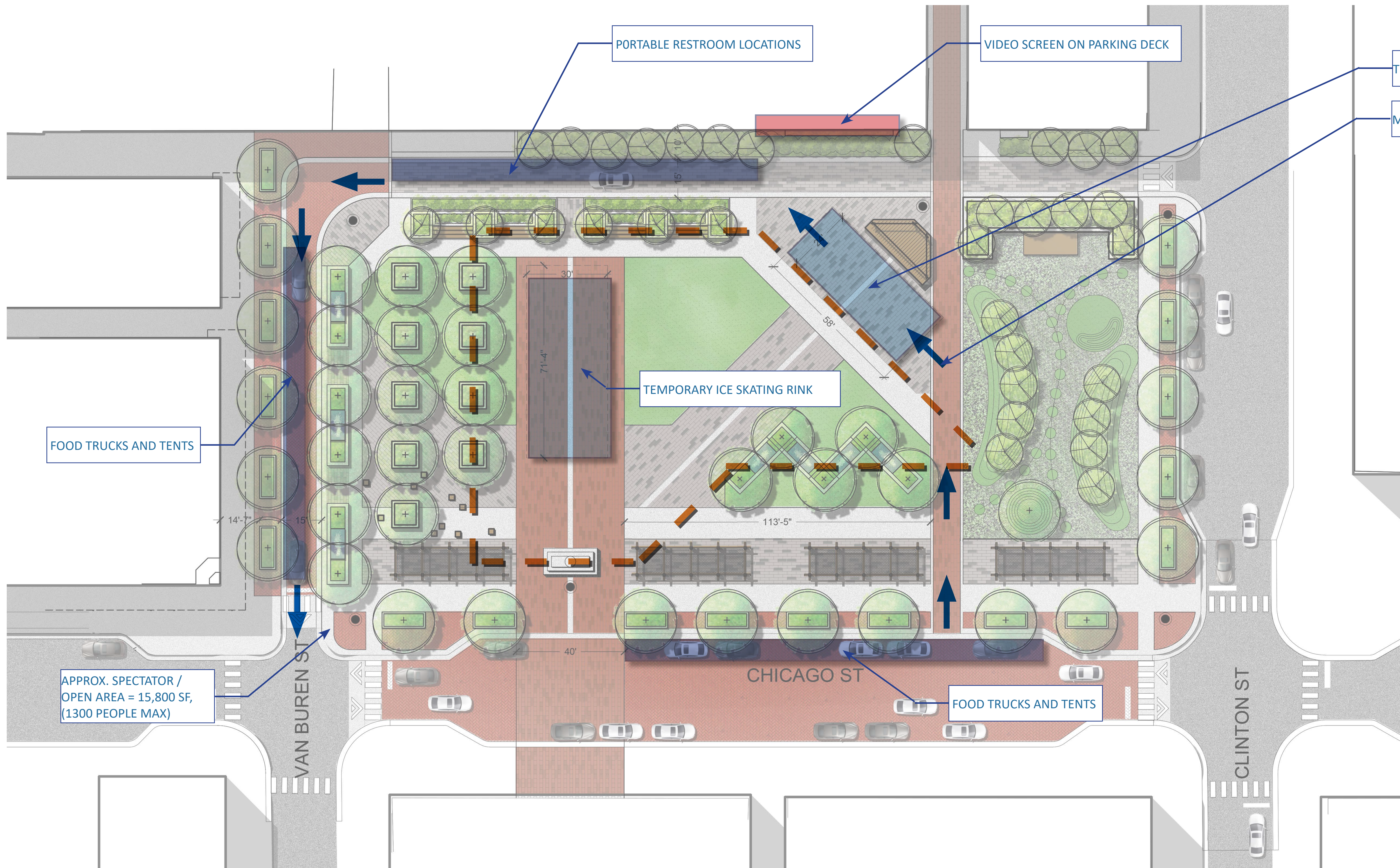
Option 2: View B sketch looking Northwest



Option 2: View C sketch looking Southwest

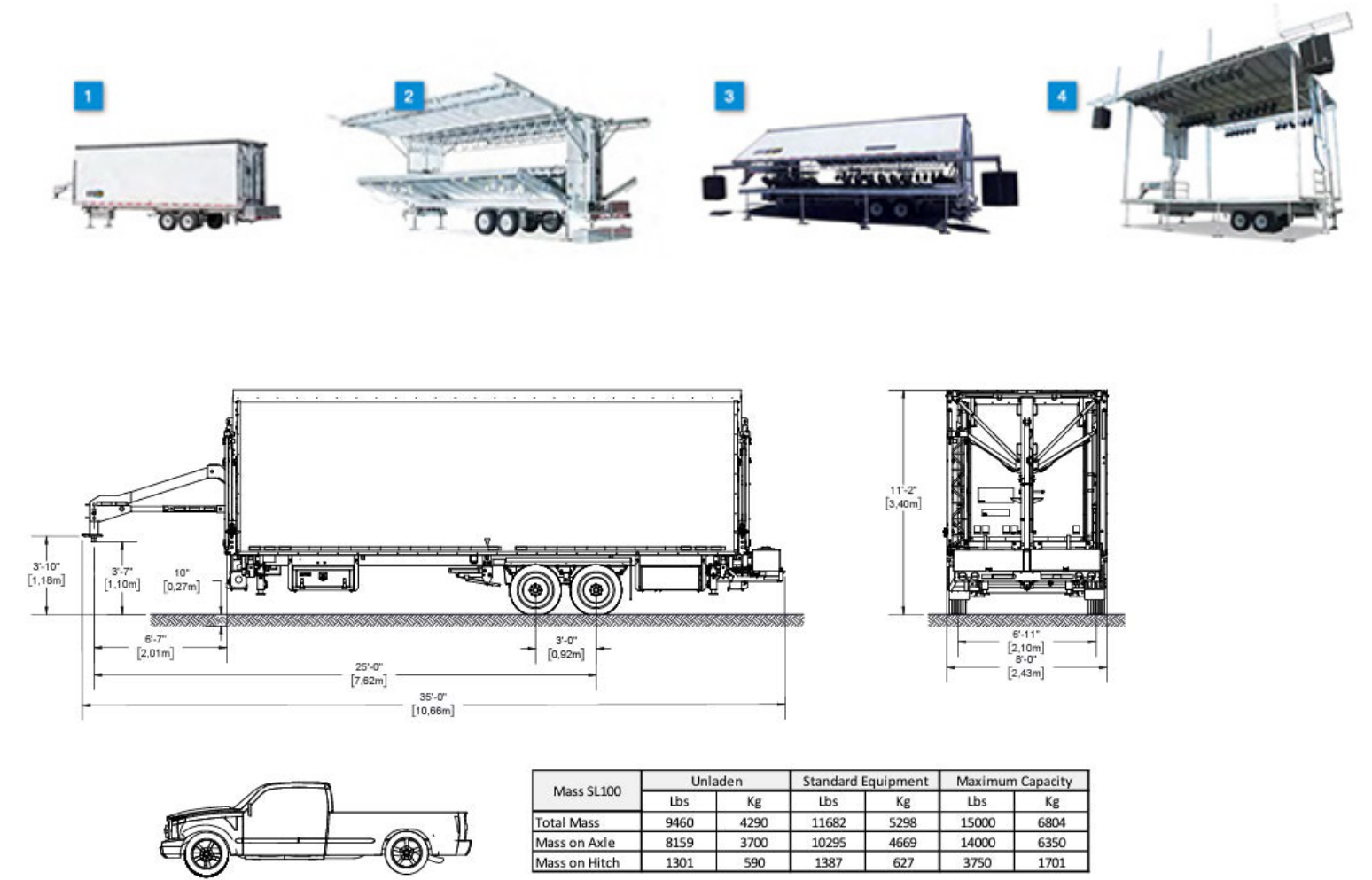


Option 2 Event Use



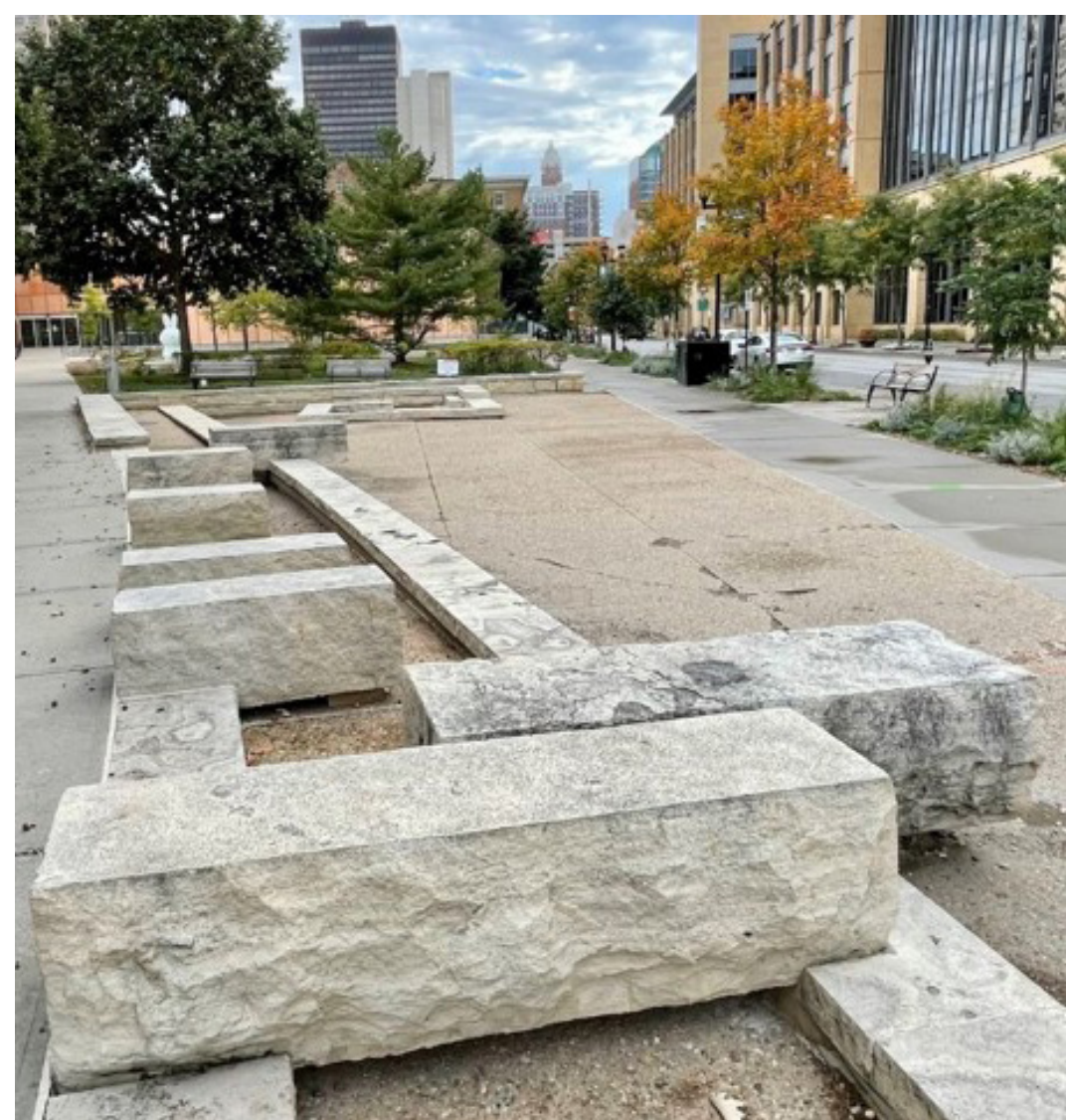
Why do we need space for a temporary stage?

The stageline SL-100 mobile stage is used for large music events in Joliet now. This mobile solution can have a high stage height (3'-6" to 4'-3") and support heavy lighting and sound equipment, along with banners. The features on this mobile stage make it well suited for larger music events, and would be difficult to design into a permanent stage.



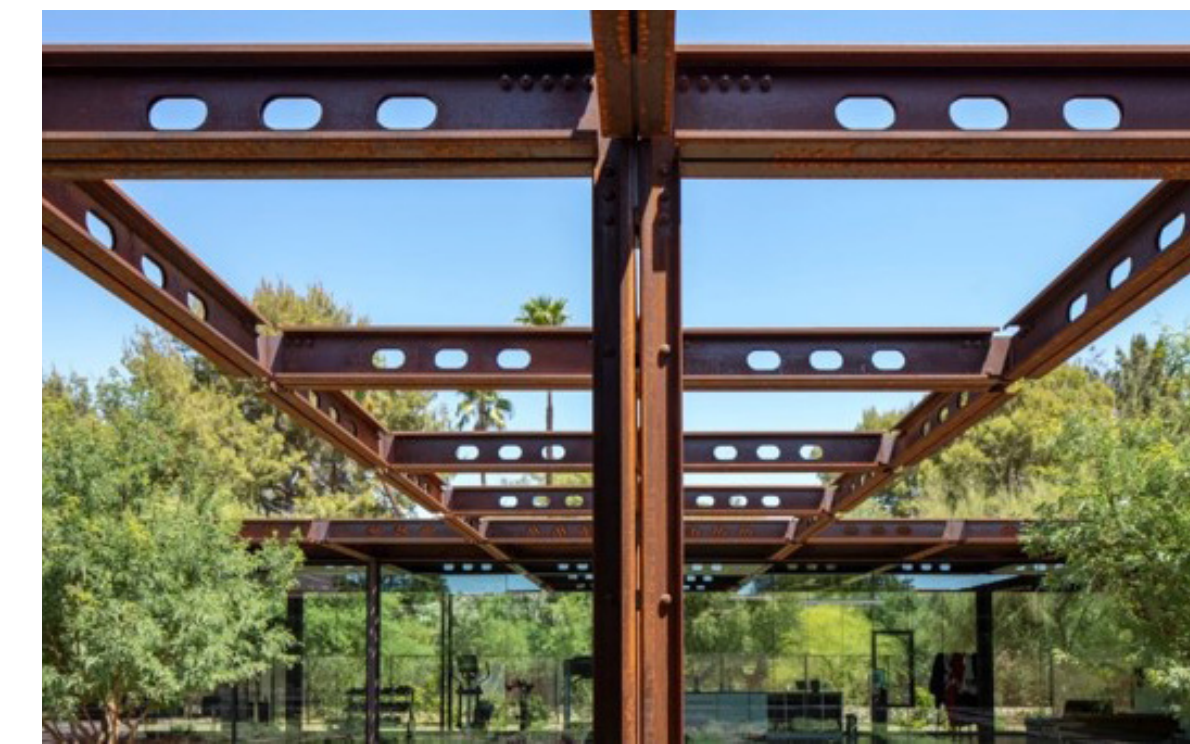
Option 2: plan increased trees, shade and seating

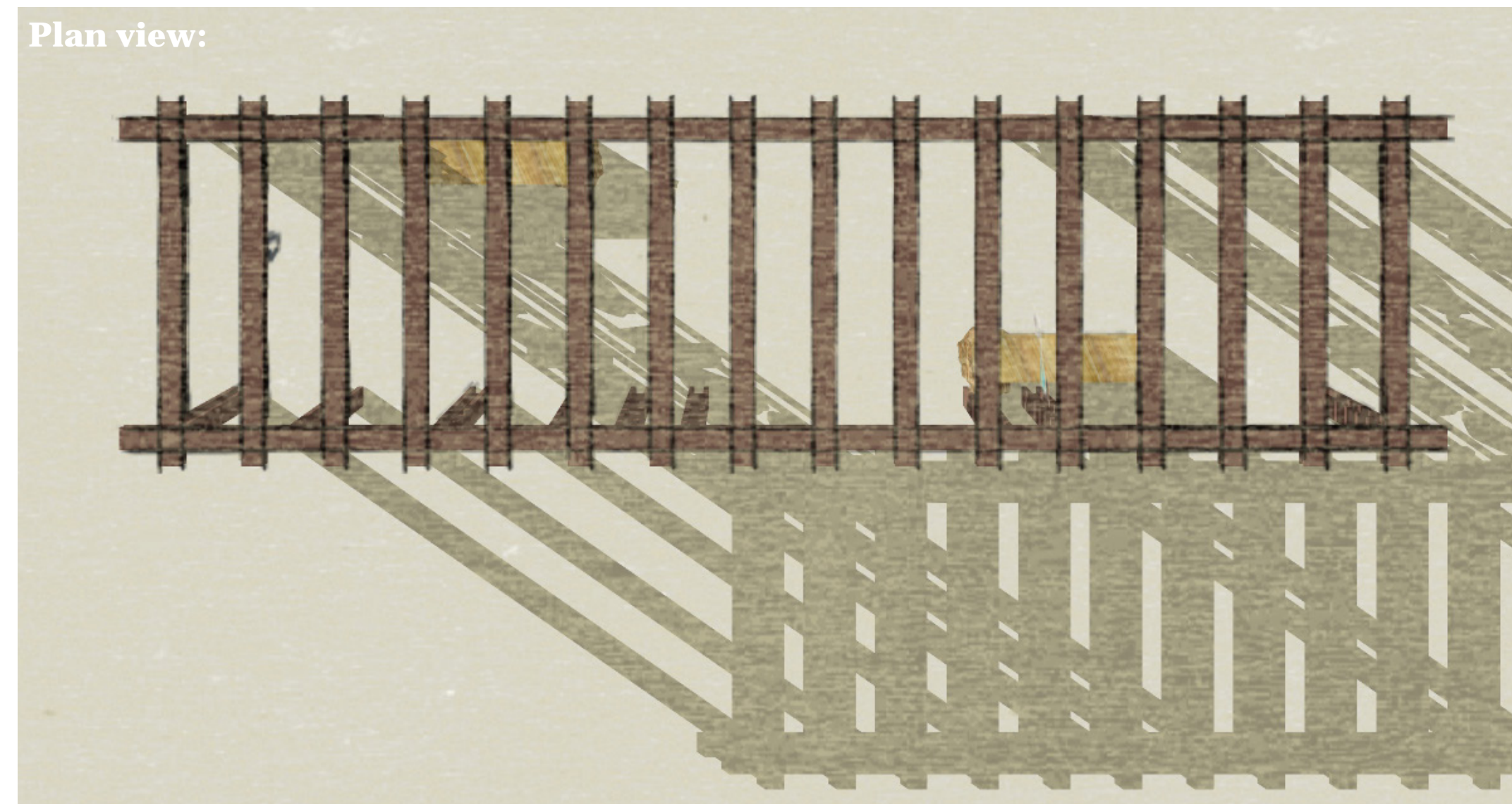
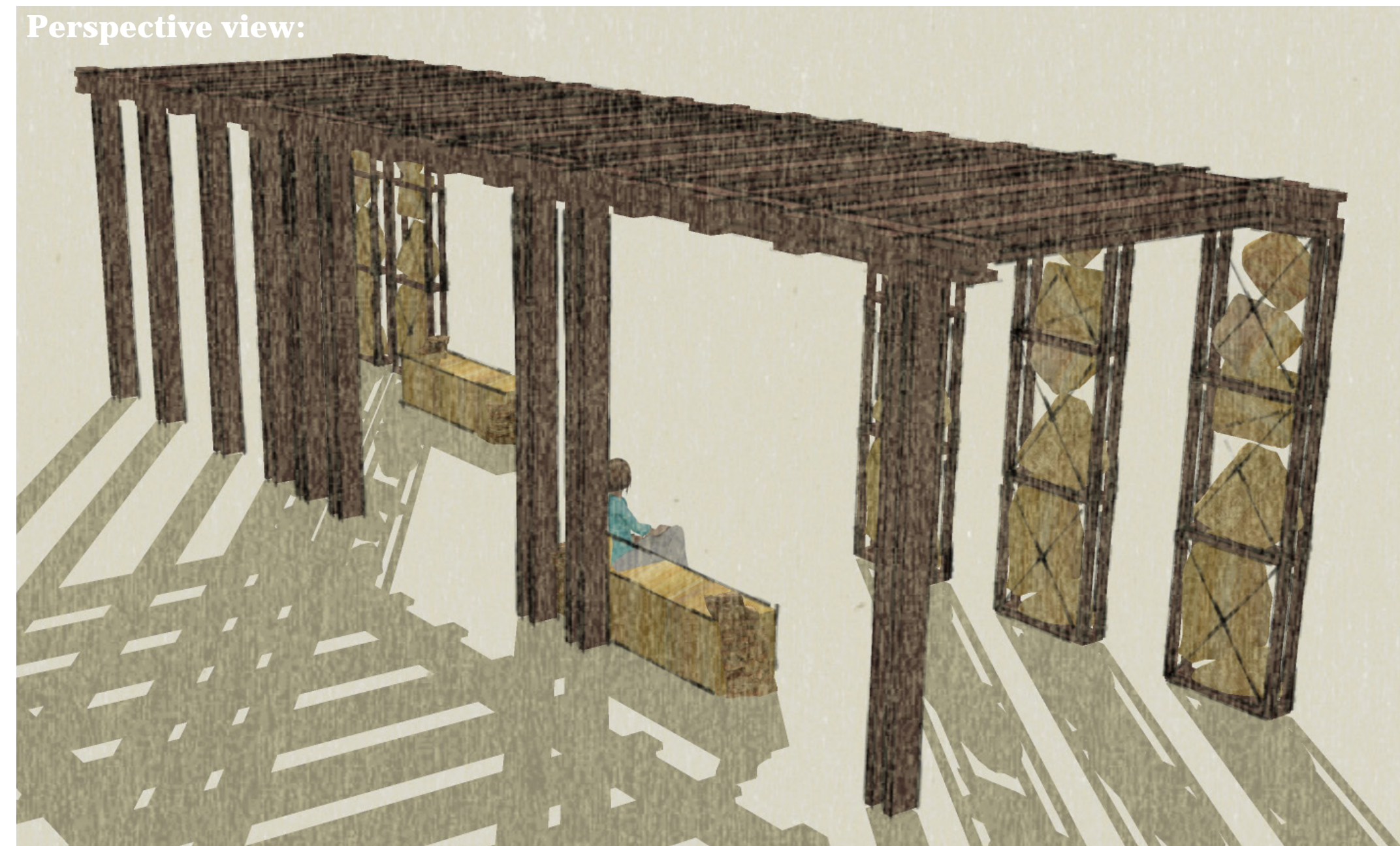




A History Built Out of Steel & Stone

- A legacy cast in stone
- Stone City
- Cornerstone
- Strength and Durability
- Steel Works
- “The City of Steel and Stone”
- Movable Bridges
- Shipping and transportation
- Union Proud

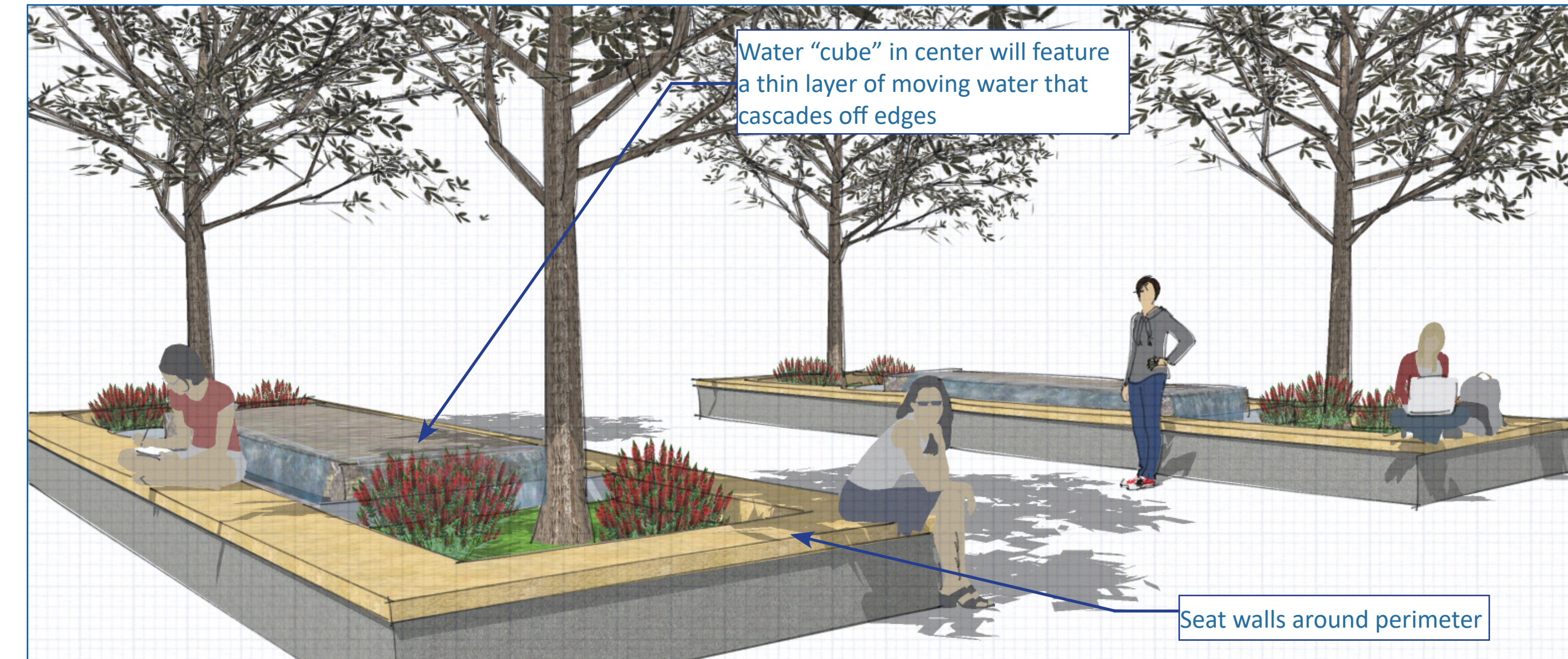
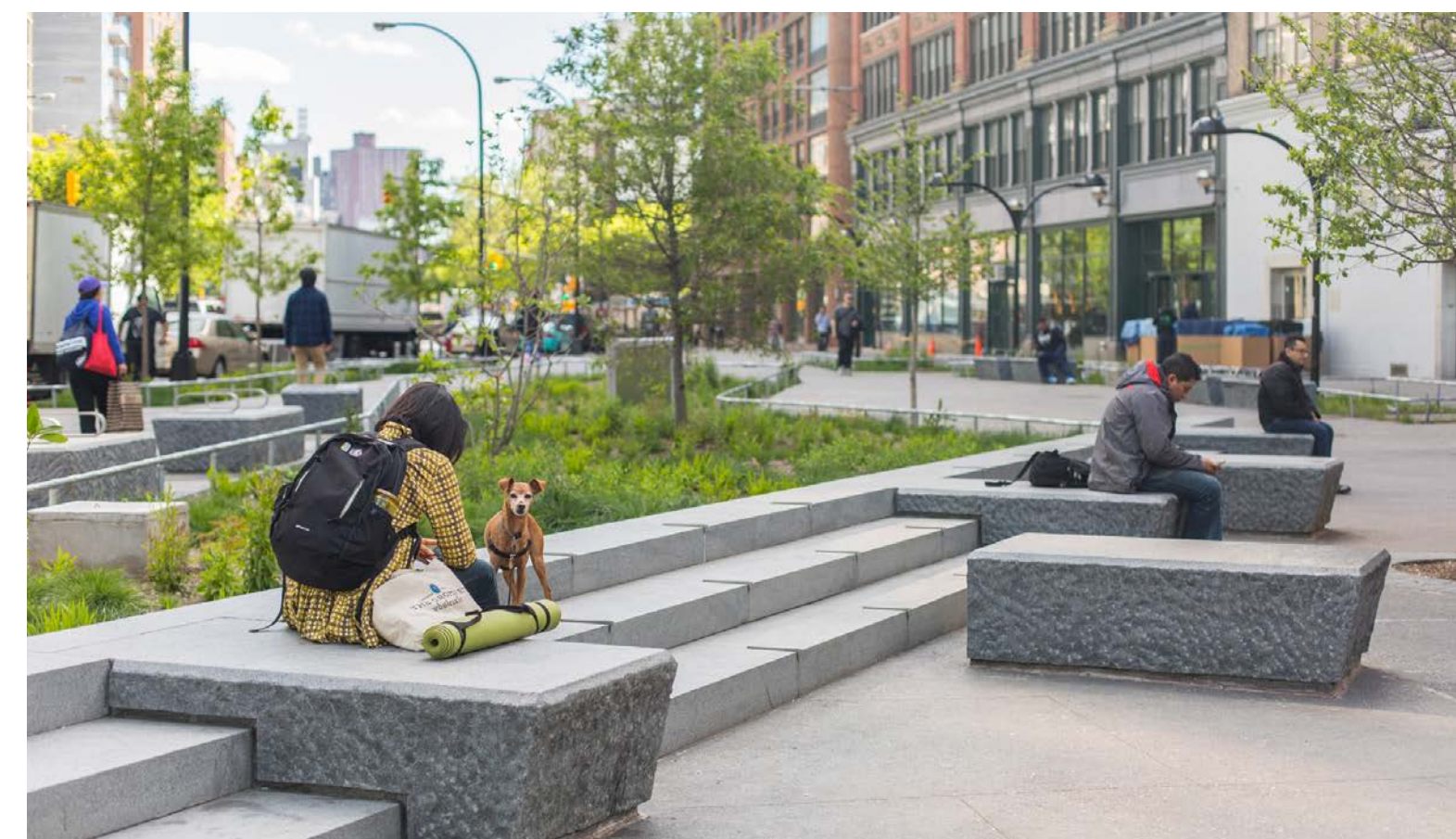




Shade structures



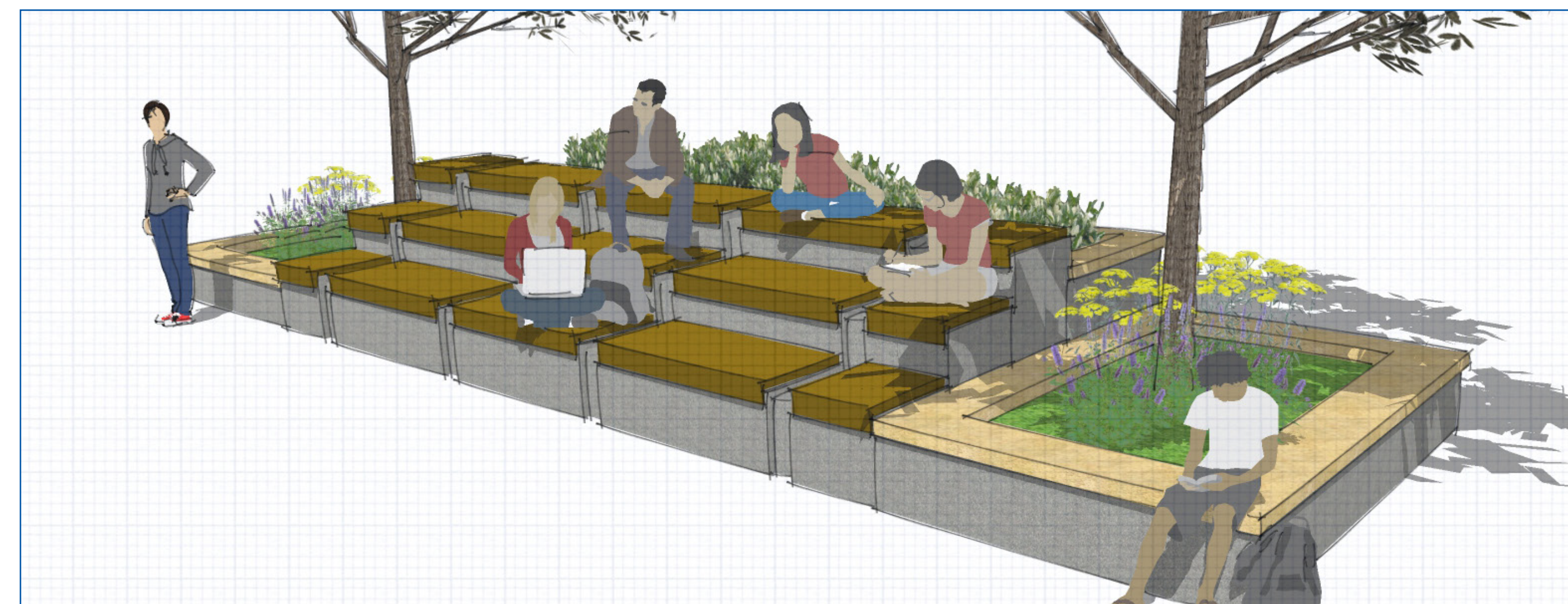
Sitting cubes



Water feature planters



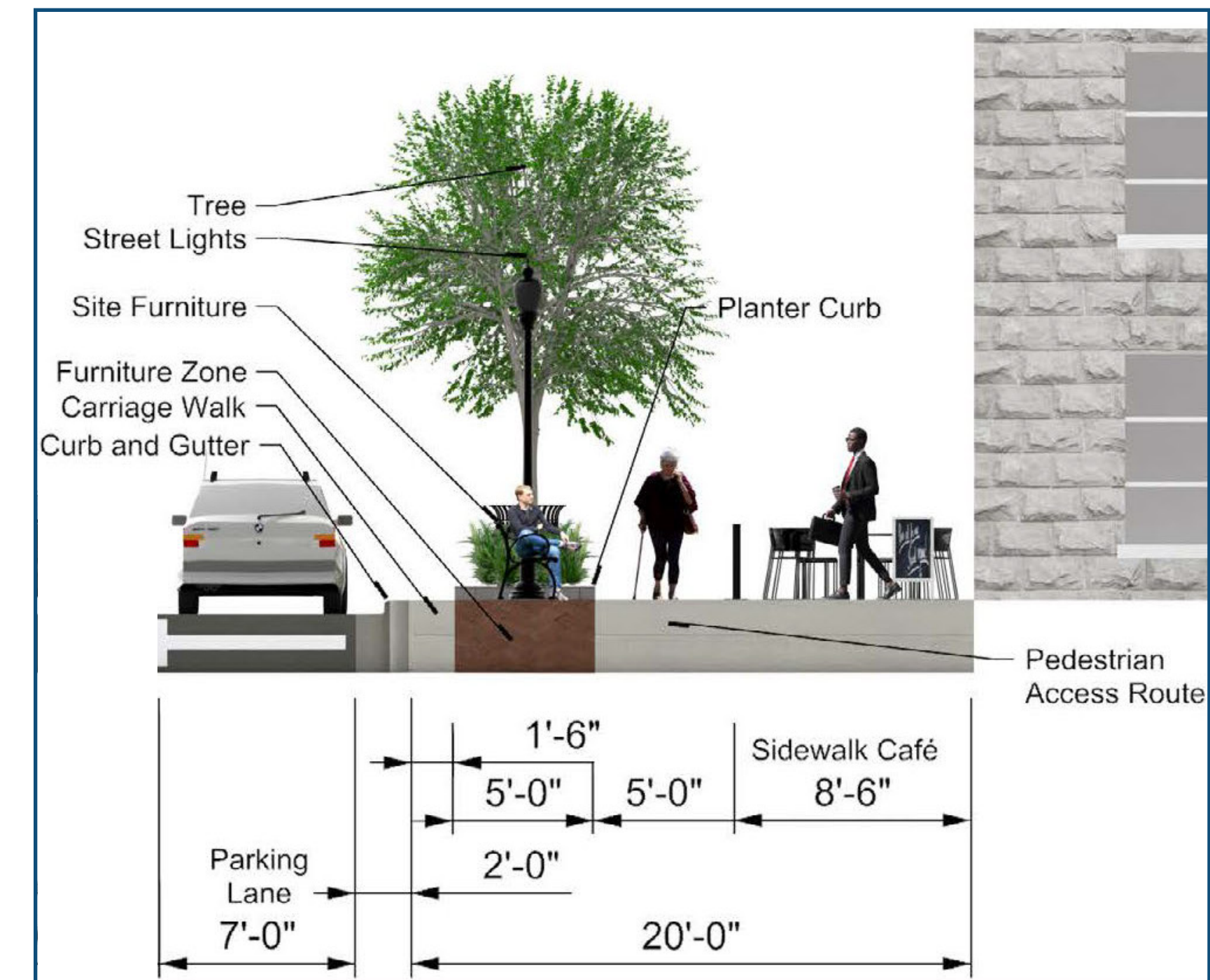
Side elevation (from Clinton Street):



Custom tiered seating with planters

Chicago Street Reconstruction Project Goals

- Straightening out Chicago Street's curvy centerline
- Evaluating the condition of the sidewalk vaults and proposed recommendations regarding vault work
- Evaluating potential streetscape elements
- Coordinating with IDOT for design of the U.S. Route 30 (Cass Street) and Chicago Street intersection



What do you think of the design concepts? We want to hear from you!

- Fill out a comment form and leave it with one of the project representatives
- Place red/green dots on the exhibit boards indicating elements that you like (green) and don't like (red)
- Place post-it notes on boards with comments
- Add comments to the handouts that show the two concept design options and leave it with one of the project representatives
- Email your comments to CitySquare@Joliet.gov

All open house materials are now posted on the project website. The public comment period for comments related to this open house will be open through March 17, 2023.

Project Website: Joliet.gov/CitySquare