

00 91 13

ADDENDUM NO. 1

DATE: December 8, 2021

FROM: Baxter & Woodman, Inc., Consulting Engineers

TO: Planholders of record for the Work titled:

City of Joliet, Illinois
Ridgewood Phase 3 Water Main Improvements
City of Joliet Contract No. 2609-0122

The Bidding Documents are amended as follows:

1. DRAWINGS

- A. Delete Sheet 3 in its entirety, and insert the attached Sheet 3, revision dated December 8, 2021.
- B. Delete Sheet 4 in its entirety, and insert the attached Sheet 4, revision dated December 8, 2021.
- C. Delete Sheet 16 in its entirety, and insert the attached Sheet 16, revision dated December 8, 2021.

2. SPECIFICATIONS

- A. Section 00 41 00.41, BID FORM:

Delete Section 00 41 00.41, BID FORM in its entirety and insert the attached BID FORM, revision dated December 8, 2021 in lieu thereof.

- B. Section 33 11 43, WATER DISTRIBUTION SYSTEM:

Page 33 11 43-1, after paragraph 1.1. B., add the following:

“1.1 C Distribute door hangers provided by the Owner at various construction milestones of the project, as described in the General Notes. The distribution of door hangers is considered incidental to the installation of the new water main and no additional compensation will be allowed.”

Nothing in this Addendum shall be construed as changing other requirements of the Bidding Documents. Each Bidder shall acknowledge receipt of this Addendum where indicated in the Bid Form.

END OF ADDENDUM NO. 1

ADDENDUM NO. 1
00 91 13-1 (210039.40)

CITY OF JOLIET WATER SYSTEM GENERAL NOTES

- VERIFY LOCATION, SIZE, AND DEPTH OF ALL EXISTING UTILITIES PRIOR TO CONSTRUCTION OF THE WATER MAIN. THE LOCATIONS OF EXISTING UTILITIES AS SHOWN ON THE DRAWINGS HAVE BEEN DETERMINED FROM THE BEST AVAILABLE INFORMATION AND IS GIVEN FOR THE CONVENIENCE OF THE CONTRACTOR. THE ENGINEER AND OWNER DO NOT ASSUME RESPONSIBILITY FOR THE ACCURACY OF THE LOCATION SHOWN. IT SHALL BE THE CONTRACTOR'S RESPONSIBILITY TO CONTACT ALL UTILITY COMPANIES AND LOCATE UTILITIES PRIOR TO ANY WORK.
- WHENEVER IT BECOMES NECESSARY TO RELOCATE UNDERGROUND GAS MAINS, TELEPHONE CONDUIT, OR ELECTRICAL LINES OR SUPPORT OR RELOCATE UTILITY POLES, THE UTILITY COMPANY INVOLVED WILL MAKE SUCH RELOCATION OR PROVIDE POLE SUPPORT. NOTIFY THE UTILITY COMPANY PROMPTLY. THIS WORK WILL BE INCIDENTAL TO THE CONTRACT.
- WHEREVER OBSTRUCTIONS NOT SHOWN ON THE DRAWINGS ARE ENCOUNTERED DURING THE PROGRESS OF THE WORK AND INTERFERE TO SUCH AN EXTENT THAT ALTERATIONS TO THE DRAWINGS ARE REQUIRED, THE ENGINEER SHALL BE NOTIFIED PRIOR TO ANY CHANGES.
- HORIZONTAL AND VERTICAL SEPARATION OF WATER MAINS AND SEWER LINES SHALL BE DONE IN ACCORDANCE WITH THE LATEST EDITION OF THE "STANDARD SPECIFICATION FOR WATER AND SEWER CONSTRUCTION IN ILLINOIS".
- PROVIDE PROPERTY OWNERS ADVANCE NOTICE OF CONSTRUCTION ACTIVITIES THAT WILL RESTRICT THE USE OF THEIR DRIVEWAYS.
- DO NOT STORE BEDDING AND BACKFILL MATERIALS, PIPES, FITTINGS, VAULTS, OR OTHER MATERIALS IN AREAS THAT WILL OBSTRUCT SIGHT LINES FOR STREETS AND DRIVEWAYS.
- ALL PROPOSED WATER MAIN AND SERVICES UNDER AND WITHIN 2' OF PAVEMENT OR SIDEWALK SHALL BE BACKFILLED WITH TRENCH BACKFILL WHICH SHALL BE CRUSHED STONE, GRADATION CA 6 OR CA 7.
- ALL MATERIALS SHALL BE IN ACCORDANCE WITH THE CITY OF JOLIET DEPARTMENT OF PUBLIC UTILITIES APPROVED MATERIALS LIST, LATEST EDITION.
- INSTALL NEW WATER MAIN WITH A MINIMUM OF 5' COVER BELOW EXISTING OR PROPOSED GROUND SURFACE UNLESS GREATER DEPTH IS REQUIRED TO AVOID EXISTING UTILITIES OR WHERE INDICATED ON THE DRAWINGS.
- PROVIDE 48 HOURS ADVANCE NOTICE TO THE CITY WHEN CONNECTION TO AN EXISTING WATER MAIN WILL BE MADE. COORDINATE SHUTDOWN OF EXISTING WATER MAINS WHEN REQUIRED WITH THE CITY. SCHEDULE THE WORK TO MINIMIZE THE NUMBER AND LENGTH OF SHUTDOWNS. PROVIDE WRITTEN NOTIFICATION OF SHUTDOWNS TO WATER USERS AFFECTED 24 HOURS IN ADVANCE.
- NOTIFY THE CITY'S PUBLIC UTILITIES DEPARTMENT IMMEDIATELY IF EXISTING LEAD WATER SERVICES ARE DISCOVERED.
- LOCATE PRESSURE CONNECTIONS, IF INDICATED ON THE DRAWINGS OR WHEN DIRECTED BY THE ENGINEER, A MINIMUM OF 2' FROM ANY EXISTING REPAIR SLEEVES OR PIPE JOINTS.
- PROVIDE A TEMPORARY COVERING OVER ALL NEW FIRE HYDRANTS UNTIL ALL NEW WATER MAINS ARE PUT INTO SERVICE AND NEW FIRE HYDRANTS ARE OPERABLE.
- SUCCESSFULLY TEST, DISINFECT, AND FLUSH WATER MAIN, AND OBTAIN ACCEPTANCE OF THE WATER MAIN BY THE CITY OF JOLIET, PRIOR TO MAKING WATER SERVICE CONNECTIONS. FLUSH PIPELINES TO OBTAIN A VELOCITY OF 2.5 FT/S PER AWWA STANDARD C651.
- SEWER TESTING, CLEANING, AND TELEVISION REQUIREMENTS: ALL SANITARY SEWER MAINS SHALL BE DEFLECTION TESTED AND AIR TESTED PER THE LATEST EDITION OF THE "STANDARD SPECIFICATIONS FOR WATER AND SEWER CONSTRUCTION IN ILLINOIS". ALL NEWLY CONSTRUCTED SEWER MAINS SHALL BE CLEANED AND TELEVIEWED PRIOR TO BEING PUT INTO SERVICE.
- USE RESTRAINED MECHANICAL JOINT FITTINGS WITH MEGALUG TO PLUG/CAP EXISTING WATER MAINS TO REMAIN IN SERVICE AND FOR EXISTING WATER MAINS TO BE ABANDONED. PLUGS/CAPS ON WATER MAIN TO REMAIN IN SERVICE SHALL INCLUDE AN ADEQUATELY SIZED CAST-IN-PLACE CONCRETE THRUST BLOCK AS DIRECTED BY THE CITY.
 - ALL STREETS SHALL HAVE 2.5 INCHES OF BINDER AND 1.5 INCHES OF SURFACE COURSE EXCEPT ON ELGIN AVE WHERE WATER MAIN CROSSES BRIGGS ST. THIS INTERSECTION SHALL HAVE 10 INCHES OF BINDER AND 2 INCHES OF SURFACE COURSE.
- REPLACE ALL CONCRETE SIDEWALKS DISTURBED BY CONSTRUCTION TO THE NEAREST CONSTRUCTION JOINT. A MAXIMUM LENGTH OF TEN LINEAL FEET PER CROSSING WILL BE UTILIZED FOR PAY QUANTITY CALCULATIONS.
- AS-BUILT DRAWINGS SHALL BE PREPARED BY THE CONTRACTOR AND SUBMITTED TO THE ENGINEER AS SOON AS THE PROJECT IS COMPLETED. ANY CHANGE IN THE LENGTH, LOCATION, OR ALIGNMENT SHALL BE SHOWN IN RED.
- EROSION CONTROL WILL BE CONSTRUCTED IN ACCORDANCE WITH STANDARD SPECIFICATIONS FOR SOIL EROSION AND SEDIMENT CONTROL AS CONTAINED IN IEPA/WPC/87-012 OR CURRENT EDITION.
- THE CITY OF JOLIET WATER DEPARTMENT SHALL BE RESPONSIBLE FOR COMPLETING ALL TAPS TO EXISTING WATER MAINS. CONTRACTOR WILL BE RESPONSIBLE FOR CALLING 815-724-4230 TO SCHEDULE AN APPOINTMENT WITH THE CITY WATER DEPARTMENT. APPOINTMENTS ARE AVAILABLE ON TUESDAYS AND THURSDAYS.
- IT SHALL BE THE CONTRACTOR'S DUTY AND RESPONSIBILITY TO ASCERTAIN AND EXECUTE THE MEANS, METHODS, AND SEQUENCE OF CONSTRUCTION IN ACCORDANCE WITH THE DRAWINGS, SPECIFICATIONS, AND OTHER CONTRACT DOCUMENTS. THIS SHALL INCLUDE, BUT SHALL NOT BE LIMITED TO, THE EXCLUSIVE DUTY AND RESPONSIBILITY TO PROVIDE FOR WORKPLACE SAFETY AND WORKER SUPERVISION. IT SHALL EXCLUSIVELY BE THE CONTRACTOR'S DUTY AND RESPONSIBILITY TO INVESTIGATE AND ASCERTAIN THE CURRENT PHYSICAL STATE AND OPERATIONAL STATUS OF THE CITY'S WATER SUPPLY SYSTEM AND THE CITY'S SANITARY SEWER SYSTEM, INCLUDING WHETHER A WATER MAIN OR OTHER VESSEL IS OPERATIONAL, CONTAINS WATER, IS PRESSURIZED, OR IS OTHERWISE SAFE TO ALTER. ANY INFORMATION PROVIDED BY THE CITY, OR ITS EMPLOYEES AND CONSULTANTS, REGARDING THE STATE OF ITS WATER SUPPLY AND SANITARY SEWER SYSTEMS IS PROVIDED AS A COURTESY TO THE CONTRACTOR BUT IS NOT WARRANTED TO BE TRUE AND MAY NOT BE RELIED ON BY THE CONTRACTOR IN SATISFACTION OF, OR TO DIMINISH, ITS EXCLUSIVE DUTY TO ASCERTAIN AND EXECUTE THE MEANS, METHODS, AND SEQUENCES OF CONSTRUCTION IN ACCORDANCE WITH THE DRAWINGS, SPECIFICATIONS, AND OTHER CONTRACT DOCUMENTS AND ITS EXCLUSIVE RESPONSIBILITY TO PROVIDE FOR WORKPLACE SAFETY AND WORKER SUPERVISION.
- WATER SERVICE INSTALLATION WORK MUST BEGIN WITHIN 7 DAYS OF IEPA APPROVAL. FINAL PAVEMENT RESTORATION MUST BE COMPLETED WITHIN 21 DAYS AFTER THE LAST COMPLETED WATER SERVICE CONNECTION ON ANY ONE STREET OR MOVING THE EXCAVATION CREW AND EQUIPMENT TO ANOTHER STREET. THE CONTRACTOR HAS THE OPTION TO INSTALL TEMPORARY PAVEMENT AT NO ADDITIONAL COST TO THE CITY WITHIN 7 CALENDAR DAYS. THE CITY CAN STOP OPERATIONS UNTIL TEMPORARY PAVEMENT IS PLACED OR PERMANENT PAVEMENT RESTORATION IS COMPLETE.

24. CONTRACTOR TO DISTRIBUTE DOOR HANGERS AT VARIOUS MILESTONES DURING THE PROJECT. DOOR HANGERS WILL BE PROVIDED BY THE OWNER. DOOR HANGERS MUST BE DISTRIBUTED AT THE FOLLOWING MILESTONES:
- ONE WEEK PRIOR TO THE START OF CONSTRUCTION.
 - 48 HOURS IN ADVANCE OF WATER MAIN SHUTDOWNS TO ALL AFFECTED STRUCTURES (THE SAME STRUCTURE MAY RECEIVE MORE THAN ONE DOOR HANGER).
 - 48 HOURS IN ADVANCE OF WATER SERVICE LINE REPLACEMENTS.
 - ONE WEEK PRIOR TO RESTORATION ACTIVITIES ON ANY STREET.

MAINTENANCE OF TRAFFIC NOTES

- EMERGENCY VEHICLES ACCESS SHALL BE MAINTAINED AT ALL TIMES. ANY SIGNIFICANT CHANGE IN TRAFFIC CONTROL SHALL HAVE PRIOR APPROVAL BY THE ENGINEER. THE CONTRACTOR SHALL PROVIDE A MINIMUM OF THREE (3) DAYS NOTICE IN ADVANCE OF CONSTRUCTION ACTIVITIES WHICH IMPACT EMERGENCY SERVICES.
- DAYTIME LANE CLOSURE ON BRIGGS ST SHALL BE IN ACCORDANCE WITH APPLICABLE IDOT HIGHWAY STANDARDS (701001, 701006, AND 701501). A TEN (10) FOOT TRAVEL LANE MUST BE MAINTAINED AT A MINIMUM OF EIGHT (8) FEET FROM EDGE OF TRENCH TO EDGE OF TRAVEL LANE.
- BRIGGS STREET SHALL BE OPEN TO TWO WAY TRAFFIC AT THE END OF EACH WORK DAY. THERE SHALL BE NO DROP OFFS WITHIN EIGHT (8) FEET OF EITHER TRAVEL LANE AT THE END OF THE DAY. ALL TRENCHES ON BRIGGS STREET SHALL BE BACKFILLED WITH THE TOP 12 INCHES BEING CA-6 OR PLATED AT THE END OF THE WORKDAY. THIS WORK SHALL BE INCLUDED IN THE PAY ITEM TRENCH BACKFILL.
- BRIGGS STREET SHALL BE PATCHED WITH HMA THICKNESS MATCHING THE EXISTING THICKNESS WITHIN 3 WEEKS OF PAVEMENT REMOVAL.
- SEE HIGHWAY STANDARD 701501 FOR DRUM SPACING.
- CONSTRUCTION VEHICLES AND/OR EQUIPMENT SHALL NOT BE PARKED OVERNIGHT WITHIN BRIGGS STREET RIGHT-OF-WAY. THE ENGINEER WILL ASSIST THE CONTRACTOR IN IDENTIFYING CONSTRUCTION STAGING LOCATIONS AT THE START OF CONSTRUCTION.

SUMMARY OF QUANTITIES

CITY OF JOLIET RIDGWOOD PHASE 3 WATER MAIN IMPROVEMENTS			
NO.	PAY ITEM	UNIT	QUANTITY
1	PRECONSTRUCTION VIDEO RECORDING	LSUM	1
2	TRAFFIC CONTROL AND PROTECTION	LSUM	1
3	GRANULAR TRENCH BACKFILL	CUYD	2400
4	CONTROLLED LOW STRENGTH FLOWABLE FILL MIXTURE (CLSM)	CUYD	100
5	DUCTILE IRON WATER MAIN (OPEN CUT), 6-INCH	FOOT	131
6	DUCTILE IRON WATER MAIN (OPEN CUT), 8-INCH	FOOT	4146
7	DUCTILE IRON WATER MAIN (OPEN CUT), 12-INCH	FOOT	11
8	MISCELLANEOUS FITTINGS	POUND	6500
9	PROJECT MANAGEMENT	HOUR	3
10	WATER SERVICE CONNECTION TO WATER MAIN AND CURB STOP, 1-INCH	EACH	77
11	WATER SERVICE CONNECTION TO WATER MAIN AND CURB STOP, 1.5-INCH	EACH	1
12	WATER SERVICE LINE TYPE K - OPEN CUT, 1-INCH	FOOT	490
13	WATER SERVICE LINE TYPE K - OPEN CUT, 1.5-INCH	FOOT	25
14	WATER SERVICE LINE TYPE K - DIRECTIONAL DRILLING, 1-INCH	FOOT	1470
15	WATER SERVICE LINE TYPE K - DIRECTIONAL DRILLING, 1.5-INCH	FOOT	25
16	WATER SERVICE LINE TYPE L, 3/4-INCH	FOOT	20
17	WATER SERVICE LINE TYPE L, 1-INCH	FOOT	20
18	WATER SERVICE LINE TYPE L, 1.5-INCH	FOOT	20
19	WATER SERVICE CONNECTION ON PRIVATE PROPERTY - BASEMENT OR CRAWL SPACE	EACH	1
20	WATER SERVICE CONNECTION ON PRIVATE PROPERTY - SLAB	EACH	1
21	UTILITY LOCATION - PRIVATE PROPERTY	EACH	1
22	WATER METER RELOCATION	EACH	1
23	WATER METER REPLACEMENT	EACH	1
24	CONNECT TO WATER MAIN (NON-PRESSURE), 6-INCH	EACH	3
25	CONNECT TO WATER MAIN (NON-PRESSURE), 8-INCH	EACH	5
26	CONNECT TO WATER MAIN (NON-PRESSURE), 12-INCH	EACH	1
27	CONNECT TO WATER MAIN (PRESSURE), 12-INCH X 8-INCH	EACH	5
28	GATE VALVE, 8-INCH	EACH	16
29	VALVE BOX	EACH	8
30	VALVE VAULT, 4-FOOT DIAMETER	EACH	8
31	VALVE VAULT, 5-FOOT DIAMETER	EACH	5
32	VALVE VAULT (ADDITIONAL DEPTH), 4-FOOT DIAMETER	VFT	5
33	VALVE VAULT (ADDITIONAL DEPTH), 5-FOOT DIAMETER	VFT	5
34	FIRE HYDRANT	EACH	9
35	FIRE HYDRANT BARREL EXTENSION	VFT	5
36	LINE STOP, 6-INCH	EACH	5
37	LINE STOP, 8-INCH	EACH	2
38	LINE STOP, 12-INCH	EACH	2
39	ABANDON EXISTING WATER MAINS AND APPURTENANCES	LSUM	1
40	FILLING OF EXISTING WATER MAIN PIPE FOR ABANDONMENT	CUYD	4
41	SANITARY SEWER REMOVAL AND REPLACEMENT, 8-INCH	FOOT	51
42	STORM SEWER REMOVAL AND REPLACEMENT - 15-INCH	FOOT	20
43	STORM SEWER REMOVAL AND REPLACEMENT, 18-INCH	FOOT	22
44	INLET PROTECTION FILTER	EACH	39
45	TEMPORARY HOT-MIX ASPHALT PAVEMENT	SOYD	330
46	HOT-MIX ASPHALT REMOVAL AND REPLACEMENT, 2.5" BINDER 1.5" SURFACE	SOYD	3810
47	HOT-MIX ASPHALT REMOVAL AND REPLACEMENT, 10" BINDER 2" SURFACE	SOYD	150
48	HOT-MIX ASPHALT DRIVEWAY REMOVAL AND REPLACEMENT, 3-INCH	SOYD	150
49	PCC DRIVEWAY REMOVAL AND REPLACEMENT, 6-INCH	SOYD	150
50	GRAVEL SHOULDER RESTORATION	FOOT	150
51	CONCRETE CURB AND GUTTER REMOVAL AND REPLACEMENT	FOOT	400
52	PCC SIDEWALK REMOVAL AND REPLACEMENT	SOFT	2000
53	DETECTABLE WARNINGS	SOFT	10
54	PAVEMENT MARKING, 6-INCH (THERMOPLASTIC)	FOOT	210
55	PAVEMENT MARKING, 24-INCH (THERMOPLASTIC)	FOOT	180
56	RESTORATION OF LAWNS AND PARKWAYS	SOYD	700
57	REMOVE AND REPLACE DRAIN TILES, 6-INCH THROUGH 12-INCH	FOOT	130
58	ADJUSTING SANITARY SEWER SERVICE LINE	EACH	14
59	DUST CONTROL	DAY	13
60	REMOVAL AND REPLACEMENT OF UNSUITABLE MATERIAL	CUYD	48
61	SOIL TESTS FOR CONTAMINANTS	EACH	8
62	CONTAMINATED WASTE DISPOSAL	CUYD	48
63	EXPLORATORY EXCAVATION	EACH	7
64	TREE ROOT PRUNING	EACH	3
65	TREE TRIMMING	LSUM	1
66	WATER SERVICE LOCATE	LSUM	1

I:\AZURE\JOLIET\210039-2022 WATER MAIN\CAD\RIDGEWOOD PH 3\DWG3 CURRENT\210039-COVER_GEN_RIDGEWOOD PH 3.DWG 3 GENERAL NOTES AND SUMMARY OF QUANTITIES
 Plotted: 12/8/2021 10:48 AM By: ANACINO
 Copyright © 2021, By Baxter & Woodman, Inc.
 State of Illinois License No. 184-001121 - Expires 4-30-23

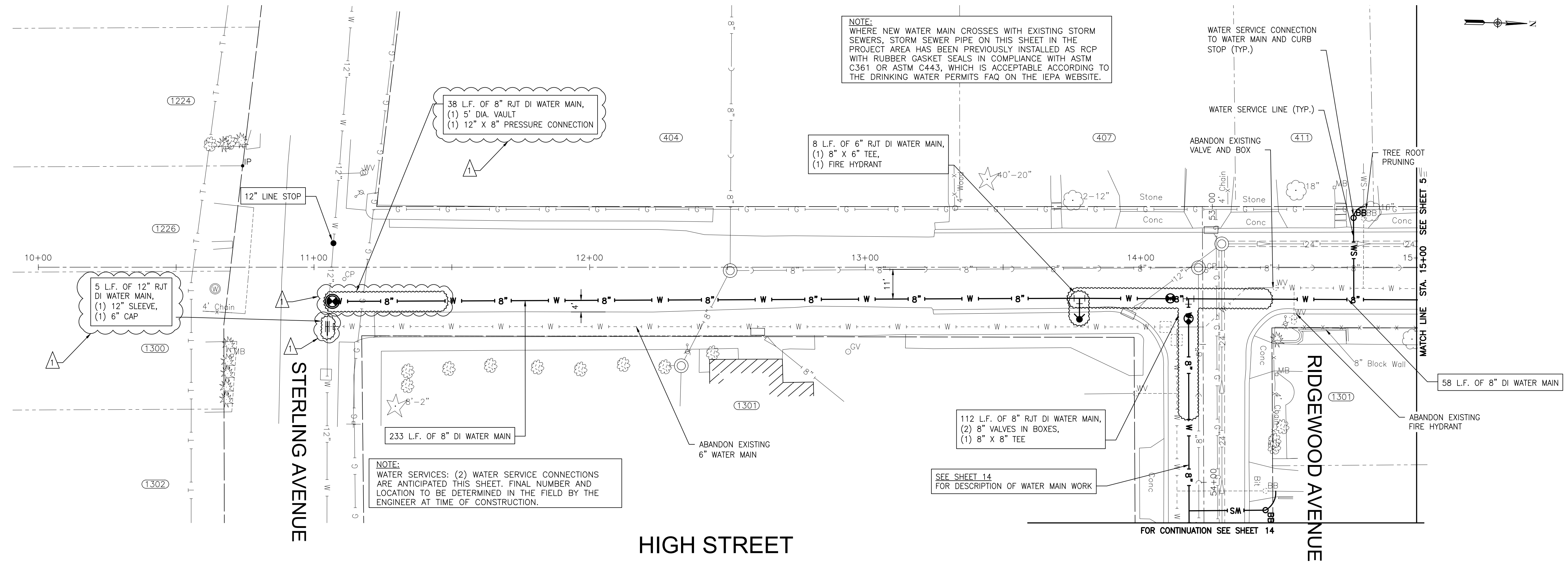
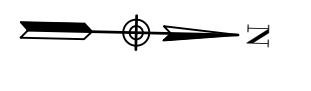
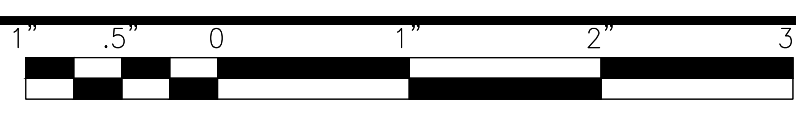


CONSULTANTS	REVISED - PER ADDENDUM 1 12/8/21
	REVISED -
	REVISED -
	REVISED -

CITY OF JOLIET, ILLINOIS
RIDGWOOD PHASE 3 WATER MAIN IMPROVEMENTS
CITY OF JOLIET CONTRACT NO. 2609-0122

SCALE: AS NOTED		PROJECT NO: 210039.40	
DESIGNED - EK		TOTAL SHEETS	SHEET NO.
DRAWN - JJS		20	3
CHECKED - LMS			
DATE - 11/18/21			

FINAL DESIGN
FOR BIDDING



CONSULTANTS	REVISED - Δ PER ADDENDUM 1 12-8-21
	REVISED -
	REVISED -
	REVISED -

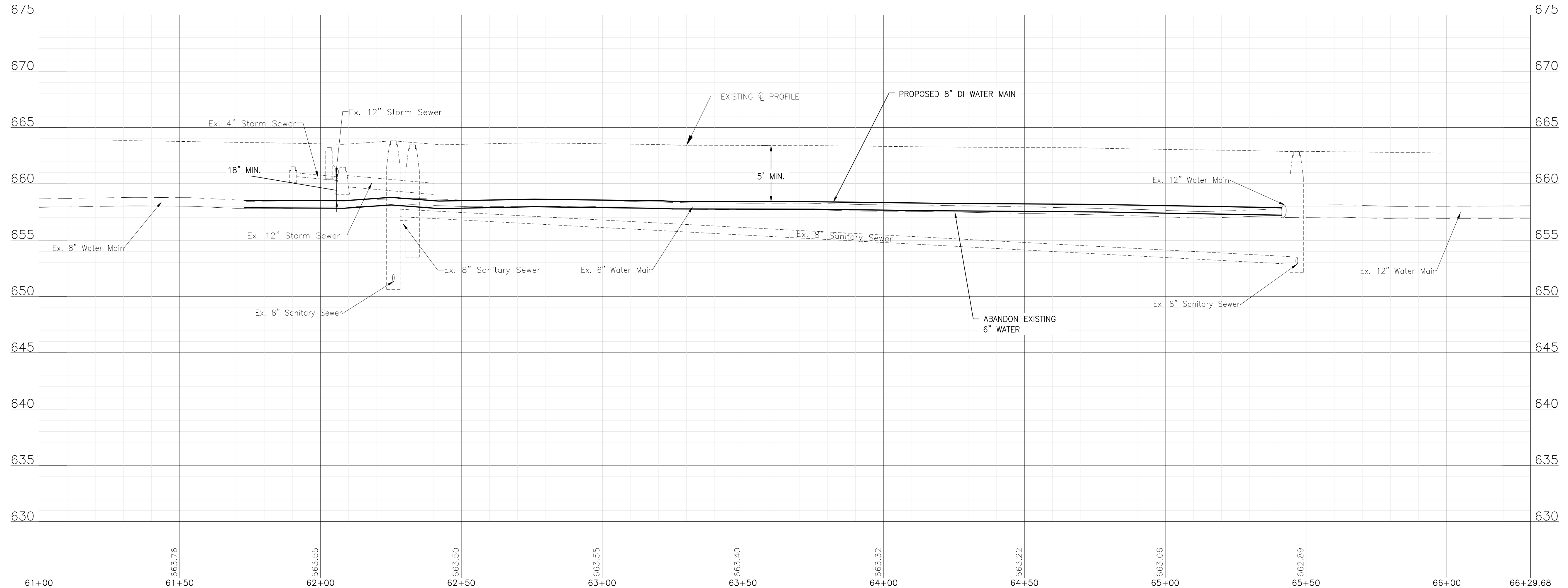
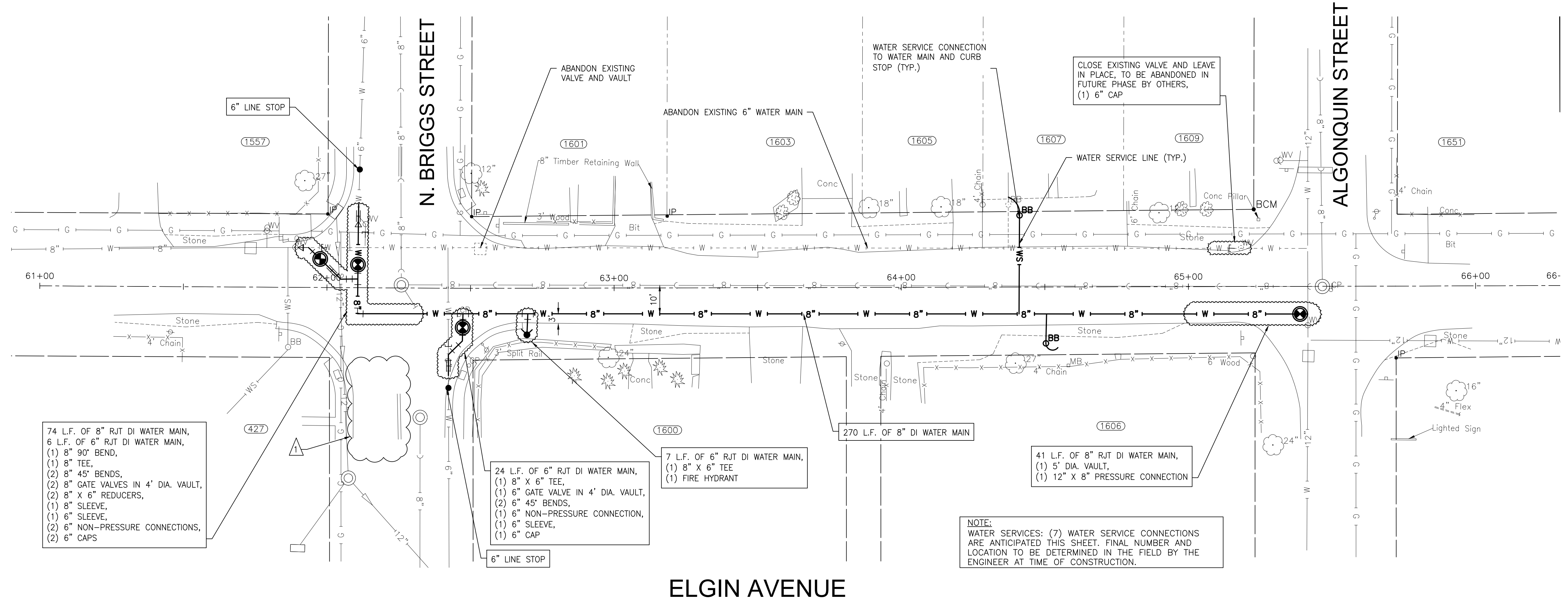
CITY OF JOLIET, ILLINOIS
RIDGEWOOD PHASE 3 WATER MAIN IMPROVEMENTS
CITY OF JOLIET CONTRACT NO. 2609-0122

HIGH STREET STA. 10+00 TO STA. 15+00 PLAN AND PROFILE
 SCALE: HORIZ 1"=20' / VERT 1"=5'
 PROJECT NO: 210039.40

DESIGNED - EK	TOTAL SHEETS	SHEET NO.
DRAWN - JJS	20	4
CHECKED - LMS		
DATE - 11/18/21		

FINAL DESIGN FOR BIDDING

I:\AZURE\JOLIET\210039-2022 WATER MAIN\CAD\RIDGEWOOD PH 3\DWG\CURRENT\210039 DESIGN-SHEETS_RIDGEWOOD PH3 C3D16.DWG 16 ELGIN AVENUE STA. 61+00 TO STA. 67+00 PLAN AND PROFILE
 Plotted: 12/7/2021 8:37 PM By: ANACINDO
 Copyright © 2021, By Baxter & Woodman, Inc.
 State of Illinois License No. 184-001121 - Expires 4-30-23



ELGIN AVENUE

NOTE:
 WATER SERVICES: (7) WATER SERVICE CONNECTIONS ARE ANTICIPATED THIS SHEET. FINAL NUMBER AND LOCATION TO BE DETERMINED IN THE FIELD BY THE ENGINEER AT TIME OF CONSTRUCTION.

CONSULTANTS	REVISED - Δ PER ADDENDUM 1 12-8-21
	REVISED -
	REVISED -
	REVISED -

CITY OF JOLIET, ILLINOIS
RIDGEWOOD PHASE 3 WATER MAIN IMPROVEMENTS
CITY OF JOLIET CONTRACT NO. 2609-0122

ELGIN AVENUE STA. 61+00 TO STA. 67+00 PLAN AND PROFILE
 SCALE: HORIZ 1"=20' / VERT 1"=5'
 PROJECT NO: 210039.40

DESIGNED - EK	TOTAL SHEETS	SHEET NO.
DRAWN - JJS	20	16
CHECKED - LMS		
DATE - 11/18/21		

FINAL DESIGN FOR BIDDING

00 41 00.41

BID FORM

ONE ORIGINAL BID SHALL BE SUBMITTED

To: City of Joliet
Mayor and City Council
150 W. Jefferson Street
Joliet, IL 60432
(hereinafter called Owner)

From: _____
Company

Address

City State Zip Code

() _____
Telephone

E-MAIL

(hereinafter called Bidder)

1. The undersigned Bidder proposes and agrees, if this Bid is accepted, to enter into an Agreement with Owner in the form included in the Bidding Documents to furnish all labor, materials, tools, and services required for the construction of the Ridgewood Phase 3 Water Main Improvements for the City of Joliet, Will County, Illinois (Engineers' Job No. 210039.40), all in accordance with the Bidding Documents prepared by Baxter & Woodman, Inc., Consulting Engineers.
2. Bidder accepts all of the terms and conditions of the Advertisement for Bids and Bidder Instructions, including without limitation those dealing with the disposition of Bid Security. This Bid will remain open for 120 days after the date of Bid opening or for such longer period of time that Bidder may agree to in writing upon request of Owner. Bidder will sign and submit the Agreement with the Bonds and other documents required by the Bidding Documents within 10 days after the date of Owner's Notice of Award.
3. In submitting this Bid, Bidder represents, as set forth in the Agreement, that:
 - a. Bidder has examined copies of all the Bidding Documents.
 - b. Bidder is familiar with the nature and extent of the Bidding Documents, Work, site, locality, and all local conditions and legal and regulatory requirements that in any

BID FORM

manner may affect cost, progress, performance, or furnishing of the Work, and has made such independent investigations as Bidder deems necessary.

- c. Bidder has obtained and carefully studied (or assumes responsibility for having done so) all additional or supplementary examinations, investigations, explorations, tests, studies and data concerning conditions (surface, subsurface and Underground Facilities) at or contiguous to the Site which may affect cost, progress, or performance of the Work or which relate to any aspect of the means, methods, techniques, sequences, and procedures of construction to be employed by Bidder, including applying the specific means, methods, techniques, sequences, and procedures of construction expressly required by the Bidding Documents to be employed by Bidder, and safety precautions and programs incident thereto.
- d. Bidder does not consider that any further examinations, investigations, explorations, tests, studies, or data are necessary for the determination of this Bid for performance of the Work at the price(s) bid and within the times and in accordance with the other terms and conditions of the Bidding Documents.
- e. Bidder is aware of the general nature of work to be performed by Owner and others at the Site that relates to the Work as indicated in the Bidding Documents.
- f. Bidder has correlated the information known to Bidder, information and observations obtained from visits to the Site, reports and drawings identified in the Bidding Documents, and all additional examinations, investigations, explorations, tests, studies, and data with the Bidding Documents.
- g. Bidder has given Engineer written notice of all conflicts, errors, ambiguities, or discrepancies that Bidder has discovered in the Bidding Documents, and the written resolution thereof by Engineer is acceptable to Bidder.
- h. The Bidding Documents are generally sufficient to indicate and convey understanding of all terms and conditions for the Work for which this Bid is submitted.
- i. This Bid is genuine and not made in the interest or on behalf of any undisclosed person, firm or corporation, and is not submitted in conformity with any agreement or rules of any group, association, organization, or corporation; Bidder has not directly or indirectly induced or solicited any other Bidder to submit a false or sham Bid; Bidder has not solicited or induced any person, firm, or a corporation to refrain from bidding; and Bidder has not sought by collusion to obtain for itself any advantage over any other Bidder or over Owner.
- j. Bidder is not barred from contracting with the Owner as a result of a violation 720 ILCS 5/33 et seq.
- k. Bidder agrees that no less than the prevailing rate of wages under the Davis-Bacon Wage Act (40 USC 276a through 276a-5) as determined by the U.S. Department of

BID FORM

Labor shall be paid to all laborers, workmen and mechanics performing work under this contract.

- I. Bidder agrees to cooperate with all Davis-Bacon Wage Act compliance activities including employee interviews by Owner.
 - m. Bidder complies with the provisions of the Employment of Illinois Workers on Public Works Act (30 ILCS 570/) as they may apply to this Project.
 - n. Bidder will comply with the requirements of Sections 22.51(f)(2)(B) and 22.51a(d)(2)(B) of the Illinois Environmental Protection Act ([415 ILCS5/22.51(f)(2)(B)] and [415 ILCS5/22.51a(d)(2)(B)]) for the disposal of uncontaminated soils including uncontaminated soil mixed with other clean construction or demolition debris (CCDD) materials and has included any costs associated with compliance in the Bid.
4. Bidder submits the following Schedule of Unit Prices for the Work to be performed in accordance with the Bidding Documents and agrees that items of work not specifically mentioned in the Schedule which are necessary and required to complete the Work intended shall be done incidental to and as part of the items of work for which a unit price is given, and understands that no additional payment will be made for such incidental work.

Bidder agrees that the Owner may select any one or more Parts of this Bid, and if awarded the Contract for such Part or Parts of this Bid, the Bidder agrees to perform and complete the work at the Contract Unit Prices submitted herein.

SCHEDULE OF UNIT PRICES					
No.	Pay Item	Approximate Quantity		Unit Price	Amount
1	PRECONSTRUCTION VIDEO RECORDING	1	LSUM	Lump Sum	\$
2	TRAFFIC CONTROL AND PROTECTION	1	LSUM	Lump Sum	\$
3	GRANULAR TRENCH BACKFILL	2,400	CUYD	\$	\$
4	CONTROLLED LOW STRENGTH FLOWABLE FILL MIXTURE (CLSM)	100	CUYD	\$	\$
5	DUCTILE IRON WATER MAIN (OPEN CUT), 6-INCH	131	FOOT	\$	\$
6	DUCTILE IRON WATER MAIN (OPEN CUT), 8-INCH	4,146	FOOT	\$	\$
7	DUCTILE IRON WATER MAIN (OPEN CUT), 12-INCH	11	FOOT	\$	\$
8	MISCELLANEOUS FITTINGS	6,500	POUND	\$	\$
9	PROJECT MANAGEMENT	3	HOUR	\$	\$

BID FORM

SCHEDULE OF UNIT PRICES					
No.	Pay Item	Approximate Quantity		Unit Price	Amount
10	WATER SERVICE CONNECTION TO WATER MAIN AND CURB STOP, 1-INCH	77	EACH	\$	\$
11	WATER SERVICE CONNECTION TO WATER MAIN AND CURB STOP, 1.5-INCH	1	EACH	\$	\$
12	WATER SERVICE LINE TYPE K - OPEN CUT, 1-INCH	490	FOOT	\$	\$
13	WATER SERVICE LINE TYPE K - OPEN CUT, 1.5-INCH	25	FOOT	\$	\$
14	WATER SERVICE LINE TYPE K - DIRECTIONAL DRILLING, 1-INCH	1,470	FOOT	\$	\$
15	WATER SERVICE LINE TYPE K - DIRECTIONAL DRILLING, 1.5-INCH	25	FOOT	\$	\$
16	WATER SERVICE LINE TYPE L, 3/4-INCH	20	FOOT	\$	\$
17	WATER SERVICE LINE TYPE L, 1-INCH	20	FOOT	\$	\$
18	WATER SERVICE LINE TYPE L, 1.5-INCH	20	FOOT	\$	\$
19	WATER SERVICE CONNECTION ON PRIVATE PROPERTY - BASEMENT OR CRAWL SPACE	1	EACH	\$	\$
20	WATER SERVICE CONNECTION ON PRIVATE PROPERTY - SLAB	1	EACH	\$	\$
21	UTILITY LOCATION - PRIVATE PROPERTY	1	EACH	\$	\$
22	WATER METER RELOCATION	1	EACH	\$	\$
23	WATER METER REPLACEMENT	1	EACH	\$	\$
24	CONNECT TO WATER MAIN (NON-PRESSURE), 6-INCH	3	EACH	\$	\$
25	CONNECT TO WATER MAIN (NON-PRESSURE), 8-INCH	5	EACH	\$	\$
26	CONNECT TO WATER MAIN (NON-PRESSURE), 12-INCH	1	EACH	\$	\$
27	CONNECT TO WATER MAIN (PRESSURE), 12-INCH X 8-INCH	5	EACH	\$	\$
28	GATE VALVE, 8-INCH	16	EACH	\$	\$
29	VALVE BOX	8	EACH	\$	\$
30	VALVE VAULT, 4-FOOT DIAMETER	8	EACH	\$	\$
31	VALVE VAULT, 5-FOOT DIAMETER	5	EACH	\$	\$
32	VALVE VAULT (ADDITIONAL DEPTH), 4-FOOT DIAMETER	5	VFT	\$	\$

BID FORM

00 41 00.41-4 (210039.40) IEPA-PWSLP Revision dated December 8, 2021

SCHEDULE OF UNIT PRICES					
No.	Pay Item	Approximate Quantity		Unit Price	Amount
33	VALVE VAULT (ADDITIONAL DEPTH), 5-FOOT DIAMETER	5	VFT	\$	\$
34	FIRE HYDRANT	9	EACH	\$	\$
35	FIRE HYDRANT BARREL EXTENSION	5	VFT	\$	\$
36	LINE STOP, 6-INCH	5	EACH	\$	\$
37	LINE STOP, 8-INCH	2	EACH	\$	\$
38	LINE STOP, 12-INCH	2	EACH	\$	\$
39	ABANDON EXISTING WATER MAINS AND APPURTENANCES	1	LSUM	\$	\$
40	FILLING OF EXISTING WATER MAIN PIPE FOR ABANDONMENT	4	CUYD	\$	\$
41	SANITARY SEWER REMOVAL AND REPLACEMENT, 8-INCH	51	FOOT	\$	\$
42	STORM SEWER REMOVAL AND REPLACEMENT - 15-INCH	20	FOOT	\$	\$
43	STORM SEWER REMOVAL AND REPLACEMENT, 18-INCH	22	FOOT	\$	\$
44	INLET PROTECTION FILTER	39	EACH	\$	\$
45	TEMPORARY HOT-MIX ASPHALT PAVEMENT	330	SQYD	\$	\$
46	HOT-MIX ASPHALT REMOVAL AND REPLACEMENT, 2.5" BINDER 1.5" SURFACE	3,810	SQYD	\$	\$
47	HOT-MIX ASPHALT REMOVAL AND REPLACEMENT, 10" BINDER 2" SURFACE	150	SQYD	\$	\$
48	HOT-MIX ASPHALT DRIVEWAY REMOVAL AND REPLACEMENT, 3-INCH	150	SQYD	\$	\$
49	PCC DRIVEWAY REMOVAL AND REPLACEMENT, 6-INCH	150	SQYD	\$	\$
50	GRAVEL SHOULDER RESTORATION	150	FOOT	\$	\$
51	CONCRETE CURB AND GUTTER REMOVAL AND REPLACEMENT	400	FOOT		
52	PCC SIDEWALK REMOVAL AND REPLACEMENT	2,000	SQFT	\$	\$
53	DETECTABLE WARNINGS	10	SQFT	\$	\$
54	PAVEMENT MARKING, 6-INCH (THERMOPLASTIC)	210	FOOT	\$	\$
55	PAVEMENT MARKING, 24-INCH (THERMOPLASTIC)	180	FOOT	\$	\$
56	RESTORATION OF LAWNS AND PARKWAYS	700	SQYD	\$	\$

BID FORM

00 41 00.41-5 (210039.40) IEPA-PWSLP Revision dated December 8, 2021

SCHEDULE OF UNIT PRICES					
No.	Pay Item	Approximate Quantity		Unit Price	Amount
57	REMOVE AND REPLACE DRAIN TILES, 6-INCH THROUGH 12-INCH	130	FOOT	\$	\$
58	ADJUSTING SANITARY SEWER SERVICE LINE	14	EACH	\$	\$
59	DUST CONTROL	13	DAY	\$	\$
60	REMOVAL AND REPLACEMENT OF UNSUITABLE MATERIAL	48	CUYD	\$	\$
61	SOIL TESTS FOR CONTAMINANTS	8	EACH	\$	\$
62	CONTAMINATED WASTE DISPOSAL	48	CUYD	\$	\$
63	EXPLORATORY EXCAVATION	7	EACH	\$	\$
64	TREE ROOT PRUNING	3	EACH	\$	\$
65	TREE TRIMMING	1	LSUM	Lump Sum	\$
66	WATER SERVICE LOCATE	1	LSUM	Lump Sum	\$
TOTAL AMOUNT OF BID				\$	

5. Bidder agrees the Work will be substantially completed within 60 calendar days after the Contract Time commences to run as provided in paragraph 2.03 of the General Conditions, and completed and ready for final payment in accordance with Paragraph 1.11 of the Supplementary Conditions within 90 calendar days after the Contract Time commences to run. The estimated Notice to Proceed date is March 1, 2022.
- a. Bidder accepts the provisions of the Supplementary Conditions as to liquidated damages in the event of failure to complete the Work on time.
6. Bidder submits the required Bid Security in the form of (Certified Check or Bid Bond) in the amount of _____ or _____ Percent of the Bid Amount.
7. Bidder will be obtaining Performance and Payment Bonds through the following local agent or broker:
- Name: _____
- Address: _____
- Telephone: _____ email: _____
8. Bidder submits all items listed in Section 00 43 93.41 – Bid Submittal Checklist.
9. Terms used in this Bid which are defined in the Standard General Conditions of the Construction Contract included as part of the Contract Documents have the meanings assigned to them in the General Conditions.

BID FORM

10. Bidder acknowledges receipt of the following Addenda:

<u>Addendum Number</u>	<u>Date Received</u>
_____	_____
_____	_____
_____	_____

11. Bidder certifies that all iron and steel products used in the project for the construction, alteration, maintenance, or repair of a public water system are produced in the United States in compliance with Section 608 of the Water Resources Reform and Development Act”.

12. By submission of the Bid, Bidder certifies, and in the case of a Joint Bid each party thereto certifies as to his own organization, that in connection with the Bid:

- a. The prices in the Bid have been arrived at independently, without consultation, communication, or agreement, for the purpose of restricting competition, as to any matter relating to such prices with any other Bidder or with any competitor.
- b. Unless otherwise required by law, the prices which have been quoted in the Bid have not knowingly been disclosed by the Bidder, prior to opening, directly, or indirectly to any other Bidder or to any competitor; and
- c. No attempt has been made or will be made by the Bidder to induce any other person or firm to submit or not to submit a Bid for the purpose of restricting competition.

13. The person signing this Bid certifies that: (Check applicable box.)

- He/She is the person in the Bidder's organization responsible within that organization for the decision as to the prices being bid and that he/she has not participated, and will not participate, in any action contrary to that above; or
- He/She is not the person in the Bidder's organization responsible within that organization for the decision as to the prices being bid but that he/she has been authorized to act as agent for the persons responsible for such decision in certifying that such persons have not participated, and will not participate, in any action contrary to that above, and as their agent shall so certify; and shall also certify that he/she has not participated, and will not participate, in any action contrary to that above.

14. Bidder is currently certified as an MBE or WBE under EPA's DBE program?
Yes No

Respectfully submitted, signed, and sealed this _____ day of _____, 20__.

(SEAL)

Bidder
By _____

Name - Title

ATTEST:

Name - Title

END OF BID FORM