

ADDENDUM No. 1

TO: All Potential Bidders

PROJECT: **City of Joliet, 2021 Sanitary Sewer Point Repairs- Various Locations**

BID OPENING: Friday, August 27, 2021, 9:00 A.M.

The following is a list of changes to the above-referenced project. Please indicate your acknowledgment of Addendum No. 1 by executing the attached acknowledgement form and submitting it with your bid. Bidder shall also state on the envelope of the Bid that he or she is in receipt of Addendum #1.

ADDENDUM No. 1 CONSISTS OF (8) PAGES IN TOTAL: In addition to the (3) addendum pages, there are (5) pages of Plans.

CHANGE THE FOLLOWING ITEMS IN THE PLAN SHEETS:

1. Cover Sheet

DELETE Cover Sheet

INSERT Revised Cover Sheet

2. Sheet 5

DELETE Sheet 5 – MAY ST POINT REPAIR

INSERT Sheet 5R – MAY ST POINT REPAIR

3. Sheet 8

DELETE Sheet 8 – DORIS AVE POINT REPAIR

INSERT Sheet 8R – DORIS AVE POINT REPAIR

4. Sheet 9

DELETE Sheet 9 – GLEN ST POINT REPAIR

INSERT Sheet 9R – GLEN ST POINT REPAIR

5. Sheet 11

DELETE Sheet 11 – WATER ST POINT REPAIR

INSERT Sheet 11R – WATER ST POINT REPAIR

CITY OF JOLIET

**PROJECT: City of Joliet,
2021 SANITARY SEWER POINT REPAIRS- VARIOUS
LOCATIONS**

BID OPENING: Friday, August 27, 2021, 9:00 A.M.

ADDENDUM NO. 1

Instructions: Please sign and date this receipt as acknowledgement of ADDENDUM NO.1 for the above-referenced project and submit it with your bid.

Failure to acknowledge receipt of ADDENDUM NO.1 may result in Contractor's BID being considered non-compliant.

Bidder shall also state on the OUTSIDE of the bid submittal envelope that he or she is in receipt of addendum #1 or your bid may not be opened

Signature: _____

Name: _____

Company: _____

Position: _____

Date: _____

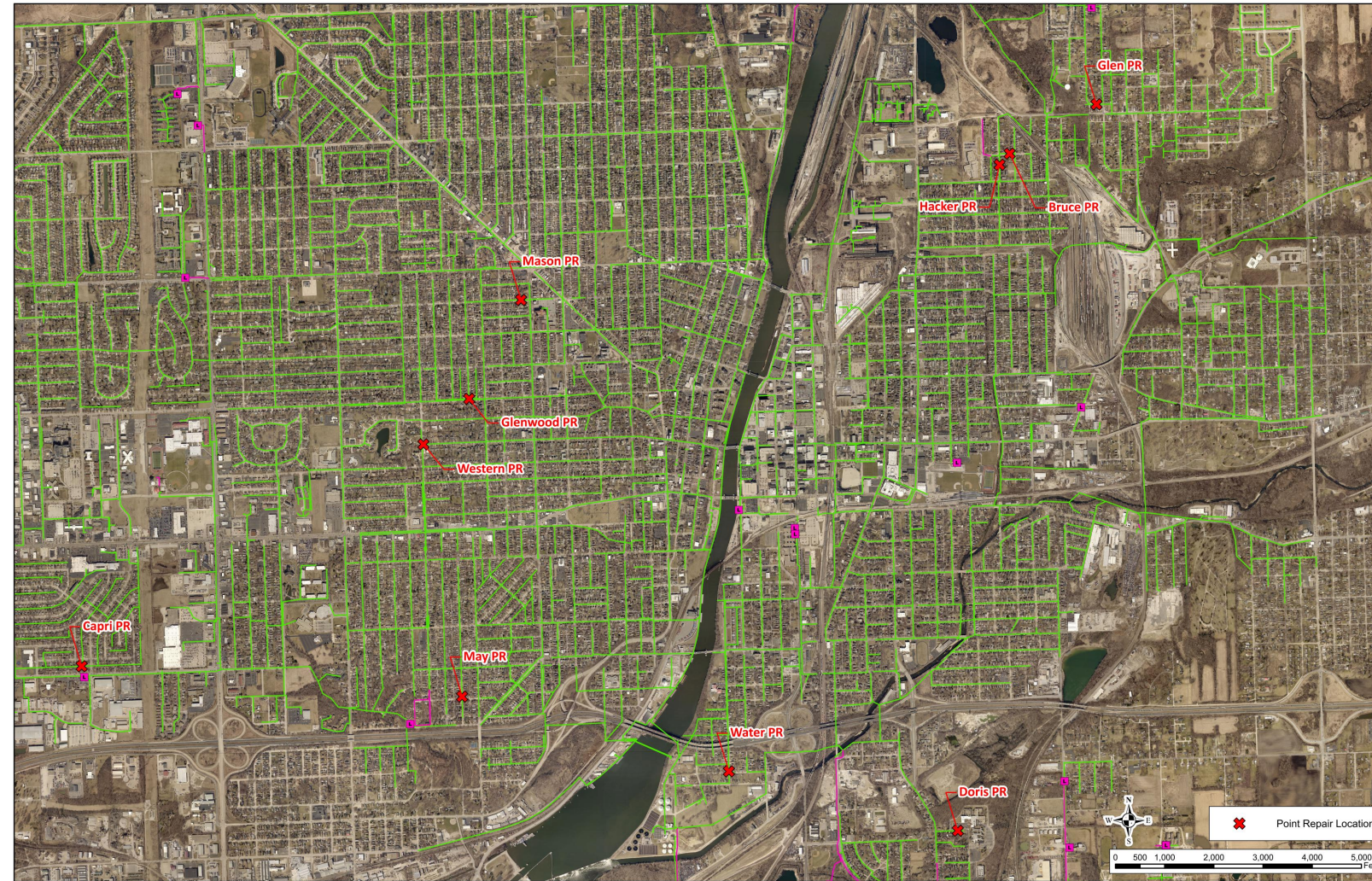


CITY OF JOLIET 2021 SANITARY SEWER POINT REPAIRS - VARIOUS LOCATIONS



INDEX OF SHEETS

1	COVER
2	GENERAL NOTES
3	SOQ & POINT REPAIR SCHEDULE
4	MASON AVE POINT REPAIR
5R	MAY ST POINT REPAIR
6	HACKER AVE POINT REPAIR
7	BRUCE ST POINT REPAIR
8R	DORIS AVE POINT REPAIR
9R	GLEN ST POINT REPAIR
10	CAPRI AVE POINT REPAIR
11R	WATER ST POINT REPAIR
12	GLENWOOD AVE POINT REPAIR
13	WESTERN AVE POINT REPAIR
14-15	DETAILS



LOCATION MAP
(NOT TO SCALE)

AUGUST 2021

ADDENDUM 1 8/24/21

FULL SIZE PLANS HAVE BEEN PREPARED USING STANDARD ENGINEERING SCALES. REDUCED SIZED PLANS WILL NOT CONFORM TO STANDARD SCALES.

**FOR UNDERGROUND UTILITY LOCATIONS CALL
J.U.L.I.E. 1-800-892-0123**



Owen Dean

11/30/2021

REGISTERED P.E., STATE OF ILLINOIS

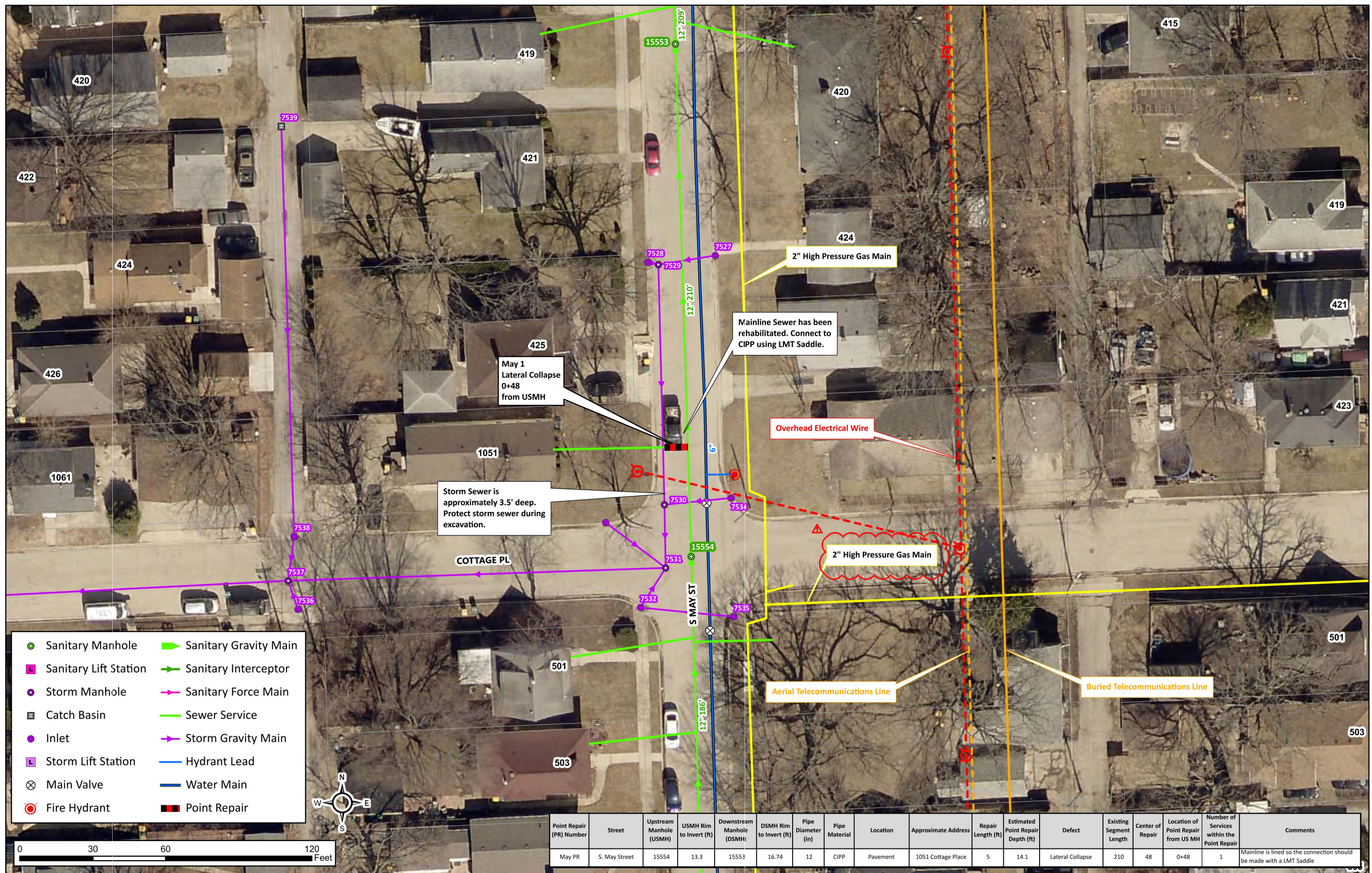
EXPIRES



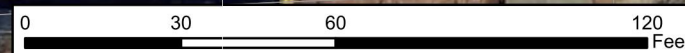
LICENSE #184.000813-0002
EXPIRES 4/30/2023

200 W. FRONT STREET
WHEATON, IL 60187

\\hp-panzura\office-11\WHEATON\PROJECTS\Johel_LL11368900\Johel - 2021 Sewer Investigations & Rehabilitation Program\Design\2.0 CAD\Sheets\4 May St Point Repair.dwg



- Sanitary Manhole
- Sanitary Lift Station
- Storm Manhole
- Catch Basin
- Inlet
- Storm Lift Station
- ⊗ Main Valve
- Fire Hydrant
- ➔ Sanitary Gravity Main
- ➔ Sanitary Interceptor
- ➔ Sanitary Force Main
- ➔ Sewer Service
- ➔ Storm Gravity Main
- ➔ Hydrant Lead
- ➔ Water Main
- Point Repair



Point Repair (PR) Number	Street	Upstream Manhole (USMH)	USMH Rim to Invert (ft)	Downstream Manhole (DSMH)	DSMH Rim to Invert (ft)	Pipe Diameter (in)	Pipe Material	Location	Approximate Address	Repair Length (ft)	Estimated Point Repair Depth (ft)	Defect	Existing Segment Length	Center of Repair	Location of Point Repair from US MH	Number of Services within the Point Repair	Comments
May PR	S. May Street	15554	13.3	15553	16.74	12	CIPP	Pavement	1051 Cottage Place	5	14.1	Lateral Collapse	210	48	0+48	1	Mainline is lined so the connection should be made with a LMT Saddle

\\hp-panzura\office-11\WHEATON\PROJECTS\Johel_LL11368900\Johel - 2021 Sewer Investigations & Rehabilitation Program\3.0 GIS\Map Documents\Map Documents - Exhibits\Point Repair Design\2021 Point Repair Design - UPDATED.aprx - Date Printed: 8/26/2021 12:53 PM

DESIGNED: OD	ADDENDUM 1: 8/24/21
DRAWN: CR	
CHECKED: OD	
DATE: AUGUST 2021	

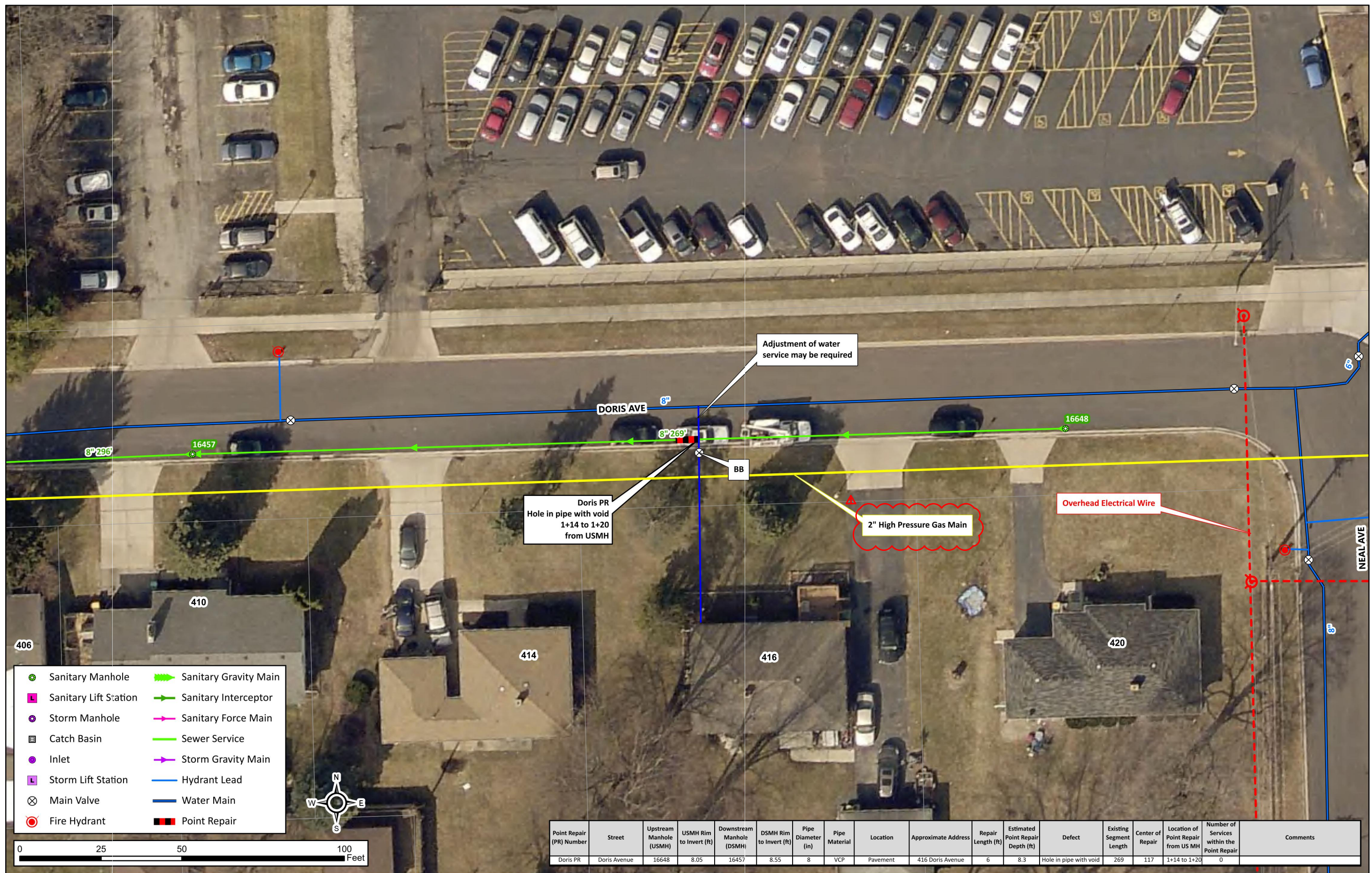


2021 SANITARY SEWER POINT REPAIRS – VARIOUS LOCATIONS

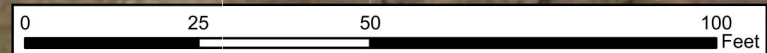
MAY ST POINT REPAIR

SCALES	COUNTY	TOTAL SHEETS	SHEET NO.
HORIZONTAL:	WILL	15	5R
VERTICAL:	STA.	TO STA.	
PROJECT NO. 11-3689-00			

\\he-panzara\office-11\WHEATON\PROJECTS\Johel_LL11368900_Johel - 2021 Sewer Investigations & Rehabilitation Program\Design\2.0 CAD\Sheets\7 Doris Ave.dwg



- | | |
|-------------------------|-------------------------|
| ⊕ Sanitary Manhole | → Sanitary Gravity Main |
| ⊕ Sanitary Lift Station | → Sanitary Interceptor |
| ⊕ Storm Manhole | → Sanitary Force Main |
| ⊕ Catch Basin | → Sewer Service |
| ⊕ Inlet | → Storm Gravity Main |
| ⊕ Storm Lift Station | → Hydrant Lead |
| ⊗ Main Valve | → Water Main |
| ⊕ Fire Hydrant | ▬ Point Repair |



Point Repair (PR) Number	Street	Upstream Manhole (USMH)	USMH Rim to Invert (ft)	Downstream Manhole (DSMH)	DSMH Rim to Invert (ft)	Pipe Diameter (in)	Pipe Material	Location	Approximate Address	Repair Length (ft)	Estimated Point Repair Depth (ft)	Defect	Existing Segment Length	Center of Repair	Location of Point Repair from US MH	Number of Services within the Point Repair	Comments
Doris PR	Doris Avenue	16648	8.05	16457	8.55	8	VCP	Pavement	416 Doris Avenue	6	8.3	Hole in pipe with void	269	117	1+14 to 1+20	0	

\\he-panzara\office-11\WHEATON\PROJECTS\Johel_LL11368900_Johel - 2021 Sewer Investigations & Rehabilitation Program\GIS\Map Documents\Map Documents - Exhibits\Point Repair Design\2021 Point Repair Design - UPDATED.aprx - Date Printed: 8/26/2021 11:00 AM

DESIGNED: OD	▲ ADDENDUM 1: 8/24/21
DRAWN: CR	
CHECKED: OD	
DATE: AUGUST 2021	

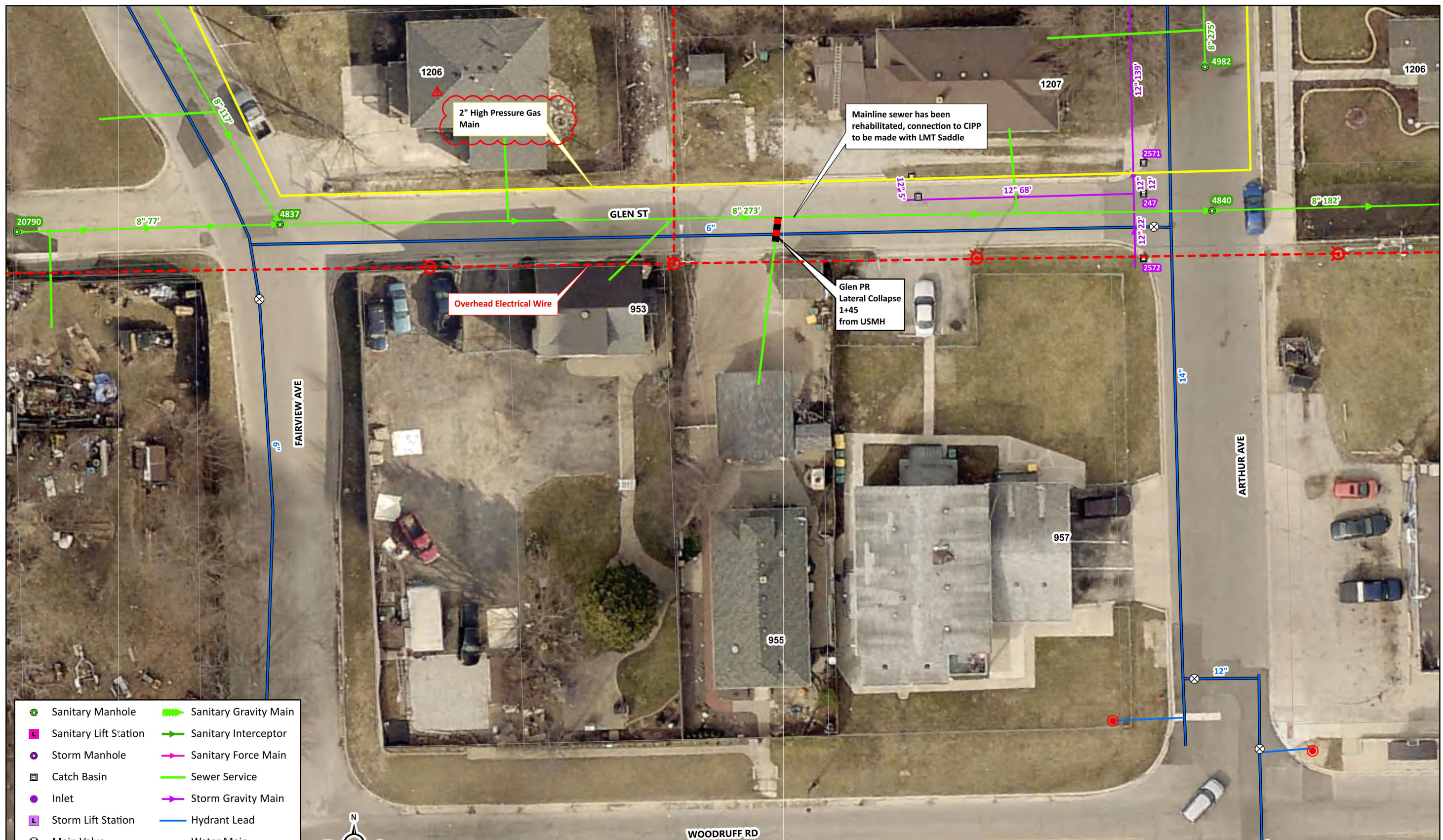


2021 SANITARY SEWER POINT REPAIRS – VARIOUS LOCATIONS

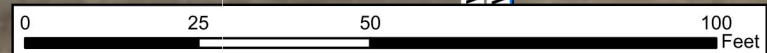
DORIS AVE POINT REPAIR

DESIGNED: OD	▲ ADDENDUM 1: 8/24/21	SCALE	COUNTY	TOTAL SHEETS	SHEET NO.
DRAWN: CR		HORIZONTAL:	WILL	15	8R
CHECKED: OD		VERTICAL:	STA.	TO STA.	
DATE: AUGUST 2021		PROJECT NO.	11-3689-00		

\\whe-panzura\office-11\WHEATON\PROJECTS\Johel_LL11368900_Johel - 2021 Sewer Investigations & Rehabilitation Program\Design\2.0 CAD\Sheets\8 Glen St Point Repair.dwg



- ⊕ Sanitary Manhole
- ⊕ Sanitary Gravity Main
- L Sanitary Lift Station
- Sanitary Interceptor
- ⊕ Storm Manhole
- Sanitary Force Main
- ⊕ Catch Basin
- Sewer Service
- Inlet
- Storm Gravity Main
- L Storm Lift Station
- Hydrant Lead
- Water Main
- ⊗ Main Valve
- ⊗ Fire Hydrant
- Point Repair



Point Repair (PR) Number	Street	Upstream Manhole (USMH)	USMH Rim to Invert (ft)	Downstream Manhole (DSMH)	DSMH Rim to Invert (ft)	Pipe Diameter (in)	Pipe Material	Location	Approximate Address	Repair Length (ft)	Estimated Point Repair Depth (ft)	Defect	Existing Segment Length	Center of Repair	Location of Point Repair from US MH	Number of Services within the Point Repair	Comments
Glen PR	Glen Street	4837	13.37	4840	8.35	8	CIPP	Pavement	955 Woodruff Road	6	10.7	Lateral Collapse	273	145	1+45	1	Mainline is lined so the connection should be made with a LMT Saddle

\\whe-panzura\office-11\WHEATON\PROJECTS\Johel_LL11368900_Johel - 2021 Sewer Investigations & Rehabilitation Program\2.0 GIS\Map Documents\Map Documents - Exhibits\Point Repair Design\2021 Point Repair Design - UPDATED.aprx - Date Printed: 8/26/2021 12:18 PM

DESIGNED: OD	▲ ADDENDUM 1: 8/24/21
DRAWN: CR	
CHECKED: OD	
DATE: AUGUST 2021	

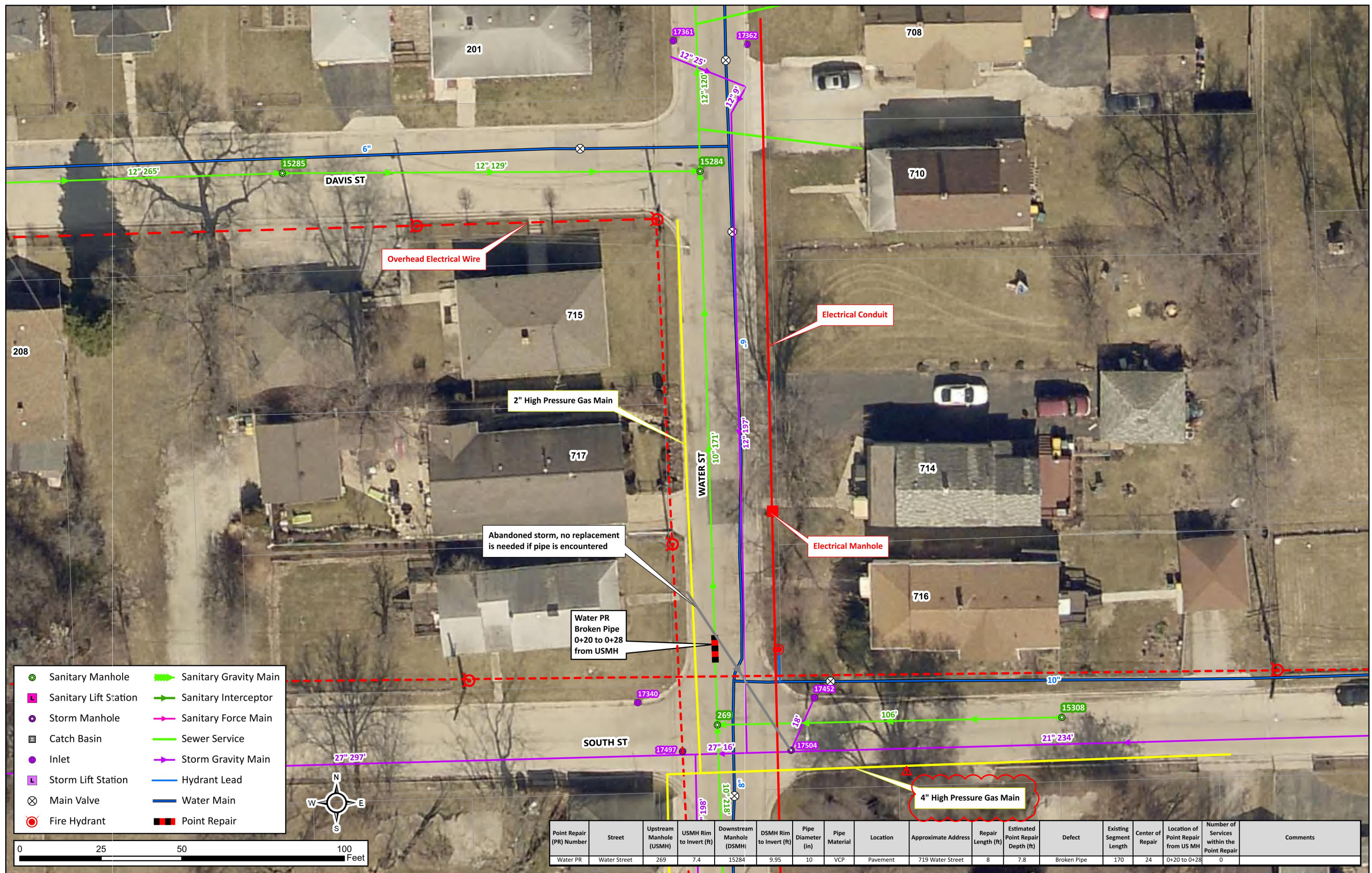


2021 SANITARY SEWER POINT REPAIRS – VARIOUS LOCATIONS

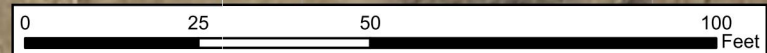
GLEN ST POINT REPAIR

SCALES	COUNTY	TOTAL SHEETS	SHEET NO.
HORIZONTAL:	WILL	15	9R
VERTICAL:	STA.	TO STA.	
PROJECT NO. 11-3689-00			

\\hp-panzara\office-11\WHEATON\PROJECTS\Johel - 2021 Sewer Investigations & Rehabilitation Program\Design\2.0 CAD\Sheets\10 Water St Point Repair.dwg



- Sanitary Manhole
- L Sanitary Lift Station
- Storm Manhole
- Catch Basin
- Inlet
- L Storm Lift Station
- Main Valve
- Fire Hydrant
- Sanitary Gravity Main
- Sanitary Interceptor
- Sanitary Force Main
- Sewer Service
- Storm Gravity Main
- Hydrant Lead
- Water Main
- Point Repair



Point Repair (PR) Number	Street	Upstream Manhole (USMH)	USMH Rim to Invert (ft)	Downstream Manhole (DSMH)	DSMH Rim to Invert (ft)	Pipe Diameter (in)	Pipe Material	Location	Approximate Address	Repair Length (ft)	Estimated Point Repair Depth (ft)	Defect	Existing Segment Length	Center of Repair	Location of Point Repair from US MH	Number of Services within the Point Repair	Comments
Water PR	Water Street	269	7.4	15284	9.95	10	VCP	Pavement	719 Water Street	8	7.8	Broken Pipe	170	24	0+20 to 0+28	0	

\\hp-panzara\office-11\WHEATON\PROJECTS\Johel - 2021 Sewer Investigations & Rehabilitation Program\2.0 GIS\Map Documents\Map Documents - Exhibits\Point Repair Design\2021 Point Repair Design - UPDATED.aprx - Date Printed: 8/26/2021 1:41 PM

DESIGNED: OD	ADDENDUM 1: 8/24/21
DRAWN: CR	
CHECKED: OD	
DATE: AUGUST 2021	



2021 SANITARY SEWER POINT REPAIRS – VARIOUS LOCATIONS

WATER ST POINT REPAIR

DESIGNED: OD	ADDENDUM 1: 8/24/21	SCALE	COUNTY	TOTAL SHEETS	SHEET NO.
DRAWN: CR		HORIZONTAL:	WILL	15	11R
CHECKED: OD		VERTICAL:	STA.	TO STA.	
DATE: AUGUST 2021		PROJECT NO.	11-3689-00		