

A large green mannequin in a space suit stands on a street, holding a rocket labeled "Launching Pad". Several people, including a police officer and a woman taking a photo, are gathered around. Motorcycles are parked on the street. The background shows a residential street with trees and a house.

Imagine the Possibilities

CORRIDOR PLAN FOR
IL ROUTE 53, WILL COUNTY, IL

Prime Consultant and Lead Planner GINKGO Planning & Design
Tourism & Hospitality HVS
Transportation KLOA
Economic Strategy SB Friedman
Destination Architecture RTKL

Final Stakeholders Forum May

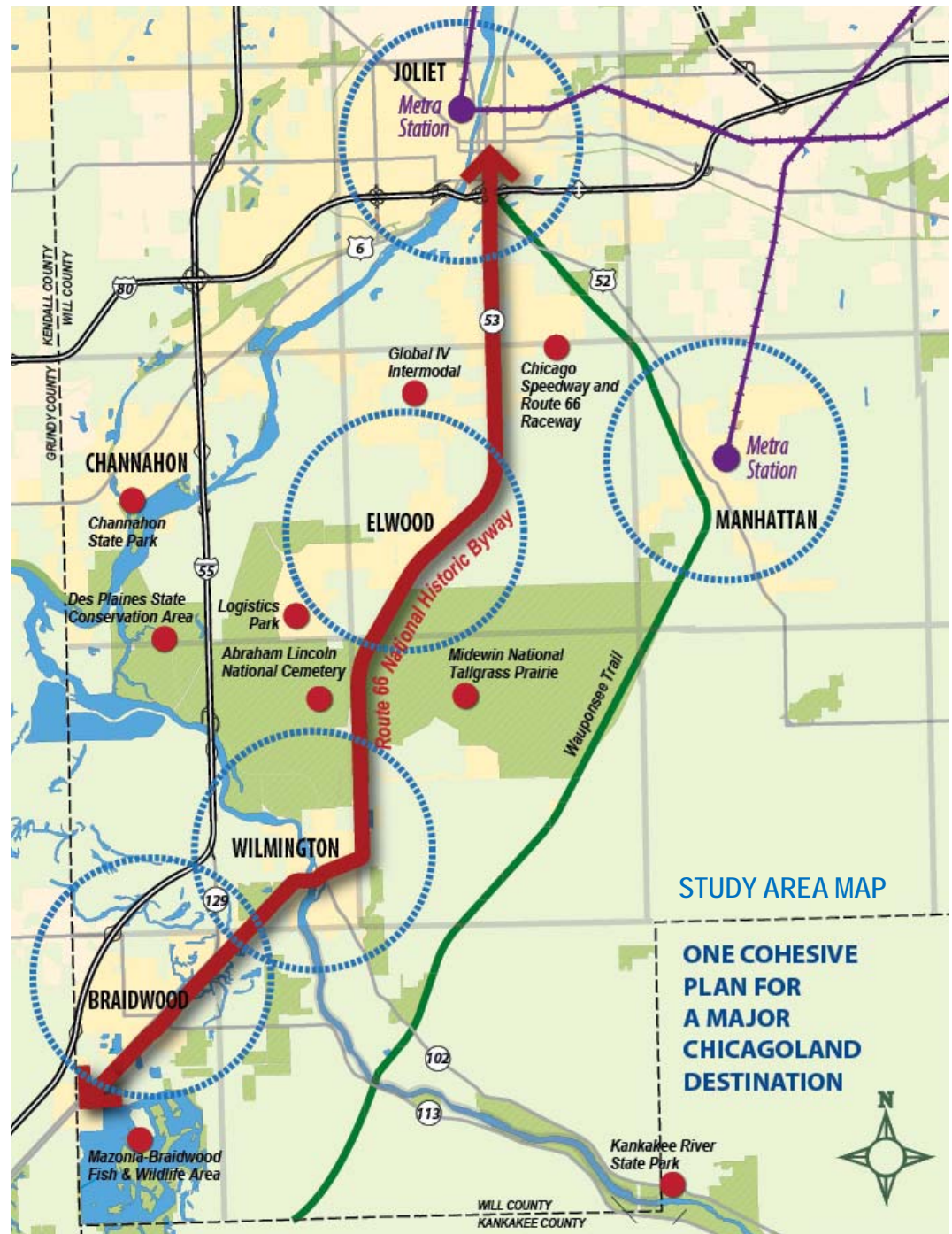
21, 2013

1
ONE PLAN THAT
BENEFITS EVERYONE

2
AN ECONOMIC ENGINE
FOR THE REGION

3
A MAJOR TOURISM
DESTINATION IN
ILLINOIS

PROJECT **GOALS**

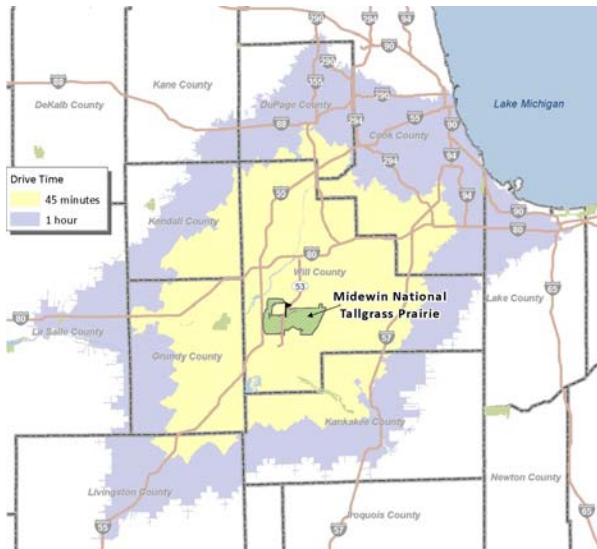




THE TOURISM POTENTIAL



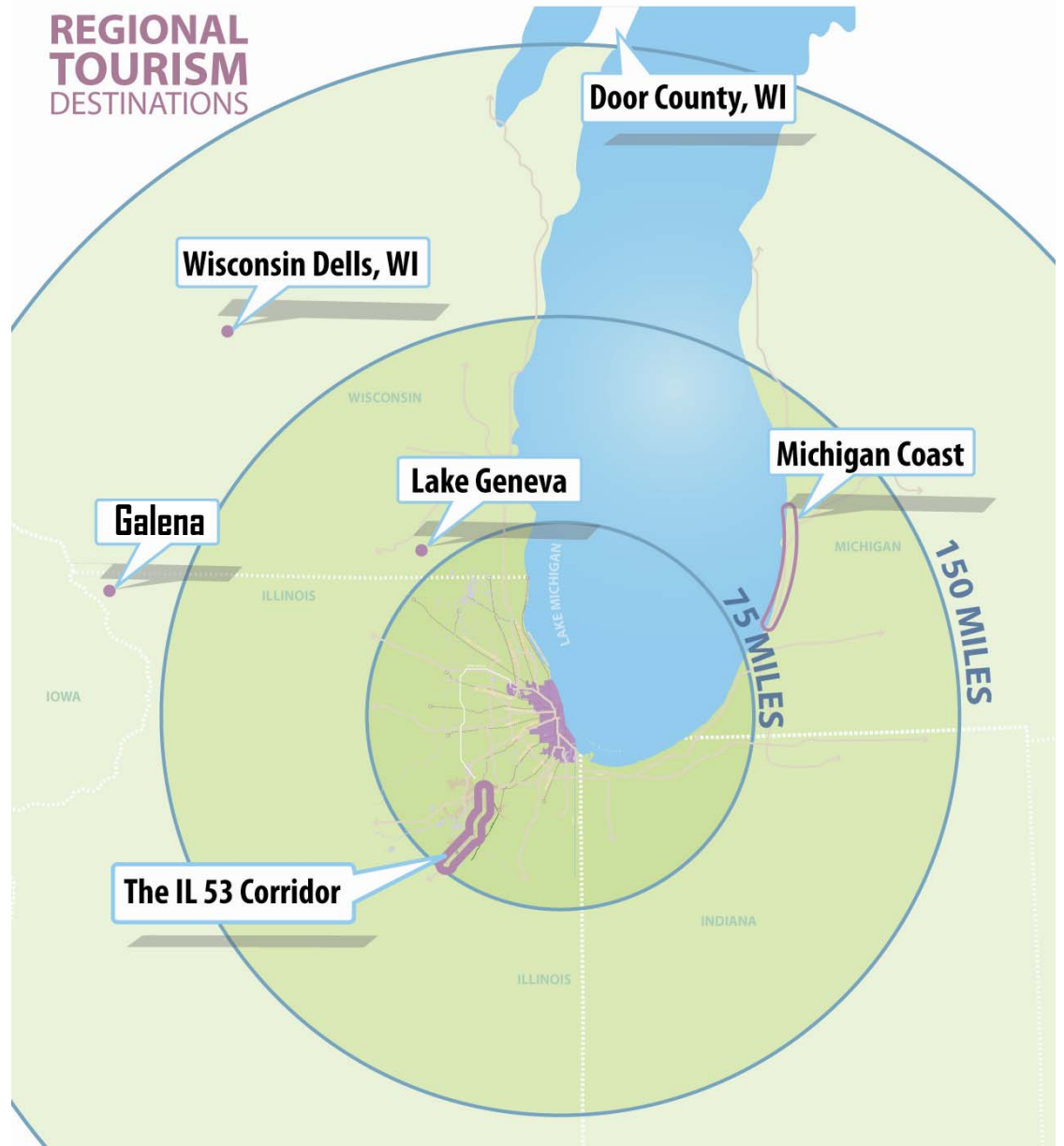
Imagine the Possibilities.



OVER

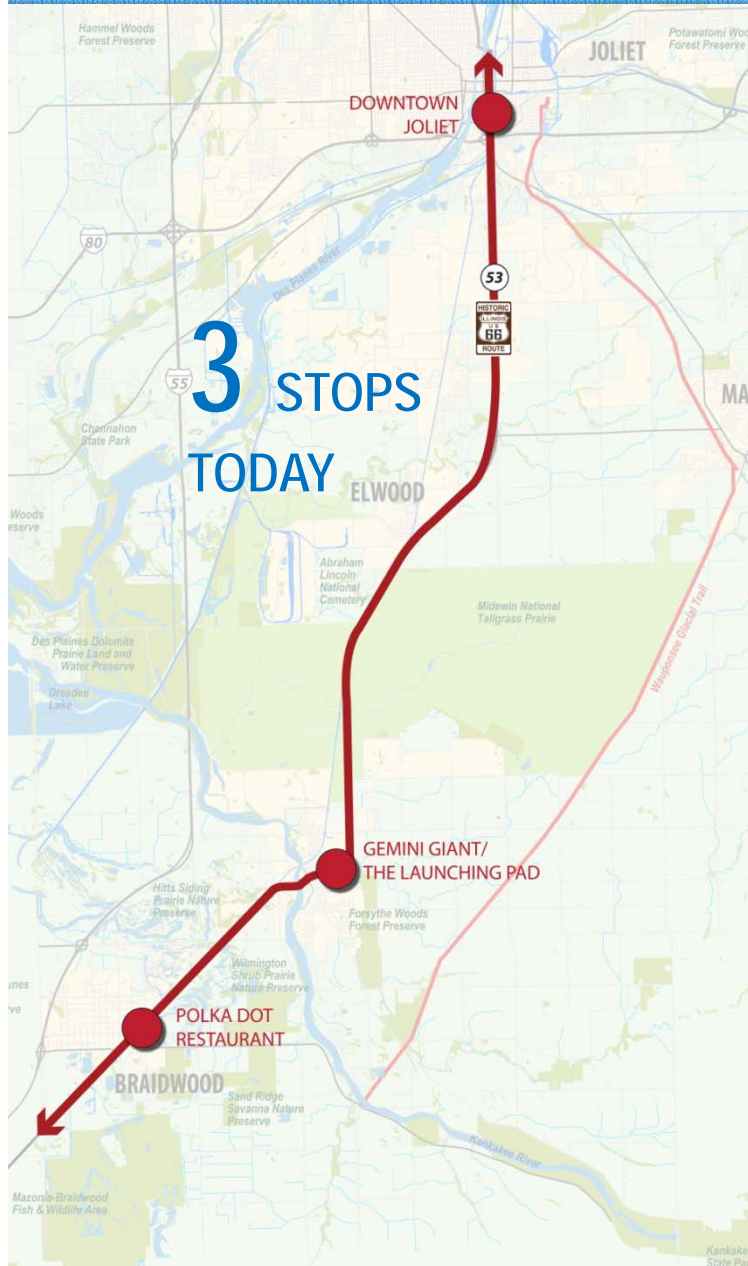
4 MILLION

RESIDENTS LIVE WITHIN ONE HOUR OF THE CORRIDOR



25 miles of HISTORIC **ROUTE 66**

BIG BOLD MOVES ARE NEEDED TO MAKE ROUTE 66 AN ECONOMIC ENGINE





THE PLAN

6 STOPS ON 66



Imagine the Possibilities.

6 STOPS ON 66 IL 53 CORRIDOR PLAN

1 ROUTE 66 NORTH GATEWAY STOP
A WELL DEFINED ENTRANCE TO THE CORRIDOR

GATEWAY IDEAS: COURTESY OF CHICAGOLAND SPEEDWAY

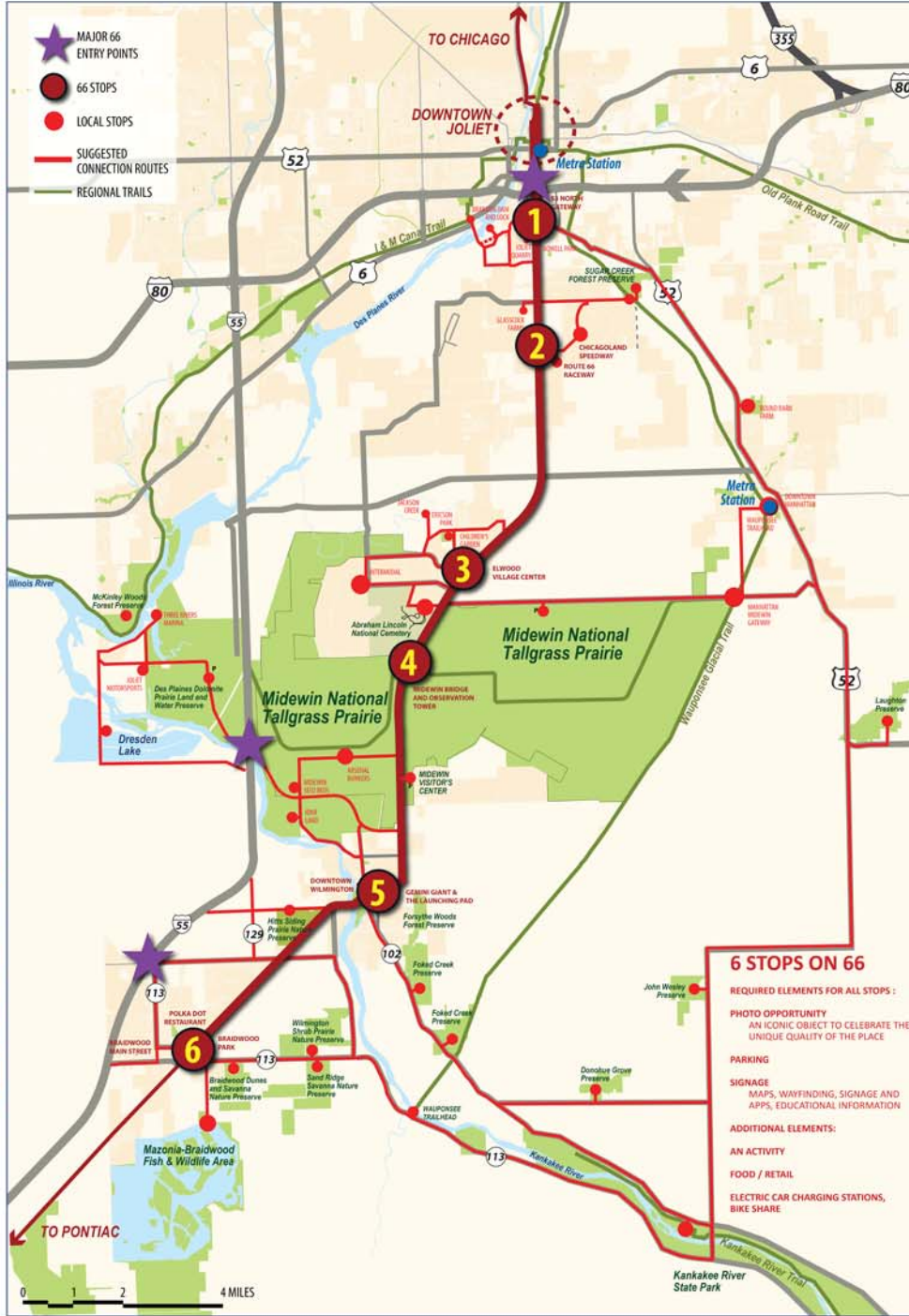
1 ROUTE 66 NORTH GATEWAY STOP
POSITION LOCAL ASSETS AS ROUTE 66 STOPS

HISTORIC WAGON TRAIL AND LOCAL A MILKER IN STOP

2 ROUTE 66 SPORTS VENUES STOP
CELEBRATE RACING

3 ROUTE 66 ELWOOD STOP
CELEBRATE FREIGHT

4 ROUTE 66 MIDWIN STOP
CREATE ICONIC TOWER AND BRIDGE



6 STOPS ON 66

- REQUIRED ELEMENTS FOR ALL STOPS:**
- PHOTO OPPORTUNITY**
AN ICONIC OBJECT TO CELEBRATE THE UNIQUE QUALITY OF THE PLACE
 - PARKING**
 - SIGNAGE**
MAPS, WAYFINDING, SIGNAGE AND APPS, EDUCATIONAL INFORMATION
- ADDITIONAL ELEMENTS:**
- AN ACTIVITY**
 - FOOD / RETAIL**
 - ELECTRIC CAR CHARGING STATIONS, BIKE SHARE**

4 ROUTE 66 MIDWIN STOP
CREATE ICONIC TOWER AND BRIDGE

5 PRESERVE
ROUTE 66 WILMINGTON STOP
GEMINI GIANT AND THE LAUNCHING PAD

5 CELEBRATE THE ISLAND and DOWNTOWN
ROUTE 66 WILMINGTON STOP

6 PRESERVE THE POLKA DOT AND CREATE THE NEW GATEWAY PARK
ROUTE 66 BRAIDWOOD STOP

6 NEW BRAIDWOOD PARK AND PETTING ZOO SCULPTURE
ROUTE 66 BRAIDWOOD STOP

ROUTE 66 **MIDEWIN STOP**

MAJOR ELEMENTS

1. OBSERVATION TOWER
2. NEW MIDEWIN TRAIL BRIDGE
3. BISON HERD PASTURE
4. PRAIRIE LEARNING CENTER
5. POSSIBLE SOUTH ENTRANCE TO ABRAHAM LINCOLN NATIONAL CEMETERY

SUPPORT FACILITIES & SERVICES

- PARKING NEAR OBSERVATION TOWER AND BRIDGE
- Existing Parking at Iron Bridge Trailhead
- MIDEWIN VISITOR TRAM
- BIKE SHARE STATION
- ZIP CAR STATION
- GEOCHACHING STOP
- SIGNAGE, WAYFINDING, APPS

TRAILS

- ROUTE 66 TRAIL WITHIN IL 53 ROW
- MIDEWIN TRAIL CONNECTING WELCOME CENTER TO IRON BRIDGE TRAILHEAD





The **NORTH GATEWAY** to the Corridor



Imagine the Possibilities.

NORTH END ROUTE 66 / IL 53 CORRIDOR

1. HICKORY CREEK BRIDGE
2. RAILROAD BRIDGE
3. FORMER QUARRY
4. NOWELL PARK
5. BRANDON DAM AND LOCK
6. WATERFRONT SITE
7. WAUPONSEE TRAIL
8. I & M CANAL TRAIL



ROUTE 66 NORTH GATEWAY STOP
CELEBRATE THE SPIRIT OF ROUTE 66



ROUTE 66 NORTH GATEWAY STOP
A WELL DEFINED ENTRANCE TO THE CORRIDOR



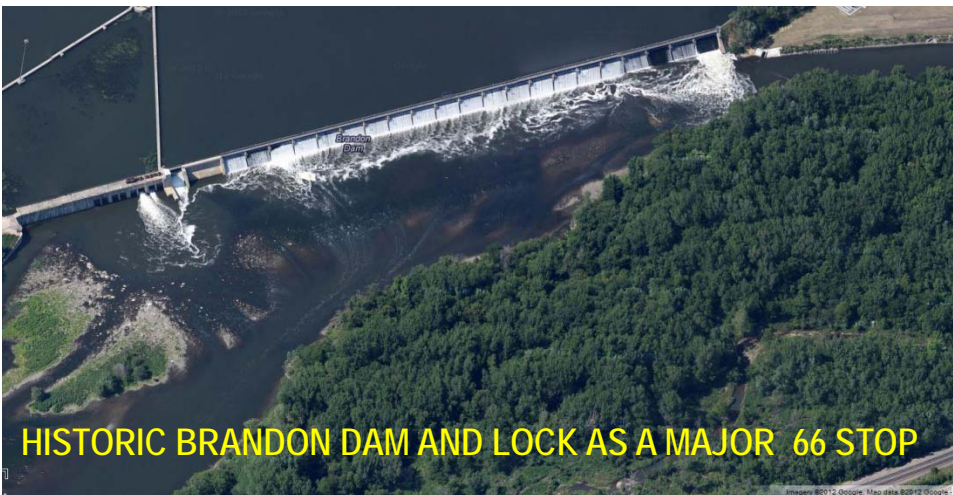
GATEWAY IDEAS: COURTESY OF CHICAGOLAND SPEEDWAY

ROUTE 66 NORTH GATEWAY STOP
A WELL DEFINED ENTRANCE TO THE CORRIDOR



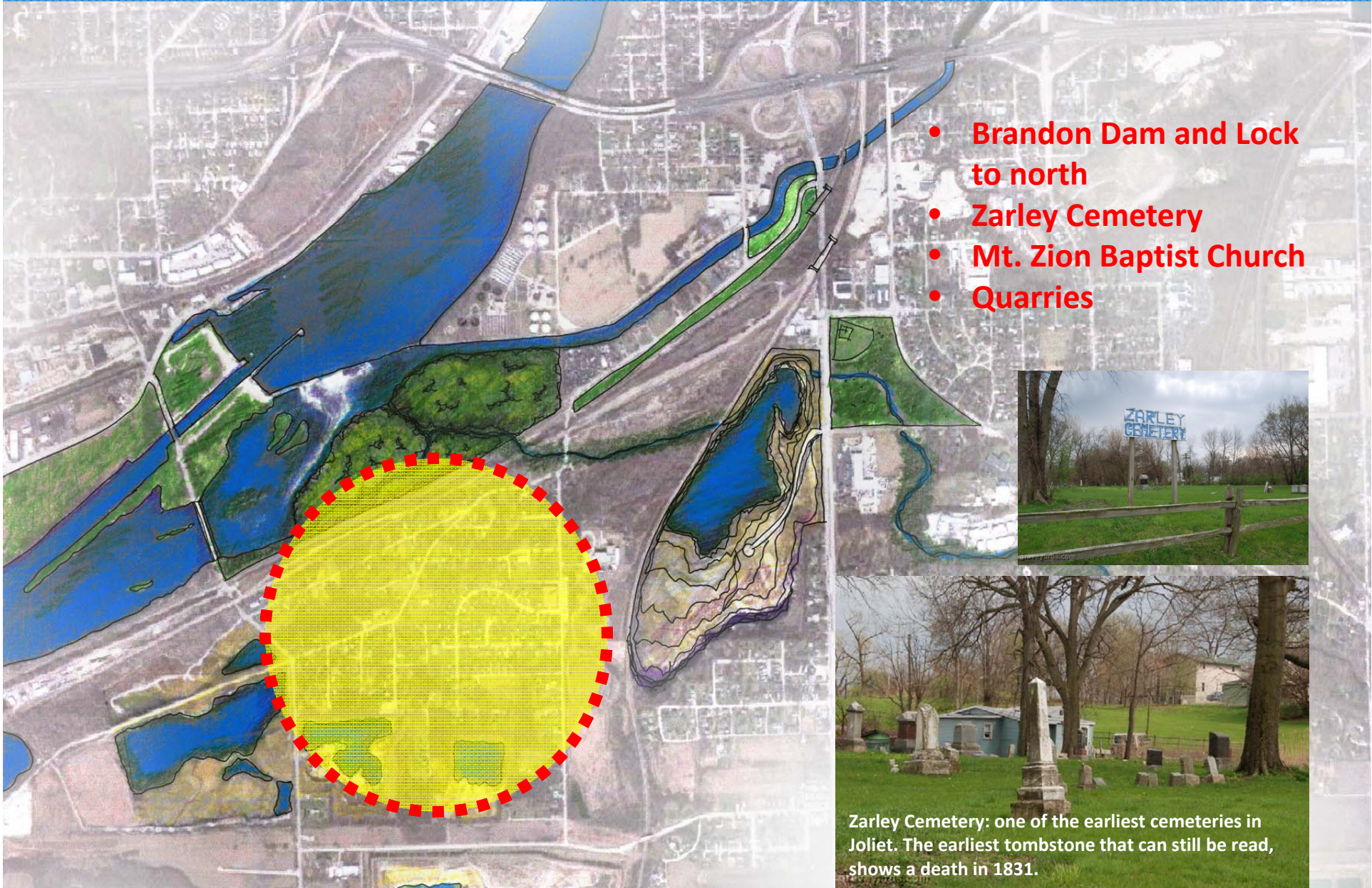
GATEWAY IDEAS: COURTESY OF CHICAGOLAND SPEEDWAY

ROUTE 66 NORTH GATEWAY STOP POSITION LOCAL ASSETS AS ROUTE 66 STOPS

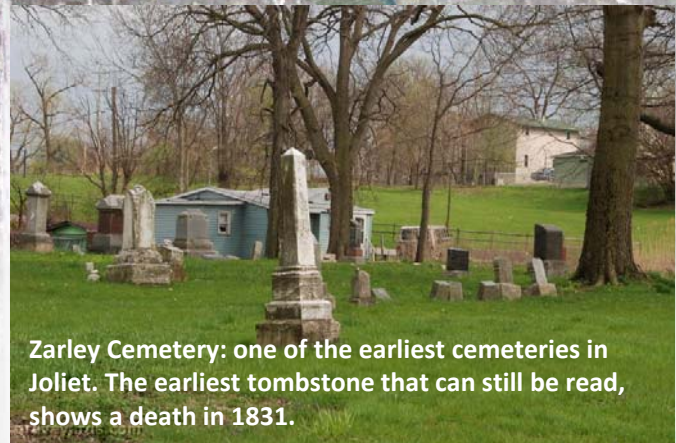


A POSITIVE IMPACT ON THE PATTERSON NEIGHBORHOOD

ROUTE 66 NORTH GATEWAY STOP

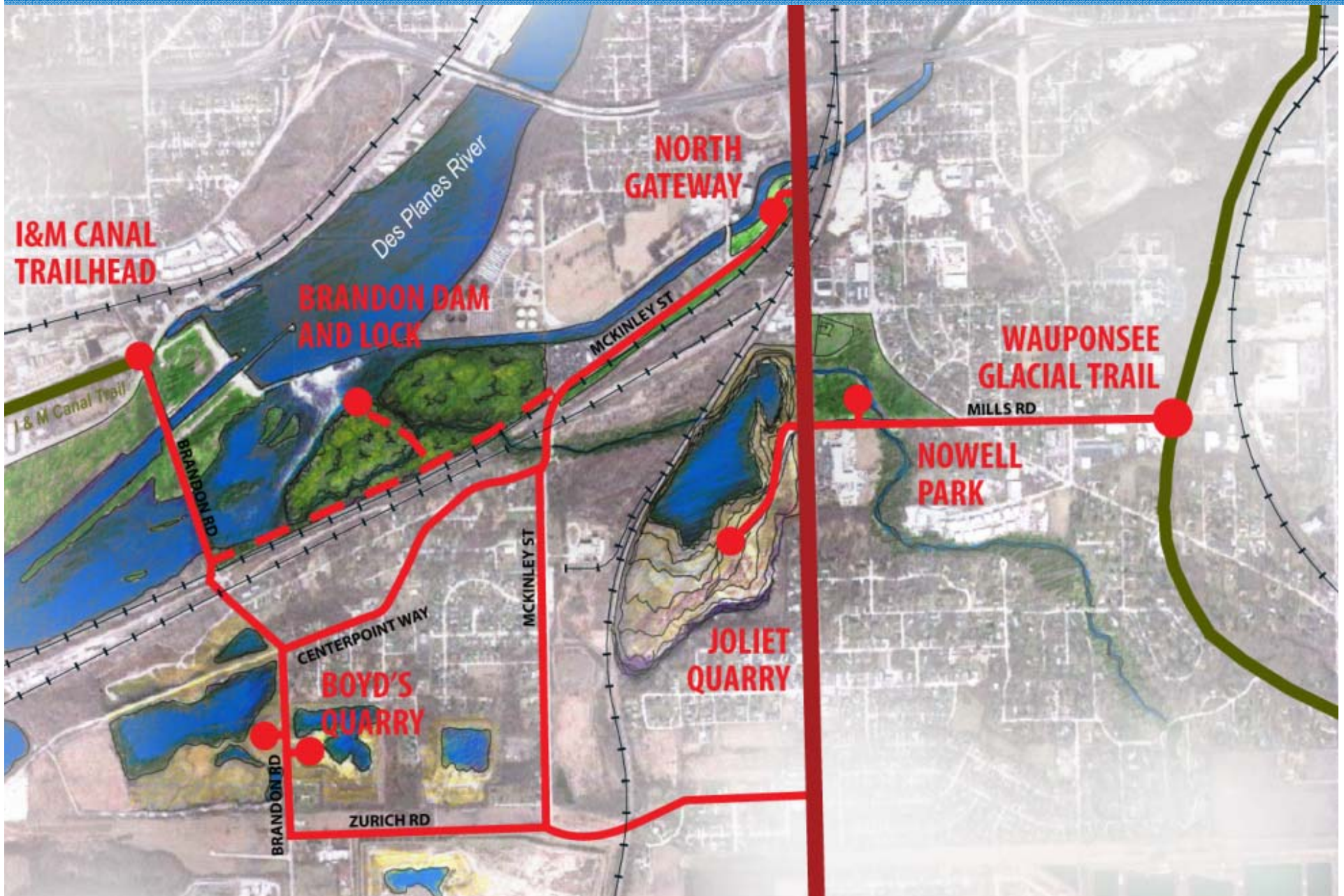


- Brandon Dam and Lock to north
- Zarley Cemetery
- Mt. Zion Baptist Church
- Quarries



Zarley Cemetery: one of the earliest cemeteries in Joliet. The earliest tombstone that can still be read, shows a death in 1831.

ROUTE 66 NORTH GATEWAY STOP





The SPORTS VENUES STOP on Route 66



Imagine the Possibilities.

OPPORTUNITY AREAS SPORTS VENUES

1. SPEEDWAY
2. RACEWAY
3. FPDWC AND SUGAR CREEK PRESERVE
4. FARM LAND
5. WAUPONSEE TRAIL



ROUTE 66 SPORTS VENUES STOP
CELEBRATE RACING



PROPOSED TRAVEL CENTER ON ROUTE 66

PROPOSED TRAVEL CENTER (under review by the City of Joliet)

- GAS FOR TRUCKS AND CARS, PARKING (NO OVERNIGHT PARKING)
- ROUTE 66 THEMED BUILDING (5,700 SF APPROX.)
- DUNKIN DONUTS
- POP'S ITALIAN BEEF SANDWICH COUNTER
- INDOOR SEATING AREA FR ABOUT 25 PEOPLE
- BIKE TRAIL AND LANDSCAPING ALONG ROUTE 66/ IL 53





Authentic Small Towns on 66

Elwood, Wilmington & Braidwood Stops



ROUTE 66 ELWOOD STOP
CELEBRATE MANUFACTURING AND INDUSTRY



ROSIE THE RIVETER





ROUTE 66 **ELWOOD STOP**
CELEBRATE FREIGHT



PRESERVE

ROUTE 66 WILMINGTON STOP
GEMINI GIANT AND THE LAUNCHING PAD



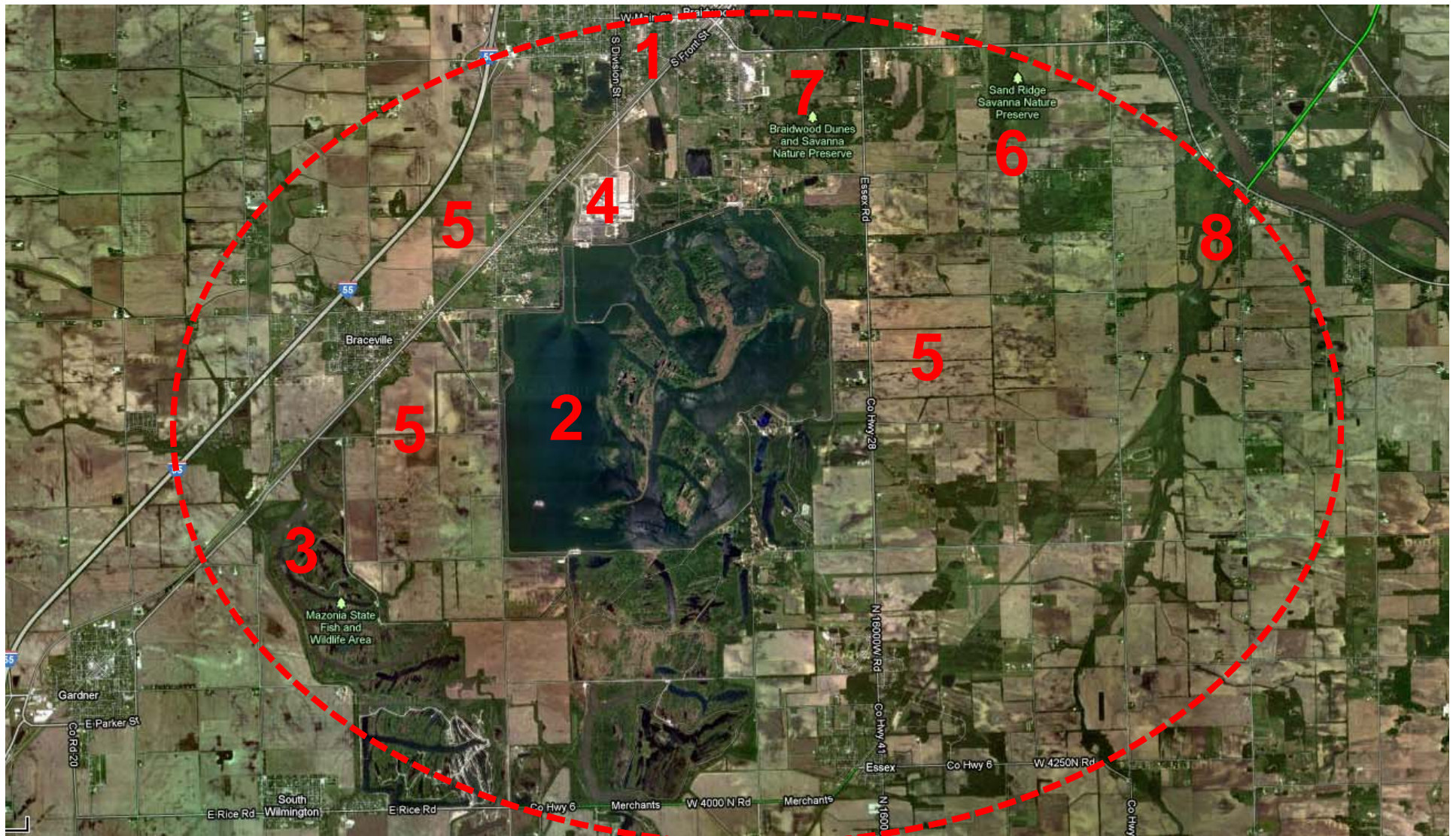
A NEW KAYAK COURSE AT THE WILMINGTON MILL RACE



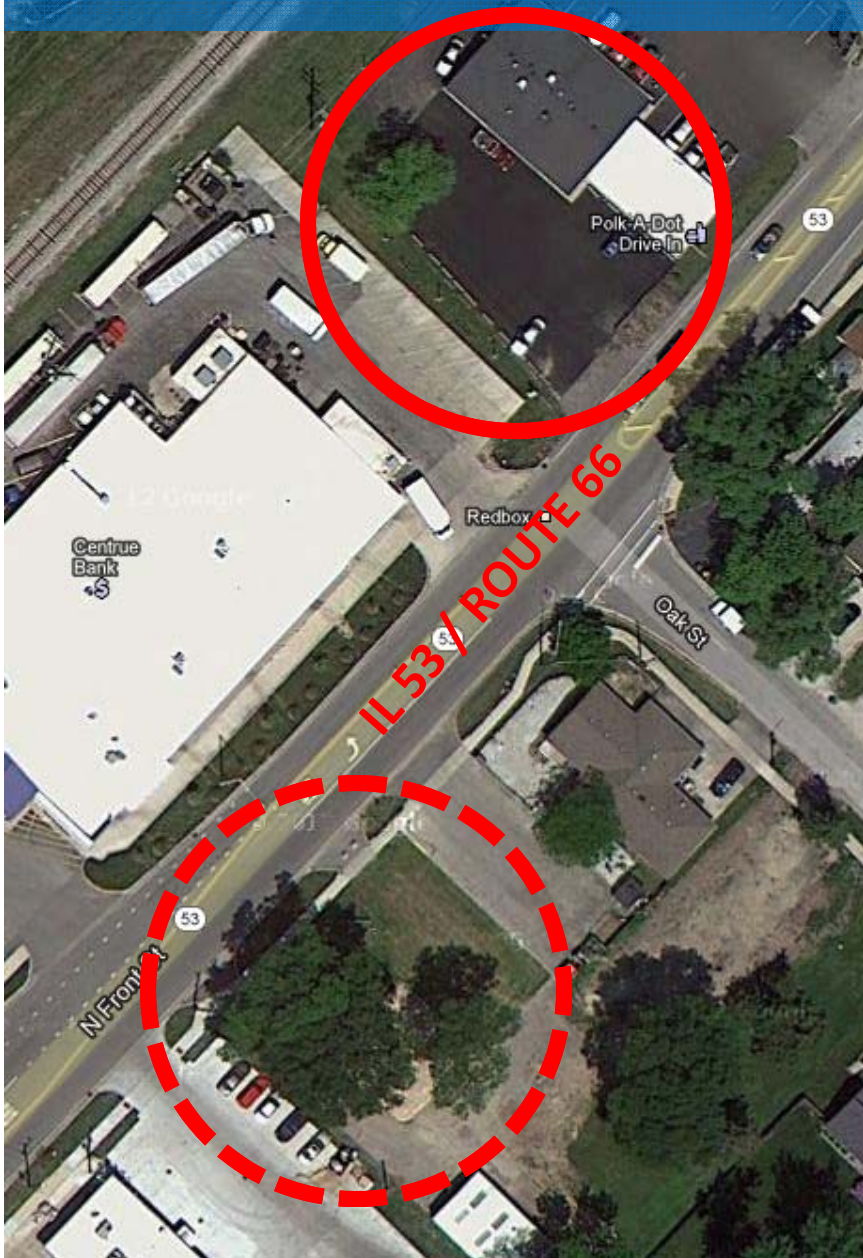
1. BRAIDWOOD MAIN STREET
2. BRAIDWOOD LAKE
3. MAZONIA PRESERVE
4. EXELON PLANT
5. FARM LAND

6. SAND RIDGE PRESERVE
7. BRAIDWOOD DUNES
8. WAUPONSEE TRAIL END AT RIVER

BRAIDWOOD



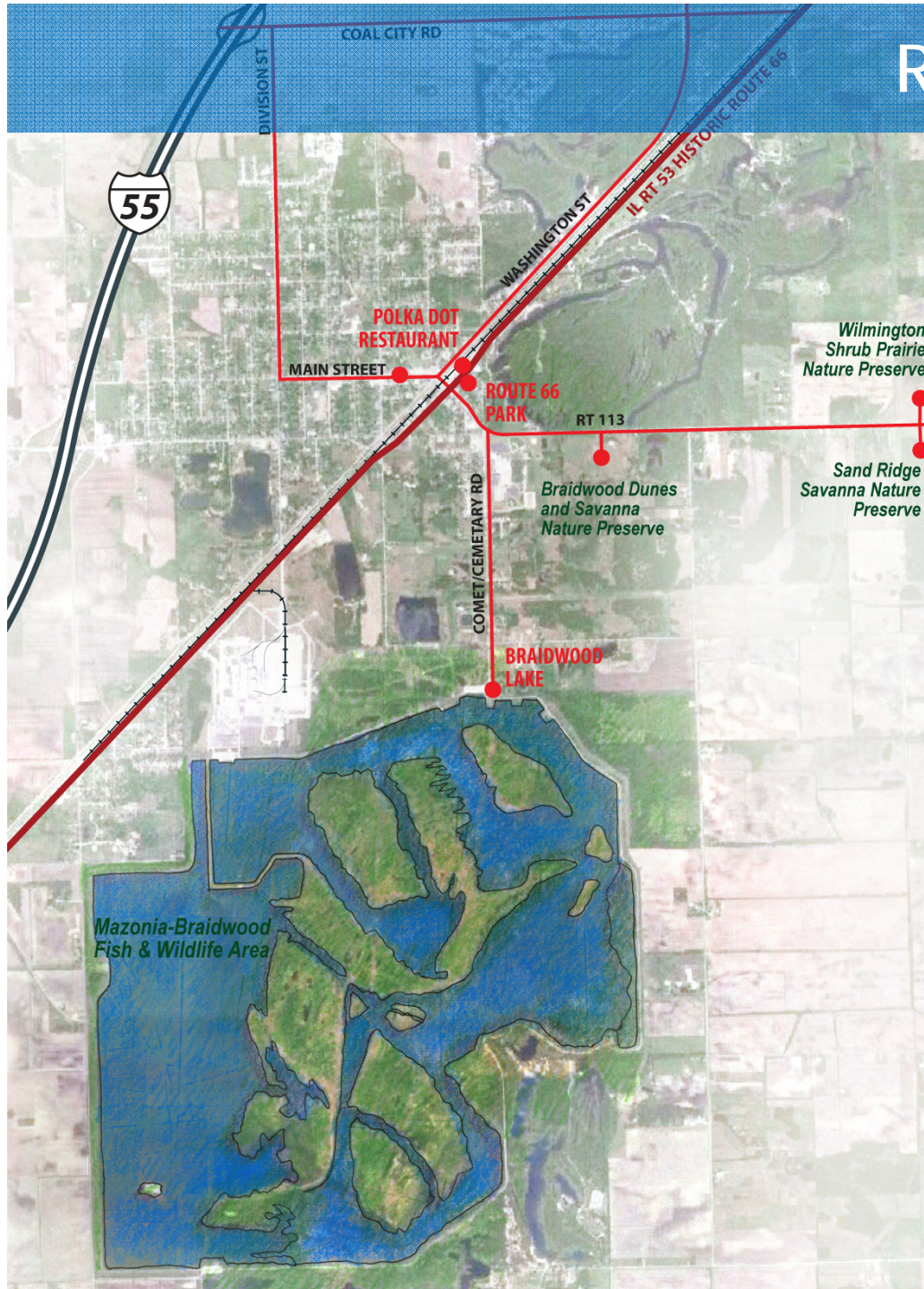
ROUTE 66 BRAIDWOOD STOP
PRESERVE THE POLKA DOT AND CREATE THE NEW GATEWAY PARK



ROUTE 66 BRAIDWOOD STOP
NEW BRAIDWOOD PARK AND PETTING ZOO SCULPTURE



ROUTE 66 BRAIDWOOD STOP



MAJOR ELEMENTS

1. POLKA DOT RESTAURANT
2. NEW BRAIDWOOD PARK
3. BRAIDWOOD LAKE
4. MAZONIA

SUPPORT FACILITIES & SERVICES

- PARKING AT BRAIDWOOD PARK
- PEDESTRIAN CROSSING AND ROUTE 66 ENHANCEMENTS
- BIKE SHARE STATION
- ZIP CAR STATION
- GEOCHACING STOP
- SIGNAGE, WAYFINDING, APPS

TRAILS

- ROUTE 66 TRAIL WITHIN IL 53 ROW
- CONNECTION BETWEEN WAUPONSEE AND I&M TRAILS



Signage and Wayfinding Framework Plan



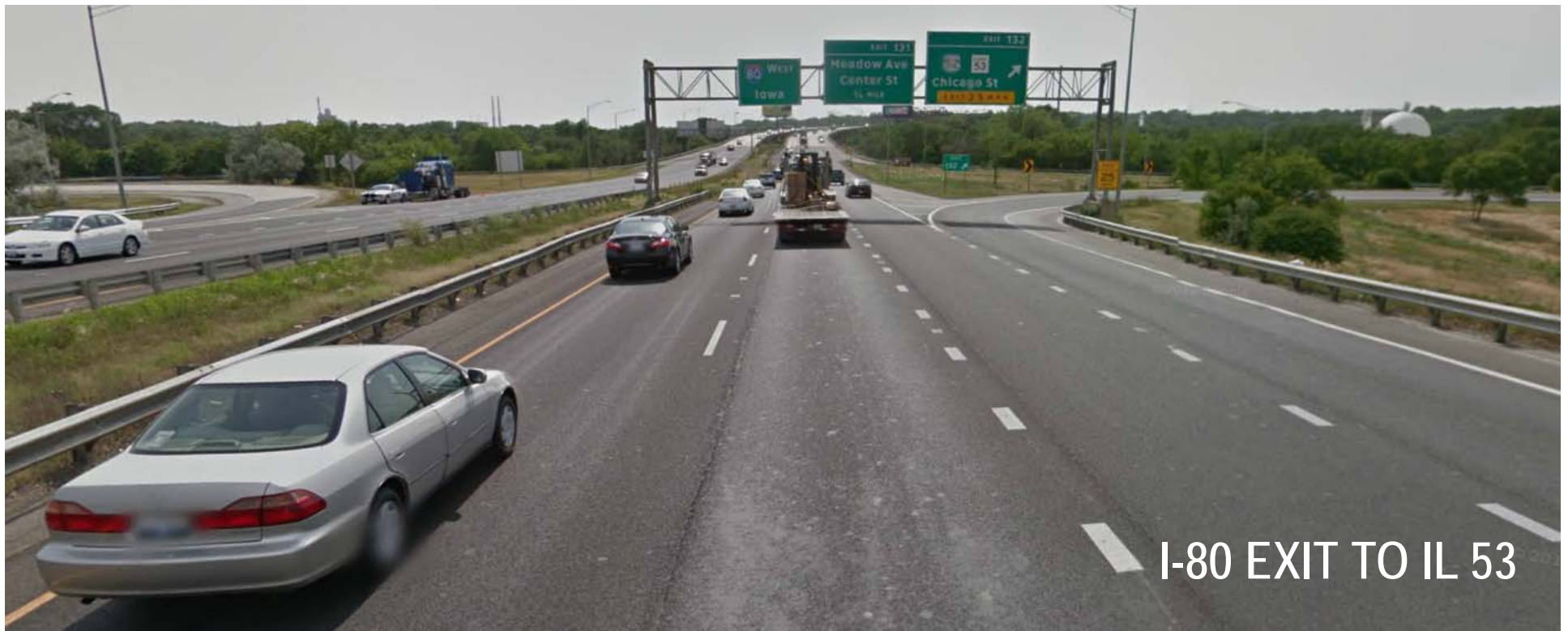
Imagine the Possibilities.

The NEED for highway and access signs for **Route 66**

Route 66 Tourism has the potential to be a major economic engine for the region. However, lack of signage and wayfinding are major obstacles to realizing this economic potential.

Major Signage Issues include:

1. DUE TO THE LACK OF SIGNAGE AT THE HIGHWAYS, TRAVELLERS ARE NOT AWARE THAT THEY ARE SO CLOSE TO HISTORIC ROUTE 66.
2. THERE IS NO SIGNAGE ALONG THE HIGHWAY TO INDICATE THAT IL 53 IS "ROUTE 66".
3. THERE IS NO ROUTE 66 DIRECTIONAL SIGNAGE AT THE RAMPS ONCE YOU TAKE AN EXIT.



The NEED for Roadway and Directional signs for **Route 66**

Major Signage Issues include (contd.)

4. ONCE YOU ARE ON IL 53, THERE IS MINIMAL ROUTE 66 ROADWAY SIGNAGE TO LET YOU KNOW YOU IF YOU ARE STILL ON THE MOTHER ROAD.
5. THERE IS NO DIRECTIONAL SIGNAGE TO THE MANY LOCAL ATTRACTIONS ON AND NEAR ROUTE 66.



The Route 66 Family of SIGNS

ROUTE 66 ROADWAY SIGN ON POLE



HIGHWAY ACCESS SIGN

Conceptual Historic Route 66 Access Sign that would be installed at Interstate exits and major highway intersections that connect to the byway.



DIRECTIONAL SIGN



Standardized directional signs to primary attractions. The design replicates the colors and Route 66 shield of the IDOT highway signs, which travelers are used to watching for.

PAVEMENT SIGN



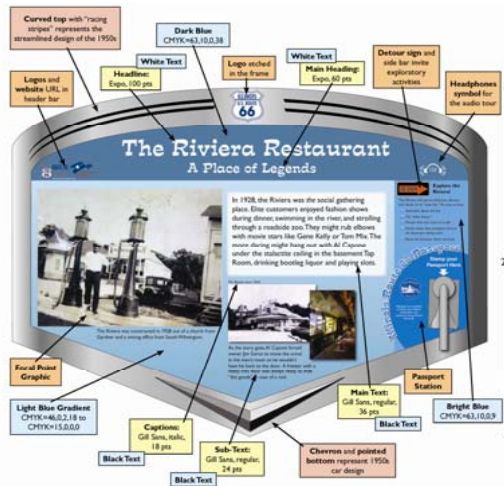
A Route 66 shield painted on the street marks an alignment through Chenoa.

The Route 66 Family of SIGNS

WAYSIDE EXHIBITS



Conceptual sketch of an Illinois Route 66 wayside exhibit. Interpretive panels are on duty 24 hours a day and directly interpret tangible resources that can be seen or experienced.



The frame and supports of Route 66 wayside exhibits reflect the popular era of the Mother Road and assist in telling the stories.

EXPERIENCE HUBS



One side of each Experience Hub should display a large map of the community with significant tourist attractions along Route 66 alignments.



The other side of the Hub will feature interpretive messages about Route 66 and the community's history.


The Route 66 Family of SIGNS: Local Examples

JOLIET



WILMINGTON REGION

"The Island City"
Route 66 in Wilmington




You are standing on an island surrounded by the scenic Kankakee River, the source of Wilmington's nickname, "The Island City." People have crossed the river here for hundreds of years. It was a winter camp of the Potawatomi tribe. In 1834, Thomas Cox harnessed the water for a saw mill and soon after platted the town. Route 66 passed through here from 1926 to 1939.

Eagle Hotel
This photo of the Kankakee River at Wilmington was taken between 1900 and 1905.

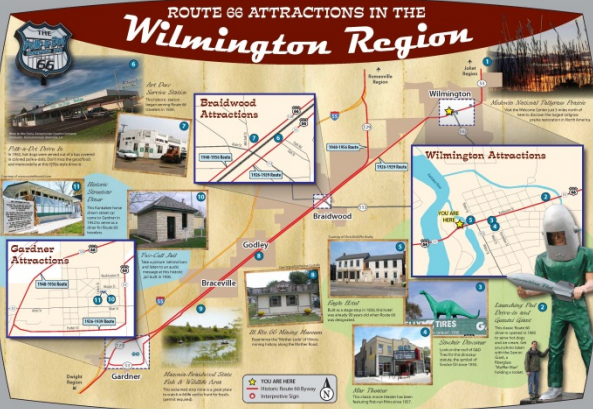
Cox's Mill drew settlers from a wide area to grind their wheat and corn into flour. The Eagle Hotel was built in 1836 to accommodate these farmers and as a stage stop between Chicago and Peoria.

The Gemini Giant
The most photographed citizen of Wilmington is not a person, it is The Gemini Giant, a 1960's "muffler man" on the Launching Pad Dinwiddie. These enormous advertising characters towered over roads across America, clutching mufflers, hot dogs, cars, and, in Wilmington, a rocket ship.





ROUTE 66 ATTRACTIONS IN THE Wilmington Region




Braidwood Attractions

- 1. **Art Deco Service Station**
- 2. **Wilmington**
- 3. **Wilmington Attractions**
- 4. **Wilmington**
- 5. **Wilmington**
- 6. **Wilmington**
- 7. **Wilmington**
- 8. **Wilmington**
- 9. **Wilmington**
- 10. **Wilmington**
- 11. **Wilmington**
- 12. **Wilmington**
- 13. **Wilmington**
- 14. **Wilmington**
- 15. **Wilmington**
- 16. **Wilmington**
- 17. **Wilmington**
- 18. **Wilmington**
- 19. **Wilmington**
- 20. **Wilmington**


Wilmington Attractions

- 1. **Wilmington**
- 2. **Wilmington**
- 3. **Wilmington**
- 4. **Wilmington**
- 5. **Wilmington**
- 6. **Wilmington**
- 7. **Wilmington**
- 8. **Wilmington**
- 9. **Wilmington**
- 10. **Wilmington**
- 11. **Wilmington**
- 12. **Wilmington**
- 13. **Wilmington**
- 14. **Wilmington**
- 15. **Wilmington**
- 16. **Wilmington**
- 17. **Wilmington**
- 18. **Wilmington**
- 19. **Wilmington**
- 20. **Wilmington**



WELCOME TO Route 66 ILLINOIS

Route 66, the Mother Road, is an American icon that symbolizes romance and freedom of the open road. Born in 1926, Route 66 was one of the first numbered U.S. highways, journeying 2,500 miles from Chicago to Los Angeles. Today, you can still "get your kicks on Route 66" by exploring the Illinois Historic Route 66 National Scenic Byway.



The Beginning
Historic Route 66 starts in downtown Chicago, the business and cultural capital of the Midwest. It travels through bustling Chicago suburbs before reaching the rural countryside.

The Mother Road
Route 66 was the road of flight for people escaping the Dust Bowl in the 1930s. It was the route of adventure for families seeking the wonders of the Southwest and California in the 1950s and '60s.

Main Street of America
Crown elevators and fields great modern travelers, much as they did in earlier eras. Journey through prairie farmland and friendly Midwestern towns.

Roadside Oddities
Quality attractions lined travelers off the road with the promise of fun and adventure. Explore giants, museums, and other attractions that still exist today.

Fill 'er Up!
Service stations along Route 66 did more than just pump gas. Friendly attendants assisted travelers with a smile. Today, you can rediscover several historic service stations.

On to Missouri!
The Old Chain of Rocks Bridge is the scenic endpoint of Route 66 in Illinois. It opened as a crossing over the Mississippi River for traffic from 1936 to 1955. It is now open for walking and biking.

Route 66 Lives On
Unable to compete with fast-moving freeways, U.S. Route 66 was decommissioned in 1985. Nostalgia for hometowns and America's landscape, fueled by movies, TV shows, and music, keeps the Mother Road alive. Press to hear the popular "Get Your Kicks on Route 66" song!

ILLINOIS MILE AFTER MAGNIFICENT MILE.

illinoisroute66.org

DRAFT SIGNAGE PLAN: ROUTE 66 BRAIDWOOD STOP



★ ACCESS AND DIRECTIONAL SIGN



★ LOCAL INFORMATIONAL SIGNS AT 66 STOP



IDOT SIGNAGE REQUIREMENTS

Signing to Traffic Generators and Motorist Services

May 1984



EXAMPLE: RECENTLY INSTALLED DESTINATION SIGNAGE ON 294

TABLE C. FREEWAY: TRAFFIC GENERATOR CRITERIA

CLASSIFICATION	CRITERIA	Population of Metropolitan Area			EXAMPLES	SIGN COLOR
		Over 1,000,000	100,000-1,000,000	Less than 100,000		
Airports	Annual number of passengers on regularly scheduled commercial flights	100,000	50,000	10,000		White on Green
	Maximum distance from interchange	2 miles	3 miles	5 miles		
Educational Institutions	Number of full-time equivalent students at a post-high-school institution	500	500	500	College 4-year Junior Community University Seminary	White on Green
	Maximum distance from interchange	2 miles	3 miles	5 miles		
Military Facilities	Employees or assigned personnel	5,000	5,000	5,000	Ammunition Plant Military Base	White on Green
	Maximum distance from interchange	2 miles	3 miles	5 miles		
Government Facilities	Permanent Employees	2,000	2,000	2,000	Atomic Energy Commission State or Federal Research Facility	White on Green
	Maximum distance from interchange	2 miles	3 miles	5 miles		
Historical, Recreational, and Cultural Facilities	Annual Attendance	200,000 plus 20,000 per mile of distance from the freeway up to 5 miles plus 30,000 per mile for each additional mile over 5, with the maximum allowable distance of 10 miles from the interchange			Amusement Park Arena Auditorium Convention Center Fairground Museum Nature Preserve Race Track Stadium State Park	White on Brown

TABLE A. CONVENTIONAL HIGHWAY: TRAFFIC GENERATOR CRITERIA
(Must be within 5 miles in rural area or 1 mile in urban area)

CLASSIFICATION	CRITERIA	EXAMPLES	SIGN COLOR	
Transportation Facilities	Airport: Commercial airport with scheduled service and identified on the official State map Railroad Station: Providing railroad passenger service, i.e., AMTRAK Bus Terminal: Handling 50 or more buses per week Ferry: Operated by either private or public organizations		White on Green	
Educational Institutions	Post-high-school institution having a minimum of 500 full-time equivalent students. <i>CHECK W/ IL. BOARD OF HIGHER EDUCATION - MUST BE REGISTERED</i>	College University 4-Year Seminary Junior Trade School Community	White on Green	
	State school for special education	School for the Handicapped		
Correctional Institutions	Federal or State operated	Correctional Center Youth Camp	White on Green	
Health Care Facilities	Mental health residential care facility licensed by the State or veterans hospital listed on the official State map.	Mental Health Zone Center Veterans Hospital	White on Green	
Recreational and Cultural Facilities	The facility must be open to the general public and have a minimum annual attendance of: Population of Metropolitan Area Over 1,000,000 100,000-1,000,000 Less than 100,000 200,000 annual attendance 100,000 annual attendance 50,000 annual attendance	Amusement Park Aquarium Arboretum Archeological Site Auditorium Ball Park Convention Hall Fairground	Forest Preserve Lake/Beach Museum Nature Preserve Park Planetarium Race Track Stadium Zoo	White on Brown
		Outdoor recreational facility provided by youth organization and open year-round with a minimum annual attendance of 5,000.	Boy/Girl Scout Camp Church Camp 4-H Camp YMCA/YMCA Camp	
Historical Facilities	Special local historical attraction open year-round with no charge to the public, or any State historical site listed on the official State map.	Historical Home/Building Indian Site Monument Covered Bridge National Cemetery	White on Brown	
Government Facilities	Any building complex with 500 employees that is utilized by a local, State, or Federal governmental agency.	Ammunition Plant Atomic Energy Commission Installation Military Base State or Federal Research Facility	White on Green	
	Any building utilized by the Illinois Air or Army National Guard for a unit armory.	National Guard Armory		
Business Districts	The marked route must pass within the municipal limits and not closer than 1/2 mile to the central business district of a community with less than 10,000 population.		White on Green	
Driver's License Stations	All centers operated by the Secretary of State.		White on Green	
LIBRARIES	BASED ON POPULATION SERVED (SEE → HOURS/WEEK OPENED		WHITE ON GREEN	



Trail Framework Plan



Imagine the Possibilities.

66 TRAILS IL 53 CORRIDOR PLAN

DRAFT 5-21-13

1 IMPROVE THE I & M TRAIL HEAD AT BRANDON STREET

Upgrade the I & M Brandon Street trail head with additional amenities for riders, better signage and information about the rest of the area's attractions

2 A NEW BIKE TRAIL IN THE ROUTE 53 R.O.V.

A Bike Path can run along both sides of IL 53. One path for recreational riders the other a bike highway for travel and sport cyclists

3 CONNECTING TO THE I & M TRAIL

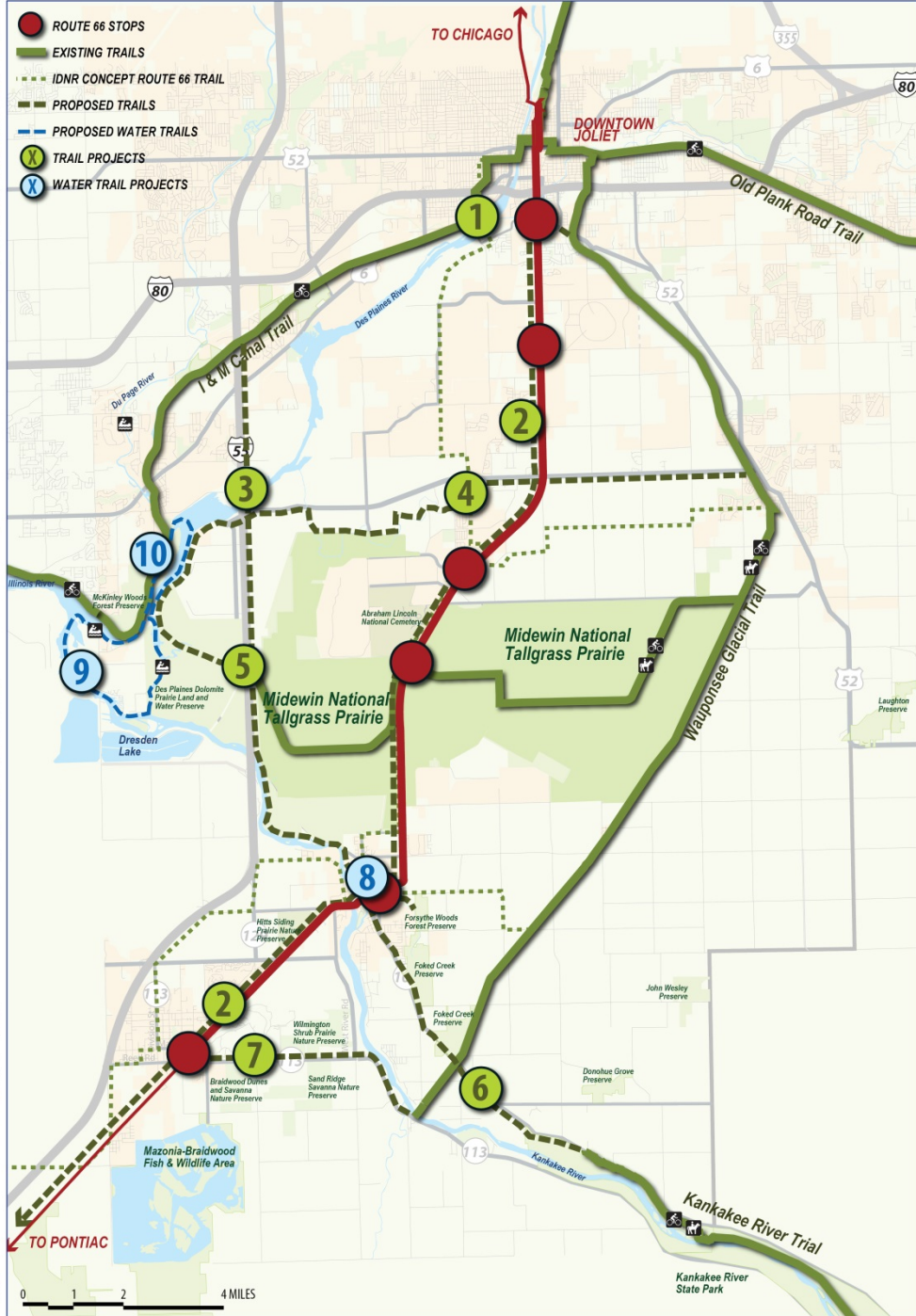
A potential Bike Path connection linking the Midwin, Will County FPD's Wauponsee trails and other trails south of the Des Plaines river with the I&M Trail is at the I-55 bridge. As the existing bridge is either replaced or reconstructed, perhaps in the next ten years, a trail component can be included as part of the bridge structure.

4 A NEW EAST - WEST BIKE TRAIL CONNECTION

An East West Trail Connection along Manhattan / Arsenal Rd would stretch from the Wauponsee Trail to the Des Plaines river

5 A RIVER EDGE BIKE TRAIL AND CONNECTION TO THE MIDWIN TRAIL

The East West Trail Connection along Manhattan / Arsenal Rd would continue along the riverfront travel through the Des Plaines Preserve and connect to the future Midwin Trail



6 A NEW BIKE TRAIL ALONG IL ROUTE 102

A Bike Trail to connect the Kankakee River Trail to the Wauponsee along IL 102

This trail can also continue north through Wilmington and connect to the Midwin Trail

7 A NEW BIKE TRAIL TO CONNECT THE WAUPONSEE TO ROUTE 53

A new Bike Trail to Connect the Wauponsee to IL 53 and Braidwood could run along IL 113

8 A NEW KAYAK COURSE AT THE WILMINGTON MILL RACE

9 A 8.5 MILE WATER TRAIL LOOP CANOE AND KAYAK

"Loop" water routes are very rare in the Midwest. The closest true 1 day loop routes are outside the state of Illinois.

Two loops are possible at the confluence of the Des Plaines, Kankakee and Illinois Rivers

The shorter 8.5 mile loop would be the right length for a day trip with enough time to explore.

Needed would be portage improvement, interpretive maps and an IDNR formal recognition of the Routes

10 A 15 MILE WATER TRAIL LOOP CANOE AND KAYAK

KERRY SHERIDAN GROVE

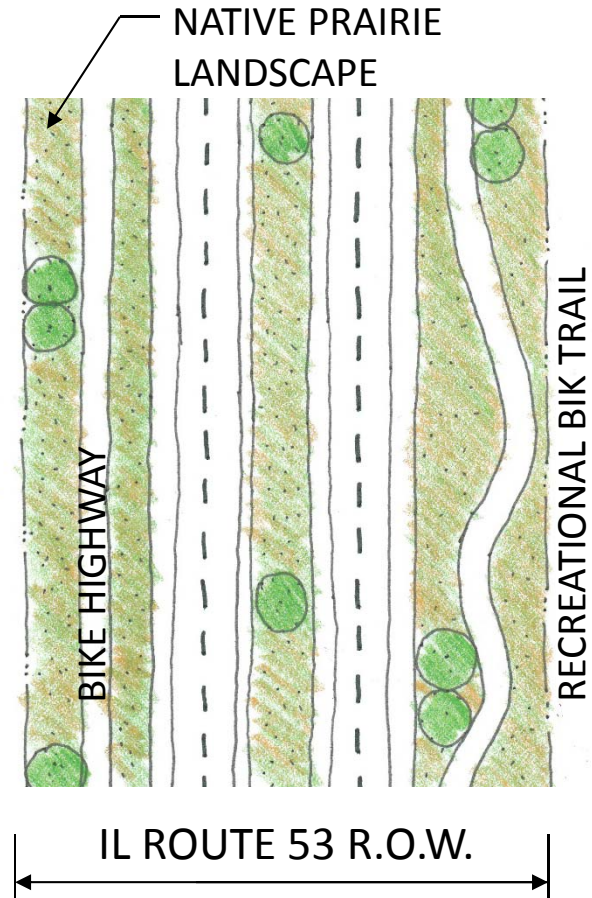
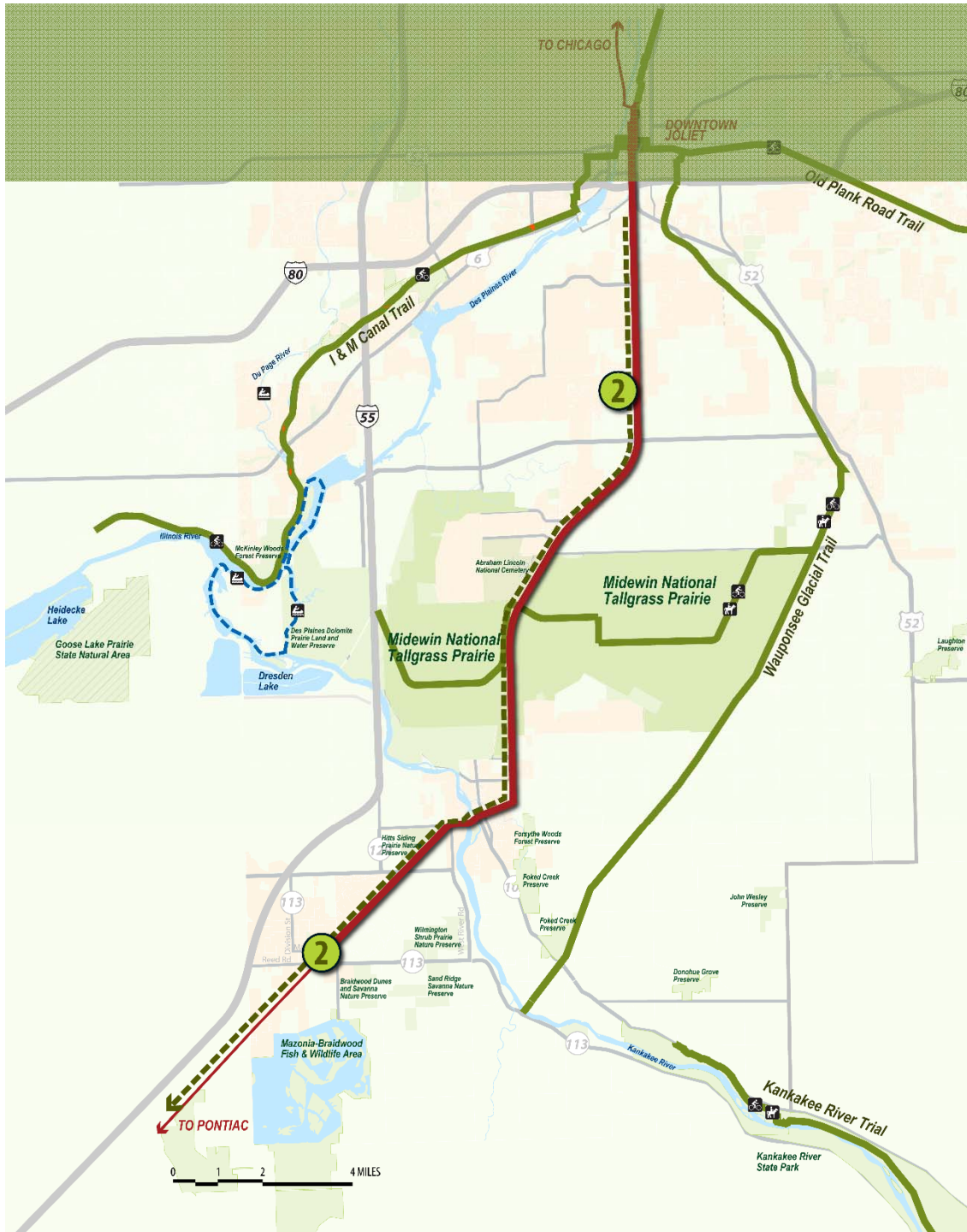
The 15 mile loop would be more challenging and intended for experienced paddlers. It could still be done in one day.

This could begin at the Kerry Sheridan Grove where the Du Page meets the Plaines River follow around the island down the Des Plaines and include the first loop route.

Additional portage improvements would be needed at the Kerry Sheridan Grove

A NEW BIKE TRAIL IN THE ROUTE 53 R.O.W

A Bike Path can run along both sides of IL 53. One path for recreational riders the other a bike highway for travel and sport cyclists



AN 8 MILE OR A 15 MILE WATER TRAIL LOOP



The 15 mile loop would be more challenging and intended for experienced paddlers. It could still be done in one day.

This could begin at the Kerry Sheridan Grove where the Du Page meets the Planes River follow around the island down the Des Planes and include the first loop route.

Additional portage improvements would be needed at the Kerry Sheridan Grove





Roadway Framework Plan



Imagine the Possibilities.

66 ROADWAYS IL 53 CORRIDOR PLAN

DRAFT 3-20-13

1 IMPROVE THE 180 - IL 53 INTERCHANGE

NEAR TERM:
 Add native prairie landscaping
 Add wayfinding signage

LONG TERM:
 Upgrade the interchange
 Reconstruct Rail Road Bridges, widen road R.O.W and provide wider travel lanes and proper sidewalks

2 AN ADDITIONAL ROUTE FOR TRUCKS

Strengthen the Laraway Road/Centerpoint Way access as an additional route for truck traffic

3 RECONFIGURE THE ENTRANCE TO THE UNION PACIFIC INTERMODAL FACILITY

Reconfigure the Center Point Road entrance to the Union Pacific Intermodal to allow left turns into the facility from the north. This will eliminate the need for trucks to travel down to Walter Strawn and back north to the facility.

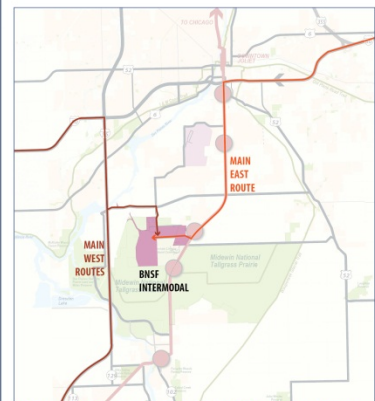
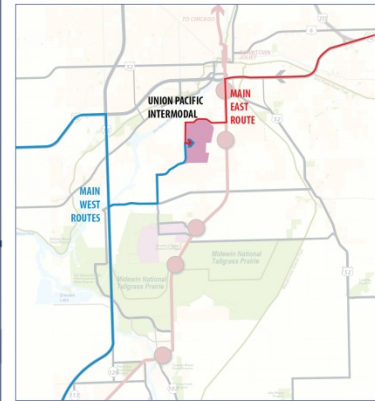
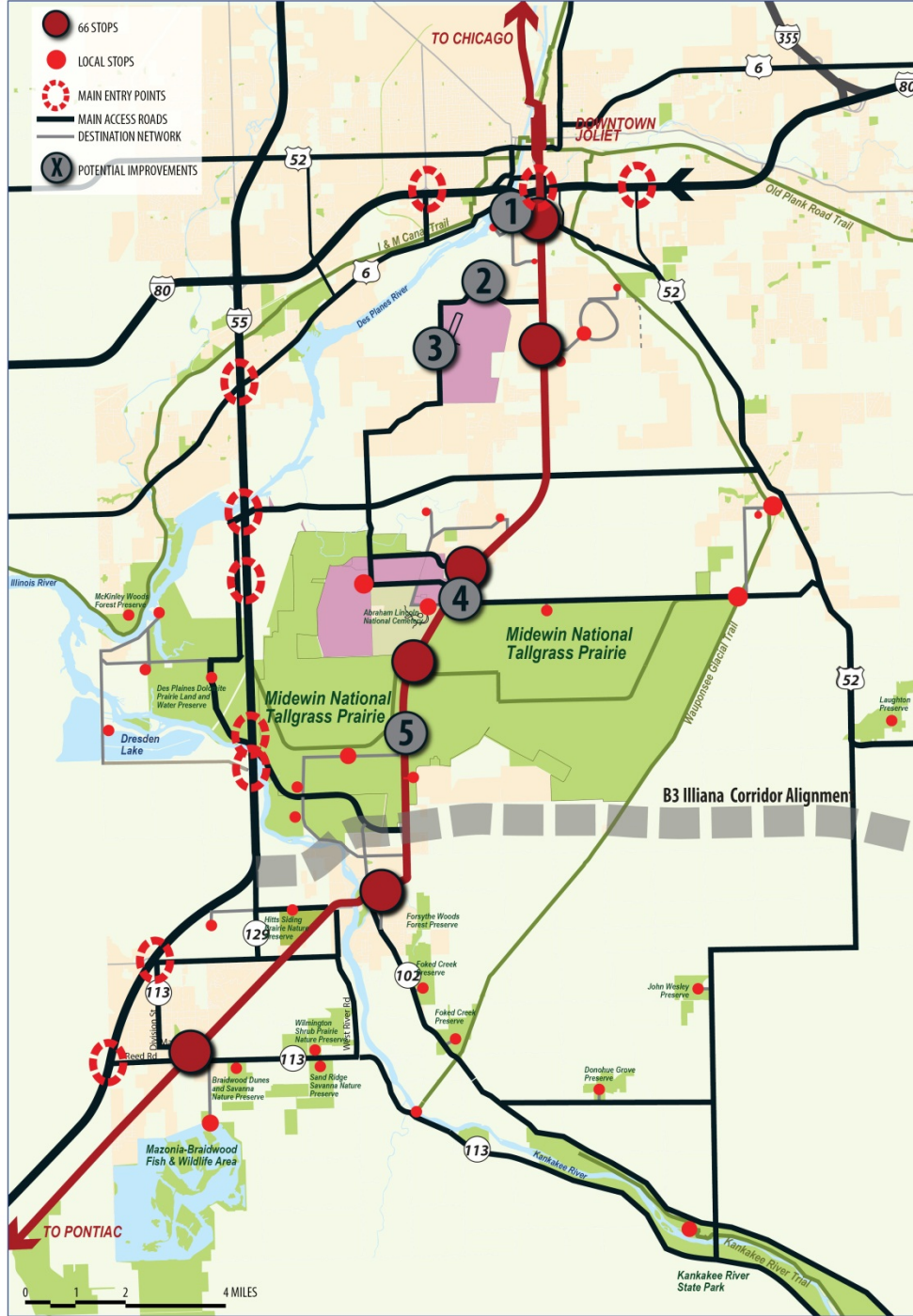
4 INCREASE CAPACITY OF TURN LANES at IL 53 and WALTER STRAWN

Add a double left turn lane from northbound IL 53 to westbound Walter Strawn

Increase storage length for left and right turn lanes to westbound Walter Strawn

5 A UNIQUE LANDSCAPE DESIGN FOR IL 53

Create a unique landscape design for the corridor that reflects the prairie and rural Illinois



IL 53 CORRIDOR

A SINGLE IDENTITY

UNIFYING A
COLLECTION OF

UNIQUE

DESTINATIONS

