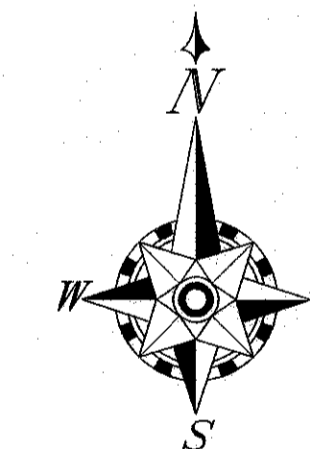
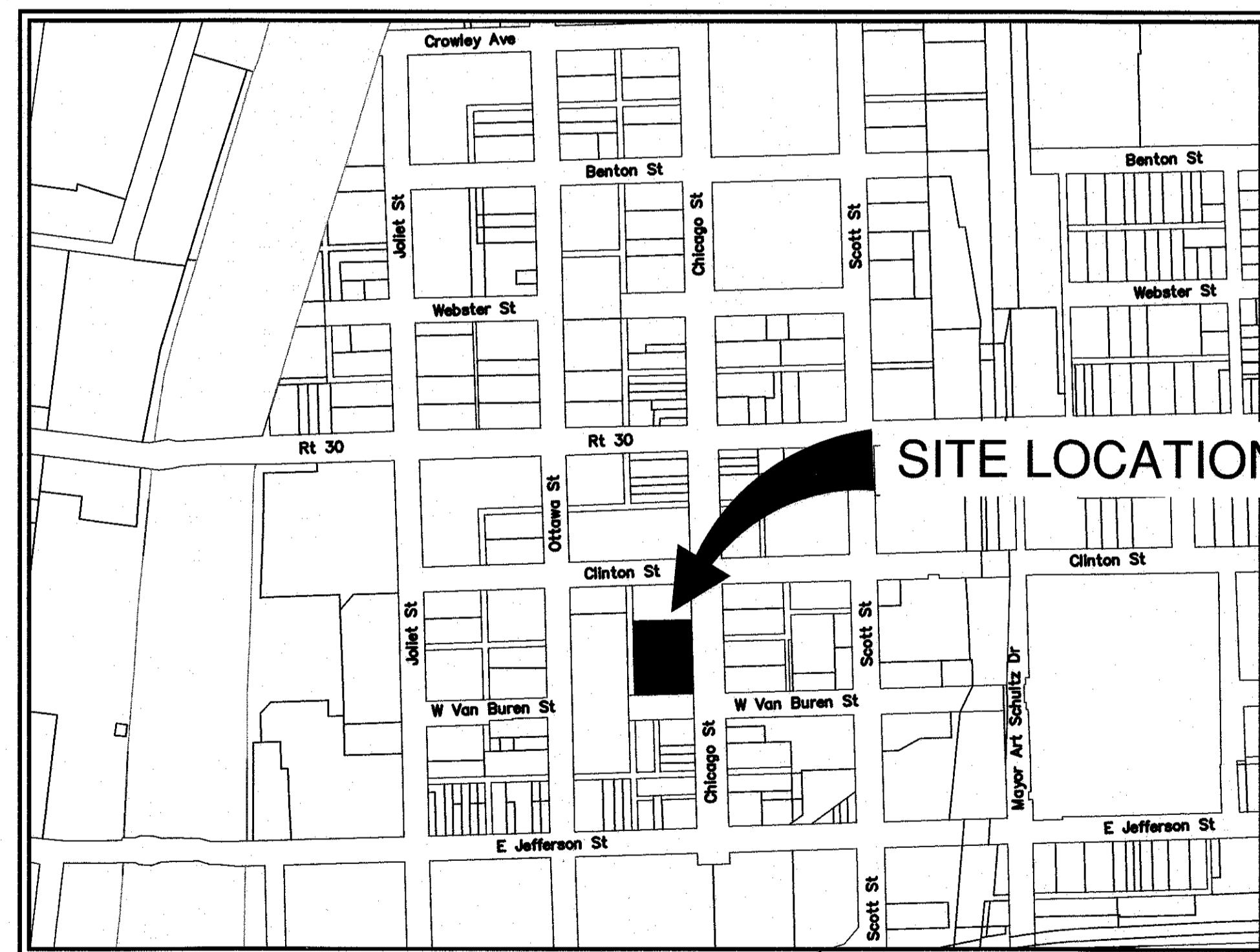


CITY OF JOLIET WILL COUNTY, ILLINOIS 2019 TEMPORARY CHICAGO STREET PARKING LOT IMPROVEMENTS PROJECT

INDEX OF SHEETS

1. COVER SHEET
2. QUANTITIES / DETAILS / GENERAL NOTES
3. SITE PLAN / GRADING PLAN



JOLIET TOWNSHIP, E 1/2, SE 1/4, SECTION 9

BENCHMARKS:
 DISC AT THE INTERSECTION OF CHICAGO STREET AND VAN BUREN STREET. DISC SET VERTICALLY IN WALL OF THE NORTH FACE OF BMO HARRIS BANK. ±4ft ABOVE GROUND. ELEVATION 543.90

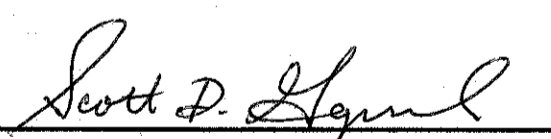
CONTROL POINT 1:
 PK NAIL AT SOUTHEAST CORNER OF LOT. ELEVATION 541.75

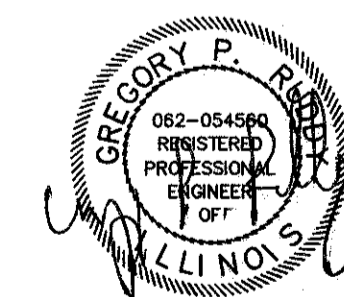
CONTROL POINT 2:
 CUT CROSS, SOUTHWEST CORNER OF CHICAGO STREET & CLINTON STREET. ELEVATION 542.06


CONTROL POINT 3:
 PK NAIL ALONG PARKING DECK WALL NEAR STORM MH 1. ELEVATION 540.93



WARNING !!!
 CALL BEFORE YOU DIG
 CITY OF JOLIET
 UTILITY INFORMATION
 724-4220

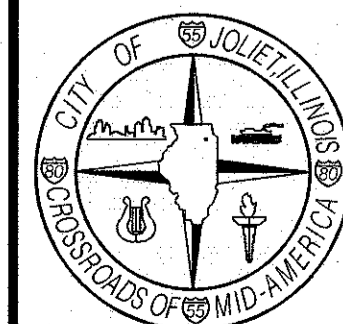
DESIGNED & PREPARED BY:
 Scott Gapsevich

 ENGINEERING SUPERVISOR



APPROVED BY:
 CITY OF JOLIET
 DEPARTMENT OF PUBLIC WORKS
 GREGORY P. RUDDY, P.E.

 PUBLIC WORKS ADMINISTRATOR

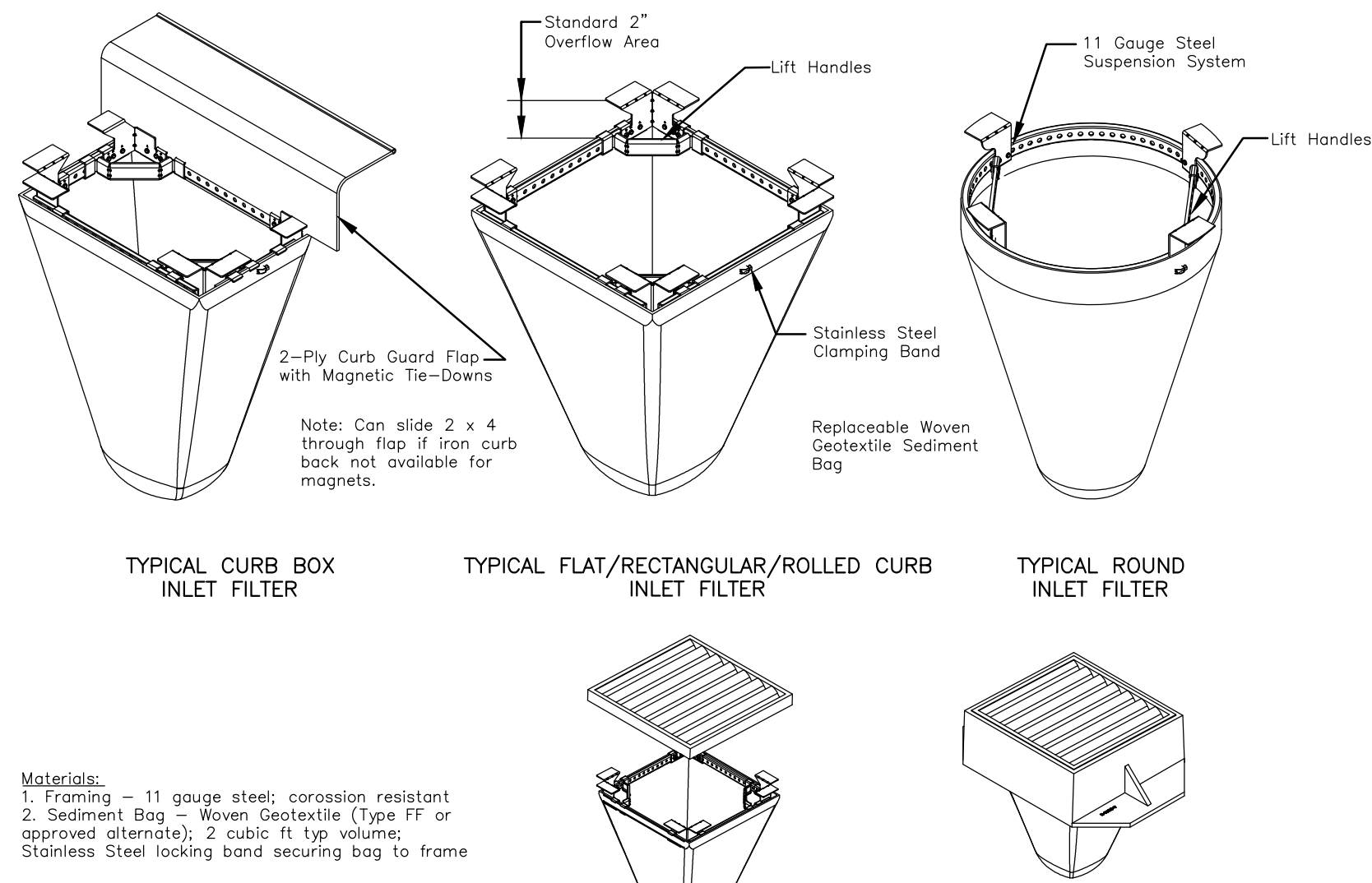
Date Sealed 04/11/19
 Date Expired 11/30/19

DATE: MARCH 2019



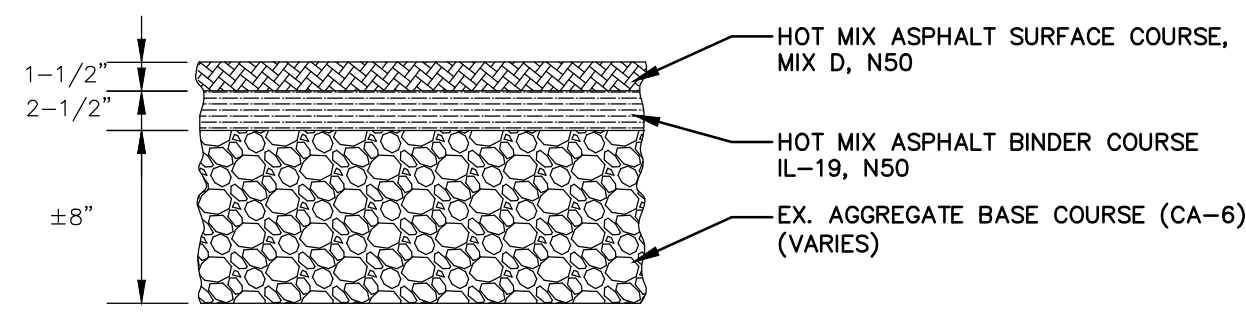
CITY OF JOLIET
 DEPARTMENT OF PUBLIC WORKS
 150 W. JEFFERSON STREET
 JOLIET, ILLINOIS 60431
 (815)-724-4200

ITEM NO.	ITEM DESCRIPTION	TOTALS	UNITS
1	PARKING LOT EXCAVATION	286	CU YD
2	SAWCUT ASPHALT SURFACE	250	LIN FT
3	HOT MIX ASPHALT SURFACE COURSE, MIX 'D', N50, 1-1/2"	113	TON
4	HOT MIX ASPHALT BINDER COURSE, IL-19, N50, 2-1/2"	200	TON
5	THERMOPLASTIC PAVEMENT MARKING LINE - 4"	1300	LIN FT
6	THERMOPLASTIC PAVEMENT MARKING - LETTERS AND SYMBOLS	137	SQ FT
7	BARRIER CURB, TYPE B	150	LIN FT
8	BITUMINOUS MATERIALS (PRIME COAT)	625	GAL
9	EROSION CONTROL	1	L SUM
10	FURNISHING AND PLACING TOPSOIL, 3"	143	SQ YD
11	HARDWOOD MULCH	143	SQ YD
12	TRAFFIC CONTROL & PROTECTION	1	LP SUM

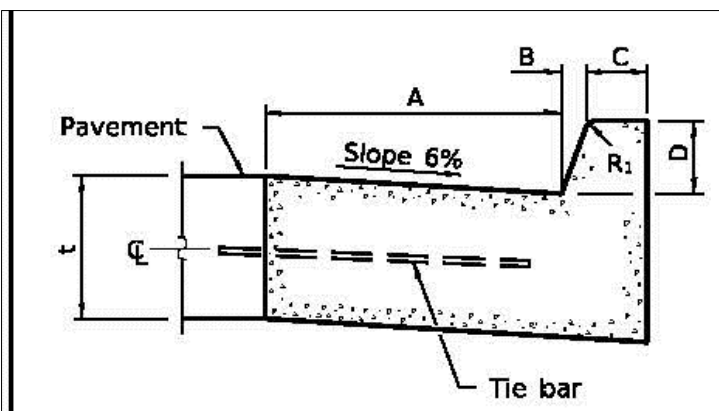


Materials:
 1. Framing - 11 gauge steel; corrosion resistant
 2. Sediment Bag - Woven Geotextile (Type FF or approved alternate); 2 cubic ft. tip volume; Stainless Steel locking band securing bag to frame
Installation:
 1. Remove grate
 2. Drop inlet filter onto load bearing lip of casting or concrete structure
 3. Replace grate

STORM DRAIN INLET PROTECTION



PARKING LOT PAVEMENT SECTION

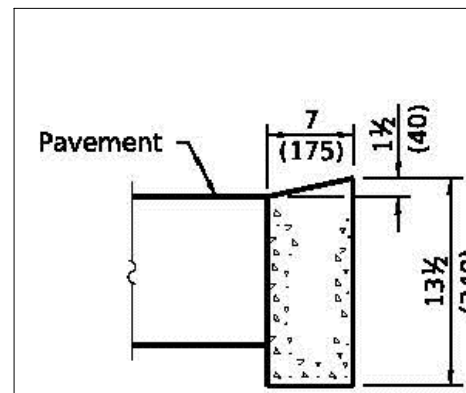


BARRIER CURB

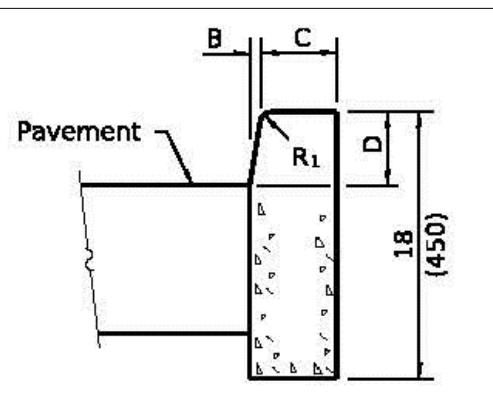
TYPE	A	B	C	D	R1
B-6.06	6	1	6	6	1
(B-15.15)	(150)	(25)	(150)	(150)	(25)
B-6.12	12	1	6	6	1
(B-15.13)	(300)	(25)	(150)	(150)	(25)
B-6.18	18	1	6	6	1
(B-15.45)	(450)	(25)	(150)	(150)	(25)
B-6.24	24	1	6	6	1
(B-15.60)	(600)	(25)	(150)	(150)	(25)
B-9.12	12	2	5	9	1
(B-22.30)	(300)	(50)	(125)	(225)	(25)
B-9.18	18	2	5	9	1
(B-22.45)	(450)	(50)	(125)	(225)	(25)
B-9.24	24	2	5	9	1
(B-22.60)	(600)	(50)	(125)	(225)	(25)

For corner islands only.

Illinois Department of Transportation
 PASSED: January 1, 2018
 ENGINEER OF LOCAL ROADS AND STREETS
 APPROVED: January 1, 2018
 ENGINEER OF DESIGN AND ENVIRONMENT



DEPRESSED CURB



BARRIER CURB

ADJACENT TO FLEXIBLE PAVEMENT

DATE	REVISIONS
1-1-18	New standard.

CONCRETE CURB TYPE B AND COMBINATION CONCRETE CURB AND GUTTER
 (Sheet 1 of 2)
 B.L.R. 28

GENERAL NOTES

- The cost of any labor or materials necessary in connecting existing drain tiles or storm sewer to proposed drainage structures, or in connecting proposed storm sewers to existing drainage structures shall be considered incidental to the proposed drainage structures or storm sewers.
- The location of underground utilities on the plans represents the best knowledge of the City and the indicated adjustments or reconstructions are considered to be reasonably accurate. It shall be the Contractor's responsibility, as detailed in Section 107.31 of the Standard Specifications, to verify locations of underground utilities before starting construction operations. The Contractor shall indemnify the City, its Officers and employees against all claims due to damage to corporate or private property resulting from his construction operations as described in Articles 107.20 and 107.26 of the Standard Specifications. The Contractor shall make his own investigation to determine the existence, nature and location of all utility lines and appurtenances within the limits of improvements. The Contractor will be responsible for performing exploratory excavation to expose any underground utility including services with a City representative present and identifying all possible utility conflicts within the proposed public improvement prior to excavating for the roadway. The Contractor shall backfill these exploratory excavation sites with trench backfill and shall maintain the roadway until all the identified utility conflicts are resolved. The cost of the exploratory excavation for underground utilities shall be considered incidental to the contract. No other compensation shall be allowed for this work. The Contractor will be required to cooperate with all Contractors, Utility companies, and the City of Joliet, involved with the removal, temporary re-location, reconstruction, or abandonment by these agencies of any and all services or facilities owned or operated by them within the limits of the improvement. Before doing any work which will damage, disturb, or leave unsupported or unprotected any utility lines encountered, the Contractor shall notify the respective owner thereof, who will make arrangements for relocating, adjusting, or otherwise maintaining or abandoning services or lines that fall within the limits of the proposed construction without cost to the Contractor, including the removal of cables, manhole covers, and other appurtenances which the owner desires to salvage. After such arrangements have been made, the Contractor will proceed with the work as directed by the Engineer. No extra compensation will be allowed the Contractor for any expense incurred by complying with these requirements, or because of delays, inconvenience, or interruptions in his work resulting from the failure of any City or Utility Company to remove, relocate, reconstruct, or abandon their services when required by the Contractor's operations. An extension of time may be granted to the extent the Contractor's operations were affected. The Contractor shall be responsible for coordinating his work with that of these agencies as to ensure that this improvement is not delayed because of necessary changes in the existing utilities, public or private. The Contractor shall take whatever precautions which may be necessary to protect the property of various utilities which may be located underground or above ground, at or adjacent to the site of this improvement. The contractor will be required to repair or replace at his own expense, or bear the cost of having the utility repair or replace any public/private utility which has been damaged through his efforts. The procedure and specifications of repair will be in accordance with the regulations and/or policy of the utility. The Utility shall be given notice by the Contractor to locate and identify all of their installations at the site of this improvement so that this improvement is not delayed because of necessary changes in the existing utilities, public or private.
- The Contractor shall proceed with caution for any excavation and preparation of the trench so that the exact location of underground structures may be determined. Prior to proceeding with any excavation, the contractor shall contact all utility companies in the area to aid in locating their underground services. The Contractor shall contact the involved utility companies not less than 48 hours prior to beginning construction. The majority of these utilities may be contacted through J.U.L.I.E. at (800) 892-0123. In addition, the Contractor shall be responsible to contact the City of Joliet Utilities 48 hours prior to beginning the construction at (815)724-4220. It shall remain the Contractor's responsibility to contact all utilities. The Contractor shall take all reasonable precautions against damage to existing utilities. However, in the event of a break in an existing watermain, gas main, sewer, or underground cable, he shall immediately notify the responsible official of the organization operating the utility interrupted. The Contractor shall lend all possible assistance in restoring services and shall assume all cost, charges, and claims connected with the interruption and repair of such services. Privately owned utilities requiring adjustment will be adjusted by the utility company involved. No additional compensation will be allowed for any delays or inconveniences caused the Contractor due to said adjustments.
- Trench backfill must be provided under all roadway surfaces and driveways and as directed by the Engineer.
- Existing sidewalk, pavement, driveway pavement and curb and gutter damage due to the Contractor's operations shall be replaced at the expense of the Contractor.
- For all manholes, catch basins, and inlets, the distance shown on the plans is from the baseline to the center of the structure, except structures in the curb line where the distance is shown to the back of curb.
- All existing valve vaults and manholes indicated on the plans or as directed by the Engineer shall be covered with a Contractor-supplied steel plate at all times during construction. Upon preparation for binder course, the frame shall be installed to the surface elevation as shown on the plans or as directed by the Engineer and set in concrete according to the Standard Specifications.
- This project is to be built according to the City of Joliet Special Provisions and General Conditions adopted Jan 1, 2013 unless otherwise stated in the contract documents.
- Where section or sub-section monuments are encountered, the Engineer shall be notified before such monuments are removed. The Contractor shall protect and carefully preserve all property markers and monuments until the owner and an authorized surveyor or agent has witnessed or otherwise referenced their location. However, if damaged items occur, it is the responsibility of the Contractor to restore the marker per Registered Land Surveyor at his own expense.
- It shall be the responsibility of the Contractor to construct each inlet or catch basin at the proper location so that the frame or grate matches the curb line as shown in the applicable Standard.
- All proposed manholes, catch basins and inlets shall be fabricated to include no less than four (4) inches of adjusting rings to meet the required grade.
- The cost of the removal and disposal of the asphalt shall be considered incidental to roadway excavation.
- All top of curb (TOC) elevations, excluding depressed curb, are 0.1' above the listed C/L elevations unless otherwise noted.
- All structure rim elevations located in the curb line are top of curb elevations unless otherwise noted.
- All graded areas disturbed during construction operations shall be seeded or sodded in accordance with sections 642 and 644 of the Standard Specifications, as indicated in the plans.
- Quantities for adjusting sanitary sewer services and water service lines have been added to the summary of quantities and the contract to provide a unit price bid for the item, and are to be used only if field conditions require their use, as approved by Engineer.
- The Contractor shall protect existing or new utilities by methods approved by the Engineer, and he shall brace and support the utilities properly to prevent settlement, displacement, or damage to the utilities. The protection of the utilities as specified herein, will not be paid for separately, but shall be considered incidental to the contract.
- Existing street signs, markers stop signs, and all other roadway signs shall be removed and reset by the Contractor as per current MUTCD standards and as directed by the Engineer. This work will be paid for directly, but shall be considered incidental to the contract. Signs and posts damaged by the contractor shall be replaced by him at his own expense.
- Sidewalk ramps for the handicapped shall be constructed at locations where existing or proposed sidewalks at the street returns within the limits of this improvement in accordance with Highway Standard 424001-08 of the State of Illinois. This work will not be paid for separately, but shall be considered incidental to the proposed sidewalk.
- Timeliness of work: The contractor shall perform all work in a timely, orderly, and diligent manner. The Contractor shall cooperate with and conform to the request of the City to expedite particular portions of the work insofar as to complete certain phases of work in a timely manner. Work shall be completed within the timeframe as outlined in the Supplemental Special - WORKING DAYS (BDE) 80071. Contractor shall submit a PROJECT SCHEDULE showing coordination of sub-contractors and sequencing of work. Construction of the concrete curb & gutter shall begin within five (5) working days of the completion of the roadway grading and sub-base preparation. Upon completion of the concrete curb & gutter construction of the driveway opens shall begin, and remain continuous, such that driveways shall not remain inaccessible for more than 20 working days, as measured from the date of completion of roadway excavation. If the contractor cannot meet these requirements, he shall provide temporary stone access to all affected driveways. No additional compensation will be allowed for providing, placing, and removing all temporary access stone. The City reserves the right to place and remove the temporary stone and deduct the cost from the construction contract for contractors not meeting this requirement.
- Protection of property and surface structures: Trees, shrubbery fences, poles, right-of-way pins and all other property and surface structures shall be protected during construction operations unless the Engineer authorizes their removal for purposes of construction. Any fences, poles, or other manmade surface improvements, which are moved or disturbed by the Contractor shall be restored to the original conditions, after construction is completed, at the Contractor's expense. Any trees, shrubbery, or other vegetation, which are approved for removal by the Engineer in order to facilitate construction operations, shall be removed completely, including stumps and roots, by the Contractor. Responsibility for any damage or claims for damage caused by construction operations to shrubbery or other landscape improvements, which were not authorized for removal by the Engineer, shall be assumed by the Contractor.
- Work to be Done by Others: The City of Joliet Public Works and Utilities, Com-Ed, NICOR, AT&T, and others may be adjusting their facilities during construction of this section. In such event, it will be necessary for the Contractor to cooperate with the various organizations and the City while they are doing this work. All street lighting/utility poles and luminaires required to be moved shall be relocated and wired by the owner of the pole as per their franchise agreement. No compensation shall be allowed to the Contractor for street lighting/utility pole relocation work.
- In accordance with Article 105.09 of the "Standard Specifications", the Contractor shall furnish to the City of Joliet Public Works Office, 150 W. Jefferson Street, at his/her expense, construction layout stakes for the project. The material for all layout stakes and lathe shall be oak. Layout stakes (hubs) shall be 2"x2"x15". Lathe shall be four (4)" feet in length. Hubs shall be provided at a rate of one bundle per 300 linear feet of project length for curb and gutter construction and at a rate of one bundle per 600 linear feet of project length for all other construction projects. Lathe shall be provided at a rate of one bundle per 600 linear feet of project length for all construction. The cost incurred by the Contractor in complying with this requirement shall be considered incidental to the contract.

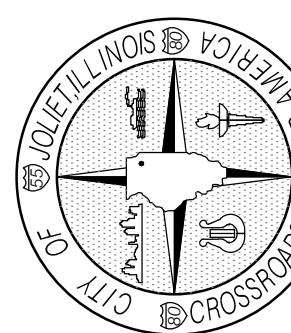
State Standards

000001-06	Symbols & Abbreviations
602001-02	Catchbasin Type A
701801-05	Sidewalk, Corner or Crosswalk Closure
B.L.R. 28	Concrete Curb Type B & Combination Concrete Curb & Gutter

2019 TEMPORARY CHICAGO STREET
 PARKING LOT IMPROVEMENTS PROJECT
 QUANTITIES / DETAILS / GENERAL NOTES

CHECKED BY: GPR	SCALE: NONE
DESIGNED BY: SDC	DATE: MARCH 2019
DRAWN BY: LWD	SHEET 2 OF 3

CITY OF JOLIET
 DEPARTMENT OF PUBLIC WORKS
 150 W. JEFFERSON STREET, JOLIET, ILLINOIS 60431
 (815)-724-4200

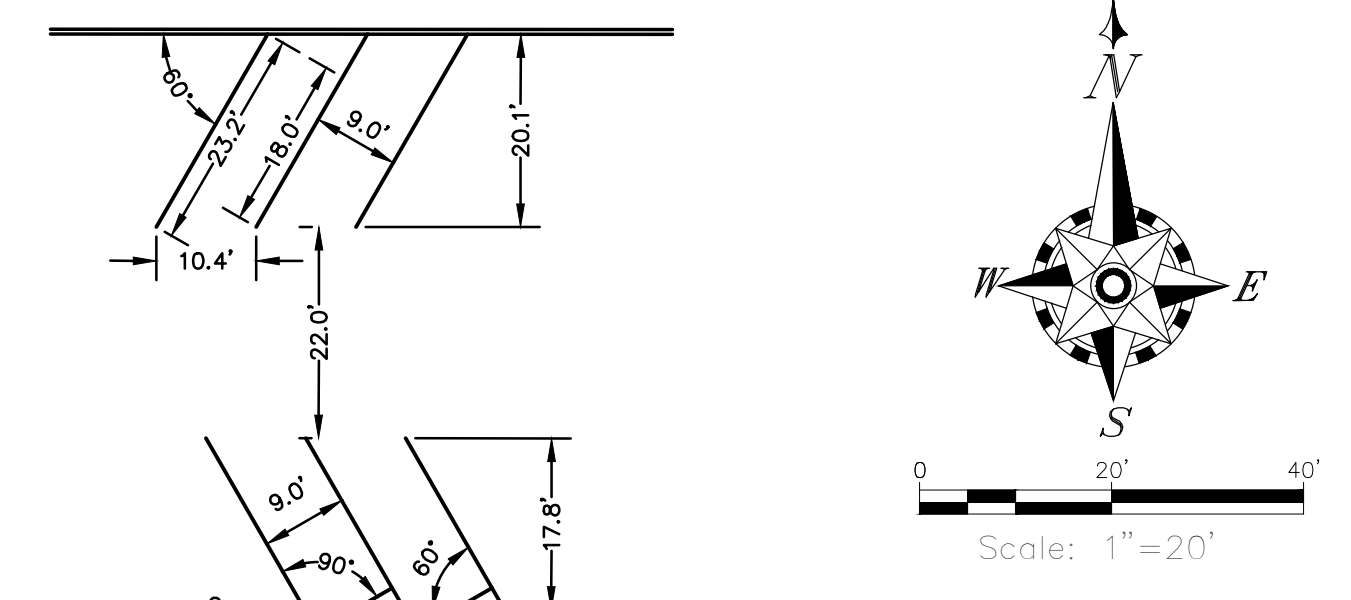


BENCHMARK:
DISC AT THE INTERSECTION OF
CHICAGO STREET AND VAN BUREN
STREET. DISC SET VERTICALLY IN
WALL OF THE NORTH FACE OF BMO
HARRIS BANK. ±4ft ABOVE GROUND.
ELEVATION 543.90

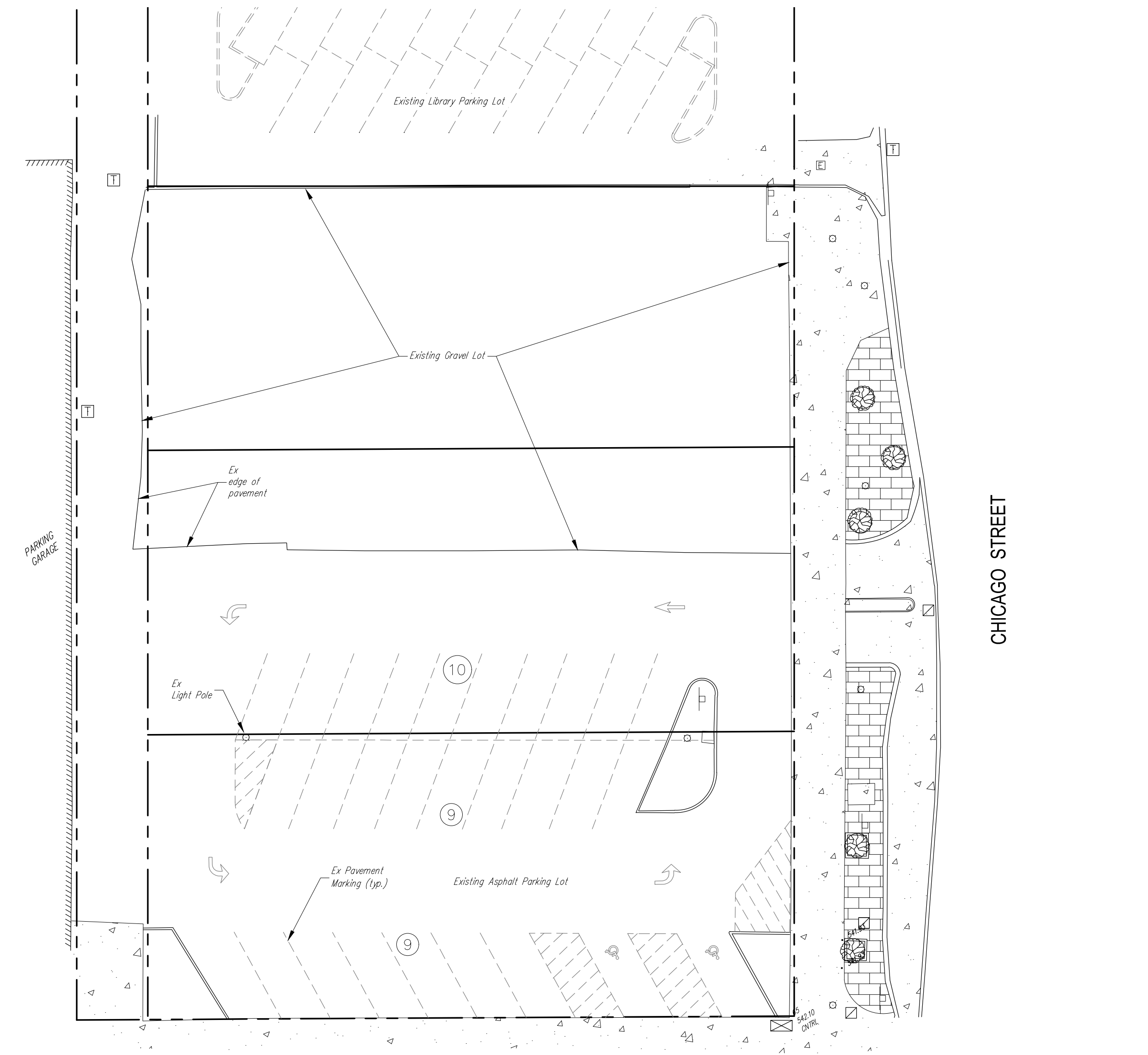
CONTROL POINT 1:
PK NAIL AT SOUTHEAST CORNER OF
LOT
ELEVATION 541.75

CONTROL POINT 2:
CUT CROSS, SOUTHWEST CORNER OF
CHICAGO STREET & CLINTON STREET
ELEVATION 542.06

CONTROL POINT 3:
PK NAIL ALONG PARKING DECK WALL
NEAR STORM MH 1
ELEVATION 540.93

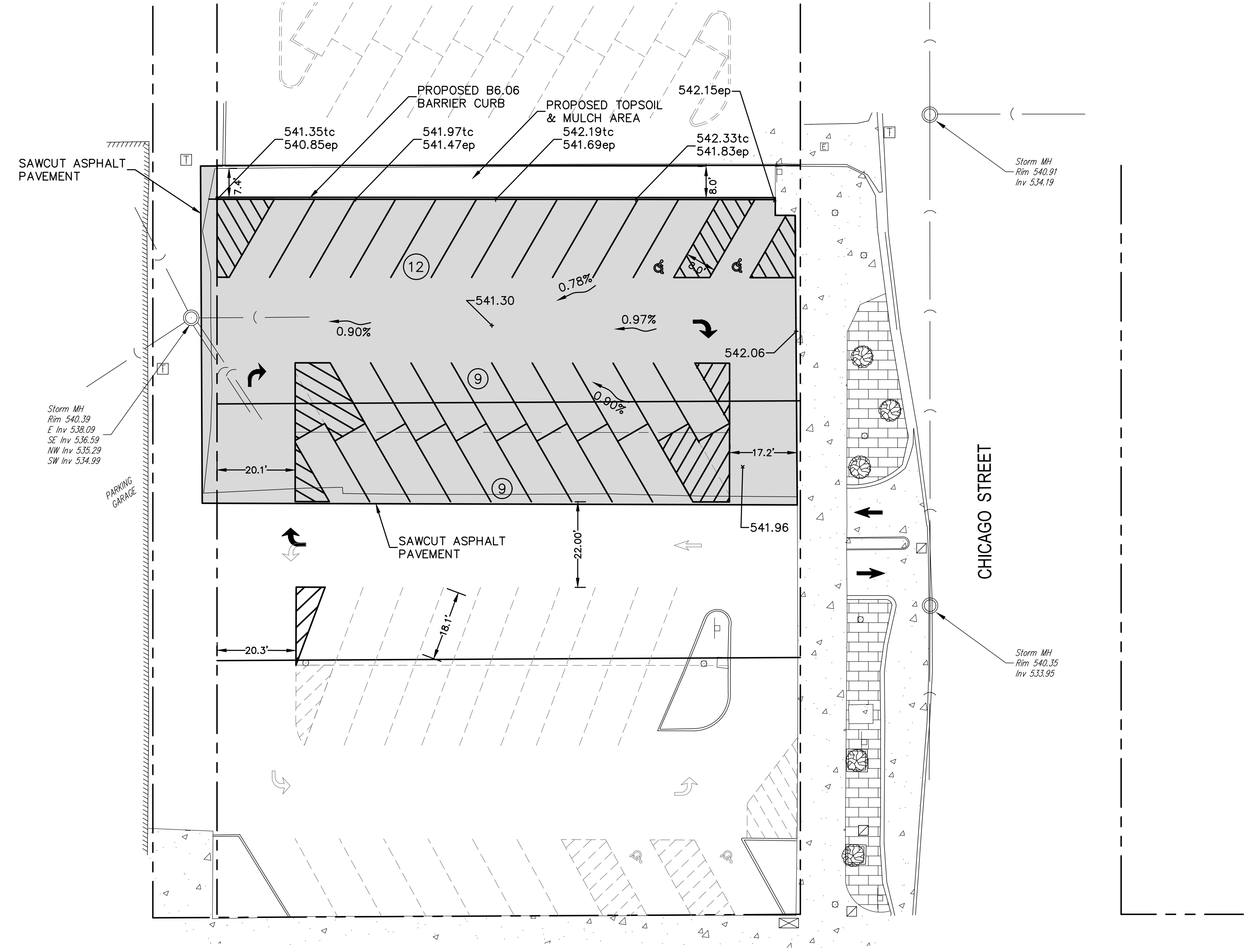


TYPICAL PARKING STALL DETAIL



EXISTING CONDITIONS

EXISTING PARKING TABLE	
REGULAR SPACES	26
HANDICAP SPACES	2



PROPOSED SITE PLAN / GRADING PLAN

TOTAL PARKING TABLE	
REGULAR SPACES	54
HANDICAP SPACES	4

NOTES:

1. PROVIDE SEDIMENT CONTROL DEVICES FOR ALL STORM INLET STRUCTURES WITHIN OR ADJACENT TO PROJECT LIMITS
2. ALL PAVEMENT MARKING IS YELLOW THERMOPLASTIC.

LEGEND

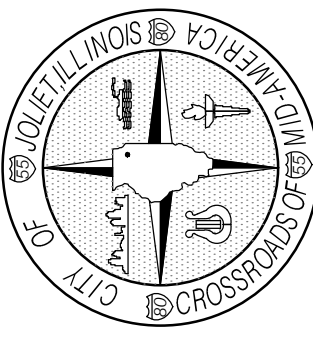
	Limits of Improvements
--	------------------------

2019 TEMPORARY CHICAGO STREET
PARKING LOT IMPROVEMENTS PROJECT
SITE PLAN / GRADING PLAN

CHECKED BY: GPR
DESIGNED BY: SDC
DRAWN BY: LWD

SCALE: 1" = 20'
DATE: MARCH 2019
SHEET 3 OF 3

CITY OF JOLIET
DEPARTMENT OF PUBLIC WORKS
150 W. JEFFERSON STREET, JOLIET, ILLINOIS 60431
(815)-724-4200



T:\Public Works\COO\Projects\2019 Projects\Van Buren Chicago St Parking Lot\Map\SitePlan-eng.dwg Plot Date: 4/11/2019 1:55 PM