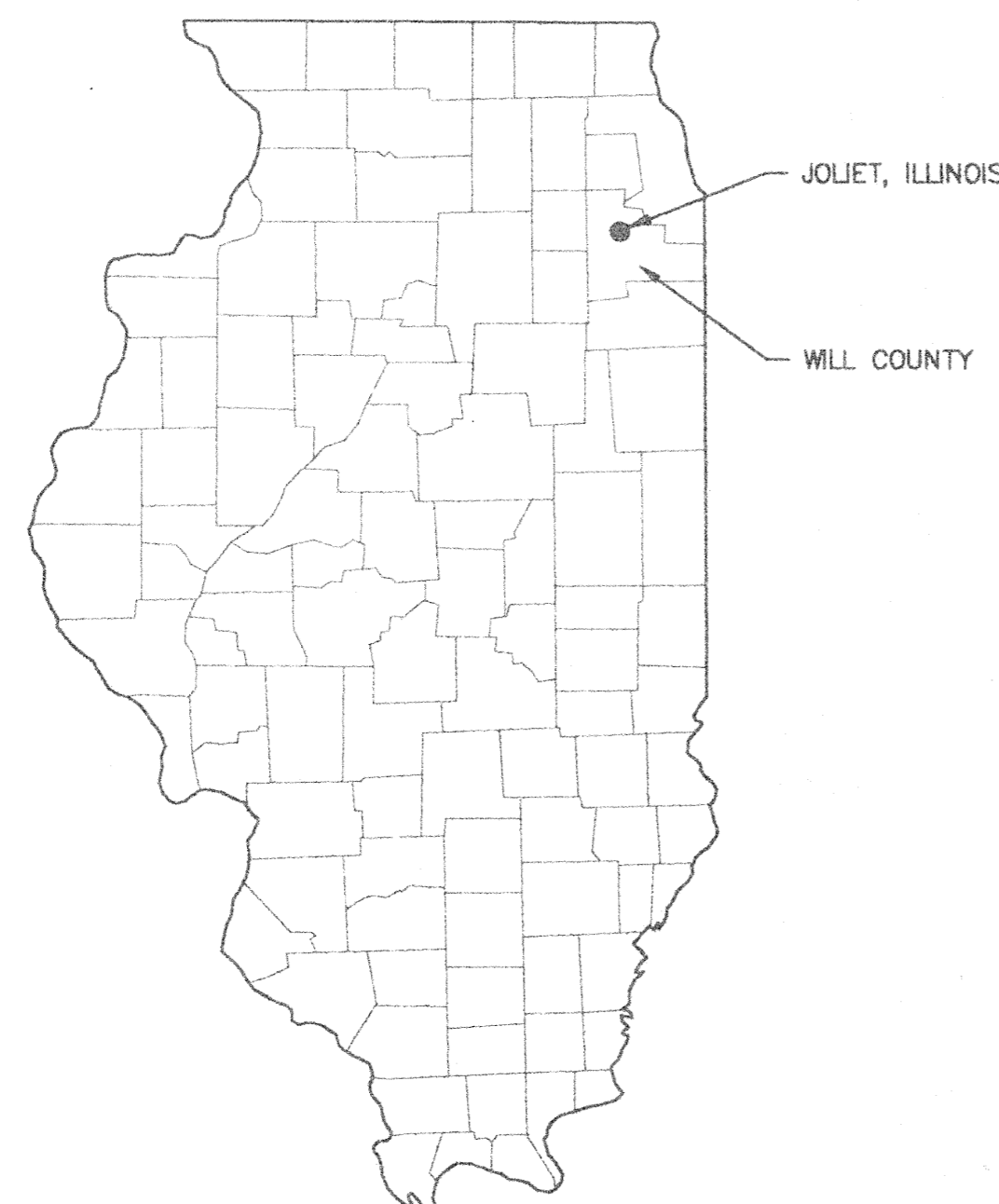


# EASTSIDE WASTEWATER TREATMENT PLANT CITY OF JOLIET, ILLINOIS SLUDGE STORAGE FACILITY PHASE II

MAY 1996



## INDEX OF DRAWINGS

- G-1 COVER DRAWING
- G-2 GENERAL INFORMATION
- PR-1 SITE PLAN
- PR-2 PROCESS FLOW DIAGRAM
- PR-3 SITE PIPING
- PR-4 DETAILS
- PR-5 SLUDGE BED REMOVAL
- E-1 ELECTRICAL SITE PLAN
- E-2 PUMP BUILDING CONTROL DIAGRAM

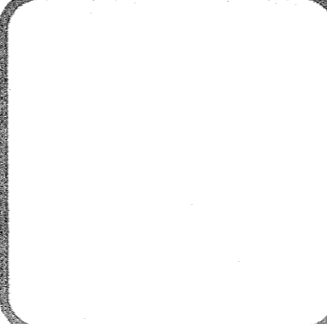
BID SET  
SET NO. \_\_\_\_\_

NOTE: DIMENSIONAL DATA IS NOT TO BE OBTAINED BY SCALING ANY PORTION OF THIS DRAWING.

DESIGNED BY:	JLE	3/96
DRAWN BY:	JLE	3/96
CHECKED BY:	BDS	4/96
APPROVED BY:	RJC	4/96
ACTIVITY	INITIALS	DATE

NO.	DATE	REVISION	APP'D.

DATE	DISTRIBUTION



**CDI** **CLARK DIETZ, INC.**  
ENGINEERS ARCHITECTS

CHAMPAIGN, ILLINOIS CHICAGO, ILLINOIS KENOSHA, WISCONSIN

EASTSIDE WASTEWATER  
TREATMENT PLANT  
CITY OF JOLIET, ILLINOIS

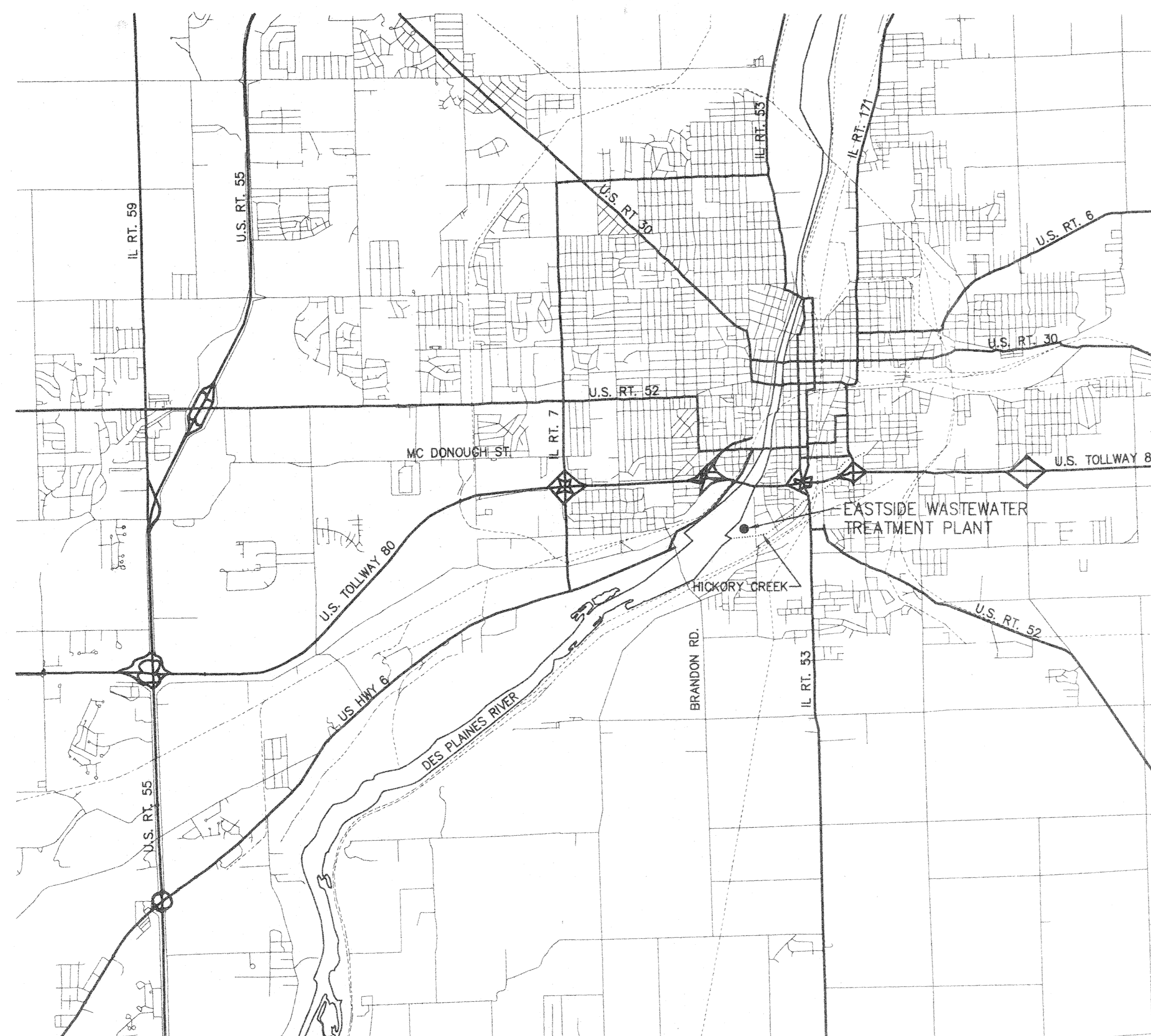
SLUDGE STORAGE FACILITY  
PHASE II  
COVER DRAWING

PROJECT NUMBER J02171

DRAWING NUMBER G-1

## GENERAL NOTES

1. NOT ALL OF THE GAS, POWER, OR TELEPHONE LINES, WHETHER ABOVE OR BELOW GROUND, HAVE BEEN SHOWN ON THE DRAWINGS. THE CONTRACTOR MUST REALIZE THAT THE ACTUAL LOCATIONS OF THE UTILITIES SHOWN ON THE DRAWINGS MAY BE DIFFERENT FROM THE LOCATIONS INDICATED.
2. THE LOCATIONS OF THE EXISTING YARD PIPING, SUCH AS RAW SEWAGE LINES, DRAIN LINES, NON-POTABLE WATER LINES, ETC., AS SHOWN ON THE DRAWINGS, HAVE BEEN DETERMINED FROM PLANS FOR THE EXISTING FACILITIES AND ARE GIVEN FOR THE CONVENIENCE OF THE CONTRACTOR. THE CONTRACTOR MUST ASSUME RESPONSIBILITY FOR ALL PIPING AND MUST REALIZE THAT THE ACTUAL LOCATIONS MAY BE DIFFERENT FROM THOSE INDICATED ON THE DRAWINGS.
3. IT SHALL BE THE CONTRACTOR'S RESPONSIBILITY TO MAINTAIN IN SERVICE THE WASTEWATER TREATMENT FACILITY, ALL EXISTING PROCESS PIPING, AND ALL EXISTING UTILITIES ENCOUNTERED DURING CONSTRUCTION UNLESS OTHERWISE INDICATED IN THE DRAWINGS. ANY PIPING WHICH CAN BE REMOVED DURING CONSTRUCTION WITHOUT UNDUE INTERRUPTION OF SERVICE MAY BE REMOVED AND REPLACED BY THE CONTRACTOR WITH THE PERMISSION OF THE OWNER.
4. BEFORE WORKING WITH OR AROUND EXISTING UTILITIES, THE APPLICABLE UTILITY COMPANY SHALL BE CONTACTED BY THE CONTRACTOR.
5. THE CONTRACTOR SHALL PRESERVE AND PROTECT PROPERTY MARKERS, SECTION CORNERS, SURVEY MARKS AND CITY BENCH MARKS, SUCH AS STONES, PIPES, OR OTHER MONUMENTS ENCOUNTERED. IF THE CONTRACTOR MUST RELOCATE THE PROPERTY MARKERS OR MONUMENTS, THEIR LOCATION SHALL BE REFERENCED BY A REGISTERED LAND SURVEYOR AND THE OWNER NOTIFIED BEFORE MOVING. ALL PROPERTY MARKERS AND MONUMENTS RELOCATED DURING CONSTRUCTION SHALL BE RE-ESTABLISHED BY A REGISTERED LAND SURVEYOR AT THE CONTRACTOR'S EXPENSE.
6. THE CONTRACTOR SHALL FAMILIARIZE HIMSELF WITH THE AREA AND NO EXTRA COMPENSATION CONNECTED WITH OVERHEAD UTILITIES WILL BE ALLOWED.
7. THE CONTRACTOR IS RESPONSIBLE FOR DUST AND MUD CONTROL.
8. ROADWAY SURFACING AND BASE MATERIALS, OR ANY OTHER PROPERTY REMOVED OR DAMAGED, SHALL BE REPLACED OR REPAIRED AS PROVIDED FOR IN THE SPECIFICATIONS OR OTHER CONTRACT DOCUMENTS.
9. THE CONTRACTOR IS RESPONSIBLE FOR ALL CONSTRUCTION TRAFFIC CONTROL.
10. IT IS INTENDED THAT GRADING BE PROVIDED TO ASSURE ADEQUATE DRAINAGE AWAY FROM THE BUILDINGS AND STRUCTURES. ALL GRADING SHALL BE APPROVED BY THE OWNER.
11. THE CONTRACTOR IS SOLELY AND COMPLETELY RESPONSIBLE FOR JOB SITE CONDITIONS DURING THE COURSE OF CONSTRUCTION OF THIS PROJECT, INCLUDING EROSION CONTROL AND THE SAFETY OF ALL PERSONS AND PROPERTY; THIS REQUIREMENT SHALL APPLY CONTINUOUSLY AND NOT BE LIMITED TO NORMAL WORKING HOURS, AND THE CONTRACTOR SHALL DEFEND, INDEMNIFY AND HOLD THE OWNER AND THE ENGINEER HARMLESS FROM ALL LIABILITY, REAL OR ALLEGED, IN CONNECTION WITH THE PERFORMANCE OR WORK ON THE PROJECT EXCEPTING FOR LIABILITY ARISING FROM THE SOLE NEGLIGENCE OF THE OWNER OR THE ENGINEER.
12. INFORMATION ON DETAIL DRAWINGS TAKES PRIORITY OVER ALL GENERAL DRAWINGS AND SCHEDULES. CONFLICTS SHALL BE RESOLVED ACCORDINGLY.
13. WHEN CONNECTIONS ARE TO BE MADE TO EXISTING PIPING AND STRUCTURES, THE LOCATION AND ELEVATION OF THE EXISTING PIPING SHALL BE FIELD VERIFIED AND NOTIFICATION GIVEN TO THE OWNER IF THE EXISTING PIPING IS FOUND TO BE DIFFERENT THAN THAT SHOWN ON THE DRAWINGS.
14. THE COST OF ABIDING BY THE PROVISIONS OF PERMITS ISSUED BY VARIOUS AGENCIES SHALL BE CONSIDERED INCIDENTAL TO THE CONTRACT. ALL ASSOCIATED BONDING REQUIREMENTS AND COSTS ARE INCIDENTAL TO THE CONTRACT.
15. THE CONTRACTOR IS RESPONSIBLE FOR OBTAINING PERMITS FROM THE WILL COUNTY HIGHWAY DEPARTMENT (815/727-8476) WHEN OVERWEIGHT LOADS ARE TO BE TRANSPORTED TO AND FROM THE PLANT SITE. THE PERMIT WILL BE NECESSARY FOR LOADS EXCEEDING THE STATE MAXIMUM WEIGHT LIMIT OF 73,280 LBS. AN INDIVIDUAL PERMIT WILL BE REQUIRED FOR EACH OVERWEIGHT LOAD. THE CONTRACTOR MAY APPLY FOR THE PERMIT BY PHONE AND PICK UP AND SIGN THE PERMIT AT THE HIGHWAY DEPARTMENT OFFICES IN JOLIET. THE FOLLOWING INFORMATION WILL BE NEEDED:
  - A DESCRIPTION OF THE LOAD.
  - THE LOAD ORIGIN AND DESTINATION.
  - THE LOAD'S TOTAL LENGTH, WIDTH, AND HEIGHT.
  - WEIGHTS OF SEPARATE COMPONENTS OF THE LOAD (TRACTOR WEIGHT, TRAILER WEIGHT, AND THE WEIGHT OF THE OBJECT BEING MOVED).
  - LICENSE NUMBERS OF THE TRACTOR AND TRAILER BEING USED.
  - DATE THAT THE MOVE WILL TAKE PLACE.



### PROJECT LOCATION MAP

SCALE: 1"=4000'±

NOTE: DIMENSIONAL DATA IS NOT TO BE OBTAINED BY SCALING ANY PORTION OF THIS DRAWING.

DESIGNED BY:	JLE	3/96
DRAWN BY:	JLE	3/96
CHECKED BY:	BDS	4/96
APPROVED BY:	RJC	4/96
ACTIVITY	INITIALS	DATE

NO	DATE	REVISION	APP'D
----	------	----------	-------

DATE	DISTRIBUTION
------	--------------



**CLARK DIETZ, INC.**  
ENGINEERS ARCHITECTS

CHAMPAIGN, ILLINOIS CHICAGO, ILLINOIS KENOSHA, WISCONSIN

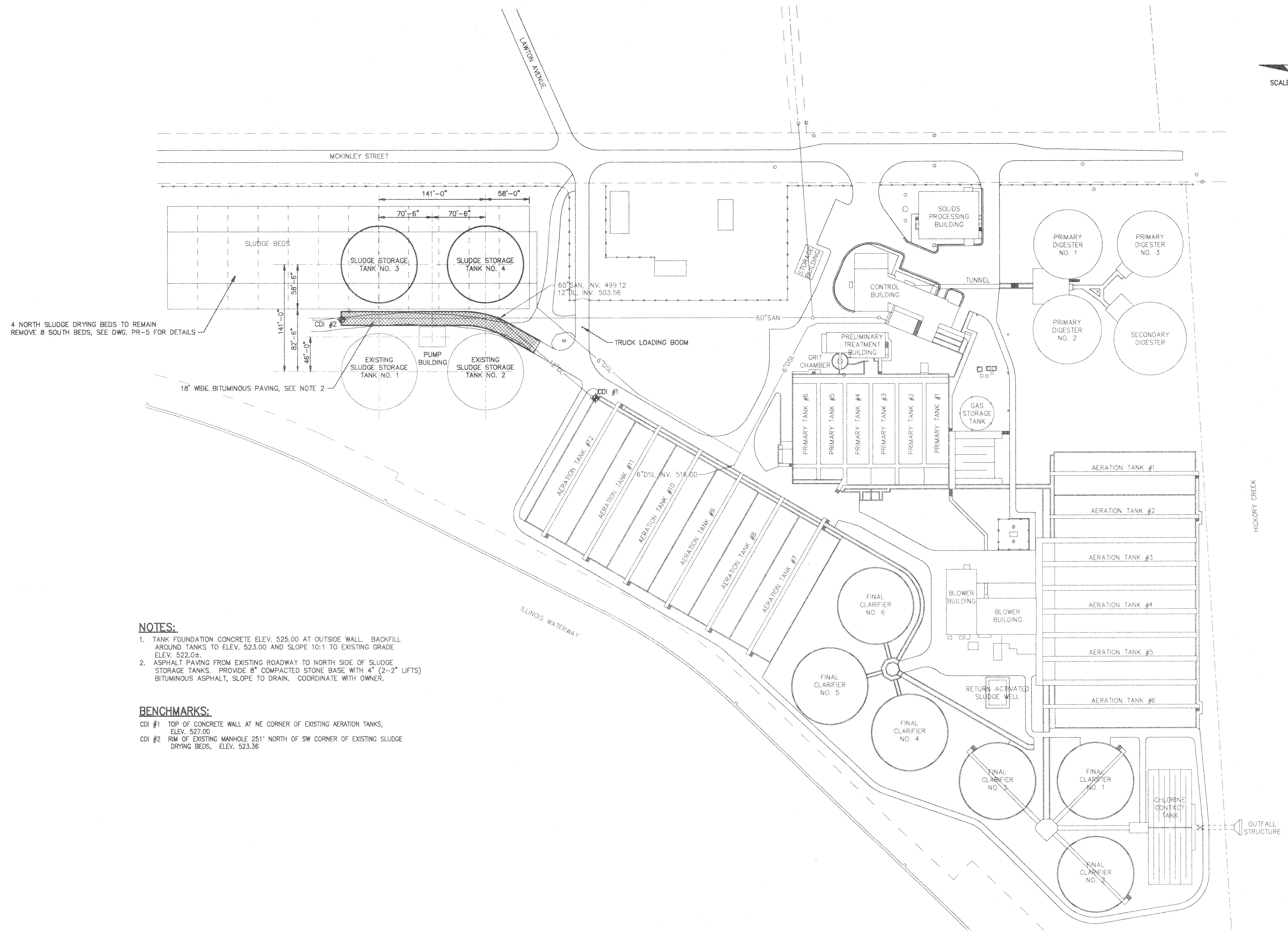
**EASTSIDE WASTEWATER  
TREATMENT PLANT  
CITY OF JOLIET, ILLINOIS**

**SLUDGE STORAGE FACILITY  
PHASE II  
GENERAL INFORMATION**

PROJECT NUMBER J02171

G-2

DRAWING NUMBER



4 NORTH SLUDGE DRYING BEDS TO REMAIN  
REMOVE 8 SOUTH BEDS, SEE DWG. PR-5 FOR DETAILS

18' WBE BITUMINOUS PAVING, SEE NOTE 2

**NOTES:**

1. TANK FOUNDATION CONCRETE ELEV. 525.00 AT OUTSIDE WALL. BACKFILL AROUND TANKS TO ELEV. 523.00 AND SLOPE 10:1 TO EXISTING GRADE ELEV. 522.0±.
2. ASPHALT PAVING FROM EXISTING ROADWAY TO NORTH SIDE OF SLUDGE STORAGE TANKS. PROVIDE 8" COMPACTED STONE BASE WITH 4" (2-2" LIFTS) BITUMINOUS ASPHALT, SLOPE TO DRAIN. COORDINATE WITH OWNER.

**BENCHMARKS:**

- CDI #1 TOP OF CONCRETE WALL AT NE CORNER OF EXISTING AERATION TANKS, ELEV. 527.00
- CDI #2 RIM OF EXISTING MANHOLE 251' NORTH OF SW CORNER OF EXISTING SLUDGE DRYING BEDS, ELEV. 523.36

NOTE: DIMENSIONAL DATA IS NOT TO BE OBTAINED BY SCALING ANY PORTION OF THIS DRAWING.

DESIGNED BY:	JLE	3/96
DRAWN BY:	JLE	3/96
CHECKED BY:	BDS	4/96
APPROVED BY:	RJC	4/96
ACTIVITY	DIGITALS	DATE

NO	DATE	REVISION	APP'D

DATE	DISTRIBUTION

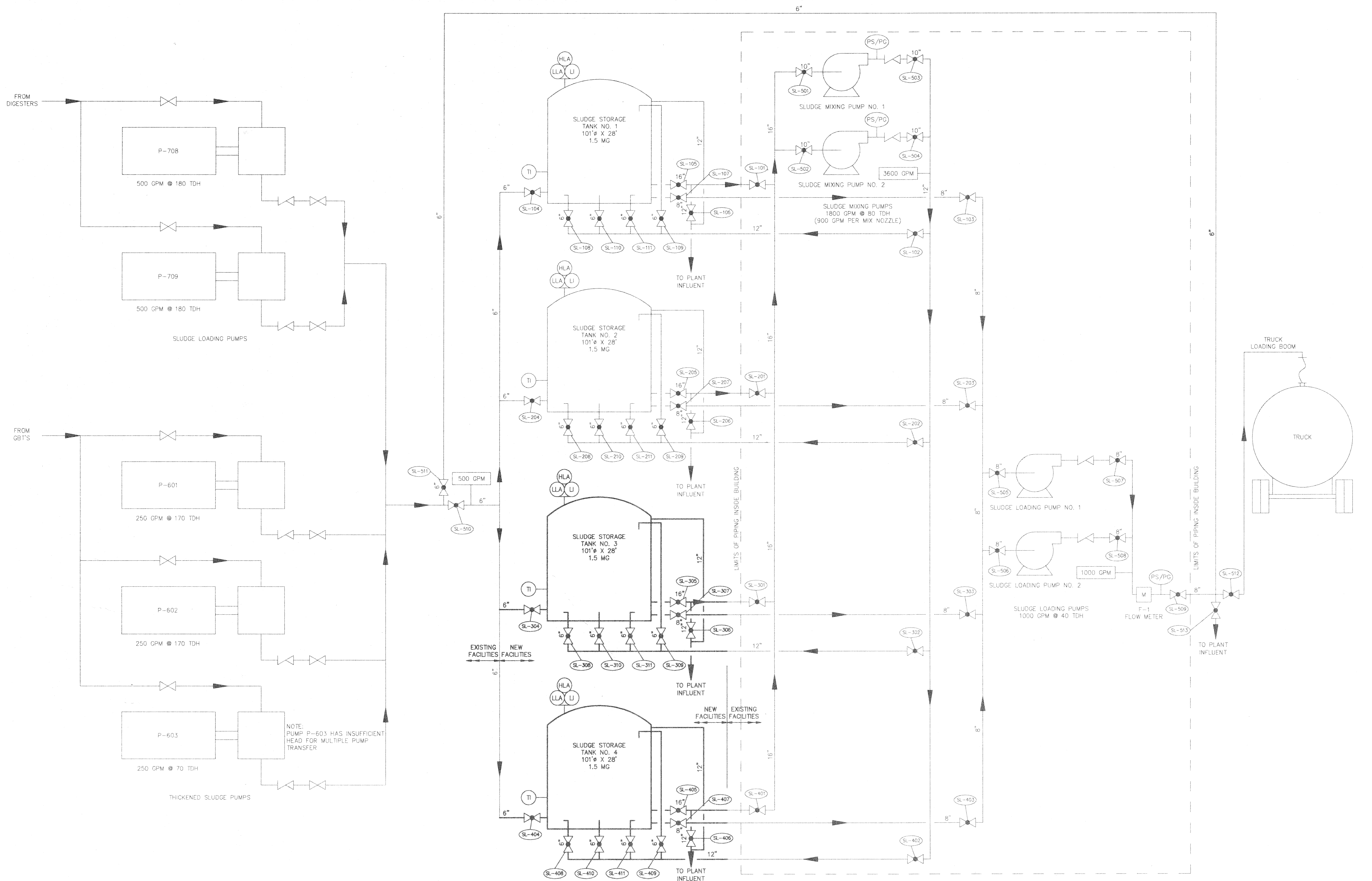


**CDI** CLARK DIETZ, INC.  
ENGINEERS ARCHITECTS  
CHAMPAIGN, ILLINOIS CHICAGO, ILLINOIS KENOSHA, WISCONSIN

EASTSIDE WASTEWATER TREATMENT PLANT  
CITY OF JOLIET, ILLINOIS

SLUDGE STORAGE FACILITY  
PHASE II  
SITE PLAN

PROJECT NUMBER J02171  
DRAWING NUMBER PR-1



NOTE: DIMENSIONAL DATA IS NOT TO BE OBTAINED BY SCALING ANY PORTION OF THIS DRAWING.

DESIGNED BY:	JLE	3/96
DRAWN BY:	JLE	3/96
CHECKED BY:	BDS	4/96
APPROVED BY:	RJC	4/96
ACTIVITY	INITIALS	DATE

NO.	DATE	REVISION	APP'D

DATE	DISTRIBUTION

**CDI** CLARK DIETZ, INC.  
ENGINEERS ARCHITECTS

CHAMPAIGN, ILLINOIS CHICAGO, ILLINOIS KENOSHA, WISCONSIN

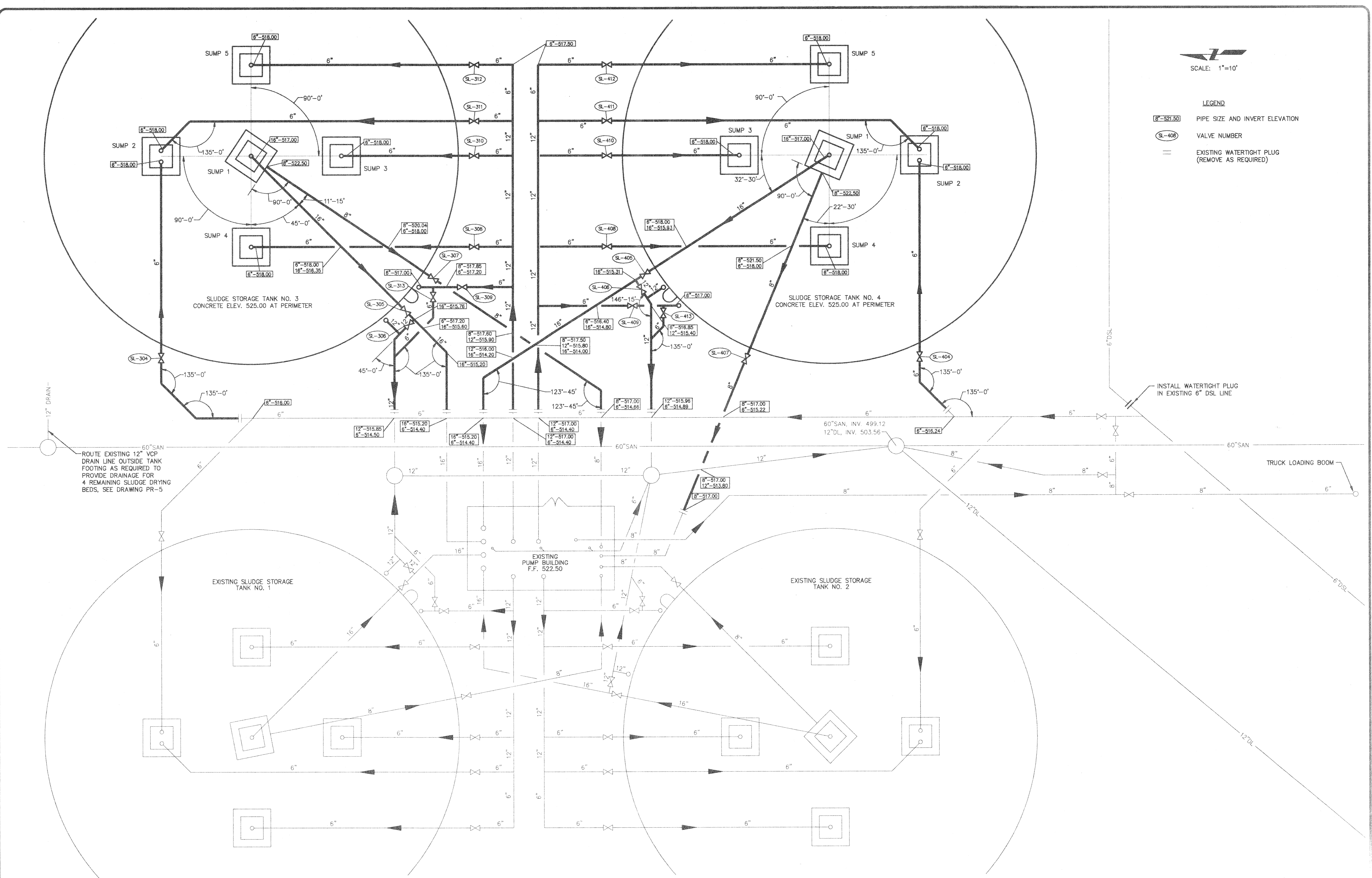
EASTSIDE WASTEWATER TREATMENT PLANT  
CITY OF JOLIET, ILLINOIS

SLUDGE STORAGE FACILITY  
PHASE II  
PROCESS FLOW DIAGRAM

PROJECT NUMBER J02171  
DRAWING NUMBER PR-2

SCALE: 1"=10'

LEGEND  
 6"-521.50 PIPE SIZE AND INVERT ELEVATION  
 SL-408 VALVE NUMBER  
 = EXISTING WATERTIGHT PLUG (REMOVE AS REQUIRED)



NOTE: DIMENSIONAL DATA IS NOT TO BE OBTAINED BY SCALING ANY PORTION OF THIS DRAWING.

DESIGNED BY:	JLE	3/96
DRAWN BY:	JLE	3/96
CHECKED BY:	BDS	4/96
APPROVED BY:	RJC	4/96
ACTIVITY	INITIALS	DATE

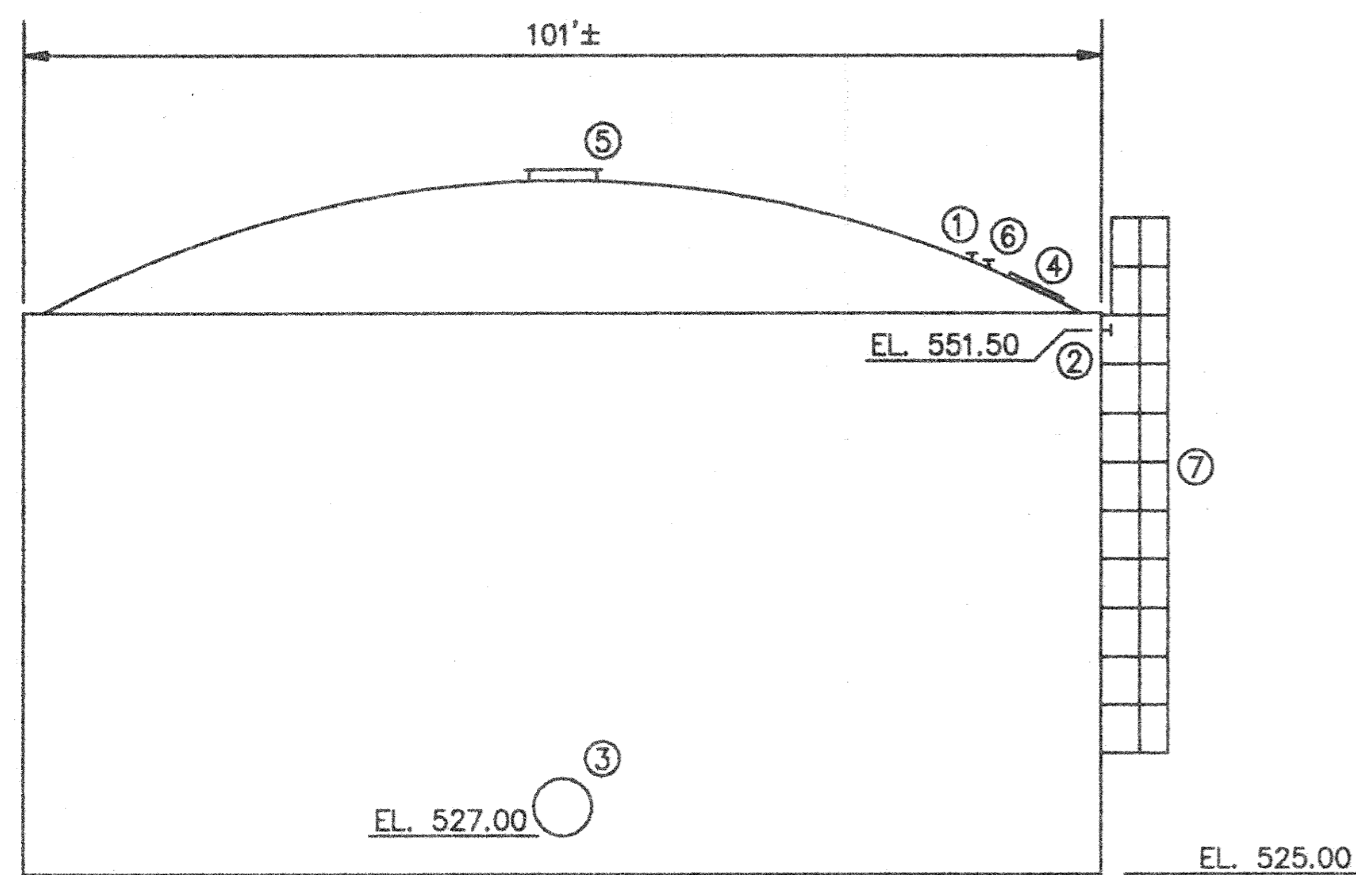
NO	DATE	REVISION	APP'D

DATE	DISTRIBUTION

**CDI** CLARK DIETZ, INC.  
 ENGINEERS ARCHITECTS  
 CHAMPAIGN, ILLINOIS CHICAGO, ILLINOIS KENOSHA, WISCONSIN

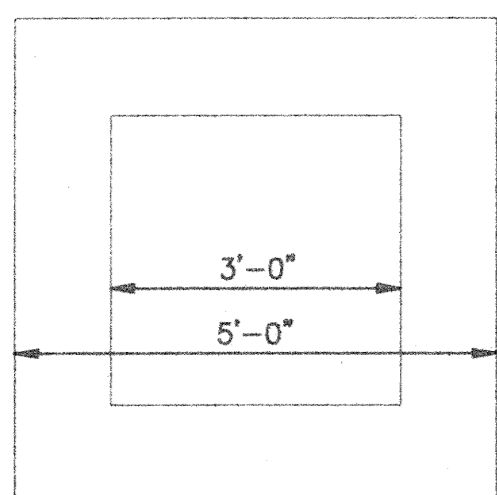
EASTSIDE WASTEWATER TREATMENT PLANT  
 CITY OF JOLIET, ILLINOIS

SLUDGE STORAGE FACILITY  
 PHASE II  
 SITE PIPING

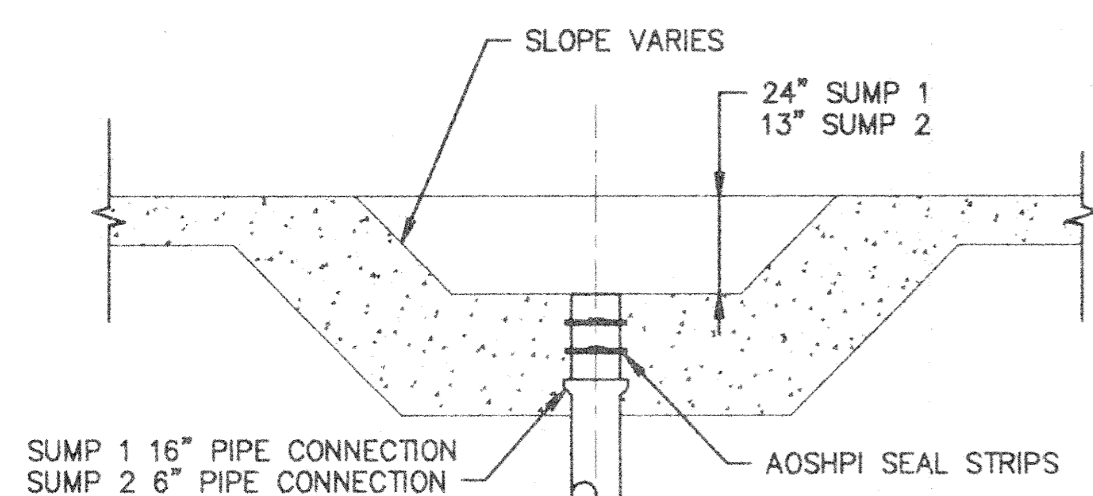


OPENING NO.	SIZE/DESCRIPTION	AXIS ORIENTATION	
1	3" FLANGE LEVEL	TANK 3 SW	TANK 4 NW
2	12" OVERFLOW	SW	NW
3	30" MANWAY (2 TOTAL)	E & W	E & W
4	36" X 36" MIN. ACCESS HATCH	SW TOP	NW TOP
5	42" VENT	CENTER TOP	CENTER TOP
6	8" SAMPLE PORT	SW TOP	NW TOP
7	LADDER W/SAFETY CAGE	SW	NW

**TANK ACCESSORIES**  
SCALE: NONE

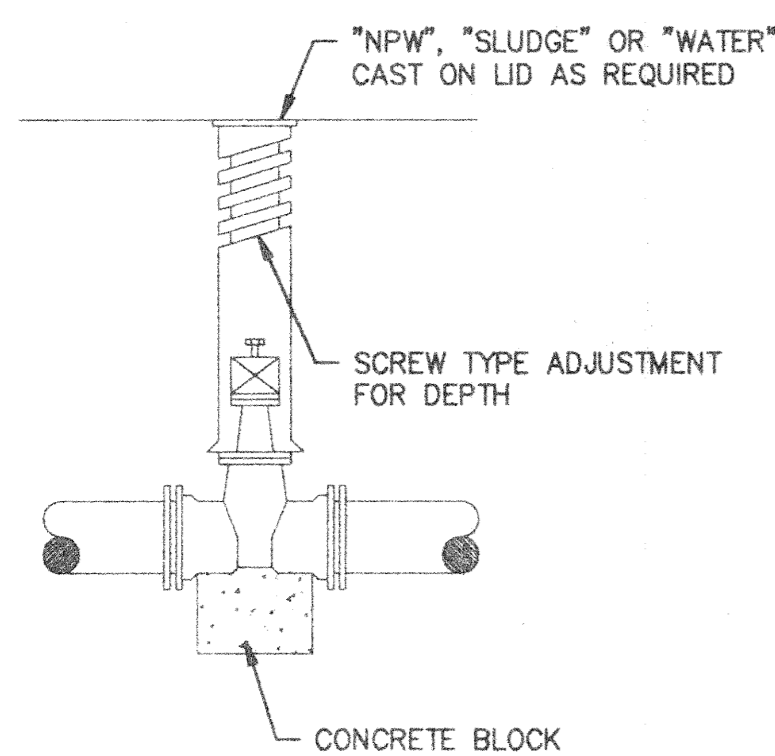


PLAN

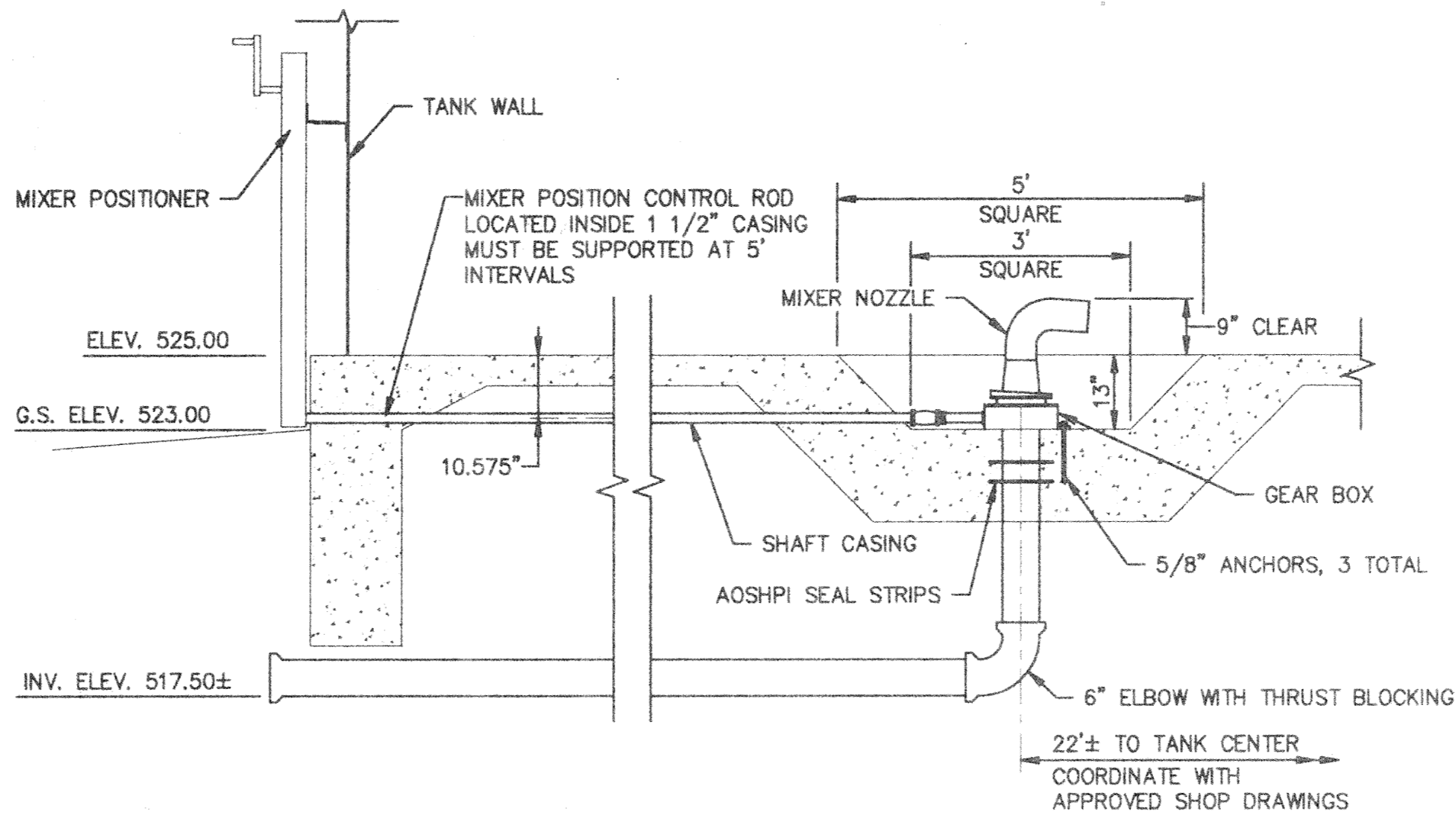


SECTION

**SUMP 1 & 2 DETAIL**  
SCALE: NONE

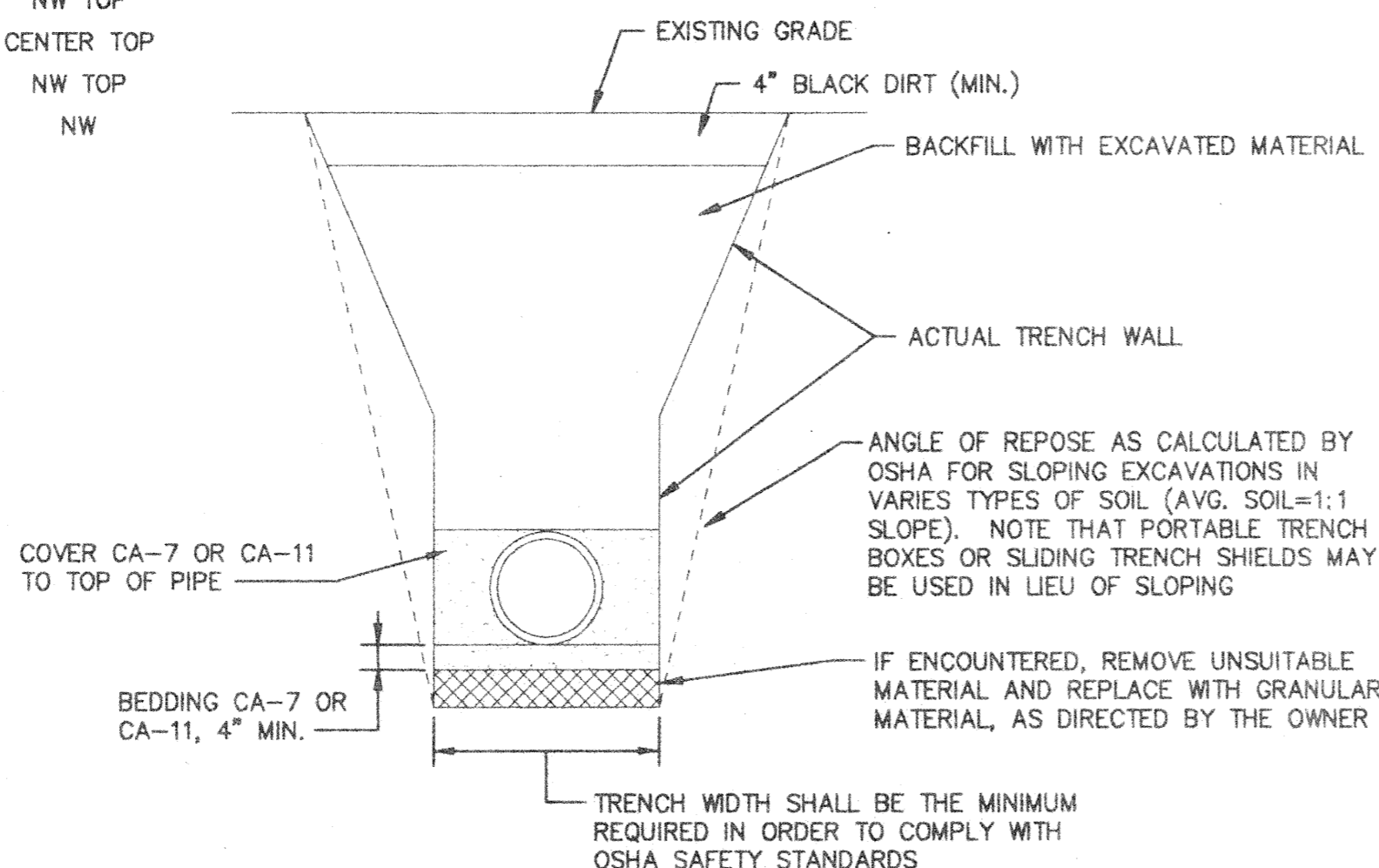


**VALVE BOX INSTALLATION**  
SCALE: NONE



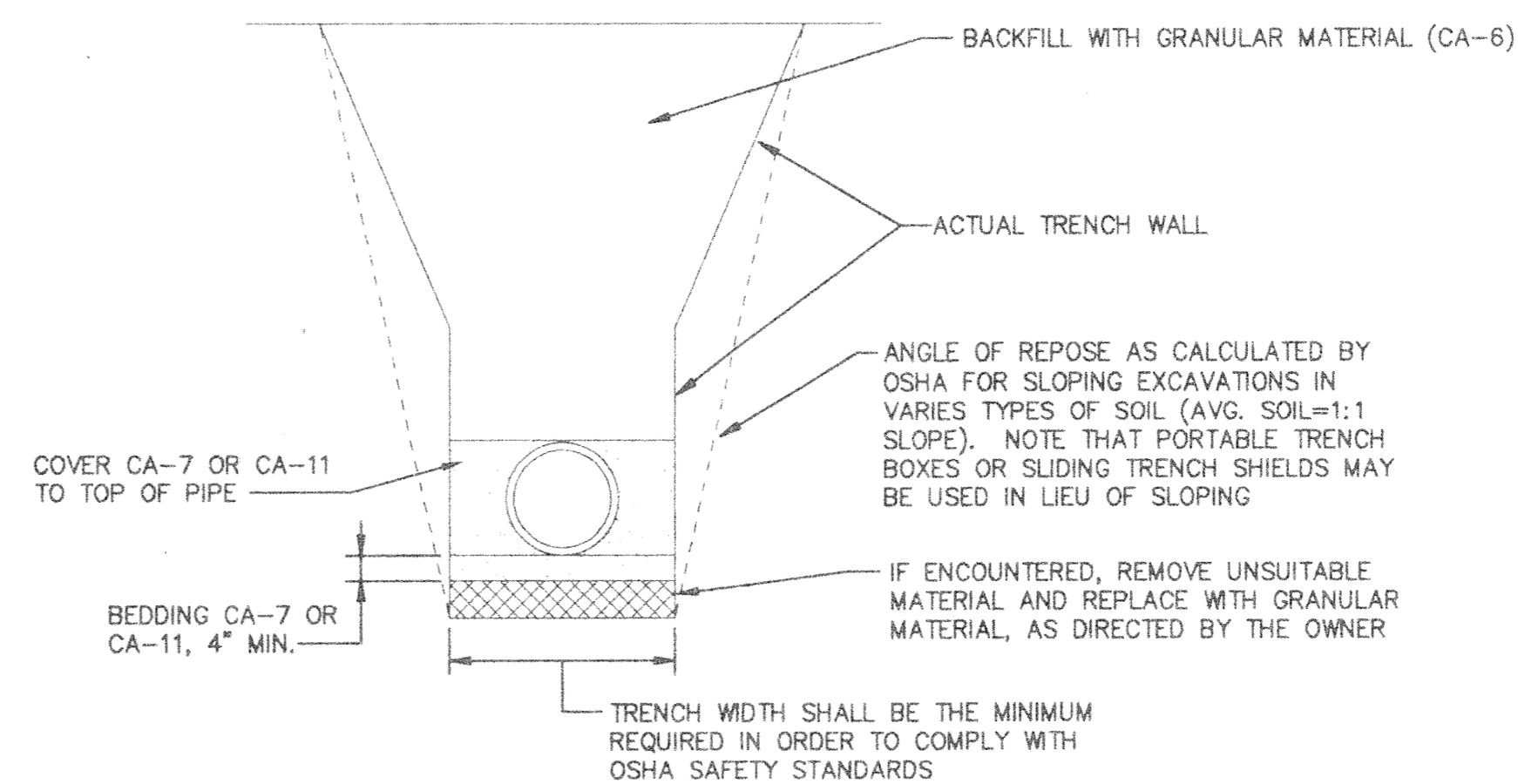
**MIXER DETAIL - SUMPS 3, 4 & 5**

SCALE: NONE



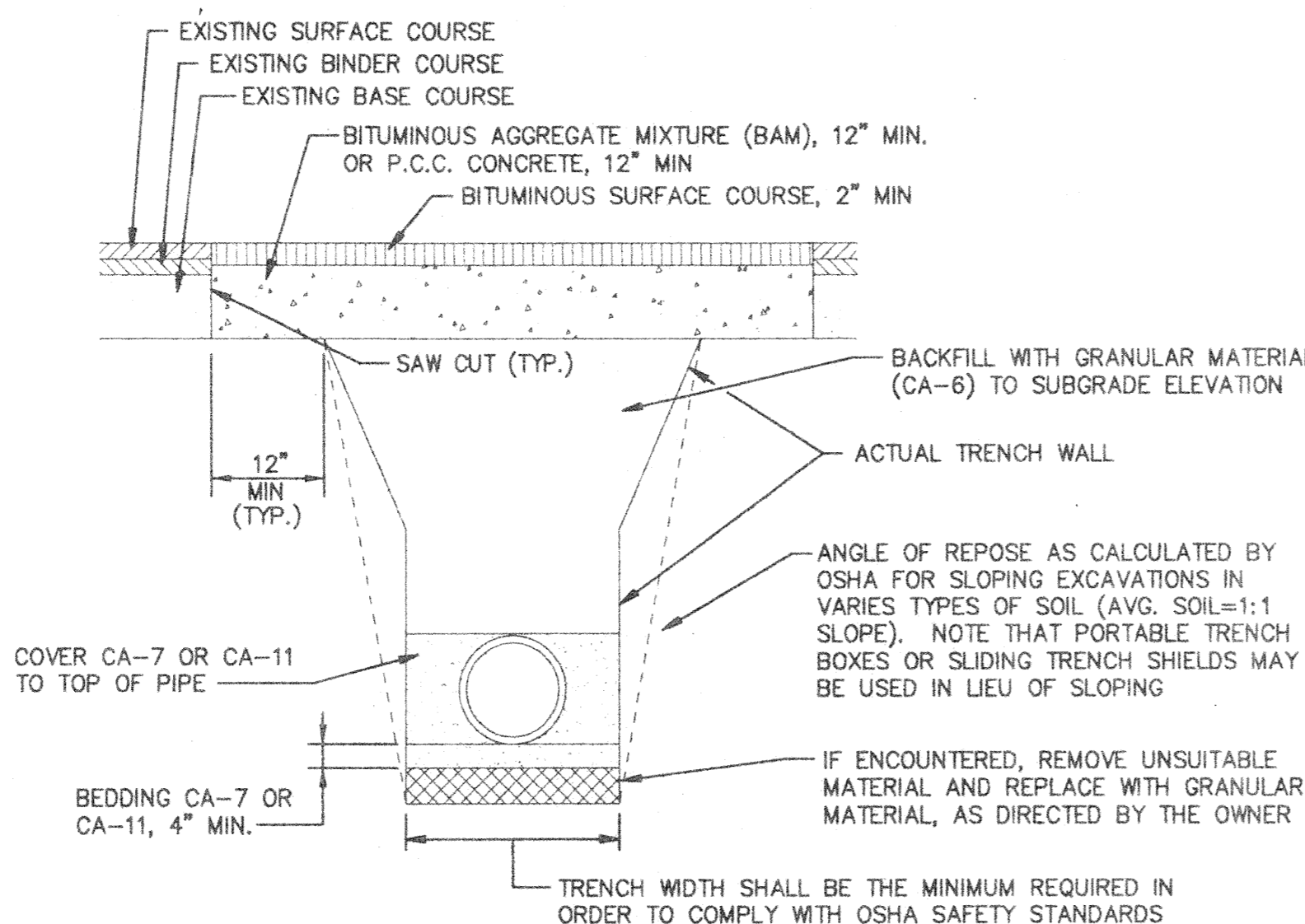
**GRASS AREA TRENCH SECTION**

SCALE: NONE



**GRAVEL DRIVES TRENCH SECTION**

SCALE: NONE

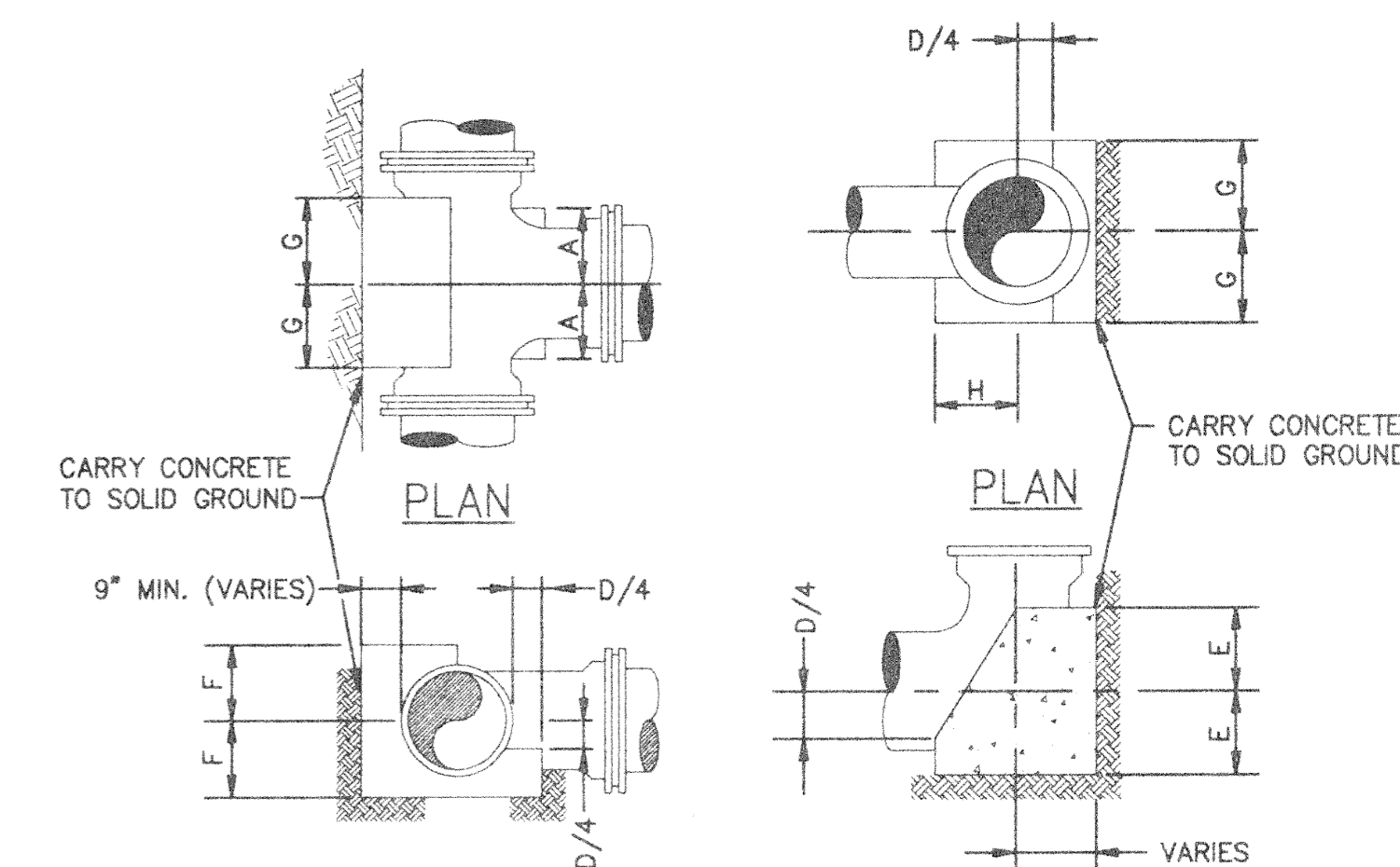


**NOTES**

- THE TRENCH SHALL BE BACKFILLED WITH CA-6, AND COMPACTED TO 95% OF THE STANDARD PROCTOR DENSITY. TRENCH SPOIL OR EXCAVATED MATERIAL SHALL BE DISCARDED BY THE CONTRACTOR, AT HIS EXPENSE, IN A SUITABLE FASHION.
- PRIOR TO THE PLACING OF THE BITUMINOUS CONCRETE MIXTURE OR PCC CONCRETE, THE EXPOSED EDGES OF ALL EXISTING PAVEMENT SHALL BE SAW CUT TO PROVIDE A SMOOTH, CLEAN EDGE, FREE OF LOOSE MATERIAL; PAINTED WITH EMULSIFIED ASPHALT.

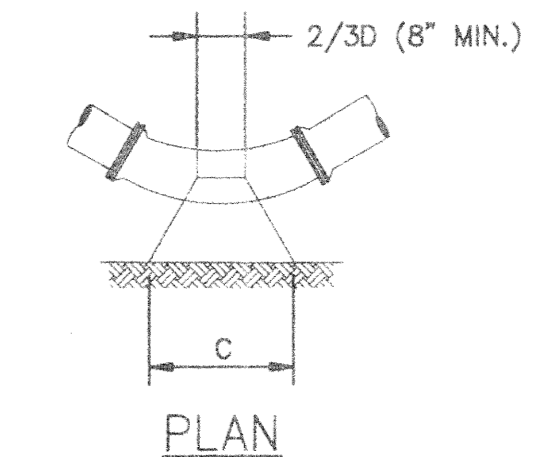
**FLEXIBLE PAVEMENTS TRENCH SECTION**

SCALE: NONE

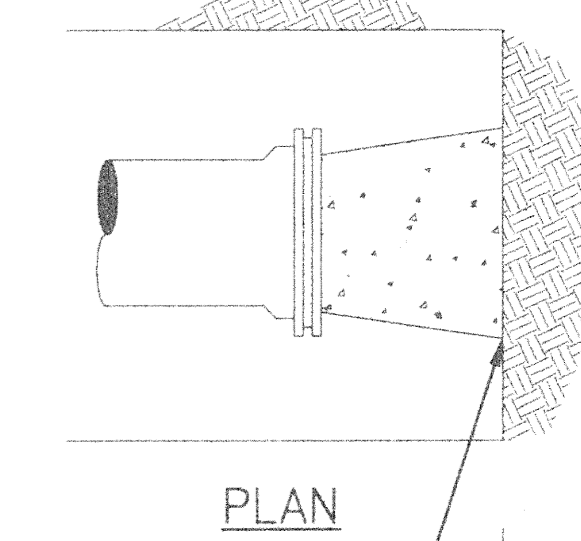


**THRUST BLOCK FOR TEES**  
SCALE: NONE

**THRUST BLOCK FOR VERTICAL ELBOW**  
SCALE: NONE



**THRUST BLOCK FOR HORIZ. BEND**  
SCALE: NONE



**THRUST BLOCK FOR CAPS**  
SCALE: NONE

**THRUST BLOCK DIMENSIONS**

D	A	B	C	E	F	G	H	I	J	K
6"	9"	1'-5"	1'-3"	8"	1'-0"	1'-1"	8"	3'-0"	2'-6"	2'-6"
8"	5 1/4"	1'-7"	1'-8"	8"	1'-1"	1'-2"	9"	4'-0"	3'-0"	2'-9"
10"	11"	1'-10"	2'-1"	10"	1'-2"	1'-3"	11"	4'-6"	4'-0"	3'-0"
12"	1'-0"	2'-0"	2'-6"	1'-0"	1'-3"	1'-6"	1'-0"	4'-9"	4'-6"	3'-6"
14"	1'-1"	2'-2"	3'-0"	1'-2"	1'-4"	1'-6"	1'-2"	5'-6"	4'-10"	3'-9"
16"	1'-3"	2'-4"	3'-4"	1'-4"	1'-6"	1'-6"	1'-3"	6'-6"	5'-2"	4'-0"

**NOTE:**  
THRUST BLOCKING TO PREVENT MOVEMENT OF LINES UNDER PRESSURE AT BENDS, TEES, CAPS, VALVES, HYDRANTS, AND AT POINTS SPECIFIED BY THE OWNER. BLOCKS SHALL BE CLASS "X" CONCRETE A MINIMUM OF 12" THICK PLACED BETWEEN SOLID GROUND AND FITTINGS, AND SHALL BE ANCHORED IN SUCH A MANNER THAT PIPE AND FITTINGS WILL BE ACCESSIBLE FOR REPAIRS. THRUST BLOCK SHALL BE PLACED AT BENDS OF 11 1/4" OR MORE.

NOTE: DIMENSIONAL DATA IS NOT TO BE OBTAINED BY SCALING ANY PORTION OF THIS DRAWING.

DESIGNED BY:	JLE	3/96
DRAWN BY:	JLE	3/96
CHECKED BY:	BDS	4/96
APPROVED BY:	RJC	4/96

NO.	DATE	REVISION	APP'D

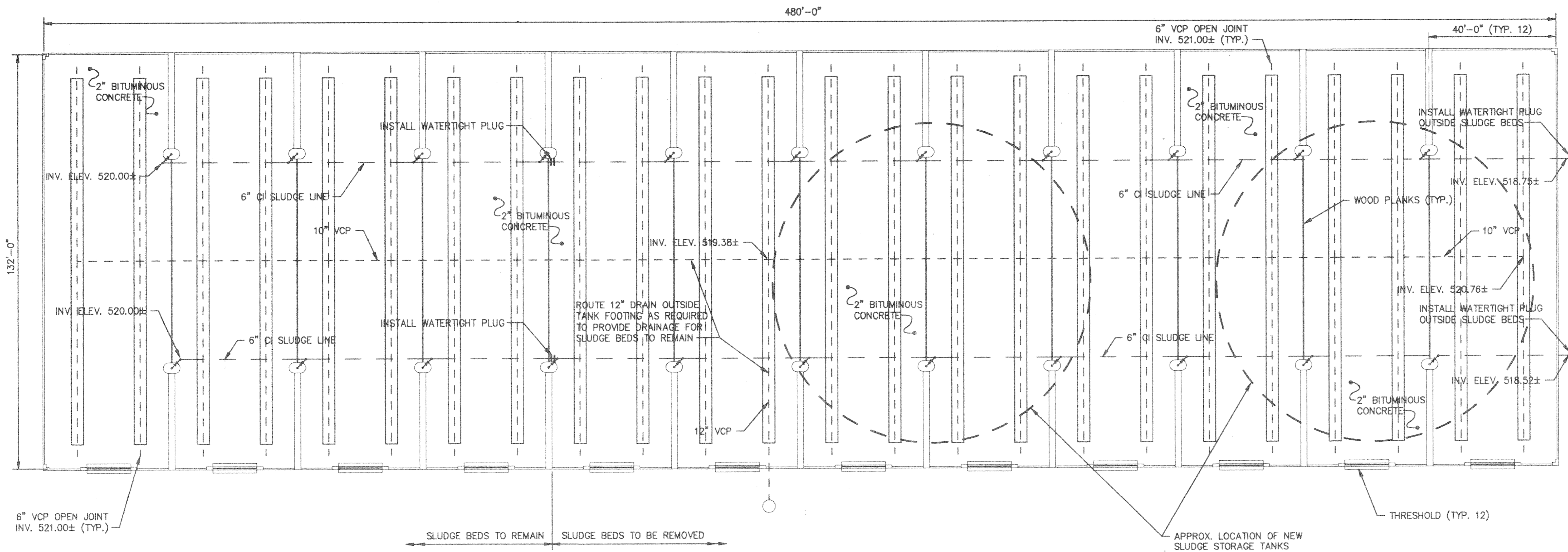
DATE	DISTRIBUTION

**CDI** CLARK DIETZ, INC.  
ENGINEERS ARCHITECTS  
CHAMPAIGN, ILLINOIS CHICAGO, ILLINOIS KENOSHA, WISCONSIN

EASTSIDE WASTEWATER TREATMENT PLANT  
CITY OF JOLIET, ILLINOIS

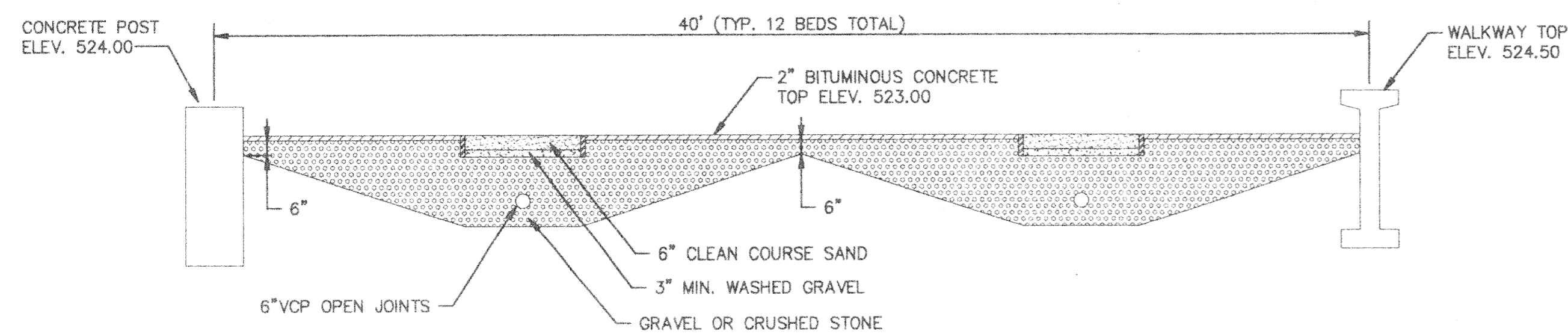
SLUDGE STORAGE FACILITY  
PHASE II  
DETAILS

PROJECT NUMBER J02171  
DRAWING NUMBER PR-4

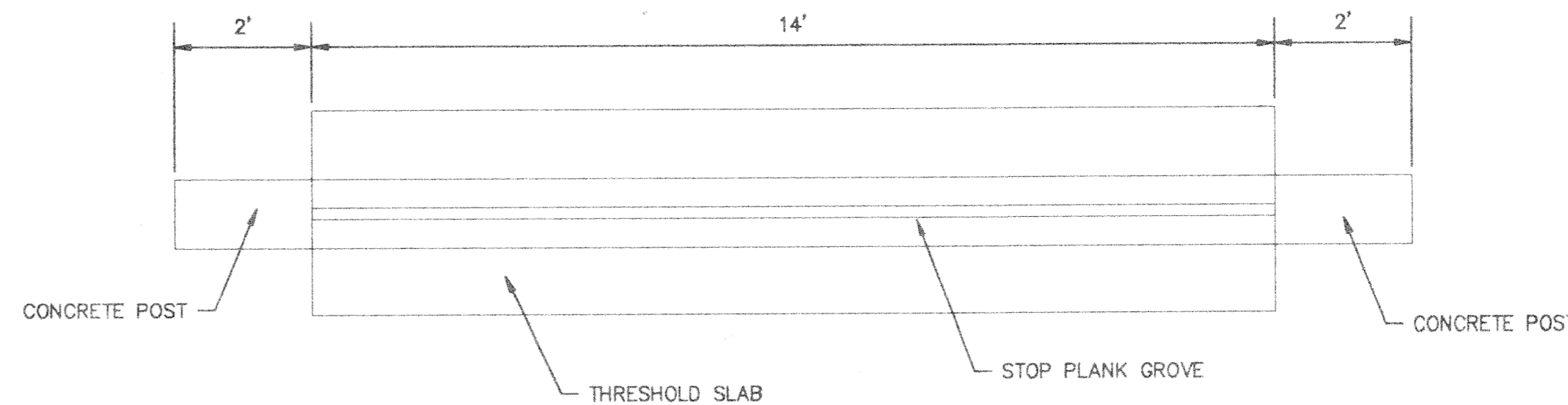


**SLUDGE BED PLAN**  
SCALE: 1" = 20'

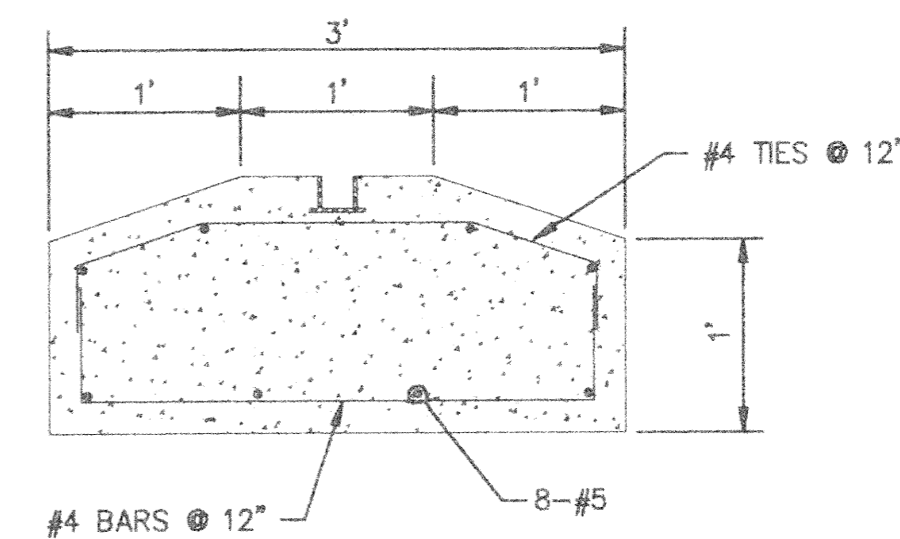
NOTE:  
CONTRACTOR TO REMOVE 8 OF 12 SLUDGE DRYING BEDS (4 NORTH BEDS TO REMAIN). ALL CONCRETE, ASPHALT, WOOD PLANKING, ETC. TO BE DISPOSED OF OFF SITE. EXISTING PIPING UNDER SLUDGE DRYING BEDS TO BE REMOVED EXCLUDING THOSE NEEDED TO MAINTAIN DRAINAGE IN BEDS TO REMAIN. EXISTING SAND AND GRAVEL MAY REMAIN IN PLACE, REMOVE AS REQUIRED FOR CONSTRUCTION OF TANK. DETAILS ARE SHOWN FOR INFORMATION ONLY, DRAWING WAS DEVELOPED FROM 1969 PROPOSED DRAWINGS, CONTRACTOR TO FIELD VERIFY DIMENSIONS AS NEEDED.



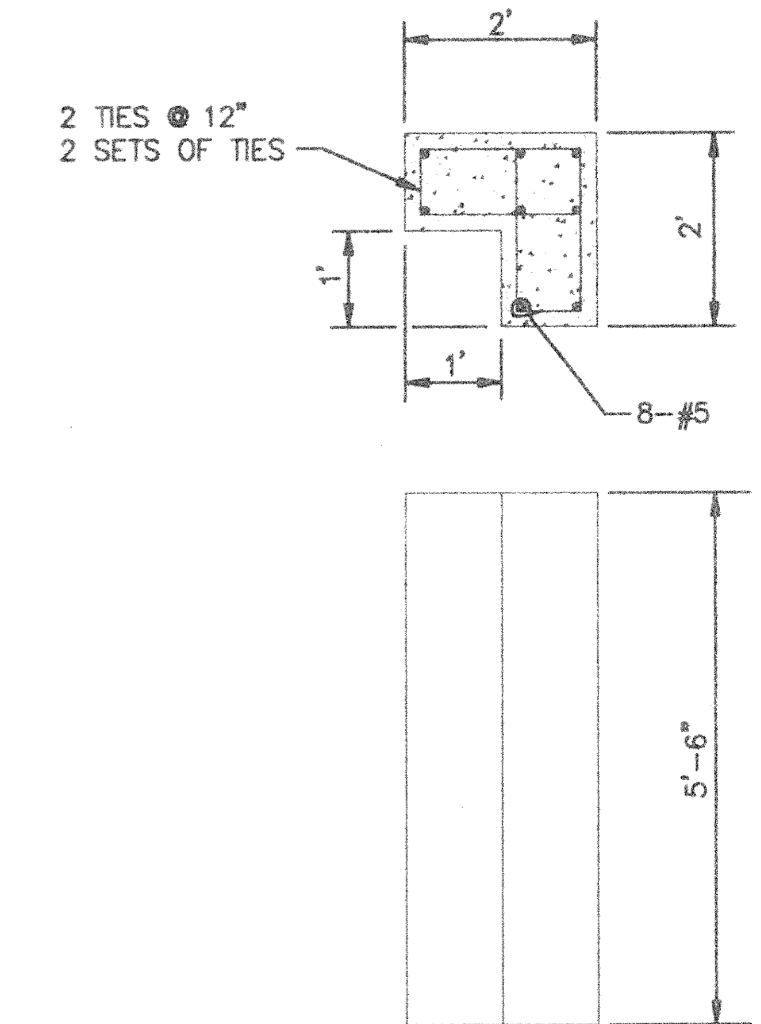
**SLUDGE BED ELEVATION**  
SCALE: 1/2" = 1'



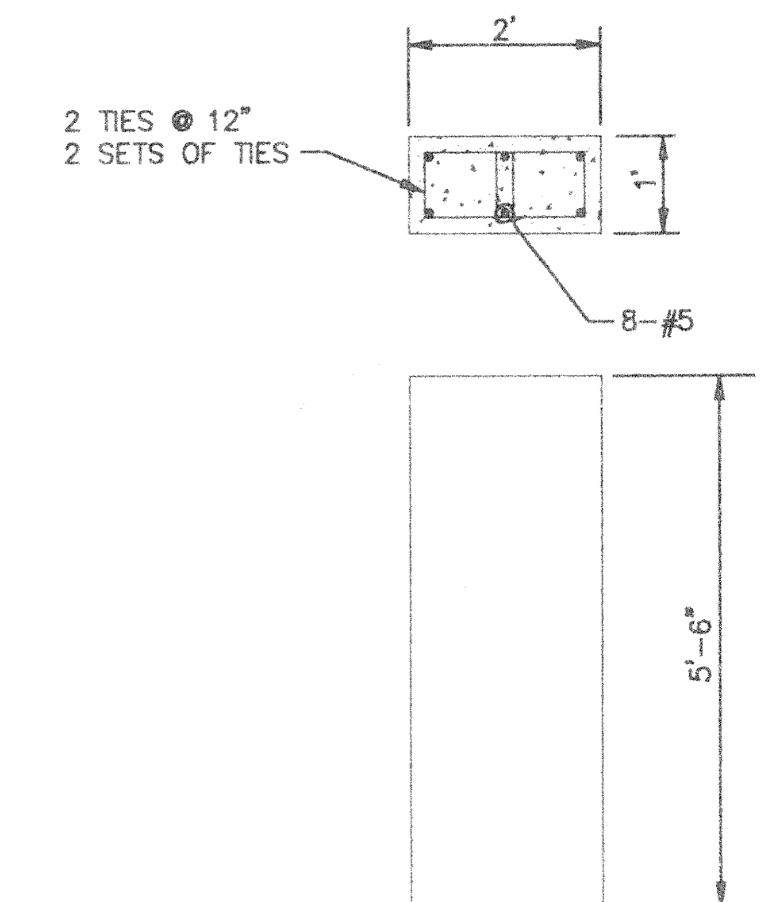
**THRESHOLD SLAB PLAN**  
SCALE: 1/2" = 1'



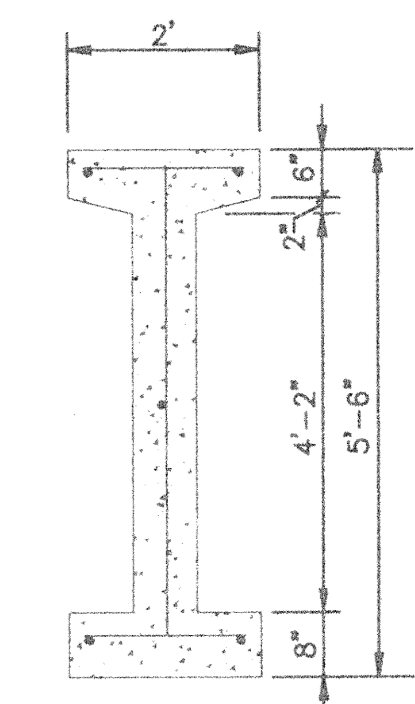
**THRESHOLD SLAB SECTION**  
SCALE: 1" = 1'



**CONCRETE CORNER POST**  
SCALE: 1/2" = 1'



**CONCRETE POST**  
SCALE: 1/2" = 1'



**CONCRETE WALKWAY SECTION**  
SCALE: 1/2" = 1'

NOTE: DIMENSIONAL DATA IS NOT TO BE OBTAINED BY SCALING ANY PORTION OF THIS DRAWING.

DESIGNED BY: \_\_\_\_\_  
DRAWN BY: \_\_\_\_\_  
CHECKED BY: \_\_\_\_\_  
APPROVED BY: \_\_\_\_\_

NO. DATE REVISION APP'D

DATE DISTRIBUTION

**CDI**

**CLARK DIETZ, INC.**  
ENGINEERS ARCHITECTS

CHAMPAIGN, ILLINOIS CHICAGO, ILLINOIS KENOSHA, WISCONSIN

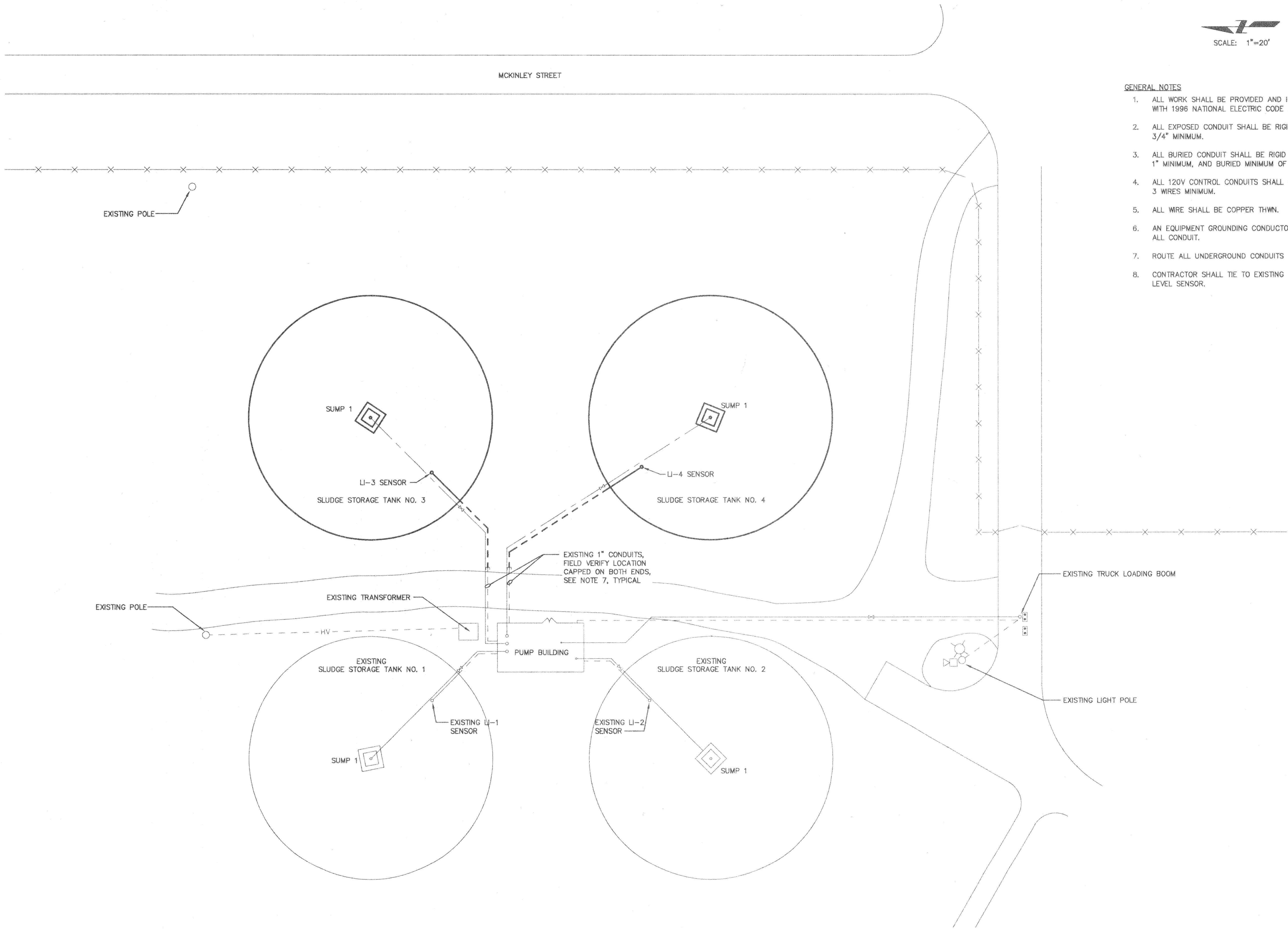
**EASTSIDE WASTEWATER  
TREATMENT PLANT  
CITY OF JOLIET, ILLINOIS**

**SLUDGE STORAGE FACILITY  
PHASE II  
SLUDGE BED REMOVAL**

PROJECT NUMBER J02171

PR-5

DRAWING NUMBER



**GENERAL NOTES**

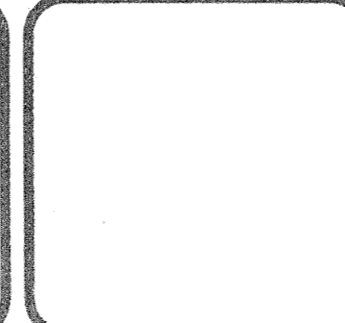
1. ALL WORK SHALL BE PROVIDED AND INSTALLED IN ACCORDANCE WITH 1996 NATIONAL ELECTRIC CODE AND ALL LOCAL CODES.
2. ALL EXPOSED CONDUIT SHALL BE RIGID GALVANIZED STEEL, 3/4" MINIMUM.
3. ALL BURIED CONDUIT SHALL BE RIGID GALVANIZED STEEL, 1" MINIMUM, AND BURIED MINIMUM OF 30" DEEP.
4. ALL 120V CONTROL CONDUITS SHALL CONTAIN 20% SPARE WRES, 3 WIRES MINIMUM.
5. ALL WIRE SHALL BE COPPER THWN.
6. AN EQUIPMENT GROUNDING CONDUCTOR SHALL BE PROVIDED IN ALL CONDUIT.
7. ROUTE ALL UNDERGROUND CONDUITS ALONG NEW PIPING AS SHOWN.
8. CONTRACTOR SHALL TIE TO EXISTING CONDUIT AS SHOWN FOR NEW LEVEL SENSOR.

NOTE: DIMENSIONAL DATA IS NOT TO BE OBTAINED BY SCALING ANY PORTION OF THIS DRAWING

DESIGNED BY:	CEC	4/96
DRAWN BY:	JRF	4/96
CHECKED BY:	SEM	4/96
APPROVED BY:	RJC	4/96
ACTIVITY	INITIALS	DATE

NO	DATE	REASON	APP'D

DATE	DISTRIBUTION



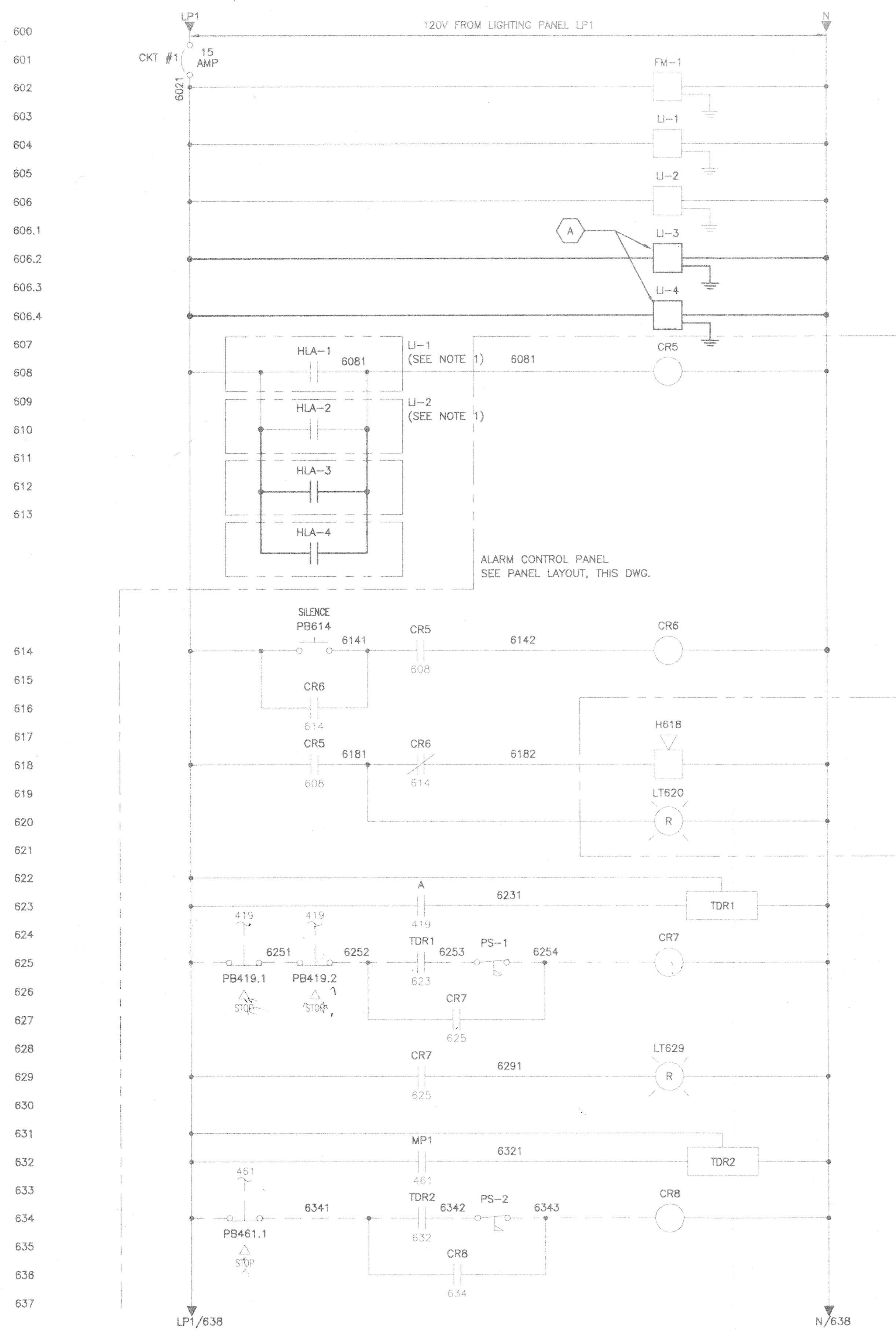
**CDI** **CLARK DIETZ, INC.**  
ENGINEERS ARCHITECTS  
CHAMPAIGN, ILLINOIS CHICAGO, ILLINOIS KENOSHA, WISCONSIN

**EASTSIDE WASTEWATER TREATMENT PLANT**  
CITY OF JOLIET, ILLINOIS

**SLUDGE STORAGE FACILITY**  
PHASE II  
ELECTRICAL SITE PLAN

PROJECT NUMBER: J02171  
DRAWING NUMBER: E-1





- LOADING FLOW METER WITH TOTALIZER FM-1
- SLUDGE STORAGE TANK LEVEL INDICATOR LI-1
- SLUDGE STORAGE TANK LEVEL INDICATOR LI-2
- SLUDGE STORAGE TANK LEVEL INDICATOR LI-3
- SLUDGE STORAGE TANK LEVEL INDICATOR LI-4

CP	
LI	614 618

CP	
CR	616
CR	618

- ALARM HORN ON LIGHT POLE SEE DWG E-1 FOR LOCATION
- FLASHING BEACON ON LIGHT POLE SEE DWG E-1 FOR LOCATION

CP	
LI	625

- PRESSURE SWITCH PS-1

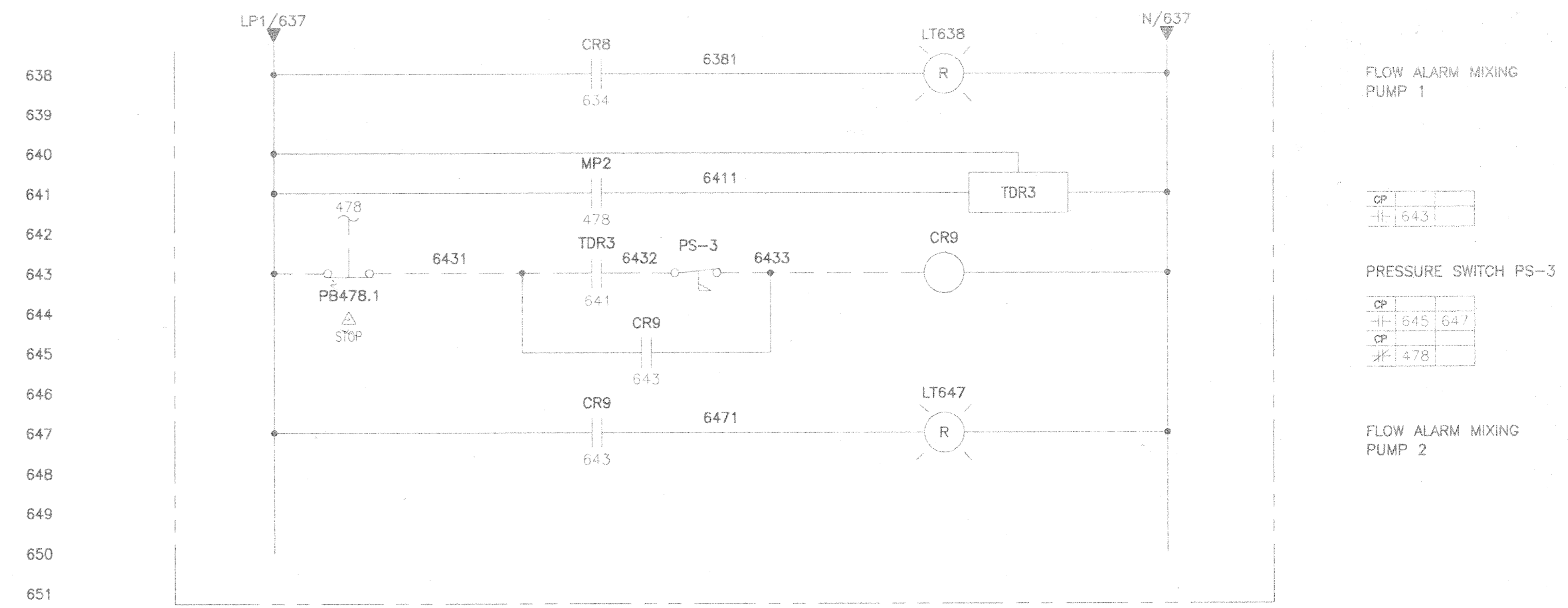
CP	
LI	627 629
CR	419

- FLOW ALARM TRUCK LOADING PUMPS

CP	
LI	634

- PRESSURE SWITCH PS-2

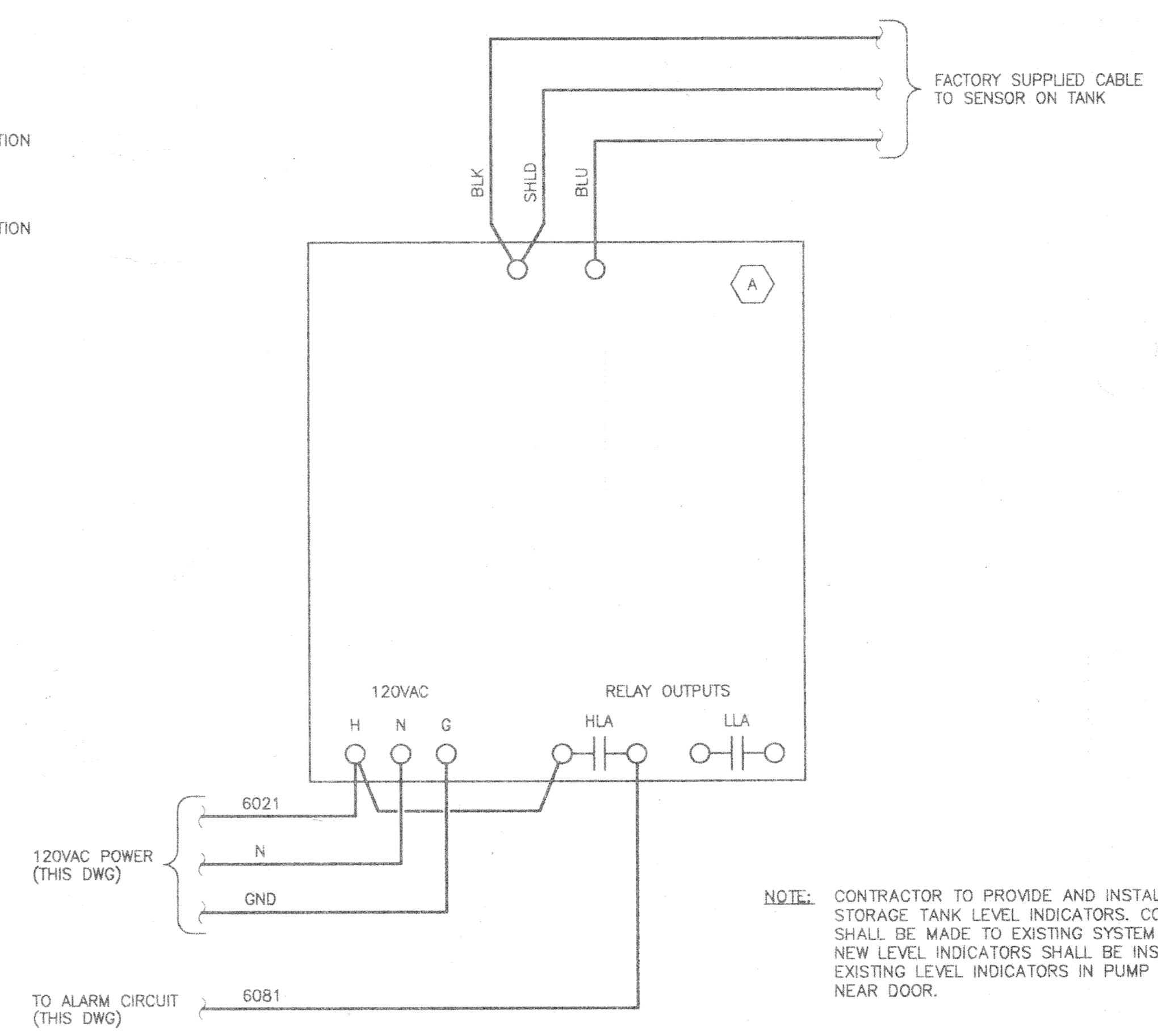
CP	
LI	636 638
CR	461



- FLOW ALARM MIXING PUMP 1
- PRESSURE SWITCH PS-3
- FLOW ALARM MIXING PUMP 2

CP	
LI	643

CP	
LI	645 647
CR	478



- LEGEND
- △ DEVICE LOCATED ON TRUCK LOADING BOOM
- NOTES:
- 1. SEE LEVEL INDICATOR TYPICAL CONNECTION DIAGRAM, THIS DRAWING.

ALARM CONTROL PANEL		
BILL OF MATERIAL		
TAG	QTY	DESCRIPTION
△ 614	2	ULTRASONIC CONTINUOUS LIQUID LEVEL MEASURING SYSTEM, WALL MOUNT TRANSMITTER, 3" CPVC FLANGE MOUNT TRANSDUCER, 120V, 500' OF SENSOR CABLE, NEMA 4X, WITH HEATED ENCLOSURE KAY RAY/SENSALL (FISHER-ROSEMOUNT) LC10201, LS10B, 9648

**SLUDGE STORAGE TANK LEVEL INDICATOR**  
**TYPICAL CONNECTION DIAGRAM**  
 NO SCALE

NOTE: DIMENSIONAL DATA IS NOT TO BE OBTAINED BY SCALING ANY PORTION OF THIS DRAWING.

DESIGNED BY:	RES	4/96
DRAWN BY:	JRF	4/96
CHECKED BY:	CEC	4/96
APPROVED BY:	RJC	4/96
ACTIVITY	INITIALS	DATE

NO.	DATE	REVISION	APP'D.

**CDI** **CLARK DIETZ, INC.**  
 ENGINEERS ARCHITECTS  
 CHAMPAIGN, ILLINOIS CHICAGO, ILLINOIS KENOSHA, WISCONSIN

**EASTSIDE WASTEWATER TREATMENT PLANT**  
 CITY OF JOLIET, ILLINOIS

**SLUDGE STORAGE FACILITY**  
 PHASE II  
 CONTROL DIAGRAMS

PROJECT NUMBER	J02171
DRAWING NUMBER	E-2